


Try Braindump2go Latest Microsoft 70-410 Dumps Questions And 100% Pass Exam Microsoft At The First Try (81-90)

MICROSOFT OFFICIAL: New Updated 70-410 Exam Questions from Braindump2go 70-410 pdf dumps and 70-410 vce dumps! Welcome to download the newest Braindump2go 70-410 vce&pdf dumps: <http://www.braindump2go.com/70-410.html> (471 Q&As) Braindump2go Guarantees Your Microsoft 70-410 Exam 100% Success with Our Unique Official 70-410 Exam Questions Resources! Braindump2go's 70-410 Braindumps are Developed by Experiences IT Certifications Professionals Working in Today's Prospering Companies and Data Centers! Braindump2go 70-410 Exam Dumps are Checked by Our Experts Team every day to ensure you have the Latest Updated Exam Dumps! Exam Code: 70-410Exam Name Installing and Configuring Windows Server 2012Certification Provider: MicrosoftCorresponding Certifications: MCSA, MCSA: Windows Server 2012, MCSE, MCSE: Desktop Infrastructure, MCSE: Private Cloud, MCSE: Server InfrastructureKeywords:70-410 Dumps,70-410 Exam Questions,70-410 VCE,70-410 VCE Free,70-410 PDF,70-410 Lab Manual PDF,70-410 Practice Exams,70-410 Practice Tests,70-410 Installing and Configuring Windows Server 2012

Installing and Configuring Windows Server 2012 R2 Exam: 70-410



Questions and Answers : 471 Q&As
Updated: Sep 03, 2015
~~\$129.99~~ **\$99.99**
[PDF DEMO](#)
[CHECK OUT](#)

Product Description Exam Number/Code: 70-410

Exam Number/Code: 70-410

"Installing and Configuring Windows Server 2012 R2 Exam", also known as 70-410 exam, is a Microsoft Certification. With the complete collection of questions and answers, Braindump2go has assembled to take you through 471 Q&As to your 70-410 Exam preparation. In the 70-410 exam resources, you will cover every field and category in Microsoft MCSA helping to ready you for your successful Microsoft Certification.

Free Demo Download

Braindump2go offers free demo for 70-410 exam (Installing and Configuring Windows Server 2012 R2 Exam). You can check out the interface, question quality and usability of our practice exams before you decide to buy it.

☒ **Printable PDF** ☒ **Premium VCE + VCE Simulator**

QUESTION 81Your network contains an Active Directory domain named contoso.com. All domain controllers run Windows Server 2012 R2. The domain contains a server named Server1 that runs Windows Server 2012 R2.You need to ensure that when users log on to Server1, their user account is added automatically to a local group named Group1 during the log on process.Which Group Policy settings should you modify? A. Restricted GroupsB. Security OptionsC. User Rights AssignmentD. Preferences Answer: DExplanation:A. If a Restricted Groups policy is defined and Group Policy is refreshed, any current member not on the Restricted Groups policy members list is removedB. Security settings incorporated into policies are rules that administrators configure on a computer or multiple computers for the purpose of protecting resources on a computer C. User Rights Assignment policies determines which users or groups have logon rights or privileges on the computerD. With Preferences, local and domain accounts can be added to a local group without affecting the existing members of the group

[http://technet.microsoft.com/en-us/library/cc785631\(v=ws.10\).aspx](http://technet.microsoft.com/en-us/library/cc785631(v=ws.10).aspx)

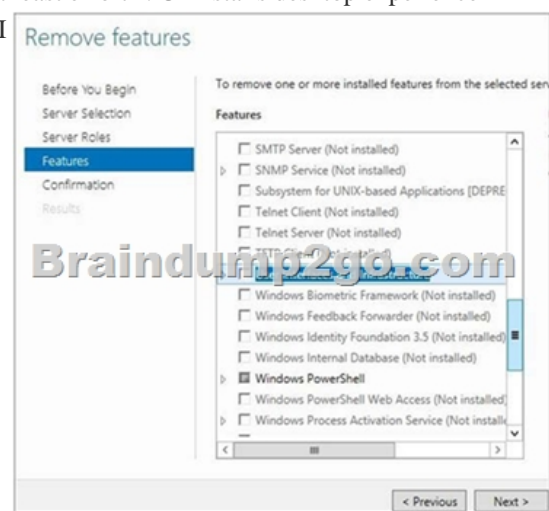
<http://www.grouppolicy.biz/2010/01/how-to-use-group-policy-preferences-to-secure-localadministrator-groups/>

[http://technet.microsoft.com/en-us/library/cc780182\(v=ws.10\).aspx](http://technet.microsoft.com/en-us/library/cc780182(v=ws.10).aspx) <http://technet.microsoft.com/en-us/library/hh831424.aspx>

QUESTION 82Your network contains an Active Directory domain named contoso.com. You need to prevent users from installing a Windows Store app named App1.What should you create? A. An application control policy executable ruleB. An application control policy packaged app ruleC. A software restriction policy certificate ruleD. An application control policy Windows Installer rule Answer: BExplanation:Windows 8 is coming REALLY SOON and of course one of the big new things to computer with that is the newPackaged Apps that run in the start screen. However these apps are very different and do not install liketraditional apps to a path or have a true "executable" file to launch the program. Ofcourse enterprises need a way to control these packaged apps and therefore Microsoft has added a newfeature Packaged Apps option to the AppLocker feature.A. For .exe or .com B. A publisher rule for a Packaged app is based on publisher, name and version C. You can create a certificate rule that identifies software and then allows or does not allow the software torun, depending on the security level.D. For .msi or .mspPackaged apps (also known as Windows 8 apps) are new to Windows Server 2012 R2 and Windows 8. They are based on the new app model that

ensures that all the files within an app package share the same identity. Therefore, it is possible to control the entire Application using a single AppLocker rule as opposed to the nonpackaged apps where each file within the app could have a unique identity. Windows does not support unsigned packaged apps which implies all packaged apps must be signed. AppLocker supports only publisher rules for Packaged apps. A publisher rule for a Packaged app is based on the following information: Publisher of the package, Package name, Package version. Therefore, an AppLocker rule for a Packaged app controls both the installation as well as the running of the app. Otherwise, the publisher rules for Packaged apps are no different than the rest of the rule collections; they support exceptions, can be increased or decreased in scope, and can be assigned to users and groups.

<http://technet.microsoft.com/en-us/library/dd759068.aspx> <http://technet.microsoft.com/en-us/library/hh994588.aspx>
<http://www.grouppolicy.biz/2012/08/how-manage-published-a-k-a-metro-apps-in-windows8-using-grouppolicy/>
http://technet.microsoft.com/en-us/library/hh994597.aspx#BKMK_Cert_Rules Packaged Apps run in the start screen. However these apps are very different and do not install like traditional apps to a path or have a true "executable" file to launch the program. Enterprises need a way to control these packaged apps and therefore Microsoft has added a new feature Packaged Apps option to the AppLocker feature. QUESTION 83 Your company's security policy states that all of the servers deployed to a branch office must not have the graphical user interface (GUI) installed. In a branch office, a support technician installs a server with a GUI installation of Windows Server 2012 on a new server, and then configures the server as a DHCP server. You need to ensure that the new server meets the security policy. You want to achieve this goal by using the minimum amount of Administrative effort. What should you do? A. Reinstall Windows Server 2012 on the server. B. From Windows PowerShell, run Uninstall-WindowsFeature Desktop-Experience. C. From Windows PowerShell, run Uninstall-WindowsFeature PowerShell-ISE. D. From Server Manager, uninstall the User Interfaces and Infrastructure feature. Answer: D Explanation: A. Not least effort B. Uninstalls desktop experience not the full GUI. C. Uninstalls the powershell ISE. D. Least effort and removes full GUI



<http://www.howtogeek.com/111967/how-to-turn-the-gui-off-and-on-in-windows-server-2012/>
<http://technet.microsoft.com/en-us/library/cc772567.aspx>
http://blogs.technet.com/b/server_core/archive/2012/05/09/configuring-the-minimal-serverinterface.aspx QUESTION 84 Your network contains an Active Directory domain named contoso.com. The domain contains 500 servers that run Windows Server 2012 R2. You have a written security policy that states the following: - Only required ports must be open on the servers. - All of the servers must have Windows Firewall enabled. - Client computers used by Administrators must be allowed to access all of the ports on all of the servers. - Client computers used by the Administrators must be authenticated before the client computers can access the servers. You have a client computer named Computer1 that runs Windows 8. You need to ensure that you can use Computer1 to access all of the ports on all of the servers successfully. The solution must adhere to the security policy. Which three actions should you perform? (Each correct answer presents part of the solution. Choose three.) A. On Computer1, create a connection security rule. B. On all of the servers, create an outbound rule and select the Allow the connection if it is secure option. C. On all of the servers, create an inbound rule and select the Allow the connection if it is secure option. D. On Computer1, create an inbound rule and select the Allow the connection if it is secure option. E. On Computer1, create an outbound rule and select the Allow the connection if it is secure option. F. On all of the servers, create a connection security rule. Answer: ACF Explanation: <http://technet.microsoft.com/en-us/library/cc772017.aspx> Unlike firewall rules, which operate unilaterally, connection security rules require that both communicating computers have a policy with connection security rules or another compatible IPsec policy.

<http://technet.microsoft.com/en-us/library/cc753463.aspx> Traffic that matches a firewall rule that uses the Allow connection if it is secure setting bypasses Windows Firewall. The rule can filter the traffic by IP address, port, or protocol. This method is supported on Windows Vista or Windows Server 2008. QUESTION 85 Drag and Drop Question Your network contains three servers. The servers are configured as shown in the following table.

Server name	CPU type	Operating system	Installation type
Server1	x86	32-bit Windows Server 2008 Service Pack 2 (SP2)	Full
Server2	x86	32-bit Windows Server 2008 Service Pack 2 (SP2)	Server Core
Server3	x64	64-bit Windows Server 2008 R2	Full

Your company plans to standardize all of the servers on Windows Server 2012 R2. You need to recommend an upgrade path for each server. The solution must meet the following requirements: - Upgrade the existing operating system whenever possible.- Minimize hardware purchases. Which upgrade path should you recommend for each server? To answer, drag the appropriate upgrade path to each server in the answer area. Each upgrade path may be used once, more than once, or not at all.

Click here to enter text.

Answer Area

Clean installation on existing hardware

Clean installation on new hardware

Upgrade on existing hardware

Answer:

Click here to enter text.

Answer Area

Clean installation on existing hardware

Clean installation on new hardware

Upgrade on existing hardware

Explanation: Server1 not 64-bit processor Server2 not 64-bit processor Server3 64-bit processor, needs 2008 SP1

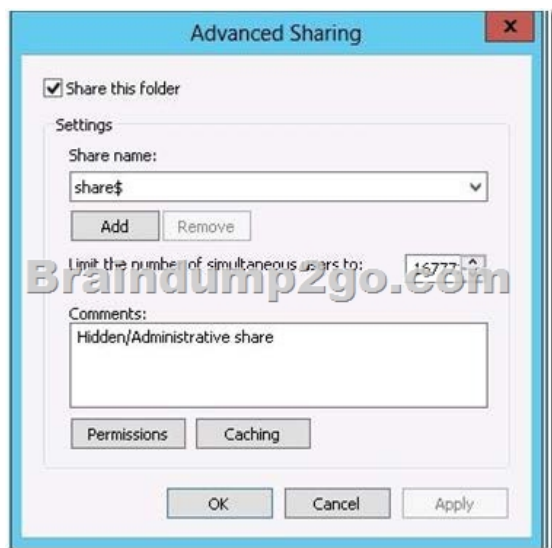
Upgrade Path Considerations:

There are upgrade paths to Windows Server 2012 from both Windows Server 2008 and Windows Server 2008 R2. The following table summarizes the available upgrade paths.

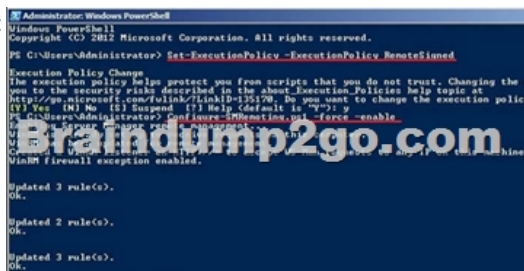
Upgrade Options	Windows Server 2012
Windows 2008 Standard/Enterprise with SP2 (x64)	Yes
Windows 2008 Datacenter with SP2 (x64)	No
Windows 2008 R2 Standard or Enterprise with SP1	Yes
Windows 2008 R2 Datacenter with SP1	No
Windows Web Server 2008 R2	Yes

The same old rules still apply. In-place upgrades from 32-bit editions of Windows Server 2008 to 64-bit editions of Windows Server 2012 are not supported. Upgrades from 32-bit editions of Windows Server 2008 to 64-bit editions of Windows Server 2012 require a clean installation of Windows Server 2012. Upgrades from any pre-RTM builds of Windows Server 2012 (like the beta versions) to Windows Server 2012 RTM are not supported. On the role you are running, an upgrade would be blocked from Clustering as an added role in Windows 2008 R2 will block an upgrade.

<http://blogs.technet.com/b/askcore/archive/2012/10/23/upgrading-to-windows-server-2012-part-1.aspx>
<http://technet.microsoft.com/en-us/library/jj134246.aspx> QUESTION 86 Your network contains a file server named Server1 that runs Windows Server 2012 R2. All client computers run Windows 8. Server1 contains a folder named Folder1. Folder1 contains the installation files for the company's desktop applications. A network technician shares Folder1 as Share1. You need to ensure that the share for Folder1 is not visible when users browse the network. What should you do? A. From the properties of Folder1, deny the List Folder Contents permission for the Everyone group. B. From the properties of Folder1, remove Share1, and then share Folder1 as Share1\$. C. From the properties of Folder1, configure the hidden attribute. D. From the properties of Share1, configure access-based enumeration. Answer: B Explanation: A. Will deny everyone list of folder content B. Remove share and re-add using \$ for Hidden/Administrative share C. This will hide the physical folder D. lists only the files and folders to which they have access when browsing content on the file server A hidden share is identified by a dollar sign (\$) at the end of the share name Hidden shares are not listed when you look through the shares on a computer or use the "net view" command Why Use Hidden Shares? Using hidden shares on your network is useful if you do not want a shared folder or drive on the network to be easily accessible. Hidden shares can add another layer of protection for shared files against unauthorized people connecting to your network. Using hidden shares helps eliminate the chance for people to guess your password (or be logged into an authorized Windows account) and then receive access to the shared resource.

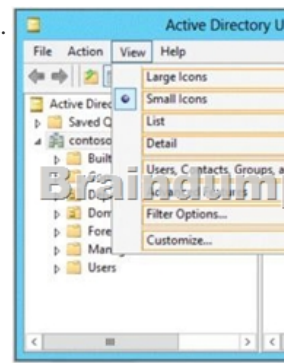


<http://support.microsoft.com/kb/314984>[http://technet.microsoft.com/en-us/library/cc784710\(v=ws.10\).aspx](http://technet.microsoft.com/en-us/library/cc784710(v=ws.10).aspx) QUESTION 87 Your network contains an Active Directory domain named contoso.com. The domain contains a server named Server1 that runs Windows Server 2012 R2 and a server named Server2 that runs Windows Server 2008 R2 Service Pack 1 (SP1). Both servers are member servers. On Server2, you install all of the software required to ensure that Server2 can be managed remotely from Server Manager. You need to ensure that you can manage Server2 from Server1 by using Server Manager. Which two tasks should you perform on Server2? (Each correct answer presents part of the solution. Choose two.) A. Run the systempropertiesremote.exe command B. Run the Enable-PsRemoting cmdlet C. Run the Enable-PsSessionConfiguration cmdlet D. Run the Configure-SMRemoting.ps1 script E. Run the Set-ExecutionPolicy cmdlet. Answer: DE Explanation: To configure Server Manager remote management by using Windows PowerShell On the computer that you want to manage remotely, open a Windows PowerShell session with elevated user rights. To do this, click Start, click All Programs, click Accessories, click Windows PowerShell, right-click the Windows PowerShell shortcut, and then click Run as administrator. In the Windows PowerShell session, type the following, and then press Enter. Set-ExecutionPolicy -ExecutionPolicy RemoteSigned Type the following, and then press Enter to enable all required firewall rule exceptions. Configure-SMRemoting.ps1 -force -enable <http://technet.microsoft.com/en-us/library/dd759202.aspx> A) Run the systempropertiesremote.exe command B) Enable-PSRemoting cmdlet configures the computer to receive Windows PowerShell remote commands that are sent by using the WS-Management technology. C) Enable-PSSessionConfiguration cmdlet enables registered session configurations that have been disabled. D) Configure-SMRemoting.ps1 -force -enable E) Set-ExecutionPolicy -ExecutionPolicy RemoteSigned To configure Server Manager remote management by using Windows PowerShell On the computer that you want to manage remotely, open a Windows PowerShell session with elevated user rights, type the following:

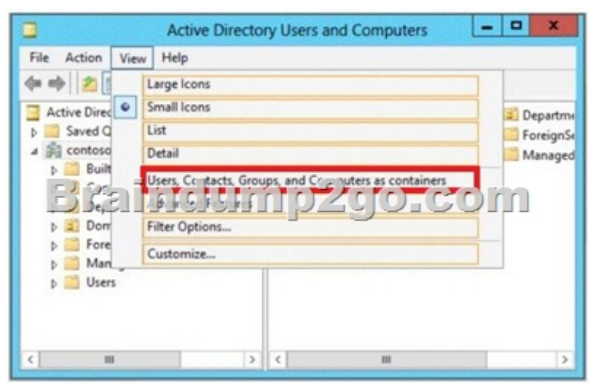


To configure Server Manager remote management by using Windows PowerShell. On the computer that you want to manage remotely, open a Windows PowerShell session with elevated user rights. To do this, click Start, click All Programs, click Accessories, click Windows PowerShell, right-click the Windows PowerShell shortcut, and then click Run as administrator. In the Windows PowerShell session, type the following, and then press Enter. Set-ExecutionPolicy - ExecutionPolicy RemoteSigned Type the following, and then press Enter to enable all required firewall rule exceptions. Configure-SMRemoting.ps1 -force -enable <http://technet.microsoft.com/en-us/library/dd759202.aspx> QUESTION 88 Hotspot Question Your network contains an Active Directory domain named contoso.com. The domain contains a print server named Server1 that runs Windows Server 2012 R2. You share several printers on Server1. You need to ensure that you can view the printer objects associated to Server1 in Active Directory

Users and Computers. Which option should you select? To answer, select the appropriate option in the answer area.

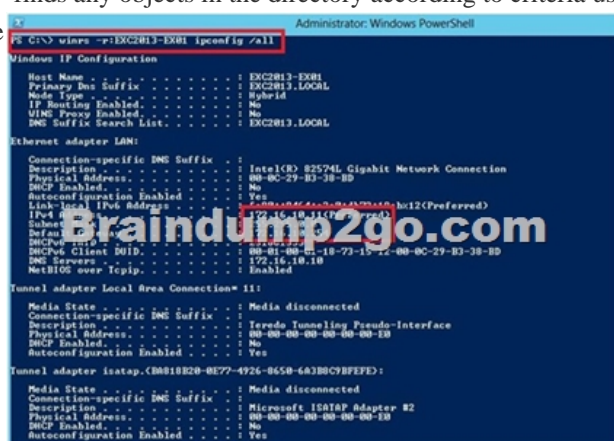


Answer:



Explanation: You can view printer objects in Active Directory by clicking Users, Groups, and Computers as containers from the View menu in the Active Directory Users and Computers snap-in. By default, printer objects are created under the machine object in which they are shared. After you turn on the Users, Groups, and Computers as containers option, you can see printers by expanding the printer's host computer. <http://support.microsoft.com/kb/235925> QUESTION 89 Your network contains an Active Directory domain named contoso.com. The domain contains two member servers named Server1 and Server2 that run Windows Server 2012 R2. You log on to Server1. You need to retrieve the IP configurations of Server2. Which command should you run from Server1? A.

winrs -r:server2 ipconfig B. winrm get server2 C. dsquery *-scope base-attr ip, server2 D. ipconfig > server2.ip Answer: A Explanation: A. Windows Remote Management allows you to manage and execute programs remotely B. winrm is the server side services for remote mgmt C. dsquery * finds any objects in the directory according to criteria using a LDAP query. D. Would output server1 ipconfig info to server2.ip file




[http://technet.microsoft.com/en-us/library/dd349801\(v=ws.10\).aspx](http://technet.microsoft.com/en-us/library/dd349801(v=ws.10).aspx) QUESTION 90 You work as an administrator at L2P.com. The L2P.com network consists of a single domain named L2P.com. All servers on the L2P.com network have Windows Server 2008 R2 installed. Some of L2P.com's workstations have Windows 7 installed, while the rest have Windows 8 installed. After installing a new Windows Server 2012 computer in the L2P.com domain, you configure it to run the File and Storage Services server role. You are instructed to create a shared folder on the new server, and configure the use of Previous Versions for restoring files located in the shared folder. Which of the following actions should you take? A. You should consider configuring the Shadow Copies settings on

the new server.B. You should consider configuring the Snapshot settings on the new server.C. You should consider configuring the Background Copy settings on the new server.D. You should consider configuring the Permission settings on the new server.
Answer: AExplanation:What are previous versions?Previous versions are either backup copies (copies of files and folders that you back up by using the Back Up Files wizard, or shadow copies) copies of files and folders that Windows automatically saves as part of a restore point. (Shadow copies can be copies of files on your computer or shared files on a computer on a network.) You can use previous versions of files to restore files that you accidentally modified or deleted, or that were damaged. Depending on the type of file or folder, you can open, save to a different location, or restore a previous version.ATT: (nothing to do with question but cool to know) File Server Volume Copy Shadow Service (VSS) Agent Service Enables consistency of application snapshots (shadow copies). With previous versions of Windows Server, VSS only supported shadow copies of data on the local server. With WS2012, Microsoft has added VSS for SMB File Shares which extends shadow copy support for network volumes.Administrators install the FS VSS Agent on the file server where the application data is located. They then install the VSS provider in the server where the application is located. The provider talks to the agent using the new File Server Remote VSS protocol in order to manage the shadow copies of the data.<http://windows.microsoft.com/en-gb/windows-vista/previous-versions-of-files-frequently-asked-questions>

Thanks For Trying Braindump2go Latest Microsoft 70-410 Dumps Questions! Braindump2go Exam Dumps ADVANTAGES:?
100% Pass Guaranteed Or Full Money Back!? Instant Download Access After Payment!? One Year Free Updation!? Well Formated: PDF,VCE,Exam Software!? Multi-Platform capabilities ? Windows, Laptop, Mac, Android, iPhone, iPod, iPad.? Professional, Quick,Patient IT Expert Team 24/7/3471 Onlinen Help You!? We served more than 35,000 customers all around the world in last 5 years with 98.99% PASS RATE!? Guaranteed Secure Shopping! Your Transcations are protected by Braindump2go all the time!? Pass any exams at the FIRST try!

Installing and Configuring Windows Server 2012 R2 Exam: 70-410



Product Description Exam Number/Code: 70-410

Exam Number/Code: 70-410

"Installing and Configuring Windows Server 2012 R2 Exam", also known as 70-410 exam, is a Microsoft Certification. With the complete collection of questions and answers, Braindump2go has assembled to take you through 471 Q&As to your 70-410 Exam preparation. In the 70-410 exam resources, you will cover every field and category in Microsoft MCSA helping to ready you for your successful Microsoft Certification.

Free Demo Download

Braindump2go offers free demo for 70-410 exam (Installing and Configuring Windows Server 2012 R2 Exam). You can check out the interface, question quality and usability of our practice exams before you decide to buy it.

☒ Printable PDF ☒ Premium VCE + VCE Simulator

Questions and Answers : 471
Q&As

Updated: Sep 03, 2015

~~\$129.99~~ **\$99.99**

[PDF DEMO](#)

[CHECK OUT](#)

70-410 PDF Dumps & 70-410 VCE Dumps Full Version Download(471q): <http://www.braindump2go.com/70-410.html>