


[PDF&VCEBraindump2go 70-336 Practice Exams Free Version (51-60)

MICROSOFT NEWS: 70-336 Exam Questions has been Updated Today! Get Latest 70-336 VCE and 70-336 PDF Instantly! Welcome to Download the Newest Braindump2go 70-336 VCE&70-336 PDF Dumps:

<http://www.braindump2go.com/70-336.html> (110 Q&As) 70-336 Exam Dumps Free Shared By Braindump2go For Instant Download Now! Download Latest 70-336 Exam Questions and pass 70-336 one time easily! Do you want to be a winner? Exam Code: 70-336 Exam Name: Core Solutions of Microsoft Lync Server 2013 Certification Provider: Microsoft Corresponding Certifications: MCSE, MCSE: Communication [70-336 Dump](#), [70-336 PDF](#), [70-336 VCE](#), [70-336 Study Guide](#), [70-336 Book](#), [70-336 Exam Questions](#), [70-336 eBook](#), [70-336 Exam Guide](#), [70-336 Exam Prep](#), [70-336 Braindump](#), [70-336 Practice Test](#), [70-336 Practice Exam](#)

Microsoft Core Solutions of Microsoft Lync Server 2013: 70-336



Product Description Exam Number/Code: 70-336

Exam Number/Code: 70-336

"Microsoft Core Solutions of Microsoft Lync Server 2013", also known as 70-336 exam, is a Microsoft Certification. With the complete collection of questions and answers, Braindump2go has assembled to take you through 110 Q&As to your 70-336 Exam preparation. In the 70-336 exam resources, you will cover every field and category in Microsoft MCITP helping to ready you for your successful Microsoft Certification.

Free Demo Download

Braindump2go offers free demo for 70-336 exam (Microsoft Core Solutions of Microsoft Lync Server 2013). You can check out the interface, question quality and usability of our practice exams before you decide to buy it.

Questions and Answers : 110 Q&As
 Updated: Dec 12, 2015
 \$420.00 **\$99.99**

[PDF DEMO](#)

[CHECK OUT](#)

Printable PDF Premium VCE + VCE Simulator

QUESTION 51 Drag and Drop Question You are troubleshooting the issue reported by the Toronto users. You verify that the logging level of the centralized logging service is set to AlwaysOn. You need to gather additional troubleshooting information immediately to resolve the issue. Which five actions should you perform? To answer, move the five appropriate actions from the list of actions to the answer area and arrange them in the correct order.

Actions	Answer Area
Sign in to Lync 2013 from a client computer in the Toronto office.	
Run the <code>cscontroller.exe -search</code> command.	
Run the <code>cscontroller.exe -flush</code> command.	
Run the <code>cscontroller.exe -stop</code> command.	

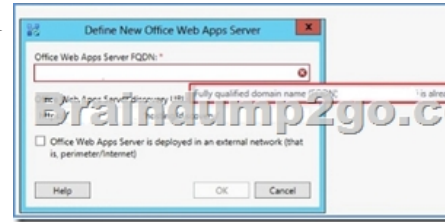
Answer:

Actions	Answer Area
Run the <code>cscontroller.exe -start</code> command.	Run the <code>cscontroller.exe -start</code> command.
Sign in to Lync 2013 from a client computer in the Toronto office.	Sign in to Lync 2013 from a client computer in the Toronto office.
Run the <code>cscontroller.exe -flush</code> command.	Run the <code>cscontroller.exe -flush</code> command.
Run the <code>cscontroller.exe -search</code> command.	Run the <code>cscontroller.exe -search</code> command.

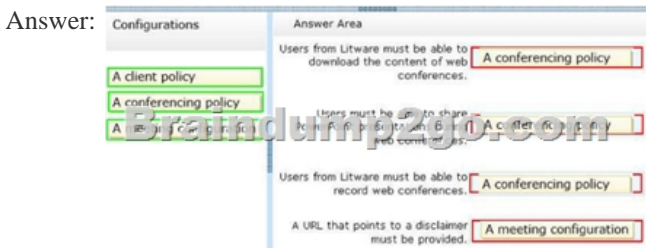
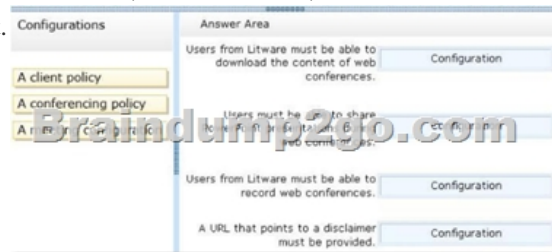
QUESTION 52 Contoso is evaluating the implementation of push notifications for mobile devices. You need to identify which tasks must be performed to enable the push notifications. Which three cmdlets should you identify? (Each correct answer presents part of the solution. Choose three.) A. New-CsAllowedDomain B. Set-CsPublicProvider C. New-CsHostingProvider D. Set-CsPushNotificationConfiguration E. Enable-CsPublicProvider Answer: ACDE Explanation:

<http://technet.microsoft.com/en-us/library/hh690047.aspx> QUESTION 53 You need to identify on which server you can install the

Microsoft Office Web Apps server component. Which server should you identify? A. Lync1.contoso.comB. Server1.contoso.comC. Exchange1.contoso.comD. SQL1.contoso.com Answer: B Explanation: It is unclear what roles are on Server1, but you cannot collocate the web apps server on any server that has been defined in the topology. I have illustrated below trying to add web apps server using the same FQDN as my Standard Edition Pool. Server1 appears to be the only the correct answer, because in the case study Server1 is a member server with nothing installed on it. Answer is Server1



QUESTION 54 Drag and Drop Question You need to identify which configurations must be used to meet the web conferencing requirements. Which configuration should you identify for each requirement? To answer, drag the appropriate configuration to the correct requirement in the answer area. Each configuration may be used once, more than once, or not at all. Additionally, you may need to drag the split bar between panes or scroll to view content.



Case Study: 2 - Margie's Travel (QUESTION 55 - QUESTION 63) Overview General Overview Margie's Travel is an executive travel company that has 7,000 employees. The company has a sales department and a research department. Physical Locations The company has a main office and two branch offices. The main office is located in Montreal. The branch offices are located in New York and Seattle. The number of users in each office is shown in the following table.

Office location	Number of users
Montreal	5,500
New York	800
Seattle	700

All offices connect to each other by using a WAN link. Existing Environment Active Directory Environment The network contains one Active Directory forest named margiestravel.com. Each office is configured as an Active Directory site. Lync Server Environment The company has a Lync Server 2010 infrastructure in the Montreal office. The network contains four servers. The servers are configured as shown in the following table.

Server name	Role	Software
Lync1	Front End Server in a pool named Pool1	Lync Server 2010
Edge1	Edge Server (node in a cluster named Cluster1)	Lync Server 2010 Service Pack 2 (SP2)
SQL2	Back End Server (cluster node in a cluster named Cluster2)	Microsoft SQL Server 2008 Service Pack 2 (SP2)

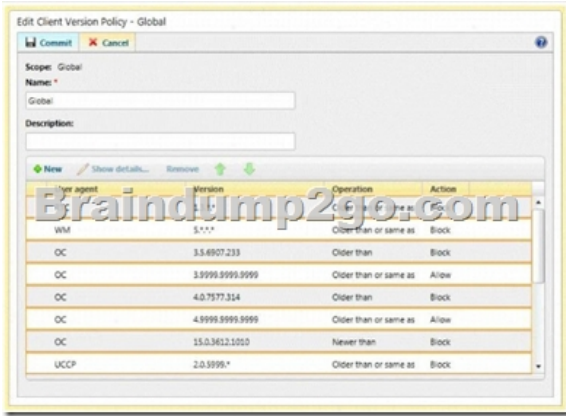
Lync Server 2013 Standard Edition is deployed in the Montreal office as a pilot on a separate network segment. You create several

test users on the Lync Server 2013 pilot. User Issue An administrator modifies the global client version policy of the Lync Server 2013 pilot deployment. After the modification, Lync Server 2013 users report that they fail to sign in to Microsoft Lync 2010 and they receive the following error message. Requirements Planned Changes After a successful pilot program, the company plans to deploy Lync Server 2013 on the production network for all users. The Lync Server 2013 deployment will include the following roles:- Edge Server- Front End Server- Mediation Server- Monitoring Server- Office Web Apps Server Lync Server 2013 and Lync Server 2010 will coexist for six months. Monitoring Requirements A monitoring solution must save call quality data for 180 days. Backup Requirements An administrator plans to perform a weekly manual backup of the Lync Server databases. The backup files will be copied to an offsite location. Conferencing Requirements The company plans to implement a conferencing solution to meet the following requirements:- The company's executives must be able to create conferences that contain up to 250 participants.- The company's managers must be able to create conferences that contain up to 50 participants.- All other users must be prevented from creating conferences that contain more than 15 users. QUESTION 55 You are evaluating the implementation of SQL Server database mirroring on new SQL Server servers for the planned Lync Server 2013 deployment. You need to recommend which tasks must be performed to prepare SQL Server database mirroring for Lync Server 2013. Which two actions should you recommend? (Each correct answer presents part of the solution. Choose two.) A. Run the Update-CsUserDatabase cmdlet. B. Run the Invoke-CsDatabaseFailover cmdlet. C. On the Front End Servers, install Failover Clustering. D. From the Topology Builder, create a new Enterprise Edition Front End pool and a new SQL Server database, SQL Server database mirroring, and a witness. E. On the SQL Server servers, install Failover Clustering. F. From the Topology Builder, publish the topology and install the databases. Answer: AB QUESTION 56 Drag and Drop Question You need to design the deployment of the planned Edge Server. Which four actions should you include in the design? To answer, move the four appropriate actions from the list of actions the correct order.

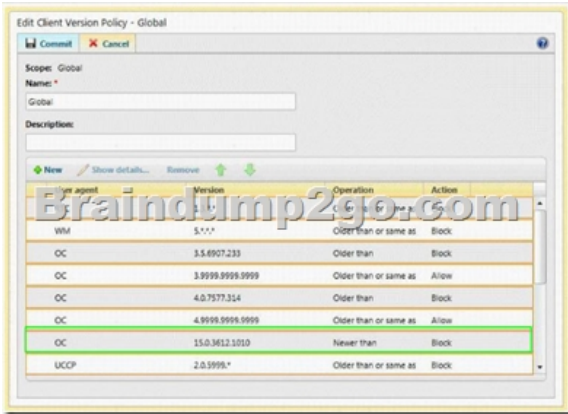
Answer:

QUESTION 57 You need to configure the conferencing settings to support the conferencing requirements and the business requirements. What should you do? A. Modify the global conferencing policy. Create a site-level conferencing policy for the managers and a site-level conferencing policy for the executives. B. Create a per-user conferencing policy for all users, a per-user conferencing policy for the managers, and a per-user conferencing policy for the executives. C. Modify the global conferencing policy. Create a per-user conferencing policy for the managers and a per-user conferencing policy for the executives. D. Create a site-level conferencing policy for all users, a site-level conferencing policy for the managers, and a per-user conferencing policy for

the executives. Answer: C QUESTION 58The company is planning to implement help and support resources for users that use the Lync Server 2013 conferencing features. You need to ensure that the users can access the help and support resources by clicking a URL from a meeting invitation. What should you do? A. Run the Set-CsConferenceDisclaimer cmdlet.B. From the Microsoft Lync Server 2013 Control Panel, modify the conferencing policy settings.C. Run the Set-CsMeetingRoom cmdlet.D. From the Microsoft Lync Server 2013 Control Panel, modify the meeting configuration settings. Answer: D QUESTION 59Hotspot Question You need to resolve the user issue. Which rule should you modify in the client version policy? To answer, select the appropriate rule in the answer area.




Answer:



QUESTION 60You are evaluating the implementation of the planned monitoring solution. You need to recommend which tasks must be performed to meet the monitoring requirements. Which cmdlet should you include in the recommendation? A. Set-CsArchivingConfigurationB. Set-CsQoEConfigurationC. Set-CsCDRConfigurationD. Set-CsHealthMonitoringConfiguration Answer: CExplanation: <http://technet.microsoft.com/en-us/library/gg398774.aspx> All Braindump2go 70-336 Exam Dumps are Promised One Year Free Updation -- We will inform you when your products have new questions and Answers updation! Download Microsoft 70-336 Practice Tests Questions Full Version Now - Pass 70-336 100% One Time!

Microsoft Core Solutions of Microsoft Lync Server 2013: 70-336



Product Description Exam Number/Code: 70-336

Exam Number/Code: 70-336

"Microsoft Core Solutions of Microsoft Lync Server 2013", also known as 70-336 exam, is a Microsoft Certification. With the complete collection of questions and answers, Braindump2go has assembled to take you through 110 Q&As to your 70-336 Exam preparation. In the 70-336 exam resources, you will cover every field and category in Microsoft MCITP helping to ready you for your successful Microsoft Certification.

Questions and Answers : 110 Q&As
 Updated: Dec 12, 2015
~~\$420.00~~ **\$99.99**

[PDF DEMO](#)

[CHECK OUT](#)

Free Demo Download

Braindump2go offers free demo for 70-336 exam (Microsoft Core Solutions of Microsoft Lync Server 2013). You can check out the interface, question quality and usability of our practice exams before you decide to buy it.

Printable PDF **Premium VCE + VCE Simulator**

FREE DOWNLOAD: NEW UPDATED 70-336 PDF Dumps & 70-336 VCE Dumps from Braindump2go:
<http://www.braindump2go.com/70-336.html> (110 Q&As)