

[OFFICIAL] Braindump2go 70-497 Exam Questions Download (21-30)

MICROSOFT NEWS: 70-497 Exam Questions has been Updated Today! Get Latest 70-497 VCE and 70-497 PDF Instantly! Welcome to Download the Newest Braindump2go 70-497 VCE&70-497 PDF Dumps: <http://www.braindump2go.com/70-497.html> (106 Q&As) 100% Pass 70-497 Real Test is not a dream! Braindump2go Latest Released 70-497 Exam Practice Exam Dumps will help you pass 70-497 Exam one time easiluy! Free Sample Exam Questions and Answers are offered for free download now! Quickly having a try today! Never loose this valuable chance! Exam Code: 70-497Exam Name: Software Testing with Visual Studio 2012Certification Provider: MicrosoftCorresponding Certifications: MCSD, MCSD: Application Lifecycle Management70-497 Dumps,70-497 Exam Questions,70-497 VCE,70-497 PDF,70-497 Book,70-497 Study Material,70-497 Free Dumps,70-497 Dumps PDF,70-497 Certification,70-497 Software Testing with Visual Studio 2012,70-497 Exam Dumps,70-497 Exam Prep,70-497 Braindump,70-497 Practice Test,70-497 Practice Exam

Microsoft Software Testing with Visual Studio 2012: 70-497



Product Description Exam Number/Code: 70-497

Exam Number/Code: 70-497

"Microsoft Software Testing with Visual Studio 2012", also known as 70-497 exam, is a Microsoft Certification. With the complete collection of questions and answers, Braindump2go has assembled to take you through 106 Q&As to your 70-497 Exam preparation. In the 70-497 exam resources, you will cover every field and category in Microsoft MCTS helping to ready you for your successful Microsoft Certification.

Questions and Answers : 106 Q&As

Updated: Nov 2, 2015

~~\$429.00~~ **\$99.99**

[PDF DEMO](#)

[CHECK OUT](#)

Printable PDF **Premium VCE + VCE Simulator**

Free Demo Download

Braindump2go offers free demo for 70-497 exam (Microsoft Software Testing with Visual Studio 2012). You can check out the interface, question quality and usability of our practice exams before you decide to buy it.

QUESTION 21 You are using Microsoft Test Manager (MTM). You are using the Microsoft Solution Framework (MSF) for Agile Software Development process template. SharePoint integration and reporting are enabled. You want to assess your team's testing effort. To do this, you need to: - Identify how much testing has the team completed, - Determine whether the team is likely to finish the testing on time, - Identify how many tests have passed, failed, or blocked, and - Identify how many tests are left to be run. What should you do? A. From the team portal, open the Test Activity Excel Report. B. From the team portal, open the Test Plan Progress Report. C. From the team portal, open the Test Case Readiness Excel Report. D. Open the Test Results view in MTM.

Answer: B Explanation: After the team creates test plans and starts to run tests by using Microsoft Test Manager, you can use the Test Plan Progress report to track the team's progress in testing the product. You can use this report to answer the following questions: How much testing has the team completed? Is the team likely to finish the testing on time? How many tests are left to be run? How many tests are passing? How many tests are failing? How many tests are blocked? Reference: Test Plan Progress Report

QUESTION 22 Drag and Drop Question You are using Microsoft Test Manager (MTM) to perform exploratory testing. You need to test a Windows Store application. You need to configure the connection to the remote device running the Windows Store application. What should you do? (To answer, move the three appropriate actions from the list of actions to the answer area and arrange them in the correct order.)

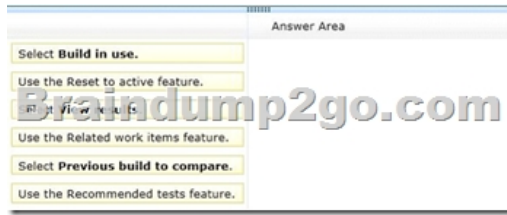
	Answer Area
Use the Modify link to configure the device.	
From the exploratory test window, use the Connect to link.	
From the Plan Activity, edit the test plan Properties.	
From the Test Center Group, use the Do Exploratory Testing menu item.	
Enter the URL of the Windows Store application.	

Answer:

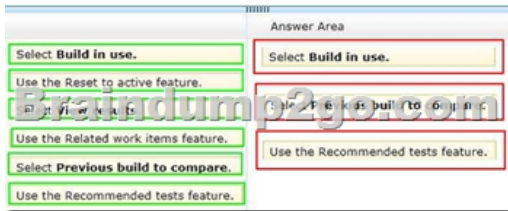
	Answer Area
Use the Modify link to configure the device.	
From the exploratory test window, use the Connect to link.	
From the Plan Activity, edit the test plan Properties.	
From the Test Center Group, use the Do Exploratory Testing menu item.	
Enter the URL of the Windows Store application.	
	From the Test Center Group, use the Do Exploratory Testing menu item.
	Enter the device name and port and select Save .

QUESTION 23 Drag and Drop Question You are using Microsoft Test Manager (MTM) to manage your testing efforts. You plan to

identify which tests are impacted by changes to the code. You need to view a list of recommended tests from the Recommended tests view. What should you do? (To answer, move the three appropriate actions from the list of actions to the answer area and arrange them in the correct order.)

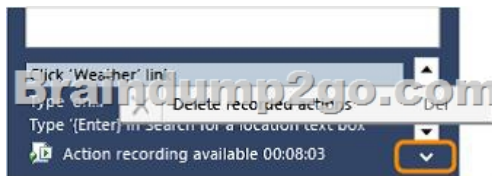


Answer:

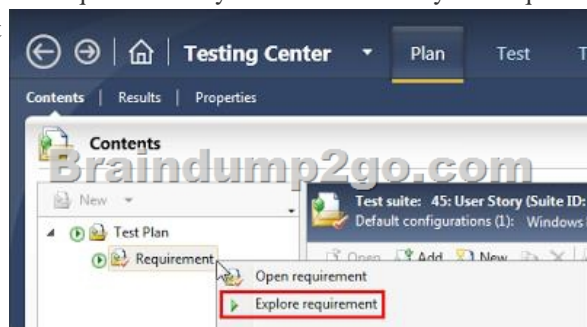


QUESTION 24 You are using Microsoft Test Manager (MTM) to review the work items assigned to two of your team members. You need to run a query from the Queries activity and compare the results to a second query without going to a second workstation. What should you do? A. Click the New query option to open a second Queries activity. B. Click the Queries view to open a second Queries view, and compare the results of the two queries. C. Click New and create a new task from the drop-down menu. D. Launch another instance of MTM and execute a second query. Answer: B Explanation: Reference: Multiple Queries Open in MTM

QUESTION 25 You are using Microsoft Test Manager (MTM) for manual test runs. You are creating an action recording but some of the recorded actions were not part of the intended steps. You need to remove only the unwanted actions from the current action recording. What should you do? A. Open the test results and save the action log. Edit the action log to remove the unwanted actions. Import the file as an attachment, overwriting the initial action log. B. Reset the test case inside the test runner and create a new action log. C. Delete the unwanted actions from the captured actions inside the test runner. D. Open the test results and edit the action log to remove the unwanted actions. Answer: C Explanation: Open the editing panel at the bottom of test runner. You can delete actions there:



QUESTION 26 You are using Microsoft Test Manager (MTM) to perform exploratory testing. You need to ensure that any bugs or test cases created during an exploratory test session are associated with a specific requirement for the purposes of traceability. What should you do? A. From the Test activity, select View Exploratory Test Sessions. Open a session and click the Copy Link button. B. From the Run Tests activity, select a test case that is a part of a requirement suite and select Run. C. Create a requirement suite in the test plan, right-click on the suite, and select Explore Requirement. D. From the Do Exploratory Testing activity, select Explore. Answer: C Explanation: Add a Requirement to your Test Plan Once your Requirement is in your Test Plan, right mouse click and select Explore requirement

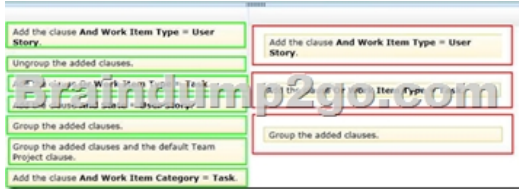


Reference: Exploratory Testing-What's new for Microsoft Test Manager 2012 RTM QUESTION 27 Drag and Drop Question You are using Microsoft Test Manager to view user stories and tasks in a new team project. You are building a new query that must return

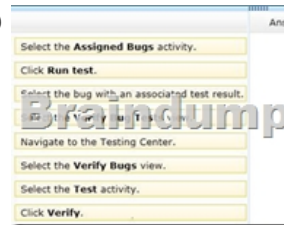
both work item types in a single result set. The default clause Team Project = @Project is already specified. You need to complete the query. What should you do? (To answer, move the three appropriate actions from the list of actions to the answer area and arrange them in the correct order.)



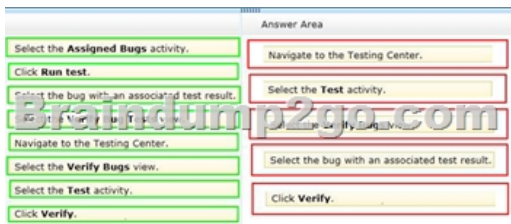
Answer:



QUESTION 28 Drag and Drop Question You are using Microsoft Test Manager (MTM) to track bugs that have been found during testing. You need to verify a bug by re-running the test case associated with the bug. Which actions should you perform? (To answer, move the five appropriate actions from the list of actions to the answer area and arrange them in the correct order.)



Answer:



QUESTION 29 While reviewing a bug in Microsoft Test Manager (MTM), you realize there is no test case covering the bug. You need to create a test case from the bug, including test steps, and associate it with the test case for future reference. What should you do? A. In MTM, in the Verify Bugs activity, select the bug. Click Open test case. B. Open a Visual Studio 2012 window. Select the bug and click Open test case. C. In MTM, in the Verify Bugs activity, select the bug. Click Create test case from bug. D. Open a Visual Studio 2012 window. Create a test case and associate it with the bug. Answer: C Explanation: Reference: How to: Use Recorded Actions in Bugs to Create Test Cases

QUESTION 30 Drag and Drop Question You are a test developer using Microsoft Test Manager (MTM). You are editing a test plan for a product. You need to supply a new custom configuration variable in the configuration setting for one of the test cases. In which order should you perform the actions in MTM? To answer, move all actions from the list of actions to the answer area and arrange them in the correct order.




Answer:



Braindump2go New Released 70-497 Dumps PDF are Now For Free Download, 106 Latest Questions, Download It Right Now and Pass Your Exam 100%:

Microsoft Software Testing with Visual Studio 2012: 70-497



Product Description Exam Number/Code: 70-497

Exam Number/Code: 70-497

"Microsoft Software Testing with Visual Studio 2012", also known as 70-497 exam, is a Microsoft Certification. With the complete collection of questions and answers, Braindump2go has assembled to take you through 106 Q&As to your 70-497 Exam preparation. In the 70-497 exam resources, you will cover every field and category in Microsoft MCTS helping to ready you for your successful Microsoft Certification.

Questions and Answers : 106 Q&As
Updated: Nov 2, 2015

~~\$129.99~~ **\$99.99**

[PDF DEMO](#)

[CHECK OUT](#)

Printable PDF **Premium VCE + VCE Simulator**

FREE DOWNLOAD: NEW UPDATED 70-497 PDF Dumps & 70-497 VCE Dumps from Braindump2go:
<http://www.braindump2go.com/70-497.html> (106 Q&A)