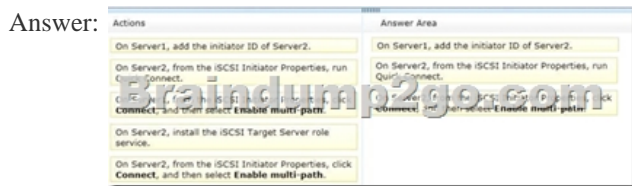
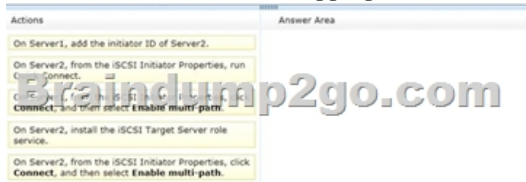


[Oct.-2016-New100% Real Exam Questions-Microsoft 70-414 PDF VCE Dumps 252Q&As Download[NQ47-NQ52

2016.Oct New Microsoft 70-414: Implementing an Advanced Server Infrastructure Exam Questions Updated!Free Instant Download 70-414 Exam Dumps (PDF & VCE) 252Q&As from Braindump2go.com Today! 100% Real Exam Questions! 100% Exam Pass Guaranteed! 1. | 2016.10 Latest 70-414 Exam Dumps (PDF & VCE) 252Q&As Download: <http://www.braindump2go.com/70-414.html> 2. | 2016.10 Latest 70-414 Exam Questions & Answers: <https://drive.google.com/folderview?id=0B75b5xYLjSSNfjFDZEI5S3IVWkV0YXR5RGw2VII0VndGN3VodlRxBZ1NTempJdTQ1e mZmTWM&usp=sharing> QUESTION 47Your company has a main office and a branch office. You plan to implement a failover cluster named Cluster1 to host an application named Appl. The data of App1 will replicate to all of the nodes in Cluster1. Cluster1 will contain two servers. The servers will be configured as shown in the following table.The cluster nodes will not use shared storage. The branch office contains two file servers named Server3 and Server4. You need to ensure that App1 fails over automatically to another server if a single node in Cluster1 fails. What should you do? More than one answer choice may achieve the goal. Select the BEST answer.

Server name	Office
Server2	Main

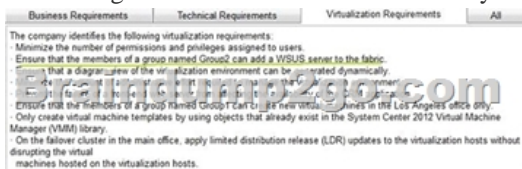
A. Add Server1, Server2, and Server3 to a Network Load Balancing (NLB) cluster.B. Add Server3 as a file share witness for Cluster1.C. Add Server3 and Server4 to a new failover cluster named Cluster2. Install App1 on Cluster2.D. Add Server3 as a node in Cluster1. Answer: B QUESTION 48Your network contains two servers named Server1 and Server2 that run Windows Server 2012. Server1 has the iSCSI Target Server role service installed and is configured to have five iSCSI virtual disks. You install the Multipath I/O (MPIO) feature on Server2. From the MPIO snap-in, you add support for iSCSI devices. You need to ensure that Server2 can connect to the five iSCSI disks. The solution must ensure that Server2 uses MPIO to access the disks. Which three actions should you perform? To answer, move the three appropriate actions from the list of actions to the answer area and arrange them in the correct order.



Explanation:- (Step 1): On the Specify Access Servers page, click Add to specify the iSCSI initiator that will access your iSCSI virtual disk. Doing this opens the Add Initiator ID dialog box- (Step 2): CONFIGURE ISCSI INITIATOR ON CLUSTER-NODES Start the iScsi Initiator control panel by running `iscsicpl` on the command line. You will see a warning about the iScsi Initiator Service. Click Yes to start the service. The properties screen will appear. Type the Target Server (in this scenario the DC) IP address in the Target box and click Quick Connect.The two targets are shown in the dialog box. Click Done. In the iScsi Initiator Properties screen you see the two targets with status Inactive. Highlight the first one and click the Properties button.In the Properties screen click the Add Session button. In the Connect to Target popup window you will get select Enable multi-path and click Advanced. - (Step 3): Reference: Creating a Windows Server 2012 Multipath I/O iScsi Fail-over Cluster Case Study 1: Contoso Ltd Case A (QUESTION 49 - QUESTION 60)OverviewContoso, Ltd. is a recruiting and staffing company that has offices throughout North America. The company has a main office and six branch offices. The main office is located in Miami. The branch offices are located in New York, Seattle, Los Angeles, Montreal, Toronto, and Vancouver. Existing EnvironmentNetwork InfrastructureThe network contains one Active Directory domain named contoso.com.The main office has the following servers:- One file server that maintains multiples shares- Two domain controllers configured as DNS servers- One Windows Server Update Services (WSUS) server- Two

DHCP servers that each have a scope for all of the subnets- Two servers that have Failover Clustering configured and are used as virtualization hosts- One server that has Microsoft SQL Server 2012 installed and maintains a customer relationship management (CRM) database Each branch office has the following servers:- One domain controller configured as a DNS server- One DHCP server that has a single scope for its respective office Each office has a single subnet. The network speed of the local area network (LAN) is 1 gigabit per second. All of the offices have a high-speed connection to the Internet. The offices connect to each other by using VPN appliances. Current Issues Users report that it can take a long time to download files from network shares in the main office. A root cause analysis identifies that network traffic peaks when the users experience this issue. Requirements Planned Changes The company plans to implement the following changes:- Replace all of the domain controllers with new servers that run Windows Server 2012.- Upgrade the CRM application to use a web-based application that connects to the current CRM database. The web application will store session data in the memory of each web server.- Initially, deploy two front-end web servers to two virtual machines. Additional virtual web servers will be deployed in the future.- Monitor the availability of the CRM application and create alerts when the overall availability is less than 99 percent.- Implement Microsoft System Center 2012 to manage the new environment. Business Requirements The company identifies the following business requirements: - Minimize hardware costs and software costs whenever possible.- Minimize the amount of network traffic over the VPN whenever possible.- Ensure that the users in the branch offices can access files currently on the main office file server if a Internet link fails. Technical Requirements The company identifies the following technical requirements:- Provide a highly available DHCP solution.- Maintain a central database that contains the security events from all of the servers. The database must be encrypted.- Ensure that an administrator in the main office can manage the approval of Windows updates and updates to third-party applications for all of the users.- Ensure that all of the domain controllers have the ReliableTimeSource registry value in HKEY_LOCAL_MACHINESYSTEMCurrentControlSetServicesW32TimeParameters set to 1, even if an administrator changes that value manually. Virtualization Requirements The company identifies the following virtualization requirements: - Minimize the number of permissions and privileges assigned to users.- Ensure that the members of a group named Group2 can add a WSUS server to the fabric.- Ensure that a diagram view of the virtualization environment can be generated dynamically.- Minimize the amount of administrative effort required to manage the virtualization environment.- Prevent the failure of a front-end web server from affecting the availability of the CRM application.- Ensure that the members of a group named Group1 can create new virtual machines in the Los Angeles office only.- Only create virtual machine templates by using objects that already exist in the System Center 2012 Virtual Machine Manager (VMM) library.- On the failover cluster in the main office, apply limited distribution release (LDR) updates to the virtualization hosts without disrupting the virtual machines hosted on the virtualization hosts. QUESTION 49 You are planning the delegation for the virtualization environment. The delegation must meet the virtualization requirements. Which user role profile should you select for Group2? A. Delegated Administrator B. Read-Only Administrator C. Administrators D. Self-Service User

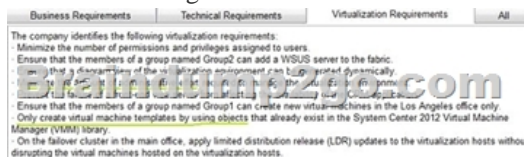
Answer: C Explanation:



Only administrators can add a Windows Server Update Services (WSUS) server to VMM to enable updates of the VMM fabric through VMM.

<http://technet.microsoft.com/en-us/library/gg696971.aspx> QUESTION 50

You need to create a virtual machine template for the web servers used by the CRM application. The solution must meet the virtualization requirements. What should you use? A. An .iso image B. A virtual machine C. A Windows PowerShell script D. A virtual hard disk (VHD) Answer: D Explanation:



A Virtual Machine Manager template provides a standardized group of hardware and software settings that can be used repeatedly to create new virtual machines configured with those settings. In Library view in the Administrator Console, you can use the **New template** option to open the New Template Wizard used to create a virtual machine template. All virtual machines created from a template are configured with the same settings. If you want to create a virtual machine with a blank virtual hard disk on which you install an operating system later, you must use the New Virtual Machine Wizard rather than the New Template Wizard that is described in this topic. For more information about using the New Virtual Machine Wizard, see [Creating Virtual Machines](#).

<http://technet.microsoft.com/en-us/library/bb740838.aspx> QUESTION 51 You are planning the deployment of System Center 2012 Virtual Machine Manager (VMM). You need to identify which additional System Center 2012 product is required to meet the

visualization requirements. What should you include in the recommendation? A. Service Manager B. Operations Manager C. Configuration Manager D. App Controller Answer: B Explanation:



System Center 2012 – Operations Manager provides infrastructure monitoring that is flexible and cost-effective, helps ensure the predictable performance and availability of vital applications, and offers comprehensive monitoring for your datacenter and cloud, both private and public.

<http://technet.microsoft.com/en-us/library/jj656649.aspx> QUESTION 52 You

need to recommend a solution that resolves the current file server issue. The solution must meet the business requirements. What should you include in the recommendation? A. Distributed File System (DFS) B. BranchCache in distributed cache mode C. BranchCache in hosted cache mode D. A storage pool Answer: A Explanation: Scenarios for Using DFS By using from DFS-N and DFS Replication, your organization can benefit from several implementation scenarios including: - Sharing files across branch offices - Data collection - Data distribution - Sharing Files Across Branch Offices Organizations with multiple physical offices tend to share files or collaborate between offices. You can use DFS Replication to replicate files between these offices, or from branch offices to a hub site. This form of replication helps reduce wide area network (WAN) traffic, and provides high availability should a WAN link or a server fail. DFS Replication ensures that when changes are made to a file, the changes are replicated to all other sites by using delta replication. !!!RECOMMEND!!! 1. | 2016.10 Latest 70-414 Exam Dumps (PDF & VCE) 252Q&As Download: <http://www.braindump2go.com/70-414.html> 2. | 2016.10 Latest 70-414 Exam Questions & Answers: <https://drive.google.com/folderview?id=0B75b5xYLjSSnfjFDZEI5S31VWkV0YXR5RGw2VlI0VndGN3VodlRkxZ1NTempJdTQ1emZmTWm&usp=sharing>