

New Updated Microsoft 70-246 Practice Tests Questions Offered By Braindump2go Guarantee You A 100% Full Success (161-170)

New Released Braindump2go Microsoft 70-246 Dumps PDF - Questions and Answers Updated with Microsoft Official Exam Center! Visit Braindump2go and download our 70-246 Exam Questions Now, Pass 70-246 100% at your first time! Vendor: MicrosoftExam Code: 70-246Exam Name: Private Cloud Monitoring and Operations with System Center 201

Compared Before Buying	
Pass4sure	100%
Not In Stock	182 Q&A
/	\$99.99
/	Coupon

QUESTION 161Your network contains an Active Directory domain named contoso.com that connects to a Windows Azure environment. You deploy System Center 2012 R2 Data Protection Manager (DPM) to the domain. You need to ensure that you can use DPM to back up to the Windows Azure environment. Which three actions should you perform? Each correct answer presents part of the solution. A. From Windows Azure, create an endpoint. B. On the DPM server, allow inbound traffic on TCP port 135. C. Install the Windows Azure Backup agent. D. Install a certificate on the DPM server and the upload the certificate to Windows Azure. E. Create a backup vault. Answer: CDE Explanation: C. From Windows Azure Backup, install the agent on each DPM server you want to backup online. D. Install a certificate on the DPM server and the upload the certificate to Windows Azure. E. Create a backup vault. The following two TechNet articles cover this topic fairly well.

<http://technet.microsoft.com/en-us/library/dn296608.aspx> <http://technet.microsoft.com/en-us/library/jj728748.aspx>

QUESTION 162 Drag and Drop Questions You have a System Center 2012 R2 infrastructure that has Operations Manager installed. Your company is testing a custom application named App1. App1 is deployed to a test server named Server1. Server1 runs Windows Server 2012 R2. You push the Operations Manager agent to Server1 and you start to receive alerts from Server1. You need to give a team of developers historical traces of App1. The developers will store the traces in Team Foundation Server (TFS). Which three actions should you perform in sequence? To answer, move the appropriate actions from the list of actions to the answer area and arrange them in the correct order.

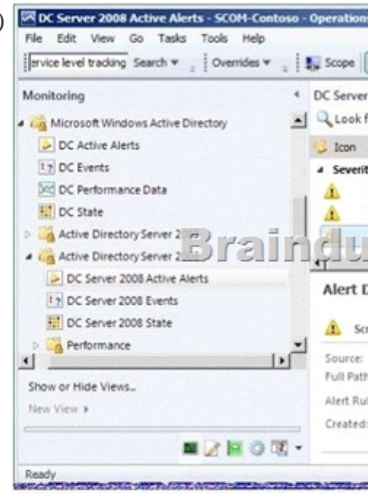
Actions	Answer Area
Configure an Alert Attachment discovery rule.	
Import the Alert Attachment Management Pack.	
Configure an IntelliTrace collection.	
Import the IntelliTrace Profiling Management Pack.	
Import the System Center Management Pack for Windows Server Operating System.	

Answer:

Actions	Answer Area
Configure an Alert Attachment discovery rule.	Import the Alert Attachment Management Pack.
Import the Alert Attachment Management Pack.	Import the IntelliTrace Profiling Management Pack.
Configure an IntelliTrace collection.	Configure an IntelliTrace collection.
Import the IntelliTrace Profiling Management Pack.	
Import the System Center Management Pack for Windows Server Operating System.	

QUESTION 163Your company has a private cloud that contains a System Center 2012 R2 infrastructure. You have a server named Server1 that runs Windows Server 2012 R2. Server1 hosts a Java-based application. You need to ensure that you can monitor exceptions generated by the application. Which three actions should you perform? Each correct answer presents part of the solution.

A. Deploy the Java Application Performance Monitoring agent to Server1. B. Import the Management Pack for Java Application Performance Monitoring (APM). C. Deploy JavaBeans to Server1. D. Import the Management Pack for Java Enterprise Edition (JEE). E. Deploy JavaBeans to the Operations Manager server. Answer: ABD QUESTION 164 Your network contains an Active Directory domain named contoso.com. The domain contains a domain controller named DC1 and a member server named Server1. You have a server named Server2 that is a member of a workgroup. All servers run Windows Server 2012 R2. Server1 has System Center 2012 R2 Operations Manager installed. DC1 is configured as an enterprise certification authority (CA). Server1 and DC1 are located on the internal network. Server2 is located on a perimeter network. You need to monitor Server2 by using Operations Manager. Which three actions should you perform? Each correct answer presents part of the solution. A. Request and install a certificate on Server2, and then import the certificate to Server1. B. Run the Discovery Wizard on Server1. C. Open port UDP 161 and UDP 162 on the firewall between the internal network and the perimeter network. D. Open port TCP 5723 on the firewall between the internal network and the perimeter network. E. Manually install the Microsoft Monitoring Agent on Server2. F. Request and install a certificate on Server1, and then import the certificate to Server2. Answer: ADEF Explanation: SCOM will authenticate by Kerberos or certificate. In a domain it will be Kerberos. On an untrusted Workgroup Server there is no Kerberos so certificates will be used. - Create certificate for the untrusted Server - Import the certificate on the Operation Manager Server - Open TCP 5723 both directions in Firewall if there is any (like in DMZ) <http://www.toolzz.com/?p=279> QUESTION 165 Your network contains an Active Directory domain named contoso.com. The domain contains a domain controller named DC1 and a server named Server1. You install the management server role on Server1. You install the Operations Manager agent on DC1. You run the Operations Manager console and discover the active alerts shown in the exhibit. (Click the Exhibit button.)



You need to resolve the active alerts. What should you do? A. On DC1, install MOMADAdmin.exe. B. On Server1, install OomADs.msi. C. On Server1, install MOMADAdmin.exe. D. On DC1, install OomADs.msi. Answer: DE Explanation: <http://technet.microsoft.com/en-us/library/hh230736.aspx> You can use MOMAgent.msi to deploy System Center 2012 - Operations Manager agents from the command line. Deploying agents from the command line is also referred to as a manual install. When installing the AD Management pack, please remember to open up the properties for the Agent which the DC is installed and check "Allow this agent to act as a proxy and discover managed objects on other computers." ALSO, please install the "OOMADs.msi" locally on the DC. What is this? This is the Active Directory Management Helper Object. It's not well mentioned in documentation I have read up on. Apparently the "AD Database and Log: The script 'AD Database and Log' failed to create object 'McActiveDir.ActiveDirectory'. The error returned was: '?ActiveX component can't create object' (0x1AD)" error is a result of not having this component installed "The file which is installed automatically on a push install via a Management Server can be copied and manually installed from the OpsMgr software -- there is a HelpObjects folder where oomADs.msi can be run from." QUESTION 166 You have a System Center 2012 R2 infrastructure. You plan to implement the Audit Collection Service (ACS). ACS reports will not be available from the Operations Manager console. You need to recommend a solution to view the ACS reports. What should you include in the recommendation? A. A Microsoft SQL Server Reporting Services (SSRS) instance. B. A reporting services point in Configuration Manager. C. A Reporting data warehouse for Service Manager. D. A Microsoft SharePoint Server report library. Answer: A QUESTION 167 Your company has a private cloud that is managed by using a System Center 2012 infrastructure. The network contains a Service Manager infrastructure. The company implements a service level agreement (SLA) for the private cloud. You need to recommend an escalation notification solution for when an SLA warning threshold is exceeded.

What should you include in the recommendation? A. a subscription B. a Desired Configuration Management Event Workflow Configuration C. an incident event workflow D. a monitor E. a rule
 Answer: C
 Explanation: You can use the following procedure to create a workflow rule that will change the support tier to Tier 2 whenever the Urgency property of an incident that is related to printing problems is changed to High. This procedure assumes that you already created an incident template to change the support tier to Tier 2, and it assumes that you already created the priority calculation table. For more information, see How to Set Incident Priority and "To create a new printer-related incident template" in How to Create Incident Templates.

<http://technet.microsoft.com/en-us/library/ff461123.aspx> QUESTION 168 You have a System Center 2012 Operations Manager infrastructure. You have a line-of-business web application named Appl. App1 stores its information in a dedicated Microsoft SQL Server database. Your company defines a service level agreement (SLA) for App1 of at least 98 percent uptime. You need to implement a solution that measures the availability of Appl. You create a distributed application for Appl. What should you create next? A. a monitor B. a Monitor state SLOC. a Collection rule SLOD. a rule
 Answer: B
 Explanation:

<http://blogs.technet.com/b/server-cloud/archive/2011/11/11/application-performance-monitoring-with-operations-manager-2012.aspx>

QUESTION 169 Your company has a private cloud that contains a System Center 2012 infrastructure. The network contains a Service Manager infrastructure and a Configuration Manager infrastructure. You create a configuration baseline for desired configuration management. You need to ensure that an incident is created automatically in Service Manager when a device is non-compliant. You install the Configuration Manager connector for Service Manager. What should you do next? A. Create a Desired Configuration Management Event Workflow Configuration. B. Create a service level objective (SLO) for the desired configuration management incident. C. Create an incident template. D. Import the Configuration Manager Management Packs.
 Answer: A
 Explanation: A connector is required to bring data from Configuration Manager into Service Manager. From there, you create a Desired Configuration management Event Workflow. Using Connectors to Import Data into System Center 2012 - Service Manager <http://technet.microsoft.com/en-us/library/hh524326.aspx> How to Configure Desired Configuration Management to Generate Incidents <http://technet.microsoft.com/en-us/library/hh495577.aspx> Gol:

<http://technet.microsoft.com/en-us/library/ff460938> In System Center Service Manager 2010 Service Pack 1 (SP1), you can import configuration baselines from System Center Configuration Manager 2007 by using a Configuration Manager connector. Then, you can configure Service Manager to create incidents for each Service Manager configuration item that is reported as noncompliant against the defined values. You can use the following procedures to configure incident management to automatically generate desired configuration management-based incidents. To configure incident management to automatically generate desired configuration management based incidents
 1. In the Service Manager console, click Administration.
 2. In the Administration pane, expand Workflows, and then click Configuration.
 3. In the Configuration pane, double-click Desired Configuration Management Event Workflow Configuration.
 4. In the Configure Desired Configuration Management Workflows dialog box, click Add.

<http://technet.microsoft.com/en-us/library/ff460938.aspx> QUESTION 170 Your company has a private cloud that contains a System Center 2012 Service Manager instance. Service Manager has the Self-Service Portal installed. You create a service offering that contains a single request offering. The service offering provides logged-on users with the ability to add their user account automatically to a group named Group1. You need to ensure that all requests for group membership changes require approval from the security department. What should you modify? A. the request offering B. the service request template C. the service offering D. the Service Offering Category list
 Answer: B
 Explanation:

<http://syscen.blogspot.com/2012/01/automating-new-user-creation-with-scsm.html>

<http://syscen.blogspot.com/2012/02/automating-new-user-creation-with-scsm.html>

http://syscen.blogspot.com/2012/02/automating-new-user-creation-with-scsm_09.html

http://syscen.blogspot.com/2012/02/automating-new-user-creation-with-scsm_15.html

1. Create Runbook Automated Activity Template
 2. Extend service request class
 3. Create Service Request template using the new Class and include the Runbook Automated Activity Template.
 4. Create the Service Request Offering.
 Latest 70-246 Questions and Answers from Microsoft Exam Center Offered by Braindump2go for Free Share Now! Read and remember all Real Questions Answers, Guaranteed Pass 70-246 Real Test 100% Or Full Money Back!

Compared Before Buying Microsoft 70-246 PDF & VCE!		
Pass4sure	Braindump2go	TestKing
Not In Stock	100% Pass OR Money Back 182 Q&As	50 Q&As
/	\$99.99	\$124.99
/	Coupon Code: BDNT2014	/

<http://www.braindump2go.com/70-246.html>