

New Updated Microsoft 70-158 Practice Tests Questions Offered By Braindump2go Guarantee You A 100% Full Success (31-40)

Do you want to pass Microsoft 70-158 Exam ? If you answered YES, then look no further. Braindump2go offers you the best 70-158 exam questions which cover all core test topics and certification requirements. All REAL questions and answers from Microsoft Exam Center will help you be a 70-158 certified! Vendor: Microsoft Exam Code: 70-158 Exam Name: Forefront Identity Manager 2010, Configuring Keywords: 70-158 Exam Dumps, 70-158 Practice Tests, 70-158 Practice Exams, 70-158 Exam Questions, 70-158 PDF, 70-158 VCE Free, 70-158 Book, 70-158 E-Book, 70-158 Study Guide, 70-158 Braindump, 70-158 Prep Guide

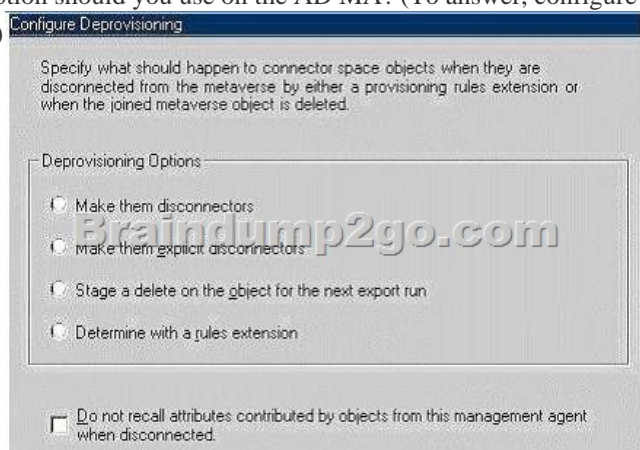
Compa
Pas
92 Q&As -
\$109.99
No Discou

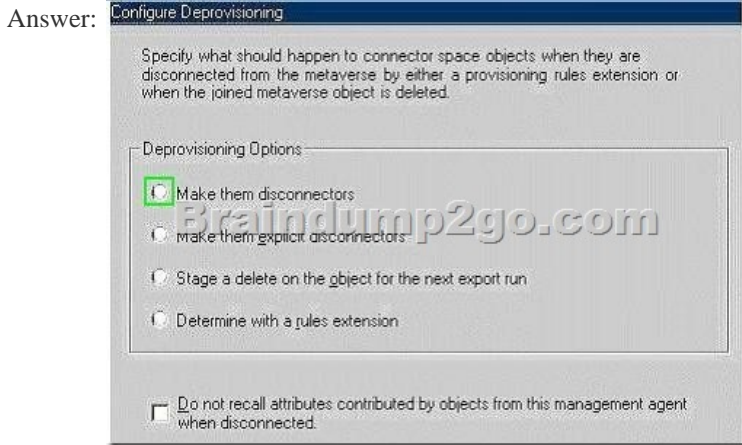
QUESTION 31 You use Forefront Identity Manager (FIM) 2010 in your company network. You install the FIM Service as a stand-alone server. During the creation process of the FIM Service Management Agent (MA), you are unable to connect to the FIM Service database by using Windows integrated authentication. You run a Windows PowerShell script to verify the FIM MA account. You discover a mismatch in the SIDs of the FIM MA account and registry configuration. You need to create the FIM MA. You need to achieve this goal without editing the registry. What should you do? A. Reconnect to the FIM Service database by using the credentials associated with the FIM MA account SID supplied by the Windows PowerShell script. B. Run the FIM Service and Portal program in Change mode. Configure Common Services to use a new FIM Service account and password. C. Add the FIM MA account to the Local Administrators group of the connected domain controller. D. Connect to the FIM database by using SQL authentication mode. Answer: B

QUESTION 32 You administer a Forefront Identity Manager (FIM) 2010 server in your company network. You create a new workflow. The workflow includes a Function Evaluator activity that calculates a string value. You need to pass the calculated value to an outbound Synchronization Rule Activity. What should you do? (Each correct answer presents part of the solution. Choose all that apply.) A. Use the CRLF function within the Function Evaluator activity. B. Define a workflow parameter within the outbound synchronization rule. C. Use [//WorkflowData/String] as a parameter value of the Synchronization Rule Activity. D. Use [//RequestParameter/AllChangesTable] as a parameter value of the Synchronization Rule Activity. E. Use [//WorkflowData/String] as a value for the Destination field within the Function Evaluator activity. Answer: BCE

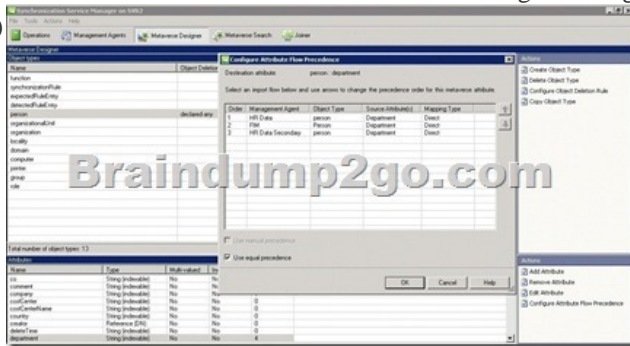
QUESTION 33 You administer a Forefront Identity Management (FIM) 2010 server in your company network. You create a FIM e-mail template of the Complete type. You need to configure a workflow activity that uses the template to send an e-mail message to a user if the user request is rejected. What should you do? (Each correct answer presents part of the solution. Choose all that apply.) A. Create an Authorization workflow. B. Create an Action workflow. C. Change the e-mail template type to Approval. D. Change the e-mail template type to Denied. E. Create a new set and include the template in the set. F. Add the template to the All Email Templates set as a Manually managed member. Answer: AD

QUESTION 34 Hotspot Question You deploy Forefront Identity Manager (FIM) 2010 in your company network to provide an identity management solution between Active Directory Domain Services (AD DS) and enterprise HR applications. You create an Active Directory Management Agent (AD MA) to manage users and groups between the two directory services. You need to ensure that when a metaverse object is deleted, orphaned objects must be processed according to the following requirements: - Users must be disabled in AD. Contacts must be deleted. - Memberships of groups must be removed. Which deprovisioning option should you use on the AD MA? (To answer, configure the appropriate option or options in the dialog box in the answer area.)





QUESTION 35 You use Forefront Identity Manager (FIM) 2010 in your company network. The HR department has multiple Microsoft SQL Server databases. Each of these databases has Management Agents (MAs) configured as shown in the exhibit. (Click the Exhibit button.)



You need to ensure that the MAs of HR Data and HR Data Secondary act as authoritative sources for the Department attribute. What should you do? (Choose all that apply.) A. Clear the Use equal precedence check box. B. Select the Use manual precedence check box. C. Configure the Department import attribute flows as Direct. D. Configure the Department import attribute flows as Advanced (Rules Extension). E. Configure the Department export attribute flows as Advanced (Rules Extension). F. Increase the order of precedence of HR Data and HR Data Secondary. Answer: ABD

QUESTION 36 You deploy Forefront Identity Manager (FIM) 2010 in your company network to provide an identity management solution between an HR application and Active Directory Domain Services (AD DS). Part of the solution includes two Management Agents of the following types: AD DS Management Agent (AD MA) HR Management Agent (HR MA). You need to prevent the critical loss of objects in the HR connector space and in the connected HR data source. You configure Run Profiles. What should you do next? A. Specify the custom data of the batch size (objects). B. Specify the custom data of the page size (objects). C. Enable the Specify the number of deletions to process option. D. Enable the Specify the number of objects to process option. Answer: C

QUESTION 37 You deploy Forefront Identity Manager (FIM) 2010 in your company network to provide an identity management solution between Active Directory Domain Services (AD DS) and an HR application. You create a new HR Management Agent (MA) to synchronize changes in HR objects with AD DS objects. You need to ensure that after changes are imported, only those new changes will be synchronized. Which Run Profiles step should you use to configure the new MA? A. Full Import and Full Synchronization B. Delta Import and Delta Synchronization C. Full import (Stage only) followed by Delta Synchronization D. Delta Import (Stage only) followed by Full Synchronization E. Delta Import (Stage only) followed by Delta Synchronization Answer: B

QUESTION 38 You use Forefront Identity Manager (FIM) 2010 to provision user accounts between Active Directory Domain Services (AD DS) and multiple external directory services. You create a new Management Agent (MA) to synchronize Active Directory accounts with a third-party directory service. You need to confirm that the account objects will be joined to the correct metaverse object. What should you do? A. Use MPR Explorer. B. Use the Metaverse Search feature. C. Generate a run synchronization preview. D. From the Set Log File Options_ Import dialog box, enable the Resume run from existing log file and stage to the connector space (Test only) option. Answer: C

QUESTION 39 You use Forefront Identity Manager (FIM) 2010 in your company network. The fullName attribute is used to generate a unique logon name for each user by using a FIM Workflow activity. Before users objects are created in the metaverse, the FIM environment

performs a collision check to confirm whether a unique fullName attribute exists. You discover that users having duplicate fullName attributes are not being created. You need to find out the cause of the issue. What should you do? A. Review expected rule entries. B. Review declarative provisioning rules. C. Examine custom action workflow activities. D. Examine the Management Agent responsible for connecting the data sources that contain the duplicate user objects during inbound synchronization. Answer: C

QUESTION 40 You use Forefront Identity Manager (FIM) 2010 in your company network. You receive the following error: Object "CN=BartDuncan, OU=FIMObjects, DC=Contoso, DC=com" does not have a parent object in management agent "ContosoADMA". You need to find out the cause of the error. What should you do? (Choose all that apply.) A. Verify whether the correct containers and partitions are selected in the ContosoADMA configuration. B. Verify whether connector space objects have been staged during the import operation. C. Verify whether connector space objects have been staged during the export operation. D. Verify whether a rules extension for the Contoso AD MA has been misconfigured. E. Examine the DN of the inbound synchronization rule for typographical errors. F. Examine the DN of the outbound synchronization rule for typographical errors. Answer: ABDF

Want to be 70-158 certified? Using Braindump2go New Released 70-158 Exam Dumps Now! We Promise you a 100% Success Passing Exam 70-158 Or We will return your money back instantly!

Compared Before Buying Microsoft 70-158 PDF & VCE!		
Pass4sure	Braindump2go	Test King
	100% Pass OR Money Back	
92 Q&As – Practice	102 Q&As – Real Questions	Not In Stock
\$109.99	\$99.99	/
No Discount	Coupon Code: BDNT2014	/

<http://www.braindump2go.com/70-158.html>