

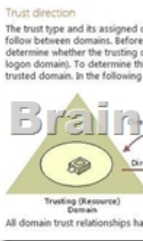
## [New-Sep.-2016] Microsoft 70-412 391q PDF and VCE Files Free Offered By Braindump2go[NQ28-NQ33]

2016/09 New Microsoft 70-412: Configuring Advanced Windows Server 2012 R2 Services Exam Questions Updated Today! Free Instant Download 70-412 Exam Dumps (PDF & VCE) 391Q&As from Braindump2go.com Today! 100% Real Exam Questions! 100% Exam Pass Guaranteed! 1. | 2016/09 Latest 70-412 Exam Dumps (PDF & VCE) 391Q&As Download:

<http://www.braindump2go.com/70-412.html> 2. | 2016/09 Latest 70-412 Exam Questions & Answers:

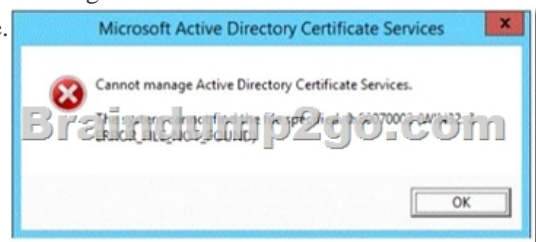
<https://drive.google.com/folderview?id=0B75b5xYLjSSNfmRFQIVyM3hBV08tdktJemFuX2tMVUhWdlNpTVdkZ3B1X3hEVU5BaEzSZGM&usp=sharing> QUESTION 28 Your network contains an Active Directory forest. The forest contains two

domains named contoso.com and fabrikam.com. The functional level of the forest is Windows Server 2003. You have a domain outside the forest named adatum.com. You need to configure an access solution to meet the following requirements:- Users in adatum.com must be able to access resources in contoso.com. - Users in adatum.com must be prevented from accessing resources in fabrikam.com. - Users in both contoso.com and fabrikam.com must be prevented from accessing resources in adatum.com. What should you create? A. a one-way realm trust from contoso.com to adatum.com B. a one-way realm trust from adatum.com to contoso.com C. a one-way external trust from contoso.com to adatum.com D. a one-way external trust from adatum.com to contoso.com Answer: C Explanation: domain names were changed, so understand the question well You need to make trust relationship where domain contoso.com trusts adatum.com. [http://technet.microsoft.com/en-us/library/cc728024\(v=ws.10\).aspx](http://technet.microsoft.com/en-us/library/cc728024(v=ws.10).aspx)



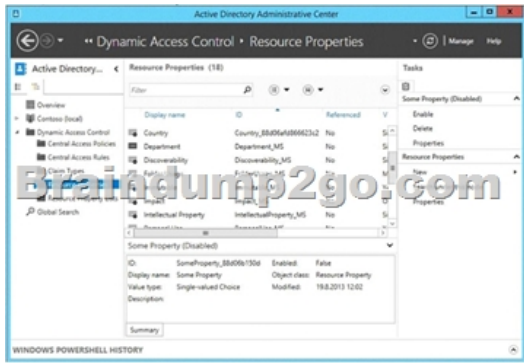
QUESTION 29 Your network contains an Active Directory domain named contoso.com. The domain contains a main office and a branch office. An Active Directory site exists for each office. All domain controllers run Windows Server 2012 R2. The domain contains two domain controllers. DC1 hosts an Active Directory- integrated zone for contoso.com. You add the DNS Server server role to DC2. You discover that the contoso.com DNS zone fails to replicate to DC2. You verify that the domain, schema, and configuration naming contexts replicate from DC1 to DC2. You need to ensure that DC2 replicates the contoso.com zone by using Active Directory replication. Which tool should you use? A. Dnscmd B. Dnslint C. Repadmin D. Ntdsutile E. DNS Manager F. Active Directory Sites and Services G. Active Directory Domains and Trusts H. Active Directory Users and Computers Answer: F Explanation: [http://technet.microsoft.com/en-us/library/cc739941\(v=ws.10\).aspx](http://technet.microsoft.com/en-us/library/cc739941(v=ws.10).aspx) If you see question about AD Replication, First preference is AD sites and services, then Repadmin and then DNSLINT.

QUESTION 30 Your network contains an Active Directory forest named contoso.com. The forest contains four domains. All servers run Windows Server 2012 R2. Each domain has a user named User1. You have a file server named Server1 that is used to synchronize user folders by using the Work Folders role service. Server1 has a work folder named Sync1. You need to ensure that each user has a separate folder in Sync1. What should you do? A. From Windows Explorer, modify the Sharing properties of Sync1. B. Run the Set-SyncServerSetting cmdlet. C. From File and Storage Services in Server Manager, modify the properties of Sync1. D. Run the Set-SyncShare cmdlet. Answer: D Explanation: <http://technet.microsoft.com/en-US/library/dn296649.aspx> PS C:> Set-SyncShare Share01 -User "ContosoGroup" QUESTION 31 You have a server named Server1 that runs Windows Server 2012 R2. From Server Manager, you install the Active Directory Certificate Services server role on Server1. A domain administrator named Admin1 logs on to Server1. When Admin1 runs the Certification Authority console, Admin1 receive the following error message.



You need to ensure that when Admin1 opens the Certification Authority console on Server1, the error message does not appear.

What should you do? A. Run the Install-AdcsCertificationAuthority cmdlet. B. Install the Active Directory Certificate Services (AD CS) tools. C. Modify the PATH system variable. D. Add Admin1 to the Cert Publishers group. Answer: A Explanation: <http://clintboessen.blogspot.nl/2013/11/cannot-manage-active-directory.html> QUESTION 32 Hotspot Question Your network contains an Active Directory domain named contoso.com. The domain contains a domain controller named DC1 and a server named Server1. Both servers run Windows Server 2012 R2. You configure the classification of a share on Server1 as shown in the Share1 Properties exhibit. (Click the Exhibit button.) You configure the resource properties in Active Directory as shown in the Resource Properties exhibit. (Click the Exhibit button.)



You need to ensure that the Impact classification can be assigned to Share1 immediately. Which cmdlet should you run on each server? To answer, select the appropriate cmdlet for each server in the answer area.

**Answer Area**

DC1:

- Add-AdResourcePropertyListMember
- New-AdResourceProperty
- Set-AdResourceProperty
- Set-AdResourcePropertyList

Server1:

- Get-FsrmClassificationPropertyDefinition
- Start-FsrmClassification
- Wait-FsrmClassification
- Update-FsrmClassificationPropertyDefinition

**Answer:**

**Answer Area**

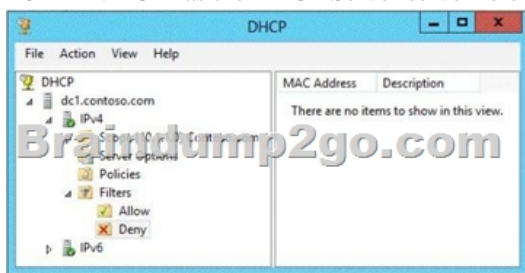
DC1:

- Add-AdResourcePropertyListMember
- New-AdResourceProperty
- Set-AdResourceProperty
- Set-AdResourcePropertyList

Server1:

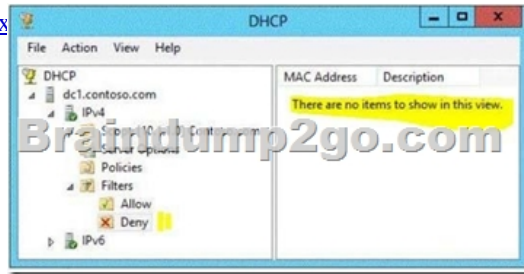
- Get-FsrmClassificationPropertyDefinition
- Start-FsrmClassification
- Wait-FsrmClassification
- Update-FsrmClassificationPropertyDefinition

QUESTION 33 Your network contains an Active Directory domain named contoso.com. The domain contains a domain controller named DC1 that runs Windows Server 2012 R2. DC1 has the DHCP Server server role installed. DHCP is configured as shown in the exhibit. (Click the Exhibit button.)



You discover that client computers cannot obtain IPv4 addresses from DC1. You need to ensure that the client computers can obtain IPv4 addresses from DC1. What should you do? A. Activate the scope. B. Authorize DC1. C. Disable the Allow filters. D. Disable the Deny filters. Answer: C Explanation: There is no item in the deny list. So it means that client computers MAC addresses is not listed in the allow list. So we have to disable the "Allow Filters"

[http://technet.microsoft.com/en-us/library/ee956897\(v=ws.10\).aspx](http://technet.microsoft.com/en-us/library/ee956897(v=ws.10).aspx)



!!!RECOMMEND!!! 1. |2016/09 Latest 70-412 Exam Dumps (PDF & VCE) 391Q&As Download:

<http://www.braindump2go.com/70-412.html> 2. |2016/09 Latest 70-412 Exam Questions & Answers:

<https://drive.google.com/folderview?id=0B75b5xYLjSSNfmRFQIVyM3hBV08tdktJemFuX2tMVUhwdlNpTVdkZ3B1X3hEVU5BaEZSZGM&usp=sharing>