

[New-Sep.-2016] 100% Success-Braindump2go 70-410 PDF Dumps & 70-410 VCE Dumps 485q Instant Download[NQ26-NQ30]

2016/09 New Microsoft 70-410: Installing and Configuring Windows Server 2012 R2 Exam Questions Updated Today! Free Instant Download 70-410 Exam Dumps (PDF & VCE) 485Q&As from Braindump2go.com Today! 100% Real Exam Questions! 100% Exam Pass Guaranteed! 1. | 2016/09 Latest Microsoft 70-410 Exam Dumps (PDF & VCE) 485Q&As Download:

<http://www.braindump2go.com/70-410.html> 2. | 2016/09 Latest Microsoft 70-410 Exam Questions & Answers:

<https://drive.google.com/folderview?id=0B75b5xYLjSSNfjBSYTIYY1lpNFI3MmhuSGFGVWtsT3RfTjRUcjdlNTlnNUJXbnMzajJlQ0U&usp=sharing> QUESTION 26 Drag and Drop Question Your network contains two Active Directory forests named

adatum.com and contoso.com. Both forests contain multiple domains. A two-way trust exists between the forests. The contoso.com domain contains a domain local security group named Group1. Group1 contains contosouser1 and adatumuser1. You need to ensure that Group1 can only contain users from the contoso.com domain. Which three actions should you perform? To answer, move three actions from the list of actions to the answer area and arrange them in the correct order.

Actions	Answer Area
Remove adatum\user1 from Group1.	
Remove contoso\user1 from Group1.	
Convert Group1 to a distribution group.	
Convert Group1 to a universal group.	

Answer:

Actions	Answer Area
Remove adatum\user1 from Group1.	Remove adatum\user1 from Group1.
Remove contoso\user1 from Group1.	Convert Group1 to a universal group.
Convert Group1 to a distribution group.	Convert Group1 to a global group.
Convert Group1 to a universal group.	

Explanation: Domain local Groups that are used to grant permissions within a single domain. Members of domain local groups can include only accounts (both user and computer accounts) and groups from the domain in which they are defined.----- to review..... Universal groups can only include objects from its own forest Groups can have -- domain local, built-in local, global, and universal. That is, the groups have different areas in different scopes which they are valid. A domain local group is a security or distribution group that can contain universal groups, global groups, other domain local groups from its own domain, and accounts from any domain in the forest. You can give domain local security groups rights and permissions on resources that reside only in the same domain where the domain local group is located. A global group is a group that can be used in its own domain, in member servers and in workstations of the domain, and in trusting domains. In all those locations, you can give a global group rights and permissions and the global group can become a member of local groups. However, a global group can contain user accounts that are only from its own domain. A universal group is a security or distribution group that contains users, groups, and computers from any domain in its forest as members. You can give universal security groups rights and permissions on resources in any domain in the forest. Universal groups are not supported. Domain local - Groups that are used to grant permissions within a single domain.

Members of domain local groups can include only accounts (both user and computer accounts) and groups from the domain in which they are defined. Built-in local - Groups that have a special group scope that have domain local permissions and, for simplicity, are often referred to as domain local groups. The difference between built-in local groups and other groups is that built-in local groups can't be created or deleted. You can only modify built-in local groups. References to domain local groups apply to built-in local groups unless otherwise noted. Global - Groups that are used to grant permissions to objects in any domain in the domain tree or forest. Members of global groups can include only accounts and groups from the domain in which they are defined. Universal - Groups that are used to grant permissions on a wide scale throughout a domain tree or forest. Members of global groups include accounts and groups from any domain in the domain tree or forest. Global to universal. This conversion is allowed only if the group that you want to change is not a member of another global scope group. Domain local to universal. This conversion is allowed only

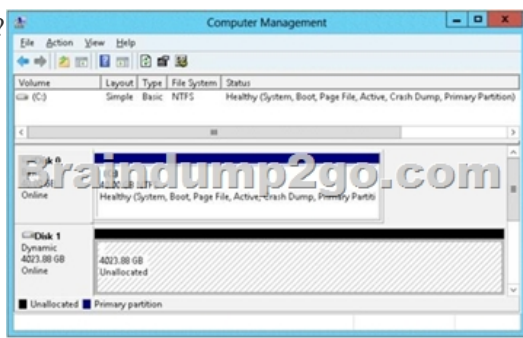
if the group that you want to change does not have another domain local group as a member. Universal to global. This conversion is allowed only if the group that you want to change does not have another universal group as a member. Universal to domain local. There are no restrictions for this operation. <http://technet.microsoft.com/en-us/library/bb726978.aspx>

[http://technet.microsoft.com/en-us/library/cc755692\(v=ws.10\).aspx](http://technet.microsoft.com/en-us/library/cc755692(v=ws.10).aspx) QUESTION 27 Your network contains an Active Directory domain named contoso.com. You discover that when you join client computers to the domain manually, the computer accounts are created in the Computers container. You need to ensure that new computer accounts are created automatically in an organizational unit (OU) named Corp. Which tool should you use? A. net.exe B. redircmp.exe C. regedit.exe D. dsadd.exe Answer: B Explanation: A. Used to stop/start protocols B. Redirects the default container for newly created computers to a specified, target organizational unit C. Modify local registry entries D. Adds specific types of objects to the directory Redirects the default container for newly created computers to a specified, target organizational unit (OU) so that newly created computer objects are created in the specific target OU instead of in CN=Computers. You must run the redircmp command from an elevated command prompt.

Redircmp.exe is located in the C:\Windows\System32 folder. You must be a member of the Domain Admins group or the Enterprise Admins group to use this tool. <http://technet.microsoft.com/en-us/library/bb490949.aspx>

[http://technet.microsoft.com/en-us/library/cc770619\(v=ws.10\).aspx](http://technet.microsoft.com/en-us/library/cc770619(v=ws.10).aspx)

[http://technet.microsoft.com/en-us/library/cc753708\(v=ws.10\).aspx](http://technet.microsoft.com/en-us/library/cc753708(v=ws.10).aspx) QUESTION 28 You have a server named Server2 that runs Windows Server 2012 R2. Server2 has the Hyper-V server role installed. The disks on Server2 are configured as shown in the exhibit. (Click the Exhibit button.) You create a virtual machine on Server2 named VM1. You need to ensure that you can configure a pass-through disk for VM1. What should you do?



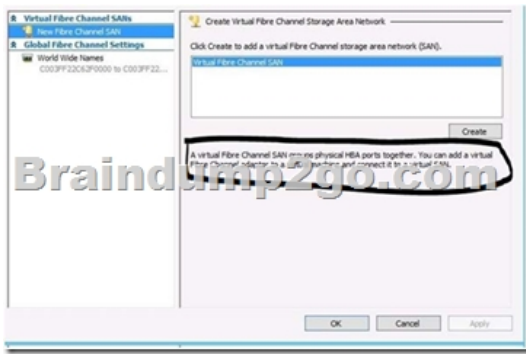
A. Convert Disk 1 to a basic disk. B. Take Disk 1 offline. C. Create a partition on Disk 1. D. Convert Disk 1 to a MBR disk. Answer: B Explanation: <http://blogs.technet.com/b/askcore/archive/2008/10/24/configuring-pass-through-disks-inhyperv.aspx>

Pass-through Disk Configuration Hyper-V allows virtual machines to access storage mapped directly to the Hyper-V server without requiring the volume be configured. The storage can either be a physical disk internal to the Hyper-V server or it can be a Storage Area Network (SAN) Logical Unit (LUN) mapped to the Hyper-V server. To ensure the Guest has exclusive access to the storage, it must be placed in an Offline state from the Hyper-V server perspective QUESTION 29 You have a server named Server1 that runs Windows Server 2012 R2. Server1 has the Hyper-V server role installed. Server1 is connected to two Fibre Channel SANs and is configured as shown in the following table.

Host bus adapter (HBA) name	Fibre Channel SAN name
HBA1	SAN1
HBA2	SAN2
HBA3	SAN1
HBA4	SAN2

You have a virtual machine named VM1. You need to configure VM1 to connect to SAN1. What should you do first? A. Add one HBAB. Create a Virtual Fibre Channel SAN. C. Create a Hyper-V virtual switch. D. Configure network adapter teaming.

Answer: B Explanation: You need your virtualized workloads to connect easily and reliably to your existing storage arrays. Windows Server 2012 provides Fibre Channel ports within the guest operating system, which allows you to connect to Fibre Channel directly from within virtual machines. This feature protects your investments in Fibre Channel, enables you to virtualize workloads that use direct access to Fibre Channel storage, allows you to cluster guest operating systems over Fibre Channel, and provides an important new storage option for servers hosted in your virtualization infrastructure. With this Hyper-V virtual Fibre Channel feature, you can connect to Fibre Channel storage from within a virtual machine. This allows you to use your existing Fibre Channel investments to support virtualized workloads. Support for Fibre Channel in Hyper-V guests also includes support for many related features, such as virtual SANs, live migration, and MPIO.



<http://technet.microsoft.com/en-us/library/hh831413.aspx> QUESTION 30 You work as a senior administrator at L2P.com. The L2P.com network consists of a single domain named L2P.com. All servers on the L2P.com network have Windows Server 2012 installed, and all workstations have Windows 8 installed. You are running a training exercise for junior administrators. You are currently discussing the Always Offline Mode. Which of the following is TRUE with regards to the Always Offline Mode? (Choose all that apply.) A. It allows for swifter access to cached files and redirected folders. B. To enable Always Offline Mode, you have to satisfy the forest and domain functional-level requirements, as well as schema requirements. C. It allows for lower bandwidth usage due to users are always working offline. D. To enable Always Offline Mode, you must have workstations running Windows 7 or Windows Server 2008 R2. Answer: ACE Explanation: Offline Files have four modes of operation: Online Slow link Auto offline Manual offline Offline Files transition between the three modes online, slow link and auto offline depending on connection speed. The user can always override the automatic mode selection by manually switching to manual offline mode. To determine the connection speed two pings with default packet size are sent to the file server. If the average round-trip time is below 80 ms (Windows 7) or 35 ms (Windows 8), the connection is put into online mode, otherwise into slow link mode. The latency value of 35/80 ms is configurable through the Group Policy setting Configure slow-link mode. Reads, Writes and Synchronization In online mode, changes to files are made on the file server as well as in the local cache (this induces a performance hit - see this article for details). Reads are satisfied from the local cache (if in sync). In slow link mode, changes to files are made in the local cache. The local cache is background-synchronized with the file server every 6 hours (Windows 7) or 2 hours (Windows 8), by default. This can be changed through the Group Policy setting Configure Background Sync. . In auto offline mode, all reads and writes go to the local cache. No synchronization occurs. . In manual offline mode, all reads and writes go to the local cache. No synchronization occurs by default, but background synchronization can be enabled through the Group Policy setting Configure Background Sync.

<http://technet.microsoft.com/en-us/library/hh968298.aspx>

<http://helgeklein.com/blog/2012/04/windows-7-offline-files-survival-guide/> !!!RECOMMEND!!! 1.|2016/09 Latest Microsoft 70-410 Exam Dumps (PDF & VCE) 485Q&As Download:<http://www.braindump2go.com/70-410.html> 2.|2016/09 Latest Microsoft 70-410 Exam Questions & Answers:

<https://drive.google.com/folderview?id=0B75b5xYLjSSNfjBSYTIYY1lpNFI3MmhuSGFGVWtsT3RfTjRUcjd1NTlnNUJXbnMzajJlQ0U&usp=sharing>