


New Released Brain Dumps:2015 Braindump2go Microsoft 70-411 Dumps Instant Free Download (121-130)

MICROSOFT OFFICIAL: New Updated 70-411 Exam Questions from Braindump2go 70-411 PDF Dumps and 70-411 VCE Dumps! Welcome to Download the Newest Braindump2go 70-411 VCE&PDF Dumps:
<http://www.braindump2go.com/70-411.html> (322 Q&As) 2015 Latest released Microsoft Official 70-411 Practice Exam Question Free Download From Braindump2go Now! All New Updated 322 Questions And Answers are Real Questions from Microsoft Exam Center! Exam Code: 70-411 Exam Name Administering Windows Server 2012 Certification Provider: Microsoft Corresponding Certifications: MCSA, MCSA: Windows Server 2012, MCSE, MCSE: Desktop Infrastructure, MCSE: Private Cloud, MCSE: Server Infrastructure Keywords: 70-411 Dumps, 70-411 Microsoft Exam Questions, 70-411 VCE, 70-411 PDF, 70-411 Practice Exams, 70-411 Practice Tests, 70-411 Book, 70-411 Study Guide

Administering Windows Server 2012 R2 Exam: 70-411



Product Description Exam Number/Code: 70-411

Exam Number/Code: 70-411

"Administering Windows Server 2012 R2 Exam", also known as 70-411 exam, is a Microsoft Certification. With the complete collection of questions and answers, Braindump2go has assembled to take you through 322 Q&As to your 70-411 Exam preparation. In the 70-411 exam resources, you will cover every field and category in Microsoft MCSA helping to ready you for your successful Microsoft Certification.

Questions and Answers : 322 Q&As
Updated: Sep 14, 2015
\$429.99 **\$99.99**

[PDF DEMO](#)

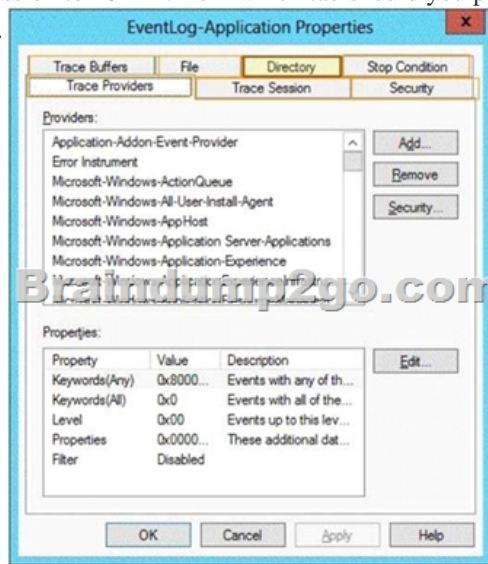
[CHECK OUT](#)

Free Demo Download

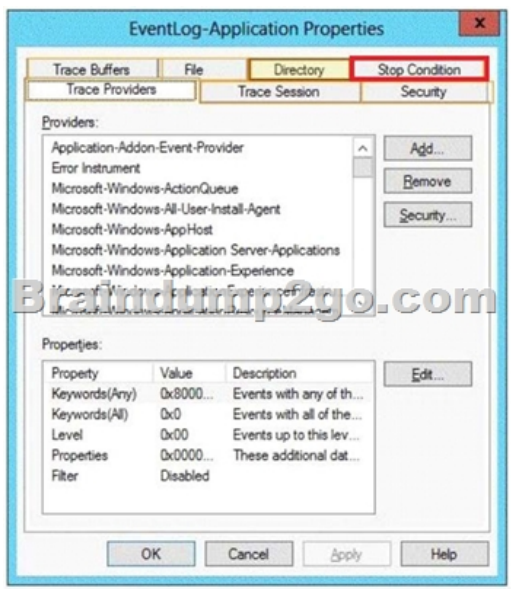
Braindump2go offers free demo for 70-411 exam (Administering Windows Server 2012 R2 Exam). You can check out the interface, question quality and usability of our practice exams before you decide to buy it.

Printable PDF Premium VCE + VCE Simulator

QUESTION 121 Your network contains an Active Directory domain called contoso.com. The domain contains a member server named Server1. Server1 runs Windows Server 2012 R2. You enable the EventLog-Application event trace session. You need to set the maximum size of the log file used by the trace session to 10 MB. From which tab should you perform the configuration? To answer, select the appropriate tab in the answer area.



Answer:



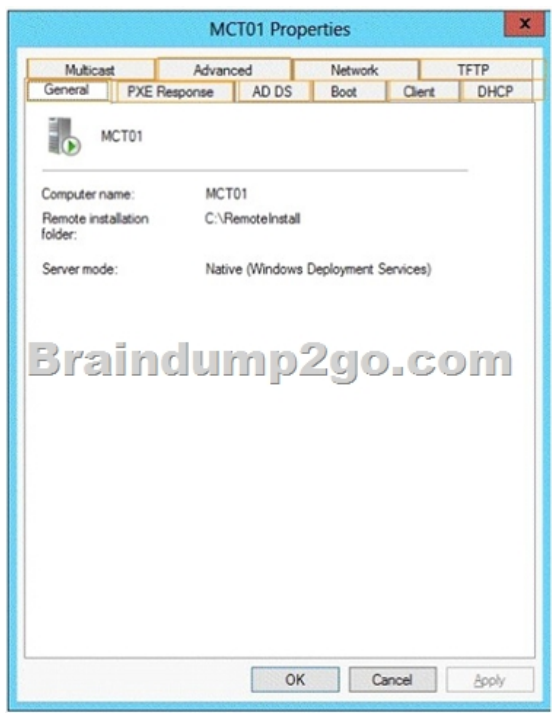
Explanation:Note: By default, logging stops only if you set an expiration date as part of the logging schedule. Using the options on the Stop Condition tab, you can configure the log file to stop automatically after a specified period of time, such as seven days, or when the log file is full (if you've set a maximum size limit).<http://technet.microsoft.com/en-us/magazine/ff458614.aspx>

QUESTION 122Your network contains an Active Directory domain named contoso.com. The domain contains a member server named Server1. All servers run Windows Server 2012 R2. You need to collect the error events from all of the servers on Server1. The solution must ensure that when new servers are added to the domain, their error events are collected automatically on Server1. Which two actions should you perform? (Each correct answer presents part of the solution. Choose two.) A. On Server1, create a collector initiated subscription.B. On Server1, create a source computer initiated subscription.C. From a Group Policy object (GPO), configure the Configure target Subscription Manager setting.D. From a Group Policy object (GPO), configure the Configure forwarder resource usage setting. Answer: BCExplanation:B: To set up a Source-Initiated Subscription with Windows Server 2003/2008 so that events of interest from the Security event log of several domain controllers can be forwarded to an administrative workstatioC: * Group PolicyThe forwarding computer needs to be configured with the address of the server to which the events are forwarded. This can be done with the following group policy setting:Computer configuration-Administrative templates-Windows components-Event forwarding- Configure the server address, refresh interval, and issue certificate authority of a target subscription manager.* Edit the GPO and browse to Computer Configuration | Policies | Administrative Templates | Windows Components | Event Forwarding - Configure the server address, refresh interval, and issuer certificate authority of a target Subscription Manager

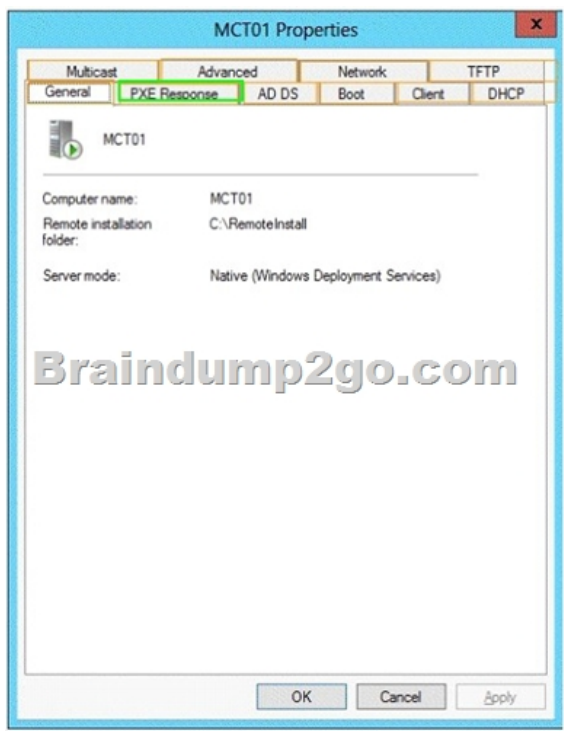
QUESTION 123You have Windows Server 2012 R2 installation media that contains a file named Install.wim. You need to identify which images are present in Install.wim.What should you do? A. Run imagex.exe and specify the/verify parameter.B. Run imagex.exe and specify the /ref parameter.C. Run dism.exe and specify the /get-mountedwiminfo parameter.D. Run dism.exe and specify the /get-imageinfo parameter. Answer: DExplanation:Option: /Get-MountedImageInfoLists the images that are currently mounted and information about the mounted image such as whether the image is valid, read/write permissions, mount location, mounted file path, and mounted image index.Example:Dism /Get-MountedImageInfoOption: /Get-ImageInfo Arguments:/ImageFile:<path_to_image.wim>[/Index:<Image_index> | /Name:<Image_name>]Displays information about the images that are contained in the .wim, .vhd or .vhdx file. When used with the /Index or /Name argument, information about the specified image is displayed. The /Name argument does not apply to VHD files. You must specify /Index:1 for VHD files.Example: Dism /Get-ImageInfo /ImageFile:C:testofflineinstall.wimDism /Get-ImageInfo /ImageFile:C:testimagesmyimage.vhd /Index:1

<http://technet.microsoft.com/en-us/library/hh825224.aspx><http://technet.microsoft.com/en-us/library/hh825258.aspx> QUESTION 124

Your network contains an Active Directory domain named contoso.com. The domain contains a member server that runs Windows Server 2012 R2 and has the Windows Deployment Services (WDS) server role installed. You create a new multicast session in WDS and connect 50 client computers to the session. When you open the Windows Deployment Services console, you discover that all of the computers are listed as pending devices. You need to ensure that any of the computers on the network can join a multicast transmission without requiring administrator approval.What should you configure? To answer, select the appropriate tab in the answer area.



Answer:



Explanation: Note: Pending Devices: Depending on your PXE Response Settings, (WDS server properties), your PXE- booting clients will appear here for approval and/or naming. <http://technet.microsoft.com/en-us/library/cc732360.aspx> QUESTION 125 Your network contains an Active Directory domain named contoso.com. The domain contains two member servers named Server1 and Server2. All servers run Windows Server 2012 R2. Server1 and Server2 are nodes in a Hyper-V cluster named Cluster1. Cluster1 hosts 10 virtual machines. All of the virtual machines run Windows Server 2012 R2 and are members of the domain. You need to ensure that the first time a service named Service1 fails on a virtual machine, the virtual machine is moved to a different node. You configure Service1 to be monitored from Failover Cluster Manager. What should you configure on the virtual machine? A. From the Recovery settings of Service1, set the First failure recovery action to Restart the Service. B. From the General settings, modify the Service status. C. From the Recovery settings of Service1, set the First failure recovery action to Take No Action. D. From the

General settings, modify the Startup type. Answer: C Explanation: Configure the virtual machine to take no action through Hyper-V if the physical computer shuts down by modifying the Automatic Stop Action setting to None. Virtual machine state must be managed through the Failover Clustering feature. <http://technet.microsoft.com/en-us/library/cc742396.aspx>

<http://windowsitpro.com/windows-server-2012/enable-windows-server-2012-failover-cluster-> hyper-v-vmmonitoring QUESTION 126 Your network contains two servers named Server1 and Server2 that run Windows Server 2012 R2. Server1 and Server2 have the Windows Server Update Services server role installed. Server1 synchronizes from Microsoft Update. Server2 is a Windows Server Update Services (WSUS) replica of Server1. You need to configure replica downstream servers to send Server1 summary information about the computer update status. What should you do? A. From Server1, configure Reporting Rollup. B. From Server2, configure Reporting Rollup. C. From Server1, configure Email Notifications. D. From Server2, configure Email Notifications. Answer: A Explanation: WSUS Reporting Rollup Sample Tool This tool uses the WSUS application programming interface (API) to demonstrate centralized monitoring and reporting for WSUS. It creates a single report of update and computer status from the WSUS servers into your WSUS environment. The sample package also contains sample source files to customize or extend the tool functionality of the tool to meet specific needs. The WSUS Reporting Rollup Sample Tool and files are provided as IS. No product support is available for this tool or sample files. For more information read the readme file.

<http://technet.microsoft.com/en-us/windowsserver/bb466192.aspx> QUESTION 127 Drag and Drop Question Your network contains an Active Directory domain named contoso.com. The domain contains two member servers named Server1 and Server2. All servers run Windows Server 2012 R2. You generalize Server2. You install the Windows Deployment Services (WDS) server role on Server1. You need to capture an image of Server2 on Server1. Which three actions should you perform? To answer, move the three appropriate actions from the list of actions to the answer area and arrange them in the correct order.



Answer:




Explanation: Note: * Capture images are Windows Preinstallation Environment (Windows PE) images that allow you to easily capture the install images that you prepare using Sysprep.exe. Instead of using complex command-line tools, once you have run Sysprep.exe on your reference computer, you can boot to the Windows Deployment Services client computer using PXE and select the capture image. When the capture image boots, it starts the Capture Image Wizard, which will guide you through the capture process and optionally upload the new install image to a Windows Deployment Services server. Steps/ create a capture image./ Create an install image./ Add the install image to the Windows Deployment Services server. * A capture image is a boot image that contains Windows PE 2.0, which has been modified to launch an image capture utility instead of setup. The image capture utility copies an image of the computer from the reference computer that has been prepared with Sysprep.exe. The output is an install image that you can add back to the Windows Deployment Services server and then deploy to client computers. Reference: Create an Install, Capture, or Discover Image QUESTION 128 Your network contains an Active Directory domain named adatum.com. Client computers are deployed by using Windows Deployment Services (WDS). From Active Directory Users and Computers on a domain controller named DC1, you attempt to create a new computer account as shown in the exhibit. (Click the Exhibit button.) You need to ensure that you configure computer accounts as managed accounts when you create the computer accounts from Active Directory Users and Computers. What should you do on DC1?



A. Install the User Interfaces and Infrastructure feature. B. From the View menu in Active Directory Users and Computers, select Users, Contacts, Groups, and Computers as containers. C. Install the Windows Deployment Services Tools role administration tool. D. From the View menu in Active Directory Users and Computers, select Advanced Features. Answer: C
Explanation: <http://technet.microsoft.com/en-us/library/cc754469.aspx> QUESTION 129 You have a server named Server1 that runs Windows Server 2012 R2. On Server1, you configure a custom Data Collector Set (DCS) named DCS1. You need to ensure that all performance log data that is older than 30 days is deleted automatically. What should you configure? A. a File Server Resource Manager (FSRM) quota on the %Systemdrive%\PerfLogs folder B. a schedule for DCS1 C. the Data Manager settings of DCS1 D. a File Server Resource Manager (FSRM) file screen on the %Systemdrive%\PerfLogs folder Answer: C
Explanation: A. Would set a quota on the logs folder, wouldnt remove old log data B. Configures when the data set would start and stop collecting data, would not remove old log data C. With Data Management, you can configure how log data, reports, and compressed data are stored for each Data Collector Set. D. File screens allow certain types of files to prohibited from a share

<http://technet.microsoft.com/en-us/library/cc722312.aspx> <http://technet.microsoft.com/en-us/library/cc765998.aspx> [http://technet.microsoft.com/en-us/library/cc772675\(v=ws.10\).aspx](http://technet.microsoft.com/en-us/library/cc772675(v=ws.10).aspx) QUESTION 130 You have a server named Server1 that runs Windows Server 2012 R2. You create a custom Data Collector Set (DCS) named DCS1. You need to configure DCS1 to meet the following requirements: - Automatically run a program when the amount of total free disk space on Server1 drops below 10 percent of capacity. - Log the current values of several registry settings. Which two should you configure in DCS1? (Each correct answer presents part of the solution. Choose two.) A. System configuration information B. A performance counter C. Event trace data D. A Performance Counter Alert Answer: A D
Explanation: Automatically run a program when the amount of total free disk space on Admin1 drops below 10 percent of capacity. You can also configure alerts to start applications and performance logs Log the current values of several registry settings. System configuration information allows you to record the state of, and changes to, registry keys. <http://technet.microsoft.com/en-us/library/cc766404.aspx> Braindump2go is one of the Leading 70-411 Exam Preparation Material Providers Around the World! We Offer 100% Money Back Guarantee on All Products! Feel Free In Downloading Our New Released 70-411 Real Exam Questions!

Administering Windows Server 2012 R2 Exam: 70-411



Product Description Exam Number/Code: 70-411

Exam Number/Code: 70-411

"Administering Windows Server 2012 R2 Exam", also known as 70-411 exam, is a Microsoft Certification. With the complete collection of questions and answers, Braindump2go has assembled to take you through 322 Q&As to your 70-411 Exam preparation. In the 70-411 exam resources, you will cover every field and category in Microsoft MCSA helping to ready you for your successful Microsoft Certification.

Questions and Answers : 322 Q&As

Updated: Sep 14, 2015

~~\$429.99~~ **\$99.99**

[PDF DEMO](#)

[CHECK OUT](#)

Free Demo Download

Braindump2go offers free demo for 70-411 exam (Administering Windows Server 2012 R2 Exam). You can check out the interface, question quality and usability of our practice exams before you decide to buy it.

Printable PDF **Premium VCE + VCE Simulator**

FREE DOWNLOAD: NEW UPDATED 70-411 PDF Dumps & VCE Dumps from Braindump2go:

<http://www.braindump2go.com/70-411.html> (322 Q&As)