

## New Published Microsoft 70-342 Exam Dumps Free Download from Braindump2go! (101-110)

Braindump2go Guarantees Your Microsoft 70-342 Exam 100% Success with Our Unique Official 70-342 Exam Questions Resources! Braindump2go's 70-342 Braindumps are Developed by Experiences IT Certifications Professionals Working in Today's Prospering Companies and Data Centers! Braindump2go 70-342 Exam Dumps are Checked by Our Experts Team every day to ensure you have the Latest Updated Exam Dumps! Vendor: Microsoft Exam Code: 70-342 Exam Name: Microsoft Advanced Solutions of Microsoft Exchange Server 2013 Keywords: 70-342 Exam Dumps, 70-342 Practice Tests, 70-342 Practice Exams, 70-342 Exam Questions, 70-342 PDF, 70-342 VCE Free, 70-342 Book, 70-342 E-Book, 70-342 Study Guide, 70-342 Braindump, 70-342 Prep Guide

Compared Before Buying Microsoft 70-342 PDF & VCE!		
Pass4sure	Braindump2go 100% Pass OR Money Back	Test King
146 Q&As - Practice	155 Q&As - Real Questions	126 Q&As - Practice
\$124.99	\$99.99	971 HKD
No Discount	Coupon Code: <b>BDNT2014</b>	No Discount

QUESTION 101 Hotspot Question Your network contains two Active Directory sites named Site1 and Site2. Both sites contain an equal number of users. Each site contains two Exchange Server 2013 Mailbox servers. You need to recommend a high-availability solution that meets the following requirements:- If a single Mailbox server fails, the active mailbox database copies on that server must fail over to a Mailbox server in the same site.- If both Mailbox servers in the same site fail, the active mailbox databases copies must be switched over to the other site manually.- If a WAN link fails, multiple copies of the same mailbox database must not be activated in both sites simultaneously. How should you configure the database availability groups (DAGs)? (To answer, configure the appropriate options in the answer area.)

Number of DAGs: [One] [Two]

Mailbox servers in the DAGs: [Server from the local site only] [All servers from both sites]

Mailbox database replicas: [Replicas on the servers in the local site of] [Replicas on the servers in both sites]

Datacenter Activation Coordination (DAC) mode: [Enabled] [Disabled]

Answer:

Number of DAGs: [One] [Two]

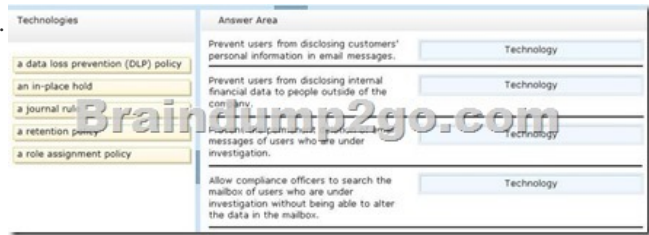
Mailbox servers in the DAGs: [Server from the local site only] [All servers from both sites]

Mailbox database replicas: [Replicas on the servers in the local site of] [Replicas on the servers in both sites]

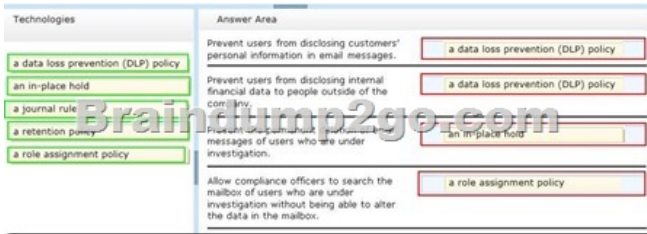
Datacenter Activation Coordination (DAC) mode: [Enabled] [Disabled]

QUESTION 102 Drag and Drop Question Contoso, Ltd., is a bank that has offices in North America and Europe. The company must comply with different regulations for North America and Europe. The company uses Information Right Management (IRM) to protect sensitive documents, such as internal financial reports. You need to recommend a compliance solution to meet the following requirements:- Prevent users from disclosing customers' personal information in email messages. - Prevent users from disclosing internal financial data to people outside of the company. - Prevent the permanent deletion of email messages of users who are under investigation.- Allow compliance officers to search the mailbox of users who are under investigation without being able to alter the data in the mailbox. Which technology should you recommend for each requirement? To answer, drag the appropriate technology to

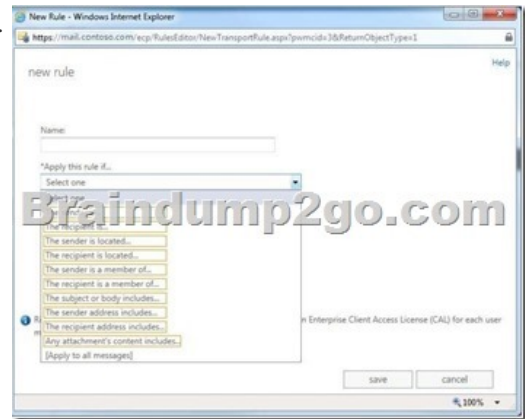
the correct requirement in the answer area. Each technology may be used once, more than once, or not at all. Additionally, you may need to drag the split bar between panes or scroll to view content.



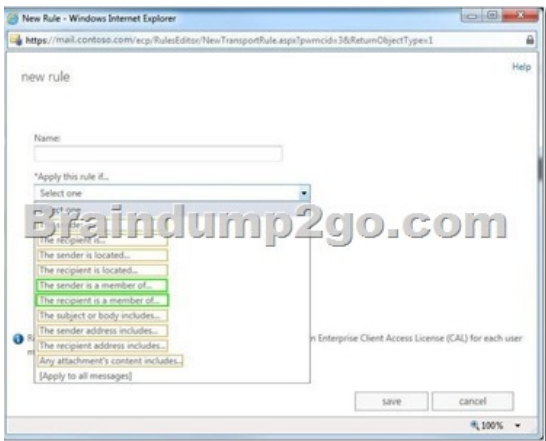
Answer:



QUESTION 103 Hotspot Question You have an Exchange Server 2013 organization. You need to create a single transport rule that prevents users in a group named Group1 from exchanging messages with users in a group named Group2. Which two options should you use? To answer, select the two appropriate options in the answer area.

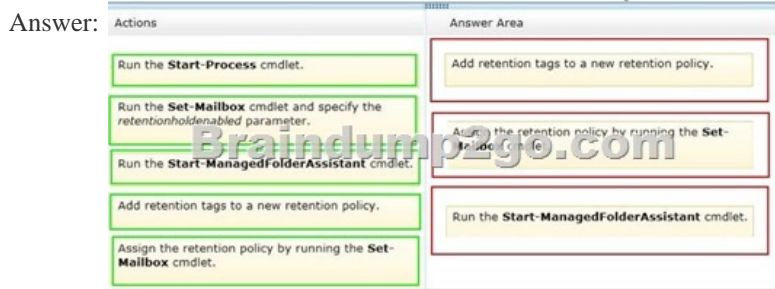


Answer:



Explanation: I believe you should go for minimal administrative effort on this one. Meaning you have to choose for Sender and recipient to be members of... The catch on this one is that the groups need to be mail-enabled groups, and the question doesn't state anywhere these groups are. Bit of an educated guess... QUESTION 104 Drag and Drop Question You have an Exchange Server organization. The organization contains servers that have Exchange Server 2010 and Exchange Server 2013 installed. A new compliance policy requires that all email messages remain stored for two years. You create two retention tags named Tag1 and Tag2. Tag1 moves the email messages to an Archive mailbox after one year. Tag2 permanently deletes the email messages after two years. You need to meet the compliance policy requirements. The solution must ensure that all email messages that are older than

two years are removed as quickly as possible. Which three actions should you perform? To answer, move the three appropriate actions from the list of actions to the answer area and arrange them in the correct order.



QUESTION 105 You have an Exchange Server 2013 organization. You need to ensure that a user named User1 can prevent the deletion of every email message that contains a specific word from all of the mailboxes. The solution must minimize the number of permissions assigned to User1. What should you do? A. Add User1 to the Records Management management role group. Instruct User1 to run the New-ManagedContentSettings cmdlet. B. Add User1 to the Records Management management role group. Instruct User1 to run the New-MailboxSearch cmdlet. C. Add User1 to the Discovery Management management role group. Instruct User1 to run the New-ManagedContentSettings cmdlet. D. Add User1 to the Discovery Management management role group. Instruct User1 to run the New-MailboxSearch cmdlet. Answer: D Explanation: \* If you want users to be able to use Microsoft Exchange Server 2013 In-Place eDiscovery, you must first authorize them by adding them to the Discovery Management role group. Members of the Discovery Management role group have Full Access mailbox permissions for the Discovery mailbox that's created by Exchange Setup. \* The New-MailboxSearch cmdlet creates an In-Place eDiscovery search or an In-Place Hold. Unless specified, mailboxes on all Exchange 2013 servers in an organization are searched. You can stop, start, modify, or remove the search.

[http://technet.microsoft.com/en-us/library/dd351080\(v=exchg.150\).aspx](http://technet.microsoft.com/en-us/library/dd351080(v=exchg.150).aspx)

[http://technet.microsoft.com/en-us/library/dd298064\(v=exchg.150\).aspx](http://technet.microsoft.com/en-us/library/dd298064(v=exchg.150).aspx) QUESTION 106 Your company has an Exchange Server 2013 organization named Contoso. A partner company has an Exchange Server 2013 organization named Fabrikam. Neither company has any trusts between their forests. Users from both organizations access their mailbox from the Internet by using Outlook Anywhere. You need to ensure that the users from both organizations can share free/busy information. Which two cmdlets should you run? (Each correct answer presents part of the solution. Choose two.) A. New-AcceptedDomain B. Add-AvailabilityAddressSpace C. Set-AvailabilityConfig D. New-SharingPolicy E. Add-ADPermission Answer: B Explanation: B: Use the

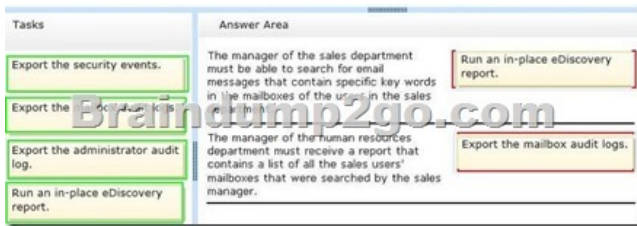
Add-AvailabilityAddressSpace cmdlet to define the access method and associated credentials used to exchange free/busy data across forests. D: Use the New-SharingPolicy cmdlet to create a sharing policy to regulate how users inside your organization can share calendar and contact information with users outside the organization. Users can only share this information after federation has been configured in Exchange. <http://technet.microsoft.com/en-us/library/bb124122%28v=exchg.150%29.aspx>

<http://technet.microsoft.com/en-us/library/dd298186%28v=exchg.150%29.aspx> QUESTION 107 A company named Contoso, Ltd., has an Exchange Server 2013 organization. The primary SMTP suffix for all users is contoso.com. A company named Fabrikam, Inc., has an Exchange Server 2010 organization. The primary SMTP suffix for all users is fabrikam.com. The users in both organizations access their email by using Microsoft Outlook 2010 and Outlook Anywhere. All of the users work from domain-joined client computers that connect to the internal network. Contoso acquires Fabrikam. You establish a cross-forest trust between the Contoso forest and the Fabrikam forest. In fabrikam.com, you create a user named User1. In contoso.com, you create a linked mailbox for User1 and you set the primary SMTP address to User1@fabrikam.com. User1 reports that Outlook 2010 fails to configure his mail profile automatically. User1 can manually configure his profile and connect to his mailbox. You need to ensure that users in fabrikam.com can find their mailboxes automatically. What should you do in contoso.com? A. Create a DNS record

named autodiscover.fabrikam.com. Point the record to the virtual IP address of the Client Access servers.B. Modify the ExternalURL of the Autodiscover virtual directory on the Exchange Servers 2013 servers.C. Modify the Autodiscover Service Connection Point (SCP).D. Run the Export-AutoDiscoverConfig cmdlet on an Exchange Server 2013 server. Answer: D  
Explanation: You can configure Microsoft Exchange services, such as the Availability service, for the Autodiscover service on a Microsoft Exchange Server 2010 Client Access server. When you enable Outlook Anywhere, you must also configure external client access to Microsoft Exchange services for the Autodiscover service. Other external URLs you must configure include the URLs for the Availability service, Exchange Web Services, Unified Messaging (UM), and the offline address book. QUESTION 108 You have an Exchange Server 2013 organization that contains 10 servers. You have a federation trust to the Microsoft Federation Gateway. The certificate in the trust relationship expires soon. You need to replace the certificate. The solution must minimize downtime. You purchase a new certificate. What should you do next? A. On all of the Exchange servers, import the certificate, and then run the New-FederationTrust cmdlet. B. On all of the Exchange servers, import the certificate, and then run the Set-OrganizationRelationship cmdlet. C. On one of the Exchange servers, import the certificate, and then run the Set-FederationTrust cmdlet. D. On one of the Exchange servers, import the certificate, and then run the Set-FederatedOrganizationIdentifier cmdlet. Answer: C  
Explanation: You can use the Set-FederationTrust cmdlet to manage the certificates used for the federation trust. You can also use the Set-FederationTrust cmdlet to refresh the metadata document from the Microsoft Federation Gateway and download its certificate. <http://technet.microsoft.com/en-us/library/dd876922%28v=exchg.141%29.aspx> QUESTION 109 Drag and Drop Question You work for a financial services company that has an Exchange Server 2013 organization. Mailbox audit logging is enabled for all mailboxes. The company identifies the following requirements for the sales department:- The manager of the sales department must be able to search for email messages that contain specific key words in the mailboxes of the users in the sales department.- The manager of the human resources department must receive a report that contains a list of all the sales users' mailboxes that were searched by the sales manager. You need to identify which tasks must be performed to meet the requirements. Which tasks should you identify? To answer, drag the appropriate task to the correct requirement in the answer area. Each task may be used once, more than once, or not at all. Additionally, you may need to drag the split bar between panes or scroll to view content.



Answer:



QUESTION 110 You have an Exchange Server 2013 organization that contains one office in Los Angeles and one office in New York. All servers have the Mailbox server role and the Client Access server role installed and are members of a data availability group (DAG) named DAG1. The servers and databases are shown in the exhibit. (Click the Exhibit button.)



You need to ensure that if the active copy of LADB01 fails, a server in the same site will attempt to activate a copy of the database before a server in another site does. The solution must not influence the activation of other database copies. Which command should you run? A. Set-databaseavailabilitygroupserver -identity dagl-alternatewitnessserverfs2 B. Set-mailboxserver-identity ex6

autodatabasemountdial bestavailabilityC. Suspend-mailboxdatabasecopy-identity Iadb01ex6 -activationonlyD.  
Set-mailboxdatabasecopy -identity Iadb01ex2-activationpreferencel Answer: DExplanation: Use the Set-MailboxDatabaseCopy cmdlet to configure the properties of a database copy.With this cmdlet, you can configure the replay lag time, truncation lag time, and activation preference value for a mailbox database copy./ activationpreferenceThe ActivationPreference parameter value is used as part of Active Manager's best copy selection process and to redistribute active mailbox databases throughout the database availability group (DAG) when using the RedistributeActiveDatabases.ps1 script. The value for the ActivationPreference parameter is a number equal to or greater than 1, where 1 is at the top of the preference order. The position number can't be larger than the number of database copies of the mailbox database.Incorrect:Not C: Use the Suspend-MailboxDatabaseCopy cmdlet to block replication and replay activities (log copying and replay) or activation for a database configured with two or more database copies./ IdentityThe Identity parameter specifies the name of the database copy being suspended./ ActivationOnlyThe ActivationOnly switch specifies whether to suspend only activation for the mailbox database copy. Braindump2go Offers 100% money back guarantee on all products! Our products remain valid for a lifetime! Recently we update our 70-342 Exam Questions since the Microsoft Official Exam Center adds some new questions in 70-342 Exam Dumps. Braindump2go checks all Exam Dumps every day and guarantee all the exam questions are the latest and correct!

<b>Compared Before Buying Microsoft 70-342 PDF &amp; VCE!</b>		
<b>Pass4sure</b>	<b>Braindump2go</b> <b>100% Pass OR Money Back</b>	<b>Test King</b>
146 Q&As - Practice	155 Q&As – Real Questions	126 Q&As - Practice
\$124.99	\$99.99	971 HKD
No Discount	Coupon Code: <b>BDNT2014</b>	No Discount

<http://www.braindump2go.com/70-342.html>