


[NEW EXAM RELEASED] New Released Microsoft 70-696 Dumps PDF&VCE Free Download from Braindump2go

MICROSOFT NEWS: 70-696 Exam Questions has been Updated Today! Get Latest 70-696 VCE and 70-696 PDF Instantly!

Welcome to Download the Newest Braindump2go 70-696 VCE&70-696 PDF Dumps:

<http://www.braindump2go.com/70-696.html> (90 Q&As) Exam Code: 70-696 Exam Name: Managing Enterprise Devices and Apps Certification Provider: Microsoft 70-696 Dumps, 70-696 Exam Questions, 70-696 PDF, 70-696 VCE, 70-696 Practice Exams, 70-696 Practice Tests, 70-696 Study Guide, 70-696 Braindumps, 70-696 Book, 70-696 eBook, 70-696 Managing Enterprise Devices and Apps

Managing Enterprise Devices and Apps: 70-696



Product Description Exam Number/Code: 70-696

Exam Number/Code: 70-696

Managing Enterprise Devices and Apps, also known as 70-696 exam, is a Microsoft Certification. With the complete collection of questions and answers, Braindump2go has assembled to take you through 90 Q&As to your 70-696 Exam preparation. In the 70-696 exam resources, you will cover every field and category in Microsoft MCITP helping to ready you for your successful Microsoft Certification.

Questions and Answers : 90 Q&As
 Updated: Jan 22, 2016
 \$429.99 **\$99.99**

[PDF DEMO](#)

[CHECK OUT](#)

Printable PDF **Premium VCE + VCE Simulator**

Braindump2go offers free demo for 70-696 exam (Managing Enterprise Devices and Apps). You can check out the interface, question quality and usability of our practice exams before you decide to buy it.

Case Study 1 - Proseware, Inc. (QUESTION 1 - QUESTION 8) Case Study 2 - Litware, Inc. (QUESTION 9 - QUESTION 22) Case Study 3 - Contoso, Ltd. (QUESTION 23 - QUESTION 29) Case Study 4 - Fabrikam, Inc. (QUESTION 30 - QUESTION 42)

Overview
 General Overview Proseware, Inc. is an international manufacturing company that has 3,000 employees. The company has a sales department a marketing department, a research department and a human resources department. Physical Locations Proseware has two main offices and five branch offices. The main offices are located in New York City and London. The branch offices are located in Singapore, Sydney, Auckland, Montreal, and Tokyo. Users from each department are located in each office. All of the offices connect to each other by using a WAN link. Each office also has a direct connection to the Internet. Existing Environment Active Directory The network contains one Active Directory forest named proseware.com. The forest contains a single domain. All servers in the domain run Windows Server 2012 R2. Each office contains a single domain controller. Each domain controller is configured as a DHCP server and a DNS server. Each office is configured as an Active Directory site. There is an organizational unit (OU) for each department. All client computers are configured to use the DNS server in their respective office only. Network Infrastructure The client computers in all of the offices are managed by using Microsoft System Center 2012 R2 Configuration Manager. A collection exists for each department. There is a distribution point in each main office. Proseware is evaluating Windows Intune for the management of personal devices. Currently, Windows Intune is not integrated with Configuration Manager. The New York City office has the following servers and client computers: QUESTION 1 Hotspot Question You have a Windows Intune subscription. You have 20 client computers that run Windows 8.1 and have the Windows Intune client installed. The computers run an application named App1. You create two automatic approval rules. The rules are configured as shown in the following table.



You upload an update for App1 named App1_Update1 to Windows Intune and an update named KB2929961 is made available in Windows Intune. The settings of the updates are configured as shown in the following table.

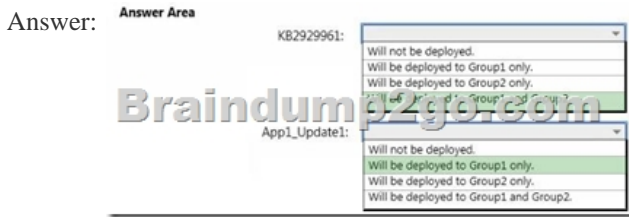
Update name	Classification	Applies to
KB2929961	Security updates	Windows 8.1

You need to identify which groups will receive the updates. Which groups should you identify? To answer, select the appropriate group for each update in the answer area.

Answer Area

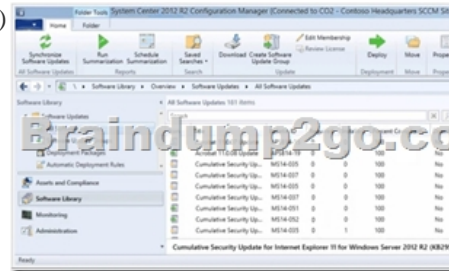
KB2929961:

 App1_Update1:

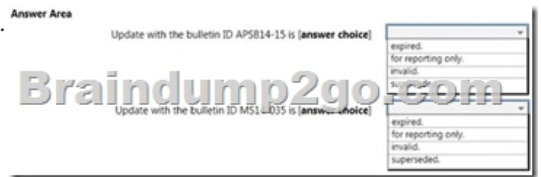


QUESTION 2 You have a Microsoft System Center 2012 R2 Configuration Manager primary site that is integrated with System Center Updates Publisher 2011. You need to deploy third-party updates to users by using Configuration Manager. You must ensure that the update binary files are downloaded only to Update Publisher if a Configuration Manager client requests the update. What should you do from Update Publisher? A. Create a rule. B. Create a publication. C. Run the Add Software Update Catalog wizard. D. Modify the Trusted Publishers options. Answer: C

QUESTION 3 Hotspot Question You open the Microsoft System Center 2012 R2 Configuration Manager console as shown in the exhibit. (Click the Exhibit button.)



Use the drop-down menus to select the answer choice that completes each statement.



QUESTION 4 You have a deployment of Microsoft System Center 2012 R2 Configuration Manager. All client computers have the Configuration Manager client installed. You have two collections. One collection contains all of the client computers that connect to the network remotely by using a VPN connection. The other collection contains all of the servers. You have a server named WSUS1 that has the Windows Server Update Services (WSUS) server role installed. WSUS1 and Configuration Manager are integrated. You need to deploy update types to meet the following requirements: - VPN clients require all update types except definition updates. - Servers require all update types except update rollups. - Updates must be installed without user intervention. - Administrative effort must be minimized. What should you create? A. two configuration baselines B. two distribution points C. two automatic deployment rules D. two software update points Answer: C

QUESTION 5 You have a deployment of Microsoft System Center 2012 R2 Configuration Manager and System Center Updates Publisher 2011. You plan to deploy updates to Adobe Reader version 11. You need to ensure that the metadata for the Adobe Reader updates is downloaded locally to the Updates Publisher server. Which two actions should you perform? Each correct answer presents part of the solution. A. Create a new publication. B. Run the Add Software Update Catalog wizard. C. Modify the Update Server options. D. Add a catalog. E. Create a rule. F. Modify the Trusted Publishers options. Answer: AB

QUESTION 6 Your network contains one Active Directory domain. The domain contains a deployment of Microsoft System Center 2012 R2 Configuration Manager. You need to update the Configuration Manager catalog from the information in System Center Online. Which site system role should you add? A. Application Catalog web service point B. Asset intelligence synchronization point C. Application Catalog website point D. Windows Intune connector Answer: B

Explanation: <https://technet.microsoft.com/en-gb/library/gg681998.aspx>

QUESTION 7 Hotspot Question You have a deployment of Microsoft System Center 2012 R2 Configuration Manager. All client computers have the Configuration Manager client installed.

You deploy two applications named App1 and App2. App1 is a large application that is used infrequently. Some users receive notifications indicating low disk space on their client computer. You need to uninstall App1 from any client computer that has both App1 and App2 installed and that has less than 1GB of free disk space. What should you do? To answer, select the appropriate options in the answer area.

Answer Area

Identify computers by:

- Creating a configuration item.
- Creating a software category.
- Creating a software metering rule.
- Creating a software collection that uses a query rule.
- Creating a software collection that uses a file path.

Remediation plan:

- Retire App1.
- Create a deployment for App1.
- Create an automatic deployment rule.
- Create and deploy an App-V package for App1.

Answer: Answer Area

Identify computers by:

- Creating a configuration item.
- Creating a software category.
- Creating a software metering rule.
- Creating a software collection that uses a query rule.
- Creating a software collection that uses a file path.

Remediation plan:

- Retire App1.
- Create a deployment for App1.
- Create an automatic deployment rule.
- Create and deploy an App-V package for App1.

Explanation: <https://technet.microsoft.com/en-gb/library/gg682013.aspx> QUESTION 8 You have a deployment of Microsoft System Center 2012 R2 Configuration Manager that was migrated from Configuration Manager 2007 R2. You have a Windows Installer (MSI) package for an application named App1. App1 is deployed to several client computers by using Configuration Manager 2007 R2. You plan to create a configuration item to modify a registry entry that was created during the installation of App1. You need to identify which detection method must be used for the configuration item. What is the best detection method to identify? More than one answer choice may achieve the goal. Select the BEST answer. A. Use Windows Installer detection. B. Always assume application is installed. C. Use a custom script to detect this application. D. Detect a specific application and deployment type.

Answer: A QUESTION 9 You deploy the Endpoint Protection client in Microsoft System Center 2012 R2 Configuration Manager to all client computers. You plan to deploy an antimalware policy to the users in the research department. You need to ensure that the research department users can exclude some processes from the Endpoint Protection client manually. Which settings should you modify in the antimalware policy? A. real-time protection B. default actions C. threat overrides D. advanced Answer: D

Explanation: <http://gerryhampsoncm.blogspot.co.uk/2013/08/config-mgr-2012-endpoint-protection.html> QUESTION 10 Drag and Drop Question You have a deployment of Microsoft System Center 2012 R2 Configuration Manager. All client computers are configured as Configuration Manager clients. You need to remediate automatically the client computers that are missing a specific registry key. Which three actions should you perform in sequence? To answer, move the appropriate actions from the list of actions to the answer area and arrange them in the correct order.

Actions

- Schedule a summarization.
- Create a configuration item.
- Create a baseline.
- Deploy a baseline.

Answer Area

Answer: Actions

- Schedule a summarization.

Answer Area

- Create a configuration item.
- Create a baseline.

Explanation: <https://technet.microsoft.com/en-gb/library/gg682153.aspx> FREE DOWNLOAD: NEW UPDATED 70-696 PDF Dumps & 70-696 VCE Dumps from Braindump2go: <http://www.braindump2go.com/70-696.html> (90 Q&As)

Managing Enterprise Devices and Apps: 70-696



Product Description Exam Number/Code: 70-696

Exam Number/Code: 70-696

Managing Enterprise Devices and Apps, also known as 70-696 exam, is a Microsoft Certification. With the complete collection of questions and answers, Braindump2go has assembled to take you through 90 Q&As to your 70-696 Exam preparation. In the 70-696 exam resources, you will cover every field and category in Microsoft MCITP helping to ready you for your successful Microsoft Certification.

Questions and Answers : 90
Q&As

Updated: Jan 22, 2016

~~\$129.99~~ **\$99.99**

[PDF DEMO](#)

[CHECK OUT](#)

Free Demo Download

Braindump2go offers free demo for 70-696 exam (Managing Enterprise Devices and Apps). You can check out the interface, question quality and usability of our practice exams before you decide to buy it.

Printable PDF **Premium VCE + VCE Simulator**