

New Exam Dumps Released: Microsoft 70-467 Dumps Shared by Braindump2go for Free Download!(101-110)

The Microsoft 70-467 Practice Exam is a very hard exam to successfully pass your exam. Here you will find Free Braindump2go Microsoft Practice Sample Exam Test Questions that will help you prepare in passing the 70-467 exam. Braindump2go Guarantees you 100% PASS exam 70-467 Vendor: Microsoft Exam Code: 70-467 Exam Name: Designing Business Intelligence Solutions with Microsoft SQL Server 2012 Exam

Compared Before Buying Microsoft 70-467 PDF & VCE!		
Pass4sure	Braindump2go	TestKing
	100% Pass OR Money Back	
Not In Stock	189 Q&As	50 Q&As
/	\$99.99	\$124.99
/	Coupon Code: BDNT2014	/

QUESTION 101 You are creating the Australian states query. Which Multidimensional Expressions (MDX) calculation should you use to complete the query? To answer, drag the appropriate calculation to the answer area.

```

SUM(
    TOPCOUNT(DESCENDANTS([Customer].[Geography].CURRENTMEMBER,
        [Customer].[Geography].[City]), 10,
        [Measures].[Sales Amount]),
        [Measures].[Sales Amount])
/
((Customer).[Geography].CURRENTMEMBER, [Measures].[Sales Amount])

SUM(
    TOPCOUNT(DESCENDANTS([Customer].[Geography].CURRENTMEMBER,
        [Customer].[Geography].[Customer]), 10,
        [Measures].[Sales Amount]),
        [Measures].[Sales Amount])
/
((Customer).[Geography].CURRENTMEMBER, [Measures].[Sales Amount])

SUM(
    GENERATE(DESCENDANTS([Customer].[Geography].CURRENTMEMBER,
        [Customer].[Geography].[City]),
        TOPCOUNT(DESCENDANTS([Customer].[Geography].CURRENTMEMBER,
            [Customer].[Geography].[Customer]), 10,
            [Measures].[Sales Amount])),
        [Measures].[Sales Amount])
/
((Customer).[Geography].CURRENTMEMBER, [Measures].[Sales Amount])

SUM(
    GENERATE(DESCENDANTS([Customer].[Geography].CURRENTMEMBER,
        [Customer].[Geography].[City]),
        TOPCOUNT(DESCENDANTS([Customer].[Geography].CURRENTMEMBER,
            [Customer].[Geography].[City]), 10,
            [Measures].[Sales Amount])),
        [Measures].[Sales Amount])
/
((Customer).[Geography].CURRENTMEMBER, [Measures].[Sales Amount])
    
```

WITH MEMBER [Measures].[State Sales Density By Top 10 Customers Per City] AS

```

SELECT
    {[Measures].[State Sales Density By Top 10 Customers Per City]}
    ON COLUMNS,
    [Customer].[Geography].[Australia].CHILDREN ON ROWS
FROM
    [Sales]
WHERE
    ([Date].[Fiscal].[FY2012])
    
```

Answer:

```

SUM(
    TOPCOUNT(DESCENDANTS([Customer].[Geography].CURRENTMEMBER,
    [Customer].[Geography].[City]), 10,
    [Measures].[Sales Amount]),
    [Measures].[Sales Amount])
/
([Customer].[Geography].CURRENTMEMBER, [Measures].[Sales Amount])

SUM(
    TOPCOUNT(DESCENDANTS([Customer].[Geography].CURRENTMEMBER,
    [Customer].[Geography].[Customer]), 10,
    [Measures].[Sales Amount]),
    [Measures].[Sales Amount])
/
([Customer].[Geography].CURRENTMEMBER, [Measures].[Sales Amount])

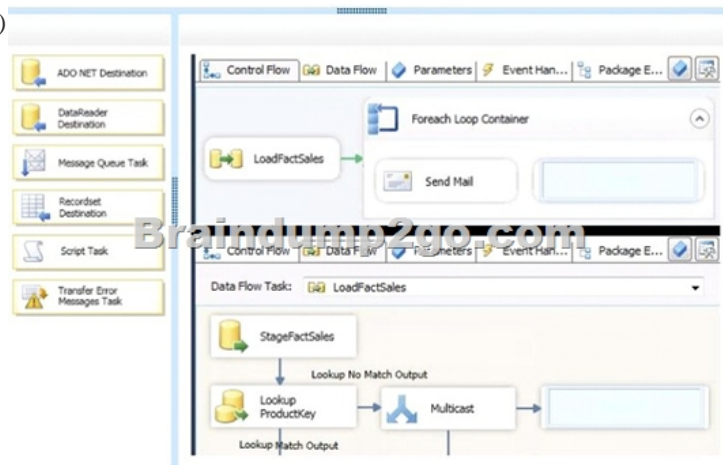
SUM(
    GENERATE(DESCENDANTS([Customer].[Geography].CURRENTMEMBER,
    [Customer].[Geography].[City]),
    TOPCOUNT(DESCENDANTS([Customer].[Geography].CURRENTMEMBER,
    [Customer].[Geography].[Customer]), 10,
    [Measures].[Sales Amount])),
    [Measures].[Sales Amount])
/
([Customer].[Geography].CURRENTMEMBER, [Measures].[Sales Amount])

SUM(
    GENERATE(DESCENDANTS([Customer].[Geography].CURRENTMEMBER,
    [Customer].[Geography].[City]),
    TOPCOUNT(DESCENDANTS([Customer].[Geography].CURRENTMEMBER,
    [Customer].[Geography].[City]), 10,
    [Measures].[Sales Amount])),
    [Measures].[Sales Amount])
/
([Customer].[Geography].CURRENTMEMBER, [Measures].[Sales Amount])

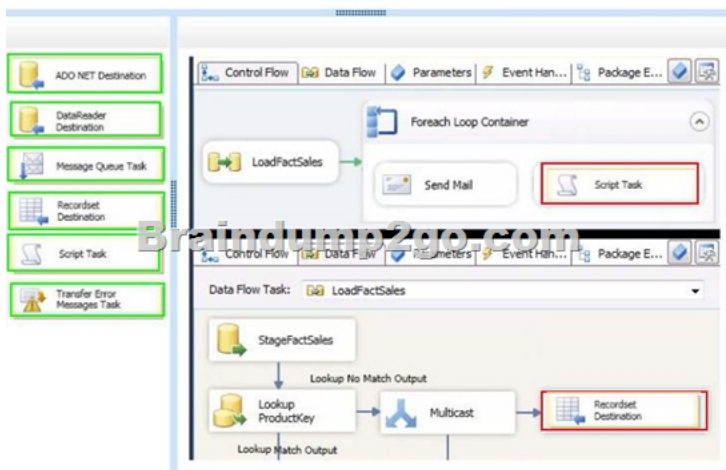
WITH MEMBER [Measures].[State Sales Density By Top 10 Customers Per City]
AS
SUM(
    GENERATE(DESCENDANTS([Customer].[Geography].CURRENTMEMBER,
    [Customer].[Geography].[City]),
    TOPCOUNT(DESCENDANTS([Customer].[Geography].CURRENTMEMBER,
    [Customer].[Geography].[Customer]), 10,
    [Measures].[Sales Amount])),
    [Measures].[Sales Amount])
/
([Customer].[Geography].CURRENTMEMBER, [Measures].[Sales Amount])

SELECT
[[Measures].[State Sales Density By Top 10 Customers Per City]]
ON COLUMNS,
[Customer].[Geography].[Australia].CHILDREN ON ROWS
FROM
[Sales]
WHERE
([Date].[Fiscal].[FY2012])
    
```

QUESTION 102 You need to develop the LoadFactSales package to write the error messages to the SSIS catalog log. Which components should you use? To answer, drag the appropriate components to the correct location or locations in the answer area. (Use only components that apply.)

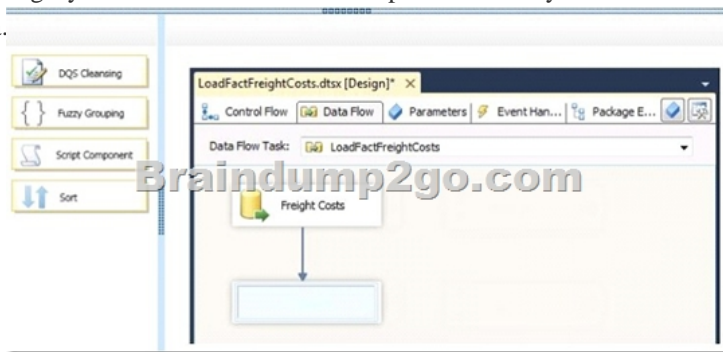


Answer:

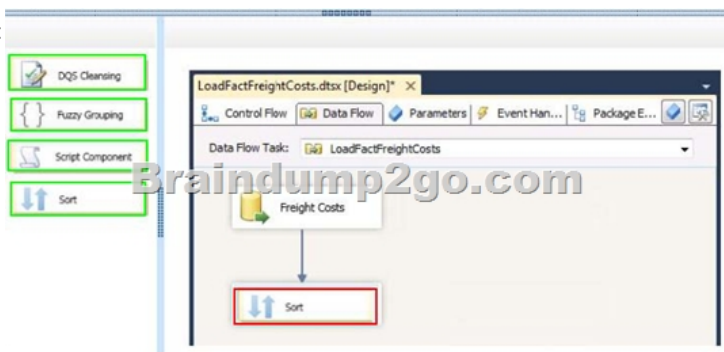


QUESTION 103 You need to ensure that the corporate logos appear in reports. What should you do? A. In SharePoint Central Administration, configure the unattended execution account. B. In SharePoint Central Administration, configure the Report Server service account. C. In Reporting Services Configuration Manager, configure the unattended execution account. D. In Reporting Services Configuration Manager, configure the Report Server service account. Answer: A

QUESTION 104 You need to configure the LoadFactFreightCosts package to address the data integrity issues. Which data flow component should you use? To answer, drag the appropriate data flow component to the answer area.



Answer:



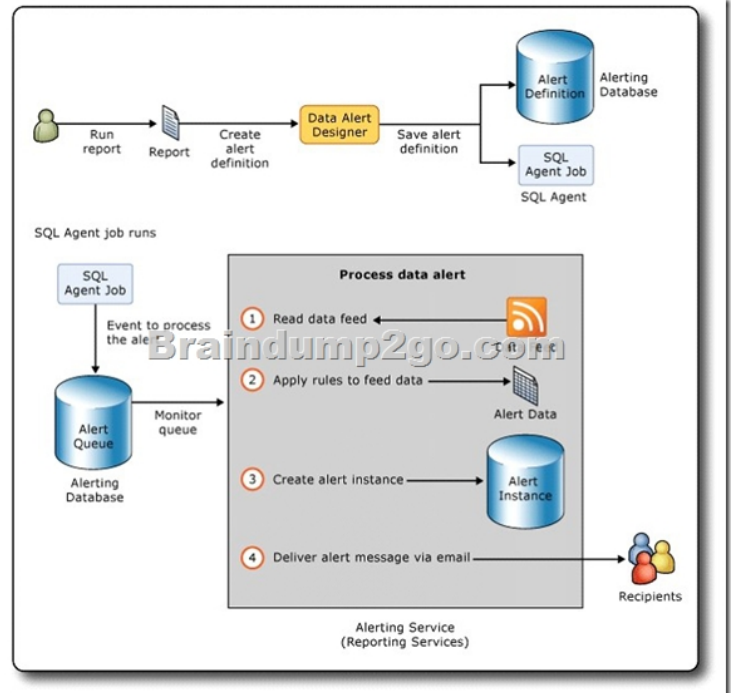
QUESTION 105 You need to ensure that queries to the Sales Analysis cube default to the correct time period. Where should you set the default member Multidimensional Expressions (MDX) expression? A. In the DefaultMember property of the Month attribute of the Date dimension. B. In the cube's calculation script. C. In the DefaultMeasure property of the cube. D. In the Analysts role. Answer: B

QUESTION 106 You need to ensure that the Sales measure in the Power View field list meets the requirements. What should you do? (Each correct answer presents a part of the solution. Choose all that apply.) A. Format the column to display zero decimal places. B. Hide the column from client tools. C. Create a measure named Sales based on the column by using the Data Analysis Expressions (DAX) SUM() function. D. Rename the column to Sales. E. Format the measure to display zero decimal places. Answer: ACE

Explanation:- Data Analysis Expressions (DAX) provides many functions for creating aggregations such as sums, counts, and averages. These functions are very similar to aggregation functions used by Microsoft Excel.- SUMX Function Returns the sum of an expression evaluated for each row in a table.

QUESTION 107 You need to identify the reasons that data alert

notifications are not being sent. Which of the following reasons are possible? (Each correct answer presents a complete solution. Choose all that apply.)
 A. The shared schedule is paused.
 B. The data source used by the report is disabled.
 C. The SSRS service is not running.
 D. The report data has not changed since the previous notification.
 E. The SQL Server Agent is not running.
 F. The SSRS encryption key has been deleted.
 Answer: CE
 Explanation:



Workflow in Reporting Services alerting
 One possibility is that no SQL Server Agent alerts have been configured. This is a free, easy way to get notified of corruption, job failures, or major outages even before monitoring systems pick it up.
 QUESTION 108
 You need to develop the tabular project to support the date analysis requirements. What should you do?
 A. Create one date table named Date. Create an active relationship between the DateKey column of the Date table and the OrderDateKey column of the Sales table. Create an inactive relationship between the DateKey column of the Date table and the ShipDateKey column of the Sales table.
 B. Create two date tables, one named Order Date and one named Ship Date. Create an active relationship between the DateKey column of the Order Date table and the OrderDateKey column of the Sales table. Create an inactive relationship between the DateKey column of the Ship Date table and the ShipDateKey column of the Sales table.
 C. Create one date table named Date. Create an active relationship between the DateKey column of the Date table and the ShipDateKey column of the Sales table. Create an inactive relationship between the DateKey column of the Date table and the OrderDateKey column of the Sales table.
 D. Create two date tables, one named Order Date and one named Ship Date. Create an active relationship between the DateKey column of the Order Date table and the OrderDateKey column of the Sales table. Create an active relationship between the DateKey column of the Ship Date table and the ShipDateKey column of the Sales table.
 Answer: C
 QUESTION 109
 You are creating the Australian postal code query. Which arguments should you use to complete the query? To answer, drag the appropriate arguments to the correct location or locations in the answer area. (Use only arguments that apply.)

Arguments	Answer area
AFTER	<pre> SELECT [[Measures].[Sales Amount]] ON COLUMNS, ORDER(DESCENDANTS([Customer].[Geography].[Australia], [Customer].[Geography].[Post Code]), [Measures].[Sales Amount]) ON ROWS FROM [Sales] WHERE ([Date].[Fiscal].[FY2012]) </pre>
ASC	
BASC	
BDESC	
BEFORE	
DESC	
LEAVES	
SELF	

Answer:

QUESTION 110 You need to update the Execute SQL task in the OnVariableValueChanged event handler of all SSIS packages. Which additional variable should be logged? A. System::ExecutionInstanceGUIDB. System::ServerExecutionIDC. System::VariableIDD. System::SourceID Answer: C Braindump2go 70-467 Latest Updaed Braindumps Including All New Added 70-467 Exam Questions from Exam Center which Guarantees You Can 100% Success 70-467 Exam in Your First Try Exam!

Compared Before Buying Microsoft 70-467 PDF & VCE!		
Pass4sure	Braindump2go 100% Pass OR Money Back	TestKing
Not In Stock	189 Q&As	50 Q&As
/	\$99.99	\$124.99
/	Coupon Code: BDNT2014	/

<http://www.braindump2go.com/70-467.html>