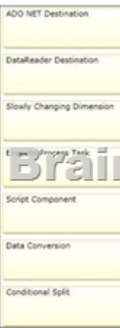
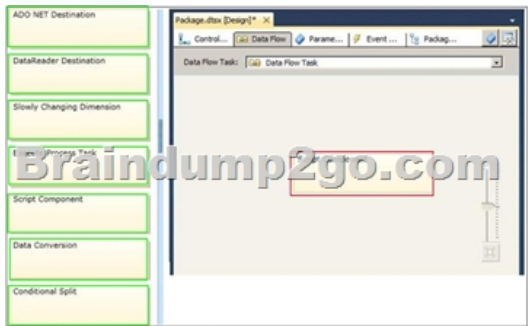


## [New-70-767-DumpsExam Pass 100%!Braindump2go 70-767 Exam VCE and PDF Dumps 247Q Instant Download[61-70

2017 Aug New Microsoft 70-767 Exam Dumps with PDF and VCE Free Updated in [www.Braindump2go.com](http://www.Braindump2go.com) Today!100% 70-767 Real Exam Questions! 100% 70-767 Exam Pass Guaranteed! 1.|2017 New 70-767 Exam Dumps(PDF & VCE) 247Q&As Download:<https://www.braindump2go.com/70-767.html> 2.|2017 New 70-767 Exam Questions & Answers Download: <https://drive.google.com/drive/folders/0B75b5xYLjSSNN1RSdIN6Z0VwRjg?usp=sharing> QUESTION 61You are developing a SQL Server Integration Services (SSIS) package that imports data into a data warehouse hosted on SQL Azure. The package uses a Foreach container to process text files found in a folder. The package must be deployed to a single server by using the Project Deployment model. Multiple SQL Server Agent jobs call the package. Each job is executed on a different schedule. Each job passes a different folder path to the package. You need to configure the package to accept the folder path from each job. Which package configuration should you use? A. Parent Package VariableB. XML Configuration FileC. Environment VariableD. .dtsConfig fileE. Registry Entry Answer: C QUESTION 62Drag and Drop QuestionYou are developing a SQL Server Integration Services (SSIS) package. The package uses custom functionality that accesses a SQL Server database. The custom functionality must be implemented by using Language Integrated Query (LINQ). You need to ensure that the LINQ code can be debugged at design time. What should you select from the SSIS Toolbox? (To answer, drag the appropriate item to the correct location in the answer area.)



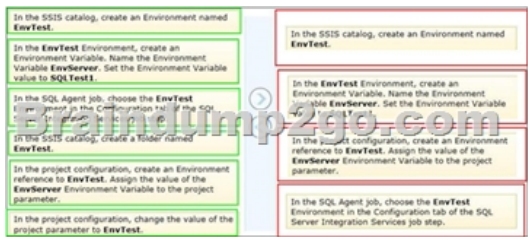
Answer:



QUESTION 63Drag and Drop QuestionsYou are developing a SQL Server Integration Services (SSIS) project by using the Project Deployment model. The project contains many packages. It is deployed on a server named SQLTest1. The project will be deployed to several servers that run SQL Server 2012. The project accepts one required parameter. The data type of the parameter is a string. A SQL Agent job is created that will call the Loading.dtsx package in the project. A job step is created for the SSIS package. The job must pass the value of an SSIS Environment Variable to the project parameter. The value of the Environment Variable must be configured differently on each server that runs SQL Server. The value of the Environment Variable must provide the server name to the project parameter. You need to configure SSIS on the SQLTest1 server to pass the Environment Variable to the package. Which four actions should you perform in sequence by using SQL Server Management Studio? (To answer, move the appropriate actions from the list of actions to the answer area and arrange them in the correct order.)



Answer:



QUESTION 64 You are creating a SQL Server Integration Services (SSIS) package that implements a Type 3 Slowly Changing Dimension (SCD). You need to add a task or component to the package that allows you to implement the SCD logic. What should you use? A. a Data Conversion component B. an Execute SQL task that executes a MERGE statement on the database C. a Merge component D. an Expression task  
Answer: C  
Explanation: Note: Type of Slowly Changing Dimensions Slowly Changing Dimensions are categorized into three types named: Type 1, Type 2, and Type 3. The Type 1 SCD does not maintain the history of changing attributes, it overwrites values of the attributes. Type 2 maintains historical values for changing attributes. Type 3 that we do not use much maintains separate columns for changed attributes. SSIS SCD wizard supports both Type 1 and Type 2. Using MERGE instead of SCD wizard Replacement of SCD wizard with MERGE is not a straightforward technique. If the SCD has both Type 1 and Type 2 types attributes, they need to be handled separately.  
QUESTION 65 You are developing a SQL Server Integration Services (SSIS) package to load data into a SQL Server table on Server A. The package includes a data flow and is executed on Server B. The destination table has its own identity column. The destination data load has the following requirements:- The identity values from the source table must be used. - Default constraints on the destination table must be ignored. - Batch size must be 100,000 rows. You need to add a destination and configure it to meet the requirements. Which destination should you use? A. OLE DB Destination with Fast Load B. SQL Server Destination C. ADO NET Destination without Bulk Insert D. ADO NET Destination with Bulk Insert E. OLE DB Destination without Fast Load  
Answer: A  
Explanation:

<http://msdn.microsoft.com/en-us/library/ms141237.aspx> <http://msdn.microsoft.com/en-us/library/ms139821.aspx>

<http://msdn.microsoft.com/en-us/library/ms141095.aspx>  
QUESTION 66 You are developing a SQL Server Integration Services (SSIS) package that imports data into a data warehouse. You add an Execute SQL task to the control flow. The task must execute a simple INSERT statement. The task has the following requirements:- The INSERT statement must use the value of a string package variable. - The variable name is StringVar. - The Execute SQL task must use an OLE DB Connection Manager. In the Parameter Mapping tab of the Execute SQL task, StringVar has been added as the only parameter. You must configure the SQLStatement property of the Execute SQL task. Which SQL statement should you use? A. INSERT INTO dbo.Table (variablevalue) VALUES (@StringVar) B. INSERT INTO dbo.Table (variablevalue) VALUES (\$Project::StringVar) C. INSERT INTO dbo.Table (variablevalue) VALUES (?) D. INSERT INTO dbo.Table (variablevalue) VALUES (\$Package::StringVar)  
Answer: C

QUESTION 67 Drag and Drop Question You are editing a SQL Server Integration Services (SSIS) package that uses checkpoints. The package performs the following steps: 1. Download a sales transaction file by using FTP. 2. Truncate a staging table. 3. Load the contents of the file to the staging table. 4. Merge the data with another data source for loading to a data warehouse.



The checkpoints are currently working such that if any of the four steps fail, the package will restart from the failed step the next time it executes. You need to modify the package to ensure that if either the Truncate Staging Table or the Load Sales to Staging task fails, the package will always restart from the Truncate Staging Table task the next time the package runs. Which three steps should you perform in sequence? (To answer, move the appropriate actions from the list of actions to the answer area and arrange them in the correct order.)

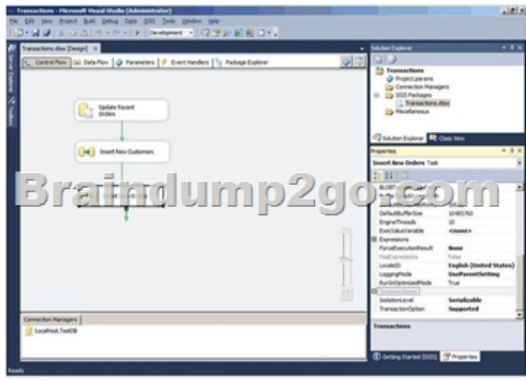


Answer:

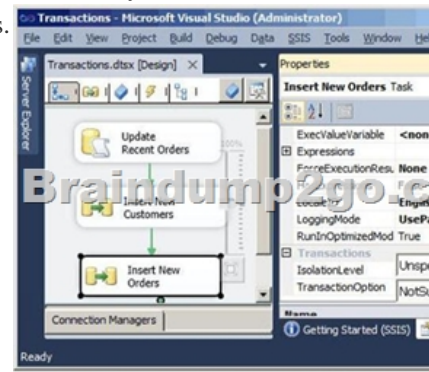


**QUESTION 68** You are designing a SQL Server Integration Services (SSIS) package that uploads a file to a table named Orders in a SQL Azure database. The company's auditing policies have the following requirements:- An entry must be written to a dedicated SQL Server log table named OrderLog. - The entry must be written as soon as the file upload task completes. You need to meet the company's policy requirements. Which event handler should you use? A. OnProgress B. OnInformation C. OnPostExecute D. OnComplete  
**Answer: C**

**QUESTION 69** You are designing a package control flow. The package moves sales order data from a SQL Azure transactional database to an on-premise reporting database. The package will run several times a day, while new sales orders are being added to the transactional database. The current design of the package control flow is shown in the answer area. (Click the Exhibit button.)



The **Insert New Orders Data Flow** task must meet the following requirements:- Usage of the tempdb database should not be impacted. - Concurrency should be maximized, while only reading committed transactions. - If the task fails, only that task needs to be rolled back. You need to configure the **Insert New Orders Data Flow** task to meet the requirements.



How should you configure the transaction properties? To answer, select the appropriate setting or settings in the answer area.  
**Answer:** IsolationLevel = ReadCommitted TransactionOption = Required

**QUESTION 70** Drag and Drop Question You are building a fact table in a data warehouse. The table must have a columnstore index. The table cannot be partitioned. You need to design the fact

table and load it with data. Which three actions should you perform in sequence? (To answer, move the appropriate actions from the list of actions to the answer area and arrange them in the correct order.)



Answer:



!!!RECOMMEND!!!1.|2017 New 70-767 Exam Dumps(PDF & VCE) 247Q&As Download:

<https://www.braindump2go.com/70-767.html> 2.|2017 New 70-767 Study Guide Video: YouTube Video:

[YouTube.com/watch?v=YL58kAz1KoA](https://www.youtube.com/watch?v=YL58kAz1KoA)