



A. chassis B. blade server C. fabric interconnect D. global E. switch Answer: D Hotspot Question 1

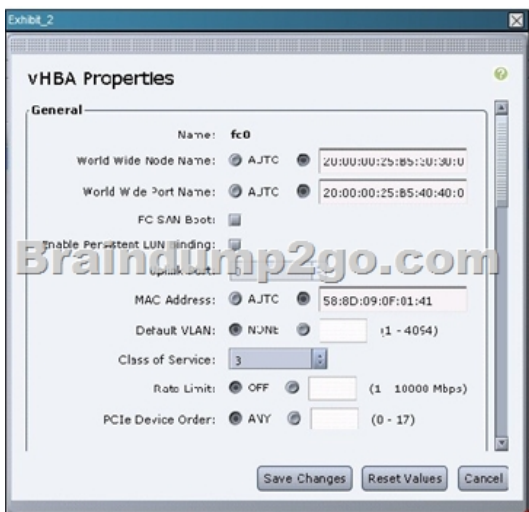
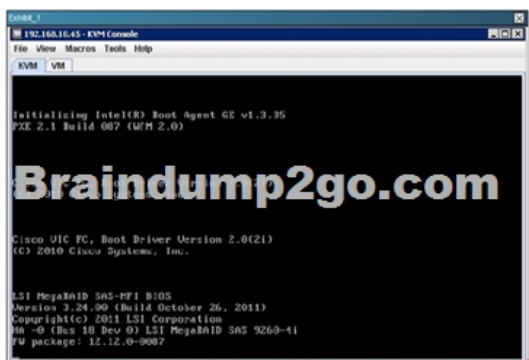
**Instructions**

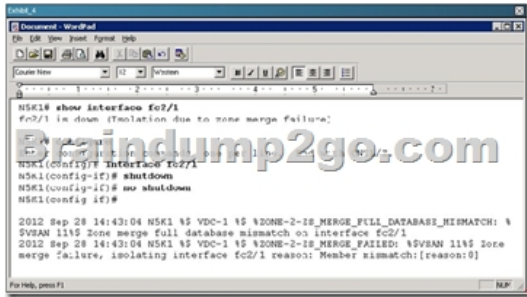
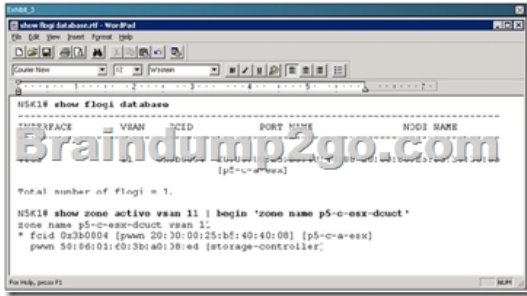
- THIS TASK DOES NOT REQUIRE DEVICE CONFIGURATION.
- Before beginning the questions, carefully read the information on yourself with the network topology.
- To access the multiple-choice questions, click on the numbered boxes on the network topology.
- There are four multiple-choice questions with this task. Be sure to answer the next button.
- Use the tabs at the bottom of the question to navigate between the Topology Exhibit\_1 maps to Question 1, et cetera.

**Braindump2go**

You have received a trouble ticket from a customer with multiple FCoE deployment. The server includes a Cisco UCS P81E VIC that has redundant connections to Cisco Fabric B. To begin, you will concentrate your efforts on achieving connectivity on Fabric B.

The customer is a government agency with an information security policy prohibiting the use of public cloud services. It has provided a topology, command output from the Nexus 5548, and screenshots of the Cisco UCS Manager GUI for you to troubleshoot.





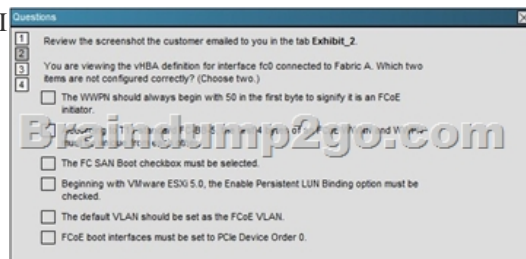
QUESTION 49 Hotspot Question 1



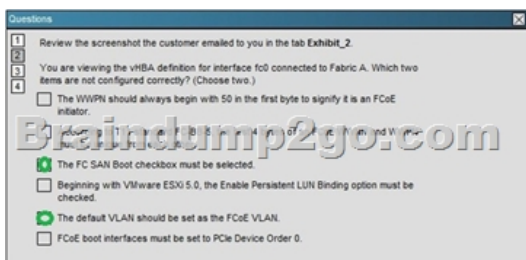
Answer:



QUESTION 50 Hotspot Question 1



Answer:



!!!RECOMMEND!!! 1.[Braindump2go|2016/12 New 642-035 Exam Dumps \(PDF & VCE\) 175Q&As Download:](#)  
<http://www.braindump2go.com/642-035.html> 2.[Braindump2go|2016/12 New 642-035 Study Guide: YouTube Video:](#)  
[YouTube.com/watch?v=xDvSONx77Nw](https://www.youtube.com/watch?v=xDvSONx77Nw)