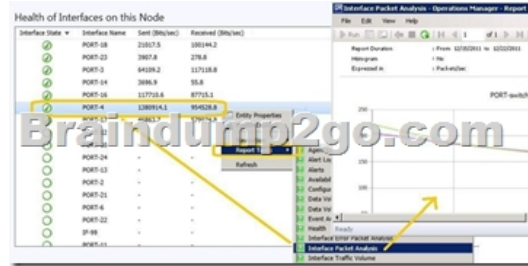


## [NEW-2016-Sep.Real Microsoft 70-246 Braindumps VCE Free Download from Braindump2go[25-30

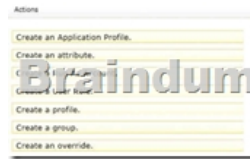
2016/09 New Microsoft 70-246: Private Cloud Monitoring and Operations with System Center 2012 Exam Questions Released Today! Free Instant Download 70-246 Exam Dumps(PDF & VCE) 206Q&As from [Braindump2go.com](#) Today! 100% Real Exam Questions! 100% Exam Pass Guaranteed! 1. | 2016/09 Latest 70-246 Exam Dumps(PDF & VCE) 206Q&As Download: <http://www.braindump2go.com/70-246.html> 2. | 2016/09 Latest 70-246 Exam Questions & Answers: <https://drive.google.com/folderview?id=0B75b5xYLjSSNfm1ZdkNhTTV1bTR5YnhEUllyR3FIYmd4Y1QycHN0N0JOUmxoeFM1ZVhEQkk&usp=sharing>

QUESTION 25 Your company has a private cloud that is managed by using a System Center 2012 Operations Manager infrastructure. The Operations Manager management server role is installed on a server named Server1. You deploy a server named Server2, and then join Server2 to the domain. You log on to Server2 and install the Operations Manager agent. You specify Server1 as the management server. You notice that Server1 did not discover Server2. You need to add Server2 as an agent-managed device. What should you do from the Operations Manager console? A. Run the Discovery Wizard - Computer and Device Management Wizard. B. Modify the Global Management Server Settings - Security settings. C. Import the Windows Servers Base Operating System Management Pack. D. Create a new discovery rule. Answer: B Explanation: System Center Operations Manager 2012: Discovery <http://onetechday.wordpress.com/2012/04/28/system-center-operations-manager-2012-discovery/> By Gol: Windows Servers Base Operating System Management Pack: <http://www.microsoft.com/en-us/download/details.aspx?id=20630> outdated MP for Windows 2000, Windows NT, Windows Server 2003, Windows XP Most likely not the solution, although possible. Solution should be: We did a manual Agent install <http://technet.microsoft.com/en-us/library/hh212853.aspx> To configure manual agent installation settings for a management group 1. Log on to the Operations console with an account that is a member of the Operations Manager Administrators role. 2. Click Administration. 3. In the Administration workspace, expand Administration, and then click Settings. 4. In the Settings pane, expand Type: Server, right-click Security, and then click Properties. 5. In the Global Management Server Settings - Security dialog box, on the General tab, do one of the following: To maintain a higher level of security, click Reject new manual agent installations, and then click OK. To configure for manual agent installation, click Review new manual agent installations in pending management view, and then click OK. Optionally, select Auto-approve new manually installed agents. QUESTION 26 Your company has a private cloud that is managed by using a System Center 2012 infrastructure. You plan to monitor a Microsoft .NET application named App1 that is hosted in the private cloud. You need to import the management packs required to monitor the application. Which management packs should you import? A. the Windows Server 2008 Operating System (Monitoring) management pack and the Operations Manager APM Web IIS 7 management pack B. the Windows Server 2008 Operating System (Discovery) management pack and the Windows Server 2008 Internet Information Services Management Pack C. the Windows Server Internet Information Services 7 Management Pack and the Operations Manager APM Web IIS 7 management pack D. the Windows Server Operating System management pack and the Windows Server 2008 Internet Information Services Management Pack Answer: C Explanation: Import the IIS 7.0 management pack (Microsoft.Windows.InternetInformationServices.2008.mp) and the Operations Manager APM Web IIS 7 management pack (Microsoft.SystemCenter.Apm.Web.IIS7.mp). The Microsoft.SystemCenter.Apm.Web.IIS7.mp management pack is included in the download package in the Management Packs folder--it is not available on the management pack catalog. For information about importing management packs, see Import a Management Pack. Additionally, ensure that IIS 7.0 websites, applications, and services have been discovered. <http://technet.microsoft.com/en-us/library/hh543994.aspx> QUESTION 27 Your company has a private cloud that is managed by using a System Center 2012 Operations Manager infrastructure. The network contains several routers and switches. You open the Network Devices view and discover that a switch is in a critical state. You need to identify the availability of the switch during the past seven days. The solution must also ensure that you can review which servers are connected to the switch. What should you use? A. the Network Vicinity Dashboard B. the Network Node Dashboard C. a state view D. a diagram view Answer: B Explanation: <http://www.techrepublic.com/blog/networking/using-the-network-dashboard-views-in-scom-2012/5226> Network Node Dashboard View A node is any device connected to a network. Switches and routers are among the most common kinds of nodes you will discover. The node dashboard provides details on the health of a particular device. The upper portion of the node dashboard consists of the network vicinity view for that node, as well as "speedometer" gauges for node availability today, yesterday, in the last week, and in the last month. (Periods of time that were not monitored are counted as "available" in the availability statistics, so newly discovered devices will not appear to have had outages in the gauges.) The lower portion of the node dashboard includes a list of all interfaces on the node that are being monitored. From this view, you can manually override the automatic selections of which

interfaces are monitored by SCOM. Also, by right-clicking on specific interfaces, you can pivot to performance or reporting views that drill down into the near term or long term history of an interface. In Figure B, the Interface Packet Analysis report for "PORT 4 on "switch1 during the previous week appears in a second window.



QUESTION 28 Drag and Drop Questions Your company has a private cloud that is managed by using a System Center 2012 infrastructure. The private cloud contains 200 servers that run Windows Server 2008 R2. All of the servers are managed by Operations Manager. The private cloud contains an application named App1 that is deployed on-demand to several servers. The servers that run the application are identified by a registry value set during the application's installation. You create a monitor that targets all of the servers. You need to modify the monitor to only affect the servers that have the application installed.



Answer:



Explanation: An override is used to narrow the focus of the Monitor. <http://technet.microsoft.com/en-us/library/hh212869.aspx>

QUESTION 29 Your company has a private cloud that is managed by using a System Center 2012 infrastructure. The network contains an Operations Manager infrastructure and a Virtual Machine Manager (VMM) infrastructure. The private cloud contains a clustered VMM solution that has two virtualization hosts. The VMM solution hosts seven virtual machines. The virtual machines are configured as shown in the following table. You configure Dynamic Optimization to use the following settings:- A CPU Dynamic Optimization threshold of 30 percent- A CPU host reserve threshold of 15 percent- Low aggressiveness You monitor the VMM solution and discover that the virtual machines rarely migrate from Server1 to Server2 when CPU utilization exceeds the configured threshold. You need to increase the likelihood of the virtual machines migrating from Server1 to Server2 when CPU utilization exceeds the configured threshold. What should you do? A. set the Aggressiveness to High. B. Enable Power Optimization. C. Configure a host profile. D. Modify the CPU host reserve threshold. Answer: A Explanation:

<http://blogs.technet.com/b/scvmm/archive/2011/05/04/dynamic-optimization-and-poweroptimization-in-scvm-2012.aspx> Good

post here: What have you configured regarding the dynamic optimization? How aggressive is the threshold for optimizing your cluster? First of all, you must check the option "Automatically migrate virtual machines to balance load". Second, specify how aggressive the optimization should be. The more aggressive, the more likely to live migrate VMs even for small gain. Last, you can also configure the resource threshold for when optimization should kick in. Default it's set to 30% CPU and 512 MB RAM. To test and verify, right click on your cluster, and click "optimize hosts". VMM will check if it's anything to gain, on demand, and eventually live migrate VMs to balance the load.

<http://social.technet.microsoft.com/Forums/en-US/virtualmachinmgrhyperv/thread/45dfd50da2a4-4a7a-9c88-53fd7cedda77>

QUESTION 30 Your company has a private cloud that is managed by using a System Center 2012 Operations Manager infrastructure. The network contains two network segments that are separated by a firewall. You have a management server named OM1. You create a discovery rule and configure the rule to discover SNMP devices. You discover that only the devices on the network segment that contains OM1 are discovered. You need to ensure that the devices supporting SNMP on both network segments are discovered. Which firewall port should you allow on the firewall? A. TCP 125 B. TCP 22 C. UDP 162 D. UDP 161 Answer: D Explanation: SNMP uses the default UDP port 161 for general SNMP messages and UDP port 162 for SNMP trap messages. <http://technet.microsoft.com/en-us/library/cc959643.aspx> !!!RECOMMEND!!! 1. | 2016/09 Latest 70-246 Exam

Dumps(PDF & VCE) 206Q&As Download:<http://www.braindump2go.com/70-246.html2>.|2016/09 Latest 70-246 Exam Questions & Answers:  
<https://drive.google.com/folderview?id=0B75b5xYLjSSNfm1ZdkNhTTV1bTR5YnhEUllyR3FIYmd4Y1QycHN0N0JOUmxoeFM1ZVhEQkk&usp=sharing>