

## Microsoft Exam Center Release New Exam 74-409 Braindump2go Provide Latest 74-409 Dumps for Free Download (81-90)

2015 Timesaving Comprehensive Guides For Microsoft 74-409 Exam: Using Latst Released Braindump2go 74-409 Practice Tests Questions, Quickly Pass 74-409 Exam 100%! Following Questions and Answers are all the New Published By Microsoft Official Exam Center! Vendor: Microsoft Exam Code: 74-409 Exam Name: Server Virtualization with Windows Server Hyper-V and System Center Keywords: Microsoft 74-409 Exam Dumps,74-409 Practice Tests,74-409 Practice Exams,74-409 Exam Questions,74-409 PDF,74-409 VCE,74-409 Training Guide,74-409 Study Material,74-409 Book

**Compared Before Buying Microsoft 74-409 PDF & V**

Pass4sure	Braindump2go 100% Pass OR Money Back	Test
99 Q&As – Practice	105 Q&As – Real Questions	50 Q&As – I
\$124.99	\$99.99	\$124.99
No Discount	Coupon Code: BDNT2014	No Discount

**QUESTION 81** An organization has private and public cloud resources. The organization has Windows Server 2012 R2 servers that have the Hyper-V role installed. You have one four-node cluster of Hyper-V host servers. You use System Center 2012 R2. The virtual machines that run on the cluster must remain online when you install updates on the Hyper-V host servers. You need to install updates on the Hyper-V host servers. What should you do? A. Configure Windows Serve' Update Services (WSUS) to provide updates to the Hyper-V host servers in the cluster. B. Add all the virtual machines hosted on the cluster to a collection in System Center 2012 R2 Configuration Manager. Deploy updates to the collection. C. Use the Cluster-Aware Updating (CAU) wizard. D. Configure Windows Update on the Hyper-V host servers to download updates from Microsoft Update. Answer: C Explanation:

<http://technet.microsoft.com/en-us/library/gg675084.aspx> CAU is an automated feature that enables you to update clustered servers with little or no loss of availability during the update process. During an Updating Run, CAU transparently performs the following tasks:- Puts each node of the cluster into node maintenance mode- Moves the clustered roles off the node- Installs the updates and any dependent updates- Performs a restart if necessary- Brings the node out of maintenance mode- Restores the clustered roles on the node- Moves to update the next node For many clustered roles (formerly called clustered applications and services) in the cluster, the automatic update process triggers a planned failover, and it can cause a transient service interruption for connected clients. However, in the case of continuously available workloads such as Hyper-V with live migration or file server with SMB Transparent Failover, CAU can coordinate cluster updates with no impact to the service availability. Note The CAU feature is only compatible with Windows Server 2012 R2 and Windows Server 2012 failover clusters and the clustered roles that are supported on those versions.

**QUESTION 82** You administer a server that runs Windows Server 2012 R2 that has the Hyper-V role installed. You plan to apply an update to a virtual machine (VM). You have the following requirements:- You must be able to quickly revert back to a pre-update state. - The solution must minimize storage requirements on the server. You need to apply the update. What should you do? A. Run the Windows PowerShell cmdlet New-VirtualDiskClone. B. Create a checkpoint of the VM. C. Run the Windows PowerShell cmdlet Export-VMSnapshot. D. Export the VM. Answer: B Explanation:

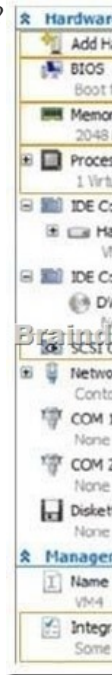
<http://technet.microsoft.com/en-us/library/cc956044.aspx> **QUESTION 83** A company has Hyper-v host servers that run Windows Server 2012. The company also has virtual machines that run Windows Server 2008 R2 or Windows Server 2012. You upgrade the Hyper-V host servers to Windows Server 2012 R2. You need to ensure that all virtual machines can PXE boot by using a standard network adapter. What should you do? A. Create Generation 2 virtual machines. B. Upgrade all existing virtual machines to Windows Server 2012 R2. C. Upgrade the existing virtual machines that run Windows Server 2008 R2 to Windows Server 2012 R2. D. Create Generation 1 virtual machines. Answer: A Explanation: <http://technet.microsoft.com/en-us/library/dn282285.aspx> Gen 2 VMs allow PXE booting

**QUESTION 84** A company has a visualization infrastructure that consists of two Hyper-V host servers. The host servers and all of the virtual machines (VMs) run Windows Server 2012 R2. The company plans to deploy VMs by using file shares that use the Server Message Block (SMB) protocol. You need to store the maximum amount of VM data on the SMB file shares. Which three file types should you store on the SMB file shares? Each correct answer presents part of the solution. A. VM logical unit numbers (LUNs) B. VM configuration files C. Hyper-V host server logical unit numbers (LUNs) D. VM snapshots E. VM virtual hard disks (VHDs) Answer: BDE Explanation: A Windows Server 2012 Hyper-V host can now store virtual machine configuration files, VHDs, and snapshots in file shares over the SMB 3.0 protocol.

<http://technet.microsoft.com/en-us/library/jj134187.aspx> **QUESTION 85** You are the virtualization administrator for an organization

that manages private and public cloud-based resources. The organization uses Windows Server 2012 R2 servers that have the Hyper-V role installed. All Hyper-V host servers are configured as nodes in a four-node cluster. The organization also uses System Center 2012 R2 Configuration Manager. Operating system updates to each host server require a system reboot. You need to ensure that the virtual machines remain online during any reboots required by the updates. What should you do? A. In System Center 2012 R2 Configuration Manager, add all of the servers to a collection. Deploy updates to the collection. B. Apply updates by using the Virtual Machine Servicing Tool (VMST). C. Implement cluster-aware updating with the Cluster-Aware Updating (CAU) wizard. D. Configure orchestrated updates of Hyper-V host clusters in System Center 2012 R2 Virtual Machine Manager (VMM). Answer: C

Explanation: CAU is a tool that coordinates software updates on a cluster node, and Configuration Manager also performs server software updates. It is important to configure these tools so that they do not have overlapping coverage of the same servers in any data-center deployment. This ensures that the objective behind using CAU is not inadvertently defeated, because Configuration Manager-driven updating does not incorporate cluster awareness. CAU and Configuration Manager can work together to deliver synergistic value. By using the public plug-in interface architecture in CAU, Configuration Manager can leverage the cluster awareness of CAU. This allows a customer who already has Configuration Manager deployed to use the cluster awareness capabilities of CAU while taking advantage of the Configuration Manager infrastructure, such as distribution points, approvals, and the Configuration console. <http://technet.microsoft.com/en-us/library/hh831367.aspx> QUESTION 86 Hotspot Question You administer the Hyper-V environment for a company. All virtual machines must use dynamic memory and virtual non-uniform memory access (NUMA) settings that are aligned to the underlying hardware. One virtual machine is misconfigured. You need to update the misconfigured virtual machine. In the Settings dialog box for the virtual machine, which two options should you select?



Answer:



QUESTION 87 You plan to use a Hyper-v host server to host virtual desktops for external customers. You have the following requirements:- Individual virtual machines (VMs) must be isolated from one another. - VMs must have access to the Internet. - IP addresses should be used in the most efficient manner possible. - The configuration must minimize administrative effort and management complexity. You need to configure the virtual environment. What should you do? A. Configure a port virtual local area network (PVLAN). Connect all new VMs to the PVLAN. B. Configure virtual networking with network isolation. Create a unique VM network for each VM. C. Deploy VMs to the same VM network. Enable DHCP Guard and Router Guard network extensions. D. Configure a virtual network with no isolation. Deploy VMs to the same VM network. Configure Windows firewall on each VM to prevent the VM from communicating with other VMs on the same VM network. Answer: A Explanation: PVLAN can be used to create an environment where VMs may only interact with the Internet and not have visibility into other VMs' network traffic. To accomplish this put all VMs (actually their Hyper-V switch ports) into the same PVLAN in isolated mode. Therefore, using only two VLAN IDs, primary and secondary, all VMs are isolated from each other.

[http://technet.microsoft.com/en-us/library/jj679878.aspx#bkmk\\_pvlan](http://technet.microsoft.com/en-us/library/jj679878.aspx#bkmk_pvlan) QUESTION 88 You administer two Windows 2012 R2 servers that have the Hyper-V role installed. You plan to deploy a new Hyper-V cluster. The cluster instance must NOT be added to Active Directory. You need to deploy the cluster. What should you do? A. Use Hyper-V Manager to deploy the cluster. B. Use Failover Cluster Manager to deploy the cluster. C. Run the Windows PowerShell cmdlet New-Cluster. Specify ActiveDirectoryAndDNS for the AdministrativeAccessPoint parameter. D. Run the Windows PowerShell cmdlet New-Cluster. Specify DNS for the AdministrativeAccessPoint parameter. Answer: D Explanation:

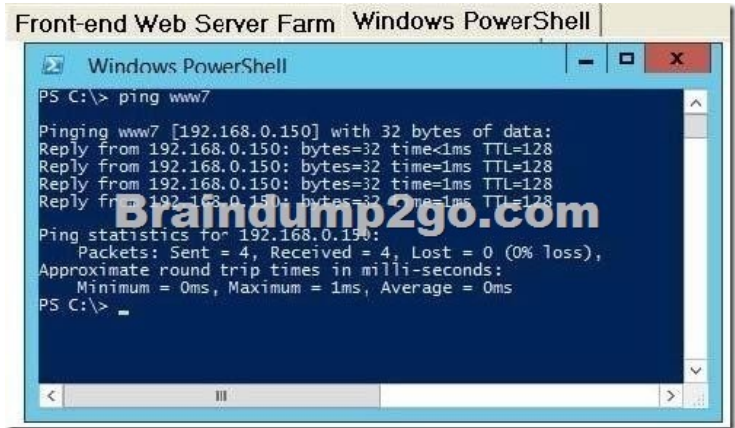
<http://technet.microsoft.com/en-us/library/dn265970.aspx> To deploy an Active Directory-detached cluster, you must use Windows PowerShell. You cannot use Failover Cluster Manager. To create the failover cluster, start Windows PowerShell as an administrator, and then use the New-Cluster cmdlet with the ?AdministrativeAccessPoint parameter set to a value of DNS. QUESTION 89 Hotspot Question A company has a single Active Directory Domain Services (AD DS) domain and Windows Server 2012 R2 servers that have the Hyper-V role installed. The company uses System Center 2012 R2 Virtual Machine Manager (VMM) to manage the Hyper-V environment. Users access company resources from the Internet. There is an existing front-end web server farm that contains virtual machines (VMs), as shown in the Front-end Web Server Farm exhibit. (Click the Exhibit button.) You use the VMs to deliver a website to the Internet.



The servers are configured as shown in the following table:

Environment	Host Name	Subnet Assignment
www	www1	192.168.0.144
www	www2	192.168.0.145
www	www3	192.168.0.146
www	www4	192.168.0.147
www	www5	192.168.0.148
www	www6	192.168.0.149
www	www7	192.168.0.150

You perform connectivity tests between all of the front-end web servers. The connectivity tests all have the same results, as shown in the Windows PowerShell exhibit. (Click the Exhibit button.)



The company plans to enhance overall security of the virtual environment. The front-end web servers must NOT be able to communicate with each other. You need to implement changes to the environment. For each of the following statements, select Yes if the statement is true. Otherwise, select No. Each correct selection is worth one point.

- | Yes                   | No                    |  |
|-----------------------|-----------------------|--|
| <input type="radio"/> | <input type="radio"/> | A port virtual local area network (PVLAN) must be created for the front-end web servers. |
| <input type="radio"/> | <input type="radio"/> | The IP addresses for the PVLAN must be in the same subnet as VLAN22.                     |
| <input type="radio"/> | <input type="radio"/> | The front-end web servers must only communicate with the corporate network.              |

Answer:

Yes	No	
<input checked="" type="radio"/>	<input type="radio"/>	A port virtual local area network (PVLAN) must be created for the front-end web servers.
<input checked="" type="radio"/>	<input type="radio"/>	The IP addresses for the PVLAN must be in the same subnet as VLAN22.
<input type="radio"/>	<input checked="" type="radio"/>	The front-end web servers must only communicate with the corporate network.

Explanation: The most common example of which is Front End Web Servers. In this specific scenario, all of the web servers in a web farm are placed on a single network subnet but are otherwise completely isolated from each other, PVLANS in this context helping to simplify management and improve overall security. Returning to Logical Network design, you should create a single Logical Network when using PVLANS, configuring the properties of the Logical network (as shown below) to specify that sites within this logical network are not connected? and Network sites within this logical network contain private VLANs? <http://blogs.technet.com/b/scvmm/archive/2013/06/04/logical-networks-part-iv-pvlan-isolation.aspx> QUESTION 90A company has Active Directory Domain Services (AD DS) domain controllers that run on Windows Server 2012 R2 servers. There are two forests, and each has a single domain. There is a two-way forest trust between the forests. The company uses Hyper-V for server

visualization. The Hyper-V environment contains the Hyper-V host servers as shown in the following table: You prepare to deploy System Center 2012 R2 Data Protection Manager (DPM) to back up the Hyper-V environment. The deployment must meet the following requirements: - ensure that all Hyper-V servers can be backed up from a minimum of two DPM servers- minimize the total number of DPM servers You need to deploy DPM to the environment. What should you deploy?

Number of Hyper-V hosts	Domain or Workgroup
4	Contoso.com
2	Factikam.com
2	Ext.contoso.com

- A. four DPM servers in the internal network and two DPM servers in the perimeter network
- B. two DPM servers in the internal network and one DPM server in the perimeter network
- C. two DPM servers in the internal network only
- D. two DPM servers in the internal network and two DPM servers in the perimeter network

Answer: C  
 Explanation: DPM can protect servers and workstations across domains within a forest that has a two-way trust relationship with the domain that the DPM server is located in. If there is not a two-way trust across domains, you can protect the computers using DPM's support for computers in workgroups or untrusted domains. For more information, see [Managing Protected Computers in Workgroups and Untrusted Domains](#). DPM supports data protection across forests as long as you establish a forest-level, two-way trust between the separate forests.

<http://technet.microsoft.com/en-us/library/hh758176.aspx> Braindump2go is one of the Leading 74-409 Exam Preparation Material Providers Around the World! We Offer 100% Money Back Guarantee on All Products! Feel Free In Downloading Our New Released 74-409 Real Exam Questions!

Compared Before Buying Microsoft 74-409 PDF & VCE!		
Pass4sure	Braindump2go	TestKing
99 Q&As – Practice	105 Q&As – Real Questions	50 Q&As – Practice
\$124.99	\$99.99	\$124.99
No Discount	Coupon Code: <b>BDNT2014</b>	No Discount

<http://www.braindump2go.com/74-409.html>