

Microsoft 70-342 Practice Exams Free Download From Braindump2go (131-140)

New Braindump2go 70-342 Exam Questions Updated Today! Want to know New Questions in 2015 70-342 Exam? Download Free Braindump2go 70-342 Exam Preparation Materials Now! Vendor: MicrosoftExam Code: 70-342Exam Name: Microsoft Advanced Solutions of Microsoft Exchange Server 2013Keywords: 70-342 Exam Dumps,70-342 Practice Tests,70-342 Practice Exams,70-342 Exam Questions,70-342 PDF,70-342 VCE Free,70-342 Book,70-342 E-Book,70-342 Study Guide,70-342 Braindump,70-342 Prep Guide

Compared Before Buying Microsoft 70-342 PDF & VCE!

Pass4sure	Braindump2go 100% Pass OR Money Back	Test King
146 Q&As - Practice	155 Q&As - Real Questions	126 Q&As - Practice
\$124.99	\$99.99	971 HKD
No Discount	Coupon Code: BDNT2014	No Discount

QUESTION 131 You have an Exchange Server 2010 organization. You need to ensure that users in the organization are notified before they send email messages to external recipients. Which cmdlet should you run? A. Set-Mailbox.B. Set-OrganizationConfig.C. Set-TransportAgent.D. Set-TransportConfig. Answer: B

QUESTION 132 Your network contains an Exchange Server 2013 server. All users access their mailboxes using only Microsoft Office Outlook 2013. You create a policy that archives all email messages that are older than 365 days. You need to ensure that all users can retain certain email messages for up to five years. The solution must allow users to specify which email messages are retained. Which two object types should you create? (Each correct answer presents part of the solution. Choose two). A. A managed folder mailbox policy.B. A retention hold.C. A retention policy.D. Managed custom folders.E. Retention tags. Answer: CE

QUESTION 133 You have an Exchange Server 2013 organization. You need to identify the following information for a user's mailbox: - The size of items in the Inbox folder - The number of items in the Deleted Items folder You must achieve this goal using the minimum amount of administrative effort. Which cmdlet should you run? A. Get-MailboxFolder.B. Get-MailboxFolderStatistics.C. Get-MailboxStatistics.D. Get-StoreUsageStatistics. Answer: B

QUESTION 134 You have an Exchange server 2013 organization. You create a Personal Archive for a user named User1. You need to ensure that e-mail messages older that 180 days are automatically moved to User1's Personal Archive. What should you create? A. a retention tagB. a retention policyC. a managed content settingsD. a managed folder mailbox policy Answer: B

QUESTION 135 You have two Exchange Server 2010 Mailbox named Server1 and Server2. You need to move a user's mailbox from Server1 to Server2. Your solution must minimize downtime for the user. Which cmdlet you run? A. Movemailbox.B. Export-Mailbox.C. Set-MoveRequest.D. New-MoveRequest. Answer: D

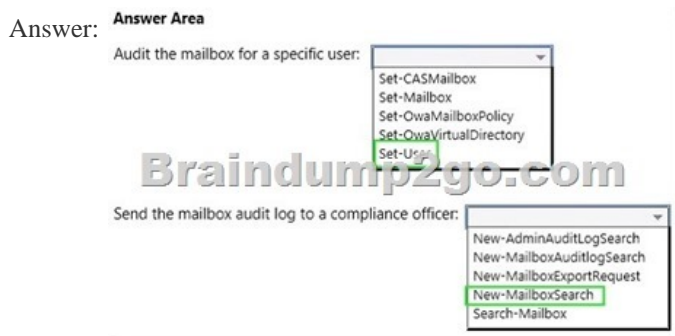
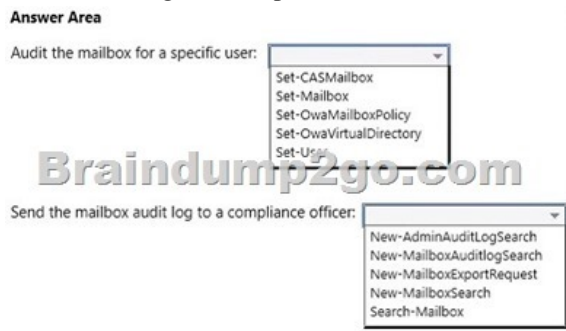
QUESTION 136 Hotspot Question You have an organization that has Exchange Server 2010 and Exchange Server 2013 deployed. Half of the mailboxes are on Exchange Server 2010 servers and the other half are on Exchange Server 2013 servers. You plan to implement Kerberos authentication for all mailbox access. You need to identify which Service Principal Names (SPNs) to associate with each version of Exchange Server. In the table below identify which SPNs to associate with each Exchange Server version. NOTE: Make only one selection in each row.

SPN Name	Exchange Server 2010	Exchange Server 2013
exchangeAB	<input type="radio"/>	<input type="radio"/>
exchangeMDS	<input type="radio"/>	<input type="radio"/>
exchangeRFR	<input type="radio"/>	<input type="radio"/>
HTTP	<input type="radio"/>	<input type="radio"/>

Answer:

SPN Name	Exchange Server 2010	Exchange Server 2013
exchangeAB	<input checked="" type="radio"/>	<input type="radio"/>
exchangeMDS	<input type="radio"/>	<input type="radio"/>
exchangeRFR	<input type="radio"/>	<input type="radio"/>
HTTP	<input type="radio"/>	<input checked="" type="radio"/>

QUESTION 137 Hotspot Question You have an Exchange Server 2013 organization. All users access their mailbox by using Outlook Web Access. Users can view .xml files from Outlook Web Access. You need to meet the following compliance requirements:- Audit the mailbox for a specific user.- Email the mailbox audit log to a compliance officer. Which cmdlet should you use? To answer, select the appropriate options in the answer area.



QUESTION 138 You have an Exchange Server 2013 organization that is integrated with Microsoft Lync Server 2013. You need to get a list of all the calls received and placed by a user named User1 during the last 90 days. Which cmdlet should you use? A. Get-UMMailboxB. Get-UMCallSummaryReportC. Get-UMCallDataRecordD. Get-UMPhoneSession Answer: C Explanation:

The Get-UMCallDataRecord cmdlet displays UM call data records for the last 90 days for a UM-enabled mailbox that you specify. Each UM call data record provides detailed information about all calls either placed to or received by the specified user. This example displays the UM call data records for the UM-enabled user Tony. Get-UMCallDataRecord -Mailbox tony@contoso.com

<https://technet.microsoft.com/en-us/library/ff459248%28v=exchg.150%29.aspx>

QUESTION 139 You have an Exchange Server 2013 organization. A distribution group named Sales_Reports is used to distribute confidential information to all of the senior managers in your company. You need to recommend a solution to ensure that all unencrypted messages sent to the Sales_Reports group are encrypted on the server automatically before they are stored in the mailboxes of the managers. Which two technologies should you include in the recommendation? Each correct answer presents part of the solution. A. A transport ruleB. S/MIMEC. Active Directory Certificate Services (AD CS)D. Active Directory Rights Management Services (AD RMS)E. TLS Answer: AB

Explanation:A: As an administrator, you can create transport rules to enable Microsoft Office 365 Message Encryption. This service lets you encrypt outgoing email messages and remove encryption from incoming encrypted replies to those messages, depending on conditions defined in the rule.B: Encrypted e-mail messagesMessages that are encrypted using S/MIME. Transport rules can access envelope headers contained in encrypted messages and process messages based on predicates that inspect them. Rules with predicates that require inspection of message content, or actions that modify content, can't be processed.

<https://technet.microsoft.com/en-us/library/bb124703%28v=exchg.141%29.aspx>

QUESTION 140 You have an Exchange Server 2013 organization. The human resources (HR) department has a custom form used to enter the personal information of employees. The form uses the Microsoft Word format. You need to prevent users in the HR department from sending any completed forms to users outside of the organization. Which two of the following should you create? Each correct answer presents part of the solution. A. A transport ruleB. A DLP policy templateC. A Send connector of the Partner typeD. A document fingerprintE. A Policy Tip Answer: AD

Explanation:First create a document fingerprint then create a Transport Rule to take action on the fingerprinted document.Note: Information workers in your organization handle many kinds of sensitive information during a typical day. Document Fingerprinting makes it easier for you to protect this information by identifying standard forms that are used throughout your organization. Document Fingerprinting is a Data Loss Prevention (DLP) feature that converts a standard form into a sensitive information type, which you can use to define transport rules and DLP policies.

<http://blogs.technet.com/b/lystavlén/archive/2014/03/04/protect-your-ip-using-document-fingerprints.aspx> Braindump2go 70-342 Latest Updaed Braindumps Including All New Added 70-342 Exam Questions from Exam Center which Guarantees You Can 100% Success 70-342 Exam in Your First Try Exam!

Compared Before Buying Microsoft 70-342 PDF & VCE!		
Pass4sure	Braindump2go 100% Pass OR Money Back	Test King
146 Q&As - Practice	155 Q&As – Real Questions	126 Q&As - Practice
\$124.99	\$99.99	971 HKD
No Discount	Coupon Code: BDNT2014	No Discount

<http://www.braindump2go.com/70-342.html>