

## Latest Braindump2go Microsoft 70-416 Exam Dumps Free Download (11-20)

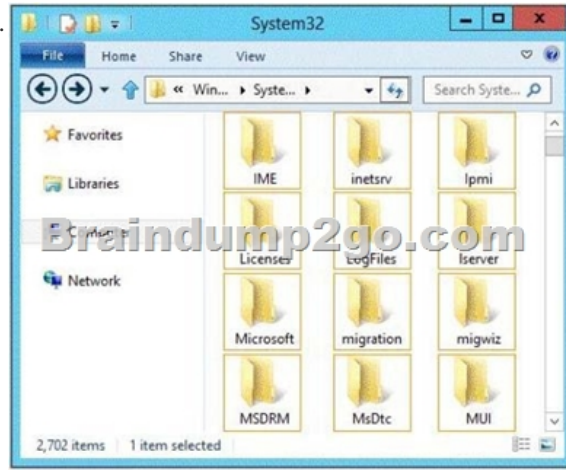
We never believe in second chances and Braindump2go brings you the best 70-416 Exam Preparation Materials which will make you pass in the first attempt. We guarantee all questions and answers in our 70-416 Dumps are the latest released, we check all exam dumps questions from time to time according to Microsoft Official Center, in order to guarantee you can read the latest questions!

Vendor: Microsoft Exam Code: 70-416 Exam Name: Implementing Desktop Application Environments

**Compared Before Buying Micro**

Pass4sure	Braindu
Not In Stock	100% Pass OR
/	93 Q&As
/	\$99.99
/	Coupon Code: BD

QUESTION 11 Your network contains an Active Directory domain named contoso.com. The domain has Remote Desktop Services (RDS) deployed. The domain contains a server named Server1. Server1 has the Remote Desktop Licensing role service installed. You need to back up the Remote Desktop Licensing (RD Licensing) database. Which folder should you include in the backup? To answer, select the appropriate folder in the answer area.



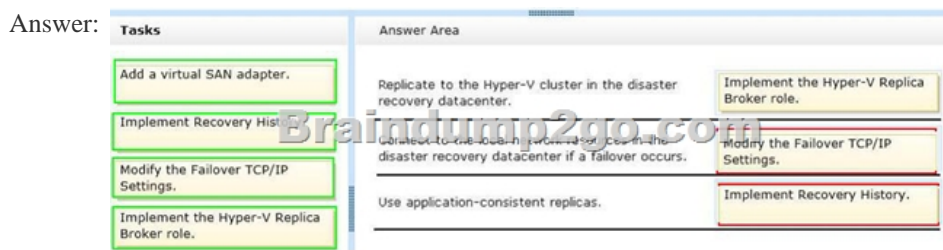
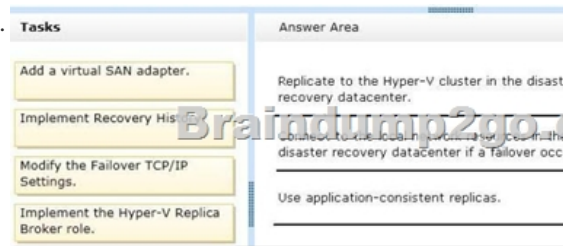
Answer:



QUESTION 12 Your network contains an Active Directory domain named contoso.com. The domain contains a server named Server1 that has the Remote Desktop Licensing role service installed. Server1 fails. You discover that all of the backups for Server1

are unavailable. You deploy a new server named Server2. You install the Remote Desktop Licensing role service on Server2. You need to rebuild the Remote Desktop Licensing (RD Licensing) database on Server2. Which tool should you use? A. Server Manager B. The Add-RDLICENSE cmdlet C. The RD Licensing Diagnoser D. Remote Desktop Licensing Manager Answer: D

QUESTION 13 Drag and Drop Question Your network contains a main datacenter and a disaster recovery datacenter. The main datacenter contains a Virtual Desktop Infrastructure (VDI). The Hyper-V hosts run on a failover cluster. The virtual desktop infrastructure contains 50 personal virtual desktops that have custom settings. In the disaster recovery datacenter, you implement a Hyper-V failover cluster. You plan to implement a business continuity solution for the 50 personal virtual desktops. The virtual desktops must meet the following requirements:- Replicate to the Hyper-V cluster in the disaster recovery datacenter. - Connect to the local network resources in the disaster recovery datacenter if a failover occurs.- Use application-consistent replicas. You need to identify what must be implemented to meet the requirements of the planned deployment. What should you identify? To answer, drag the appropriate task to the correct requirement in the answer area. Each task may be used once, more than once, or not at all. Additionally, you may need to drag the split bar between panes or scroll to view content.



QUESTION 14 Your network contains an Active Directory domain named contoso.com. The domain contains 500 client computers that run Windows 8. You plan to deploy two applications named App1 and App2 to the client computers. App2 is updated by the application manufacturer every month. You need to recommend an application distribution strategy for the applications. The solution must meet the following requirements:- The executable files of App1 must NOT be stored on the client computers. - Users who run App2 must run the latest version of App2 only. What should you recommend using to deploy the applications? A. RemoteApp programs B. Microsoft Enterprise Desktop Virtualization (MED-V) C. Microsoft Application Virtualization (App-V) in standalone mode D. A Group Policy software distribution package assigned to the computer accounts Answer: A Explanation:- RemoteApp enables you to make programs that are accessed remotely through Remote Desktop Services appear as if they are running on the end user's local computer. These programs are referred to as RemoteApp programs. Instead of being presented to the user in the desktop of the Remote Desktop Session Host (RD Session Host) server, the RemoteApp program is integrated with the client's desktop. The RemoteApp program runs in its own resizable window, can be dragged between multiple monitors, and has its own entry in the taskbar. If a user is running more than one RemoteApp program on the same RD Session Host server, the RemoteApp program will share the same Remote Desktop Services session. Incorrect: Not B:- The App-V clients may also be used in a "stand-alone" mode without either of the server infrastructures. In this case, the sequenced packages are delivered using an external technique, such as an Electronic Software Delivery system or manual deployment. - Microsoft Application Virtualization (MS App-V) platform allows applications to be deployed ("streamed") in real-time to any client from a virtual application server. It removes the need for traditional local installation of the applications, although a standalone deployment method is also supported. With a streaming-based implementation, the App-V client needs to be installed on the client machines and application data that is stored on the virtual application server is installed (streamed) to the client cache on demand when it is first used, or pre-installed in a local cache. QUESTION 15 Your network contains servers that run Windows Server 2012 and client computers that run Windows 8. The client computers are installed as virtual machines by using a VHD OS image named Image.vhdx. A line-of-business application named App1 is installed in Image.vhdx by using Microsoft Windows Installer. A new patch named Update.msp is available for App1. You need to ensure that all newly created virtual machines have the latest version of App1 installed. What should you do

first? More than one answer choice may achieve the goal. Select the BEST answer. A. Assign Update.msp to the virtual machines by using a Group Policy object (GPO). B. Run `dism.exe` and specify the `/online` parameter. C. Configure a physical computer to start from `Image.vhdx`. D. Create a new virtual machine by using `Image.vhdx`. Answer: D

QUESTION 16 Your network contains servers that run Windows Server 2012 and client computers that run Windows 8. You plan to deploy an application named App1 to 10 client computers. App1 only runs on Windows XP. You need to recommend an application deployment strategy for App1. What should you include in the recommendation? A. From a Group Policy object (GPO), assign App1 to the 10 client computers. B. From a Microsoft Application Virtualization (App-V) publishing server, publish App1 as an App-V package. C. From a Hyper-V host, install App1 on 10 virtual machines that are enabled for RemoteApp for Hyper. D. From a Remote Desktop Services (RDS) server, deploy App1 as a RemoteApp program. Answer: C

QUESTION 17 Your company has a main office and a branch office. The main office is located in New York. The branch office is located in Toronto. The offices connect to each other by using a slow WAN link. The network contains an Active Directory domain named `contoso.com`. The domain contains servers that run Windows Server 2012 and client computers that run Windows 8. All users have several third-party applications installed. The third-party applications are updated frequently by their manufacturers. You need to recommend an application management solution that meets the following requirements:- If the installation of an application update fails, the installation must restart automatically. - Administrators must be able to generate reports that contain a list of all the failed installations of application updates. Which application management solution should you recommend? More than one answer choice may achieve the goal. Select the BEST answer. A. Deploy pooled virtual desktops by using a Virtual Desktop Infrastructure (VDI). B. Assign applications and updates by using Group Policy. C. Deploy packages by using Microsoft System Center 2012 Configuration Manager. D. Sequence applications by using Microsoft Application Virtualization (App-V) streaming. Answer: C

QUESTION 18 Drag and Drop Question Your network contains servers that run Windows Server 2012 and client computers that run Windows 8. You have a standard company image named `Image.wim` that contains a third-party application named App1. `Image.wim` only contains one image. App1 uses a dynamic link library (DLL) file stored in `C:\AppData`. A new version of App1 named App2 is available. You need to update the DLL file in `Image.wim`. You want to achieve this goal by using the minimum amount of administrative effort. Which three actions should you perform? To answer, move the three appropriate actions from the list of actions to the answer area and arrange them in the correct order.

Actions	Answer Area
Run <code>dism.exe /unmount-wim /mountdir:c:\mount /commit.</code>	
Run <code>dism.exe /mount-wim /wimfile:image.wim /index:1 /mountdir:c:\mount.</code>	
Copy the new DLL of App1 to <code>C:\AppData</code> .	
Copy the new DLL of App1 to <code>C:\Mount\AppData</code> .	
Run <code>dism.exe /online /add-package:app2.dll.</code>	
Run <code>dism.exe /mount-wim /wimfile:image.wim /index:1 /mountdir:c:\.</code>	

Answer:

Actions	Answer Area
Run <code>dism.exe /unmount-wim /mountdir:c:\mount /commit.</code>	Run <code>dism.exe /mount-wim /wimfile:image.wim /index:1 /mountdir:c:\mount.</code>
Run <code>dism.exe /mount-wim /wimfile:image.wim /index:1 /mountdir:c:\mount.</code>	Copy the new DLL of App1 to <code>C:\Mount\AppData</code> .
Copy the new DLL of App1 to <code>C:\AppData</code> .	Run <code>dism.exe /unmount-wim /mountdir:c:\mount /commit.</code>
Copy the new DLL of App1 to <code>C:\Mount\AppData</code> .	
Run <code>dism.exe /online /add-package:app2.dll.</code>	
Run <code>dism.exe /mount-wim /wimfile:image.wim /index:1 /mountdir:c:\.</code>	

QUESTION 19 Your network contains servers that run Windows Server 2012 and client computers that run Windows 7. All of the client computers run a standard image of Windows 7. The network has Microsoft Application Compatibility Toolkit (ACT) 6.0 deployed. The network contains three computers. The computers are configured as shown in the following table. You plan to upgrade all of the client computers to Windows 8. You need to identify whether an application named App1 can run on Windows 8. What should you deploy?

Computer name	Function
Client1	Windows 7 production client
Client2	Windows 8 test client
Server1	ACT Log Processing Service ACT Log Processing Service share ACT database

A. An inventory-collector package to Client2  
 B. An inventory-collector package to Client1  
 C. A runtime-analysis package to Client1  
 D. A runtime-analysis package to Client2  
 Answer: D  
 QUESTION 20 Your network contains an Active Directory domain named contoso.com. You need to recommend an application distribution strategy to meet the following requirements:- Enable client computers to use different versions of the same application. - Minimize the amount of hardware resources used on the client computers. Which application distribution strategy should you recommend?  
 A. Install the applications on Remote Desktop Services (RDS) servers, and then publish the applications as RemoteApp programs.  
 B. Create a Windows Installer package for each application, and then deploy the packages by using a Group Policy object (GPO).  
 C. Create a Windows Installer package for each application, and then deploy the packages by using Microsoft System Center 2012 Configuration Manager.  
 D. Sequence the applications by using the Microsoft Application Virtualization (App-V) Sequencer, and then deploy the applications by using App-V streaming.  
 Answer: D  
 All 93 Microsoft 70-416 Exam Dumps Questions are the New Checked and Updated! In recent years, the 70-416 certification has become a global standard for many successful IT companies. Looking to become a certified Microsoft professional? Download Braindump2go 2015 Latest Released 70-416 Exam Dumps Full Version and Pass 70-416 100%!

**Compared Bef**

**Pass4sure**

**Not In Stock**

/

/

<http://www.braindump2go.com/70-416.html>