

Latest 70-689 Brain Dumps Questions PDF & VCE Free Share (271-280)

Get Prepared with fully updated Microsoft 70-689 Real Exam Questions and Accurate Answers for 70-689 Exam Dumps. Braindump2go IT experts review the 70-689 newly added questions and suggest Correct Microsoft 70-689 Exam Questions Answers in Real Time. 100% Pass easily! Vendor: Microsoft Exam Code: 70-689 Exam Name: Microsoft Upgrading Your Skills to MCSA Windows 8.1

Compared Before Buying Microsoft 70-689 PDF & VCE!

Pass4sure	Braindump2go	TestKing
	100% Pass OR Money Back	
Not In Stock	299 Q&As	Not In Stock
/	\$99.99	/
/	Coupon Code: BDNT2014	/

QUESTION 271 Drag and Drop Question You have a Windows 8.1 computer. The drive on which your File History is stored is almost full. You need to move the File History storage location to another drive. Which three actions should you perform in sequence? (To answer, move the appropriate actions from the list of actions to the answer area and arrange them in the correct order.)

Answer:

QUESTION 272 A company has Windows 8.1 client computers. Users store data files in their user profile libraries. You need to ensure that you can restore data files to any date while minimizing system overhead. Which two actions should you perform? (Each answer presents part of the solution. Choose two.) A. Enable Storage Spaces. B. Configure settings to save copies of files daily. C. Turn on File History. D. Configure Windows 7 File Recovery. Answer: BC

QUESTION 273 A company has Windows 8.1 client computers. A user stores files in multiple locations. You need to determine which of the locations will be included in File History. Which three of the following file locations are included in File History? (Each correct answer presents part of the solution. Choose three.) A. Public Documents and Public Pictures B. Contacts, Desktop, and Favorites C. All system files D. C:\Users and C:\ProgramData E. My Documents and My Pictures F. Desktop and Recycle Bin Answer: AB E Explanation: - File History has a predefined set of items that it backs up automatically: all your libraries (both default libraries and custom libraries you created), the Desktop, your Contacts, Internet Explorer favorites and the SkyDrive. - Library example:



QUESTION 274A computer runs Windows 8.1. You install an application by running an .msi file. You need to apply a patch to the application. Which command should you run? A. `msiexec/x "C:\MyPatch.msp"` B. `dism /get-AppPatches /get-PackageInfo:C:\MyPatch.msp` C. `dism/Online/add-package:C:\MyPatch.msp` D. `msiexec/p "C:\MyPatch.msp"` Answer: D

Explanation: C. would need the following format: `DISM.exe /Online /Add-Package /PackagePath:c:\file.msu` / correct answer D

QUESTION 275A company has 10 client computers that run Windows 8.1. An employee updates a device driver on her computer and then restarts the computer. Windows does not start successfully. You start the computer in Safe Mode. You need to identify the most recently installed driver and gather the maximum amount of information about the driver installation. What should you do? A.

In the Programs and Features Control Panel item, display the installed updates. B. In the Event Viewer console, display the Hardware Events log. C. Display the contents of the `Windowsinfsetupapi.dev.log` file. D. In Device Manager, run a scan for hardware changes. Answer: C Explanation: In Windows Vista and later versions of Windows, SetupAPI logs information about device installation in a plaintext log file that you can use to verify the installation of a device and to troubleshoot device installation problems. If a signing problem exists, SetupAPI will log information about the signing problem in the log file. The name of this log file is `SetupAPI.dev.log`, and it is located, by default, in the Windows INF file directory (`%SystemRoot%\inf`). The SetupAPI log for Windows Vista and later versions of Windows is an enhanced version of the SetupAPI log that is supported by Windows Server 2003, Windows XP, and Windows 2000. The SetupAPI log for Windows Vista and later versions of Windows includes an enhanced format that makes it easier for a reader to locate and understand the logged information.

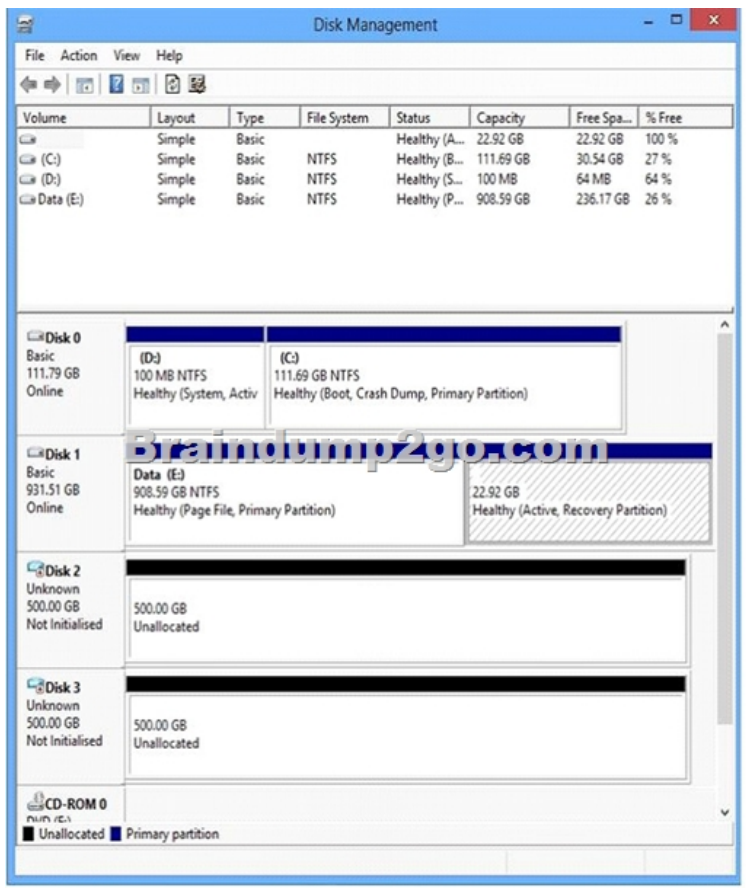
[http://msdn.microsoft.com/en-us/library/windows/hardware/ff550863\(v=vs.85\).aspx](http://msdn.microsoft.com/en-us/library/windows/hardware/ff550863(v=vs.85).aspx) QUESTION 276 You administer Windows 8.1 computers in your company network. Music files with the MP3 extension are opening in the Music Windows Store app. You need to ensure that MP3 files always open in the Windows Media Player desktop application. What should you do? A. Right-click an MP3 file, select Open With, choose default program, and then select Windows Media Player with the use this app for all .MP3 files option selected. B. From Control Panel, open Default Programs, open Change AutoPlay setting, and then select the Play (Windows Media Player) setting for Music. C. From Windows Media Player, select Options, and then on the Player tab, select the Add local media files to library when played option. D. From Control Panel, open Default Programs, open Set your default programs, and then in associations for Music, clear the .mp3 selection. Answer: A

QUESTION 277A company has a Microsoft Software Assurance with Volume Licensing agreement. All client computers run Windows 8.1. An employee updates a device driver on his computer and then restarts the computer. Windows does not start successfully. You establish that the updated driver is the cause of the problem. You need to prevent the updated driver from running on startup, without impacting other drivers or personal data. What should you do? A.

Use the Windows 8.1 PC Reset feature. B. Start the computer with the Diagnostic and Recovery Toolset and configure the driver options. C. Reset the computer to the manufacturer's system image. D. Use the File History feature. Answer: B Explanation: Microsoft Software Assurance with Volume Licensing agreement = you can download (DART)

<http://www.microsoft.com/en-us/windows/enterprise/products-and-technologies/mdop/dart.aspx>

<http://www.sophia.org/tutorials/diagnostics-and-recovery-toolset-dart-overview> QUESTION 278 Hotspot Questions You have the disk configuration shown in the following exhibit. (Click the Exhibit button.)



To answer, complete each statement according to the information presented in the exhibit. Each correct selection is worth one point.

You cannot create the spanned volume until disk 2 and disk 3 are first ...

 formatted.
 initialized.
 partitioned.

Braindump2go.com

Disks 2 and 3 are both ... disks.

 external
 fixed
 virtual

Answer: You cannot create the spanned volume until disk 2 and disk 3 are first ...

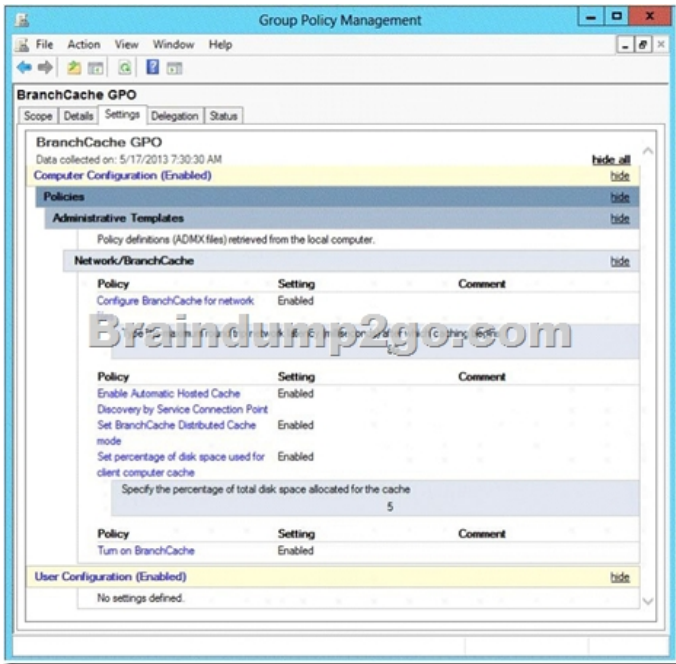
 formatted
 initialized.
 partitioned.

Braindump2go.com

Disks 2 and 3 are both ... disks.

 external
 fixed
 virtual

QUESTION 279 Hotspot Questions Your company has a main office and two branch offices named Branch1 and Branch2. The main office contains a file server named Server1 that has BranchCache enabled. Branch1 contains a server named Server2 that is configured as a hosted cache server. All client computers run Windows 8.1 Enterprise. All of the computers are joined to an Active Directory domain. The BranchCache settings of all the computers are configured as shown in the following exhibit. (Click the Exhibit button.)



In the table below, identify the effective setting for the client computers in each branch office. Make one selection in each column. Each correct selection is worth one point.

Effective setting	Branch1 Computers	Branch2 Computers
Will not use BranchCache.	<input type="radio"/>	<input type="radio"/>
Will retrieve cached content from peers.	<input type="radio"/>	<input type="radio"/>
Will retrieve cached content from Server1.	<input type="radio"/>	<input type="radio"/>
Will retrieve cached content from Server2.	<input type="radio"/>	<input type="radio"/>

Answer:

Effective setting	Branch1 Computers	Branch2 Computers
Will not use BranchCache.	<input type="radio"/>	<input checked="" type="radio"/>
Will retrieve cached content from peers.	<input type="radio"/>	<input checked="" type="radio"/>
Will retrieve cached content from Server1.	<input type="radio"/>	<input checked="" type="radio"/>
Will retrieve cached content from Server2.	<input checked="" type="radio"/>	<input type="radio"/>

QUESTION 280 You have a computer that runs Windows 8.1. You install a custom application by using an .msi file that is located in your Documents library. The computer begins to experience performance issues. You decide to reinstall the custom application. When you run the .msi file, you receive an error message about a corrupted file. You need to ensure that you can reinstall the application. What should you do? A. Run the replace command, specify the application's .msi file as the source, and then specify the application's original installation directory as the destination. B. Run the msiexec /f command and specify the application's .msi file. C. Use File History to revert the application's .msi file to a previous version. D. Run the reset /f command and specify the application's .msi file. Answer: C Want to be 70-689 certified? Using Braindump2go New Released 70-689 Exam Dumps Now!

We Promise you a 100% Success Passing Exam 70-689 Or We will return your money back instantly!

Compared Before Buying Micro	
Pass4sure	Braindu 100% Pass OR
Not In Stock	299 Q&As
/	\$99.99
/	Coupon Code: BD

<http://www.braindump2go.com/70-689.html>