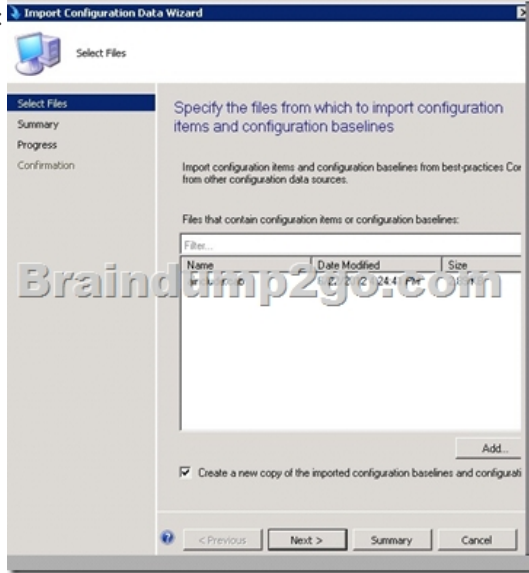


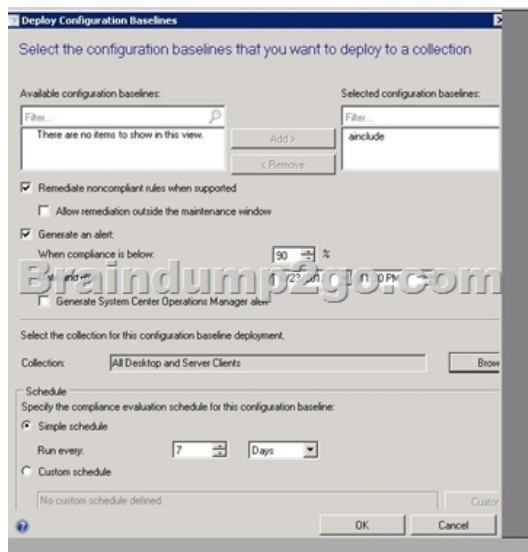
(Jun-2016-Updated)Braindump2go.com Offers 70-243 New Questions for 70-243 Exam Candidates(NQ101-NQ110)

2016 June Microsoft Official: 70-243 PDF & 70-243 VCE Dumps with 154Q New 70-243 Exam Questions New Updated By Braindump2go.com Today! Free Download 70-243 Exam Dumps Today! 100% Exam Pass Guaranteed! NEW QUESTION 101 - NEW QUESTION 110 QUESTION 101Your network contains a System Center 2012 Configuration Manager environment. Two weeks ago, you deployed a Windows Installer package named App1. You need to remediate a registry value that applies only to the client computers that have App1 installed. The solution must minimize network traffic. What should you do? A. Modify the App1 Windows Installer package to contain the registry setting, and then create a new application for App1.B. Modify the App1 Windows Installer package to contain the registry setting, and then configure the existing application for App1 to use the new Windows Installer package.C. Create an application-based configuration item, configure a rule for an existential type, and then import the registry setting from a client computer that has App1 installed.D. Create an application-based configuration item, configure the detection method to use the Windows Installer product code of App1, and then import the registry setting from a client computer that has App1 installed. Answer: DExplanation:<http://technet.microsoft.com/en-us/library/gg682139.aspx>Introduction to Compliance Settings in Configuration ManagerCompliance settings in System Center 2012 Configuration Manager provides a unified interface and user experience that lets you manage the configuration and compliance of servers, laptops, desktop computers, and mobile devices in your organization. Compliance settings contains tools to help you assess the compliance of users and client devices for many configurations, such as whether the correct Windows operating system versions are installed and configured appropriately, whether all required applications are installed and configured correctly, whether optional applications are configured appropriately, and whether prohibited applications are installed. Additionally, you can check for compliance with software updates, security settings, and mobile devices. Configuration item settings of the type Windows Management Instrumentation (WMI), registry, script, and all mobile device settings in Configuration Manager let you automatically remediate noncompliant settings when they are found.Compliance is evaluated by defining a configuration baseline that contains the configuration items that you want to evaluate and settings and rules that describe the level of compliance you must have. You can import this configuration data from the web in Microsoft System Center Configuration Manager Configuration Packs as best practices that are defined by Microsoft and other vendors, in Configuration Manager, and that you then import into Configuration Manager. Or, an administrative user can create new configuration items and configuration baselines.<http://technet.microsoft.com/en-us/library/gg712331.aspx>How to Create Windows Configuration Items for Compliance Settings in Configuration ManagerCreate configuration items in System Center 2012 Configuration Manager to define configurations that you want to manage and assess for compliance on devices.There are different types of configuration items: Application configuration itemUsed to determine compliance for an application. This can include whether the application is installed and details about its configuration.Operating system configuration item Used to determine compliance for settings that relate to the operating system and its configuration. Software updates configuration item Automatically created when you download software updates with Configuration Manager.You do not create or see these configuration items in the Compliance Settings node, but you can select them when you define configuration baselines. General configuration item Used to determine compliance for mobile devices....Steps to Create a New Configuration Item for Client ComputersUse the following required steps to create a configuration item by using the Create Configuration Item Wizard:Step 1: Start the Create Configuration Item Wizard.Step 2: Provide general information about the configuration item.Step 3: Provide detection method information for the configuration item.Step 4: Configure settings for the configuration item.Step 5: Configure compliance rules for the configuration item.Step 6: Specify supported platforms for the configuration item.Step 7: Complete the wizard....http://technet.microsoft.com/en-us/library/gg712331.aspx#BKMK_Step3Step 3: Provide Detection Method Information3 for the Configuration ItemUse this procedure to provide detection method information for the configuration item.Note: Applies only if you selected This configuration item contains application settings on the General page of the wizard.A detection method in Configuration Manager contains rules that are used to detect whether an application is installed on a computer. This detection occurs before the configuration item is assessed for compliance. To detect whether an application is installed, you can detect the presence of a Windows Installer file for the application, use a custom script, or select Always assume application is installed to assess the configuration item for compliance regardless of whether the application is installed. QUESTION 102Your company has a production network and a test network. Both networks have System Center 2012 Configuration Manager deployed. You create the following objects on the test network:- A configuration item named WebCI- A configuration baseline named WebBaseline that contains WebCI - A collection named WebServers that contains all of the Web servers on the test network. You export the configuration baseline to Baseline.cab. You open the Configuration Manager console, you click Assets and Compliance, and then

you expand Compliance Settings. You need to apply the configuration baseline to the Web servers on the production network. What should you do next? (Choose all that apply.) A. Right-click WebBaseline, select Categorize, and then select Server.B. Right-click Configuration Baselines, and then select Import Configuration Data.C. Right-click WebCI, select Export, and then specify Baseline.cab as the export file.D. Right-click WebBaseline, and then select Properties. In the Deployments tab, type WebServers in The Filter... box.E. Right-click WebBaseline, select Deploy, and then select the WebServers collection. Answer: BE



Select Base line, deploy



QUESTION 103 Your company uses System Center 2012 Configuration Manager to monitor compliance. The company has a configuration baseline for each server that has the Web Server (IIS) server role installed. A new corporate policy specifies that the maximum TCP window size for all of the Web servers must be 131,072 bytes. You discover that the TCP window size is set in the following registry entry: HKEY_LOCAL_MACHINESystemCurrentControlSetServicesHTTPParametersMaxBytesPerSecond You need to generate an error message for all of the Web servers that do NOT comply with the corporate policy. What should you do? A. Add a new configuration item that has a registry value setting type to the configuration baseline. B. Create a query-based collection that contains all of the Web servers, and then initiate an inventory collection. C. Create a query that returns a list of all the Web servers, and then search the query results for the registry value. D. Add a new configuration item that has an Internet Information Services (IIS) metabase setting type to the configuration baseline. Answer: A

Explanation: <http://technet.microsoft.com/en-us/library/gg682139.aspx> Introduction to Compliance Settings in Configuration Manager Compliance settings in System Center 2012 Configuration Manager provides a unified interface and user experience that lets you manage the configuration and compliance of servers, laptops, desktop computers, and mobile devices in your organization. Compliance settings

contains tools to help you assess the compliance of users and client devices for many configurations, such as whether the correct Windows operating system versions are installed and configured appropriately, whether all required applications are installed and configured correctly, whether optional applications are configured appropriately, and whether prohibited applications are installed. Additionally, you can check for compliance with software updates, security settings, and mobile devices. Configuration item settings of the type Windows Management Instrumentation (WMI), registry, script, and all mobile device settings in Configuration Manager let you automatically remediate noncompliant settings when they are found. Compliance is evaluated by defining a configuration baseline that contains the configuration items that you want to evaluate and settings and rules that describe the level of compliance you must have. You can import this configuration data from the web in Microsoft System Center Configuration Manager Configuration Packs as best practices that are defined by Microsoft and other vendors, in Configuration Manager, and that you then import into Configuration Manager. Or, an administrative user can create new configuration items and configuration baselines.

<http://technet.microsoft.com/en-us/library/gg712331.aspx> How to Create Windows Configuration Items for Compliance Settings in Configuration Manager Create configuration items in System Center 2012 Configuration Manager to define configurations that you want to manage and assess for compliance on devices. There are different types of configuration items: Application configuration item Used to determine compliance for an application. This can include whether the application is installed and details about its configuration. Operating system configuration item Used to determine compliance for settings that relate to the operating system and its configuration. Software updates configuration item Automatically created when you download software updates with Configuration Manager. You do not create or see these configuration items in the Compliance Settings node, but you can select them when you define configuration baselines. General configuration item Used to determine compliance for mobile devices....

Steps to Create a New Configuration Item for Client Computers Use the following required steps to create a configuration item by using the Create Configuration Item Wizard: Step 1: Start the Create Configuration Item Wizard. Step 2: Provide general information about the configuration item. Step 3: Provide detection method information for the configuration item. Step 4: Configure settings for the configuration item. Step 5: Configure compliance rules for the configuration item. Step 6: Specify supported platforms for the configuration item. Step 7: Complete the wizard. QUESTION 104 You have a System Center 2012 R2 Configuration Manager Service Pack 1 (SP1) deployment. You plan to create a Configuration Manager query. You need to identify which components can be included in the WQL statement. Which three components should you identify? Each correct answer presents a complete solution. A. Criteria B. Collection limiting C. Security D. Omit duplicate rows E. Joins Answer: ADE

QUESTION 105 You have a System Center 2012 R2 Configuration Manager Service Pack 1 (SP1) deployment. Hardware inventory is enabled for all of the Configuration Manager clients. You create a device collection named Finance. All of the client computers in the finance department are members of the Finance collection. You need to include Trusted Platform Module (TPM) information in the hardware inventory of the finance department computers. Which object should you configure in Configuration Manager? A. Hardware Requirements B. Custom Client Device Settings C. Network Discovery D. a configuration item E. a computer association Answer: D

Explanation: We are going to use Desired Configuration Management to run a script on target machines. The script will run on a regular schedule and place Bitlocker data into a new WMI class named SCCM_Bitlocker. Then, we will SCCM extend hardware inventory so that it collects data from this new class. Compliance Rules Setting First, we will need to create a configuration baseline, a configuration item and two compliance rules. Reference: Tracking Bitlocker Status using SCCM 2012

<https://winventures.wordpress.com/2013/09/18/tracking-bitlocker-status-using-sccm-2012/> QUESTION 106 You manage a System Center 2012 R2 Configuration Manager Service Pack 1 (SP1) deployment. The deployment contains a reporting services point. You subscribe to all client status reports. You need to subscribe to an Asset Intelligence report. From where should you configure the subscription? A. Reporting Services Configuration Manager B. the Report Server Web service site C. the Monitoring workspace from the Configuration Manager Console D. SQL Server Configuration Manager Answer: A

QUESTION 107 Hotspot Question Your network contains a single Active Directory named contoso.com. A System Center 2012 R2 Configuration Manager Service Pack 1 (SP1) primary site named S01 is deployed to contoso.com. The Configuration Manager deployment includes the servers configured as shown in the following table.

Server name	Site system role
Server1	Site server
Server2	Management point
Server3	Distribution point
Server4	Enrollment point
Server5	Software update point

The distribution point is configured to require HTTPS for client communications. You have a domain computer named Computer1

that runs the 64-bit version of Windows 8.1. You need to install the Configuration Manager client on Computer1 manually. Which network location should you use to start the installation? To answer, select the appropriate options in the answer area.

Answer Area



Answer:

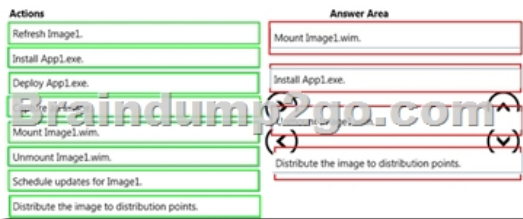


QUESTION 108 Your network contains a single Active Directory domain named contoso.com. System Center 2012 R2 Configuration Manager Service Pack 1 (SP1) is deployed to contoso.com. You need to inventory the installed software on Windows Phone and iOS devices. What should you do first? A. Configure Software Inventory. B. Add a Microsoft Intune subscription. C. Configure Network Discovery. D. Install the Configuration Manager client. E. Enroll the mobile devices. Answer: A Explanation: Software inventory must be enabled for clients to collect inventory. Reference: Prerequisites for Software Inventory

QUESTION 109 Drag and Drop Question Your network contains a single Active Directory domain named contoso.com. System Center 2012 R2 Configuration Manager Service Pack 1 (SP1) is deployed to contoso.com. You have a Windows 8.1 operating system image named Image1 in Configuration Manager. Image1 has the data source of \\server1.contoso.com\source\image1.wim. New client computers are deployed by using Image1. You have an application named App1. App1 is a configuration utility that must be installed by using a Windows Installer (MSI) package. You need to ensure that App1 is included in all future deployments of Image1. Which four actions should you perform in sequence? To answer, move the appropriate actions from the list of actions to the answer area and arrange them in the correct order.



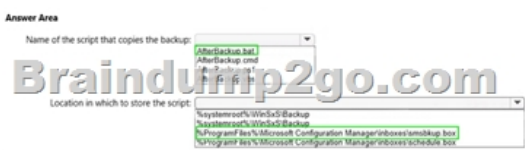
Answer:



QUESTION 110 Hotspot Question You have a System Center 2012 R2 Configuration Manager Service Pack 1 (SP1) deployment. You enable the Backup Site Server maintenance task and you configure the task to back up to a local drive. You need to copy the backup to a network share automatically as soon as the backup completes. What should you do? To answer, select the appropriate options in the answer area.



Answer:



2016 Braindump2go Valid Microsoft 70-243 Exam Study Materials: 1.| Latest Braindump2go 154q 70-243 PDF and 70-243 VCE Dumps: <http://www.braindump2go.com/70-243.html> [100% Exam Pass Guaranteed!] 2.| New Braindump2go 70-243 Exam Questions PDF - Google Drive: https://drive.google.com/folderview?id=0B9YP8B9sF_gNeFNybGdGYU9wQVU&usp=sharing 3.| More Braindump2go 70-243 Dumps - From 2015 to 2016 - Google Drive: <https://drive.google.com/folderview?id=0B75b5xYLjSSNfkdreTRTTVpZRTBaMmMtbUFuU0RnNzBWNDYyOXNIUndGUEhzOTVabkFzdEk&usp=sharing>