


Get Free PDF Microsoft 70-411 Braindumps From Braindump2go - Guarantee 100% Pass 70-411 Exam (91-100)

MICROSOFT OFFICIAL: New Updated 70-411 Exam Questions from Braindump2go 70-411 PDF Dumps and 70-411 VCE Dumps! Welcome to Download the Newest Braindump2go 70-411 VCE&PDF Dumps:
<http://www.braindump2go.com/70-411.html> (322 Q&As) The 70-411 Exam Practice Questions and Answers are ideal for the aspiring candidates to grab exceptional grades in Microsoft 70-411 Exam! The 70-411 Questions and Answers are developed using the latest updated course content and all the answers are verified to ensure phenomenon preparation for the actual 70-411 Exam! Exam Code: 70-411 Exam Name Administering Windows Server 2012 Certification Provider: Microsoft Corresponding Certifications: MCSA, MCSA: Windows Server 2012, MCSE, MCSE: Desktop Infrastructure, MCSE: Private Cloud, MCSE: Server Infrastructure
Keywords: 70-411 Dumps, 70-411 Microsoft Exam Questions, 70-411 VCE, 70-411 PDF, 70-411 Practice Exams, 70-411 Practice Tests, 70-411 Book, 70-411 Study Guide

Administering Windows Server 2012 R2 Exam: 70-411



Product Description Exam Number/Code: 70-411

Exam Number/Code: 70-411

"Administering Windows Server 2012 R2 Exam", also known as 70-411 exam, is a Microsoft Certification. With the complete collection of questions and answers, Braindump2go has assembled to take you through 322 Q&As to your 70-411 Exam preparation. In the 70-411 exam resources, you will cover every field and category in Microsoft MCSA helping to ready you for your successful Microsoft Certification.

Questions and Answers : 322 Q&As
Updated: Sep 14, 2015
~~\$429.99~~ **\$99.99**

[PDF DEMO](#)

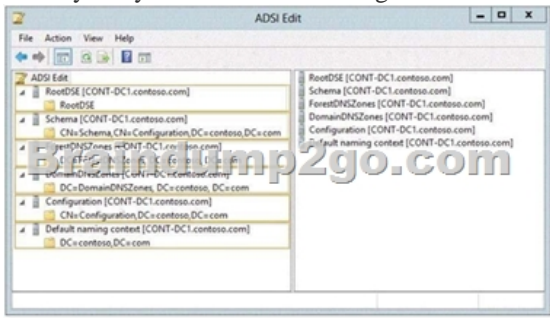
[CHECK OUT](#)

Free Demo Download

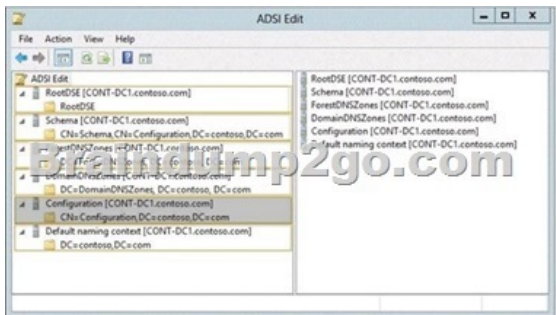
Braindump2go offers free demo for 70-411 exam (Administering Windows Server 2012 R2 Exam). You can check out the interface, question quality and usability of our practice exams before you decide to buy it.

Printable PDF **Premium VCE + VCE Simulator**

QUESTION 91 Hotspot Question Your network contains an Active Directory forest named contoso.com. The forest contains a single domain. All domain controllers run Windows Server 2012 R2 and are configured as DNS servers. All DNS zones are Active Directory-integrated. Active Directory Recycle Bin is enabled. You need to modify the amount of time deleted objects are retained in the Active Directory Recycle Bin. Which naming context should you use? To answer, select the appropriate naming context in the answer area.



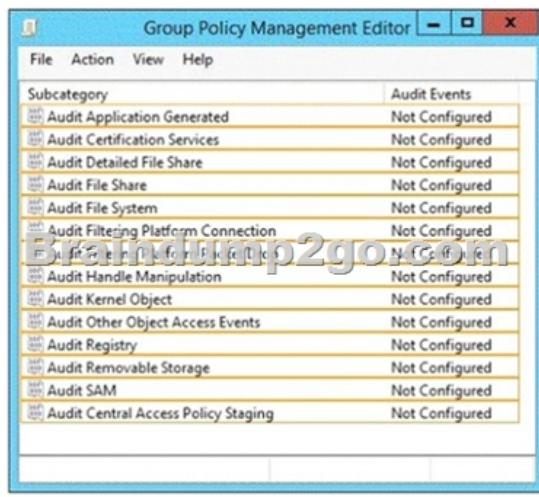
Answer:



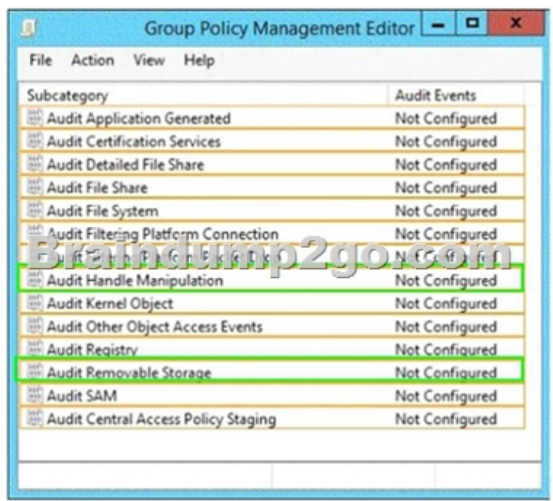
Explanation: <http://technet.microsoft.com/en-us/library/dd392260%28v=ws.10%29.aspx> QUESTION 92 Your network contains an Active Directory domain named contoso.com. The domain contains six domain controllers. The domain controllers are configured as shown in the following table.

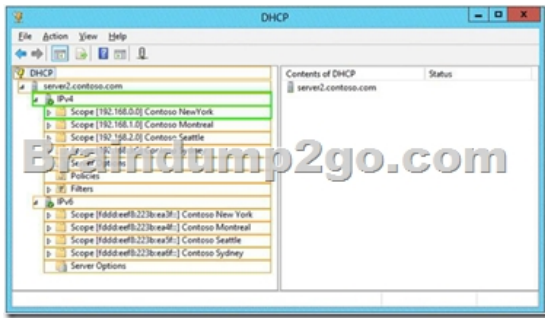
Domain controller name	Operating system	FSMO role
DC1	Windows Server 2008 R2	PDC emulator
DC2	Windows Server 2012 R2	Schema master
DC3	Windows Server 2008 R2	Infrastructure master
DC4	Windows Server 2008 R2	Domain naming master
DC5	Windows Server 2008 R2	RID master
DC6	Windows Server 2012 R2	None

The network contains a server named Server1 that has the Hyper-V server role installed. DC6 is a virtual machine that is hosted on Server1. You need to ensure that you can clone DC6. What should you do? A. Transfer the schema master to DC6.B. Transfer the schema master to DC4.C. Transfer the PDC emulator to DC2.D. Transfer the PDC emulator to DC5. Answer: C
 Explanation: A deployed Windows Server 2012 domain controller (virtualized or physical) that hosts the PDC emulator role (DC1). To verify whether the PDC emulator role is hosted on a Windows Server 2012 domain controller, run the following Windows PowerShell command: Get-ADComputer (Get-ADDomainController - Discover - Service "PrimaryDC"). Name - Property operatingsystemversion | fl http://technet.microsoft.com/en-us/library/hh831734.aspx#steps_deploy_vdc QUESTION 93
 Hotspot Question Your network contains an Active Directory domain named contoso.com. All servers run Windows Server 2012 R2. You need to audit successful and failed attempts to read data from USB drives on the servers. Which two objects should you configure? To answer, select the appropriate two objects in the answer area.



Answer:





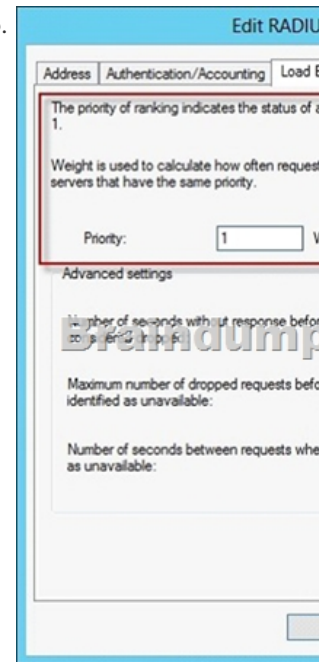
QUESTION 97 Your network contains an Active Directory domain named adatum.com. A network administrator creates a Group Policy central store. After the central store is created, you discover that when you create new Group Policy objects (GPOs), the GPOs do not contain any Administrative Templates. You need to ensure that the Administrative Templates appear in new GPOs. What should you do? A. Add your user account to the Group Policy Creator Owners group. B. Configure all domain controllers as global catalog servers. C. Copy files from %Windir%\Policydef\definitions to the central store. D. Modify the Delegation settings of the new GPOs. Answer: C Explanation: To take advantage of the benefits of .admx files, you must create a Central Store in the SYSVOL folder on a domain controller. The Central Store is a file location that is checked by the Group Policy tools. The Group Policy tools use any .admx files that are in the Central Store. The files that are in the Central Store are later replicated to all domain controllers in the domain.

QUESTION 98 Your network contains two Active Directory forests named contoso.com and dev.contoso.com. The contoso.com forest contains a domain controller named DC1. The dev.contoso.com forest contains a domain controller named DC2. Each domain contains an organizational unit (OU) named OU1. Dev.contoso.com has a Group Policy object (GPO) named GPO1. GPO1 contains 200 settings, including several settings that have network paths. GPO1 is linked to OU1. You need to copy GPO1 from dev.contoso.com to contoso.com. What should you do first on DC2? A. From the Group Policy Management console, right-click GPO1 and select Copy. B. Run the mtdit.exe command and specify the /Domain:contoso.com /DC:DC1 parameter. C. Run the Save-NetGpocmdlet. D. Run the Backup-Gpocmdlet. Answer: A Explanation: To copy a Group Policy object: In the GPMC console tree, right-click the GPO that you want to copy, and then click Copy. To create a copy of the GPO in the same domain as the source GPO, right-click Group Policy objects, click Paste, specify permissions for the new GPO in the Copy GPO box, and then click OK. For copy operations to another domain, you may need to specify a migration table. The Migration Table Editor (MTE) is provided with Group Policy Management Console (GPMC) to facilitate the editing of migration tables. Migration tables are used for copying or importing Group Policy objects (GPOs) from one domain to another, in cases where the GPOs include domain-specific information that must be updated during copy or import.

Source WS2008R2: Backup the existing GPOs from the GPMC, you need to ensure that the ?Group Policy Objects? container is selected for the ?Backup Up All? option to be available. Copy a Group Policy Object with the Group Policy Management Console (GPMC) You can copy a Group Policy object (GPO) either by using the drag-and-drop method or right-click method. Applies To: Windows 8, Windows Server 2008 R2, Windows Server 2012 [http://technet.microsoft.com/en-us/library/cc785343\(v=WS.10\).aspx](http://technet.microsoft.com/en-us/library/cc785343(v=WS.10).aspx) <http://technet.microsoft.com/en-us/library/cc733107.aspx>

QUESTION 99 Your network contains four Network Policy Server (NPS) servers named Server1, Server2, Server3, and Server4. Server1 is configured as a RADIUS proxy that forwards connection requests to a remote RADIUS server group named Group1. You need to ensure that Server2 and Server3 receive connection requests. Server4 must only receive connection requests if both Server2 and Server3 are unavailable. How should you configure Group1? A. Change the Weight of Server4 to 10. B. Change the Weight of Server2 and Server3 to 10. C. Change the Priority of Server2 and Server3 to 10. D. Change the Priority of Server4 to 10. Answer: D Explanation: During the NPS proxy configuration process, you can create remote RADIUS server groups and then add RADIUS servers to each group. To configure load balancing, you must have more than one RADIUS server per remote RADIUS server group. While adding group members, or after creating a RADIUS server as a group member, you can access the Add RADIUS server dialog box to configure the following items on the Load Balancing tab: Priority. Priority specifies the order of importance of the RADIUS server to the NPS proxy server. Priority level must be assigned a value that is an integer, such as 1, 2, or 3. The lower the number, the higher priority the NPS proxy gives to the RADIUS server. For example, if the RADIUS server is assigned the highest priority of 1, the NPS proxy sends connection requests to the RADIUS server first; if servers with priority 1 are not available, NPS then sends connection requests to RADIUS servers with priority 2, and so on. You can assign the same priority to multiple RADIUS servers, and then use the Weight setting to load balance between them. Weight. NPS uses this Weight setting to determine how many connection requests to send to each group member when the group members have

the same priority level. Weight setting must be assigned a value between 1 and 100, and the value represents a percentage of 100 percent. For example, if the remote RADIUS server group contains two members that both have a priority level of 1 and a weight rating of 50, the NPS proxy forwards 50 percent of the connection requests to each RADIUS server. Advanced settings. These failover settings provide a way for NPS to determine whether the remote RADIUS server is unavailable. If NPS determines that a RADIUS server is unavailable, it can start sending connection requests to other group members. With these settings you can configure the number of seconds that the NPS proxy waits for a response from the RADIUS server before it considers the request dropped; the maximum number of dropped requests before the NPS proxy identifies the RADIUS server as unavailable; and the number of seconds that can elapse between requests before the NPS proxy identifies the RADIUS server as unavailable. The default priority is 1 and can be changed from 1 to 65535. So changing server 2 and 3 to priority 10 is not the way to go.



[http://technet.microsoft.com/en-us/library/dd197433\(WS.10\).aspx](http://technet.microsoft.com/en-us/library/dd197433(WS.10).aspx) QUESTION 100 Your network contains an Active Directory domain named contoso.com. The domain contains a server named Server1 that runs Windows Server 2012 R2. Server1 has the DHCP Server server role installed. The network contains 400 client computers that run Windows 8. All of the client computers are joined to the domain and are configured DHCP clients. You install a new server named Server2 that runs Windows Server 2012 R2. On Server2, you install the Network Policy Server role service and you configure Network Access Protection (NAP) to use the DHCP enforcement method. You need to ensure that Server1 only provides a valid default gateway to computers that pass the system health validation. Which two actions should you perform? (Each correct answer presents part of the solution. Choose two.) A. From the DHCP console, configure the 016 Swap Server option. B. From the DHCP console, create a new policy. C. From the NAP Client Configuration console, enable the DHCP Quarantine Enforcement Client. D. From the DHCP console, enable NAP on all scopes. E. From Server Manager, install the Network Policy Server role service. Answer: DE Explanation: D: The administrator must define the following settings on the NAP DHCP server: / (D) NAP-enabled scopes: In order to use a DHCP scope with NAP, you must enable it specifically for NAP in scope properties under NAP settings. / Default NAP class: You must configure any required scope options for computers that are noncompliant with health requirements. A default gateway is not provided to noncompliant computers regardless of whether the 003 Router option is configured here. / Remote RADIUS server groups: If connection requests are forwarded from the DHCP server to a NAP health policy server on another computer, you must configure the NPS service on the NAP DHCP server to forward connection requests to the NAP health policy server. This setting is not required if the NAP DHCP server is also the NAP health policy server. / Default user class: You must configure any required scope options for computers that are compliant with health requirements.: The NAP DHCP server is a server running Windows Server 2008 or Windows Server 2008 R2 (or Windows 2012) with the DHCP server role installed and running. Additionally, if this server is not also the NAP health policy server, it must have the NPS role service installed (E), running, and configured to forward connection requests to the NAP health policy server. The NAP DHCP server restricts noncompliant client access by providing a limited IP address configuration to computers that do not meet health requirements. A limited access configuration has a subnet mask of 255.255.255.255 and no default gateway. Static host routes are provisioned to provide access to the DHCP server and any

servers that have been added to remediation server groups on the NAP health policy server. Reference: DHCP Enforcement Configuration Braindump2go Guarantee: Pass-Certification 70-411 offers absolute risk free investment opportunity, values your time and money! Braindump2go latest 70-411 Real Exam Dumps - Your success in 70-411 Exam is certain! Your belief in our 70-411 Exam Dumps is further strengthened with 100% Money Back Promise from Braindump2go!

Administering Windows Server 2012 R2



Product Description Exam Number

Exam Number/Code: 70-411

"Administering Windows Server 2012 R2 Exam Certification. With the complete collection of questions assembled to take you through 322 Q&As to resources, you will cover every field and category your successful Microsoft Certification.

Questions and Answers : 322 Q&As

Updated: Sep 14, 2015

~~\$420.00~~ **\$99.99**

[PDF DEMO](#)

[CHECK OUT](#)

Printable PDF **Premium VCE +**

FREE DOWNLOAD: NEW UPDATED 70-411 PDF Dumps & VCE Dumps from Braindump2go:
<http://www.braindump2go.com/70-411.html> (322 Q&As)