

## [FREE] Download Updated 70-410 Exam Dumps from Braindump2go (231-240)

**MICROSOFT OFFICIAL: New Updated 70-410 Exam Questions from Braindump2go 70-410 pdf dumps and 70-410 vce dumps! Welcome to download the newest Braindump2go 70-410 vce&pdf dumps:** <http://www.braindump2go.com/70-410.html> (471 Q&As) Microsoft 70-410 Exam Questions has already been updated recently! Braindump2go Provide you the Latest 70-410 Exam Dumps: 70-410 PDF and 70-410 VCE! Braindump2go helps you keep in step with Microsoft Official Exam Center! Exam Code: 70-410 Exam Name Installing and Configuring Windows Server 2012 Certification Provider: Microsoft Corresponding Certifications: MCSA, MCSA: Windows Server 2012, MCSE, MCSE: Desktop Infrastructure, MCSE: Private Cloud, MCSE: Server Infrastructure Keywords: 70-410 Dumps, 70-410 Exam Questions, 70-410 VCE, 70-410 VCE Free, 70-410 PDF, 70-410 Lab Manual PDF, 70-410 Practice Exams, 70-410 Practice Tests, 70-410 Installing and Configuring Windows Server 2012

Installing and Configuring Windows Server 2012

410



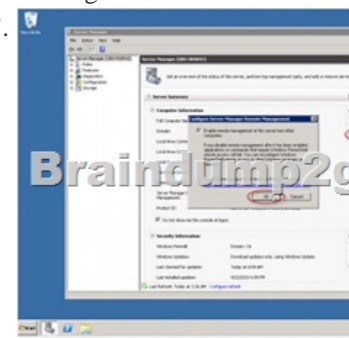
**Product Description**  
**Exam Number/Code:** 70-410  
"Installing and Configuring Windows Server 2012" is a Microsoft Certification exam. This product has assembled to help you prepare for exam resources, you can find more information for your successful preparation.

**Questions and Answers : 471 Q&As**  
Updated: Sep 03, 2015  
~~\$129.99~~ **\$99.99**

[PDF DEMO](#)  
[CHECK OUT](#)

**Printable PDF**

**QUESTION 231** Your network contains an Active Directory domain named contoso.com. The domain contains two servers named Server1 and Server2. Server1 runs Windows Server 2012 R2. Server2 runs Windows Server 2008 R2 Service Pack 1 (SP1) and has the DHCP Server server role installed. You need to manage DHCP on Server2 by using the DHCP console on Server1. What should you do first? A. From Server Manager on Server2, enable Windows Remote Management. B. From a command prompt on Server2, run winrm.exe. C. From Server Manager on Server1, install a feature. D. From the Microsoft Management Console on Server1, add a snap-in. Answer: A Explanation: How do you enable remote management. Assuming the remote server is all set up and prepared to enter production, first, open Server Manager on the remote server. Click on the "Configure Server Manager for Remote Management" link. Select the "Enable remote management of this server from other computers". Click "Ok".



Note: \* You can use Server Manager to manage remote servers that are running Windows Server 2008 and Windows Server 2008 R2, but the following updates are required to fully manage these older operating systems. / Windows Management Framework 3.0 / Performance Updates \* Windows Server 2008 R2, unlike Windows Server 2008 RTM, has a nice feature that allows you to remotely manage it, from another server or from a Windows 7 workstation, by using Server Manager. \* The tasks that you can perform remotely by using Server Manager include: View Windows automatic updating status Run Best Practices Analyzer scans on roles. View or change Windows Firewall information View and manage roles Manage installed services roles View Internet Explorer Advanced Security Configuration settings (IE ESC) Configure Windows Error Reporting View or change Windows Customer Experience Improvement Program (CEIP) status Reference: Configure Remote Management in Server Manager **QUESTION 232**

Your network contains a production Active Directory forest named contoso.com and a test Active Directory forest named contoso.test. A trust relationship does not exist between the forests. In the contoso.test domain, you create a backup of a Group Policy object (GPO) named GPO1. You transfer the backup of GPO1 to a domain controller in the contoso.com domain. You need to create a GPO in contoso.com based on the settings of GPO1. You must achieve this goal by using the minimum amount of administrative effort. What should you do? A. From Group Policy Management, right-click the Group Policy Objects container, and then click Manage Backups.B. From Group Policy Management, right-click the Starter GPOs container, and then click Manage Backups.C. From Group Policy Management, create a new starter GPO. Right-click the new starter GPO, and then click Restore from Backup.D. From Group Policy Management, create a new GPO. Right-click the new GPO, and then click Import Settings.E. From Windows PowerShell, run the Copy-GPOcmdlet and the Restore-GPOcmdlet.F. From Windows PowerShell, run the New-GPOcmdlet and the Import-GPOcmdlet.G. From Windows PowerShell, run the New-GPOcmdlet and the Restore-GPOcmdlet.H. From Windows PowerShell, run the Get-GPOcmdlet and the Copy-GPOcmdlet. Answer: DFEExplanation: The New-GPO cmdlet creates a new GPO with a specified name. By default, the newly created GPO is not linked to a site, domain, or organizational unit (OU). The Import-GPO cmdlet imports the settings from a GPO backup into a specified target GPO. The target GPO can be in a different domain or forest than that from which the backup was made and it does not have to exist prior to the operation. The Restore-GPO cmdlet restores a GPO backup to the original domain from which it was saved. If the original domain is not available, or if the GPO no longer exists in the domain, the cmdlet fails.

[http://technet.microsoft.com/en-us/library/cc781458\(v=WS.10\).aspx](http://technet.microsoft.com/en-us/library/cc781458(v=WS.10).aspx) <http://technet.microsoft.com/en-us/library/hh967461.aspx>  
<http://technet.microsoft.com/en-us/library/ee461050.aspx> <http://technet.microsoft.com/en-us/library/ee461044.aspx>  
[http://blogs.technet.com/b/askpfeplat/archive/2012/11/04/windows-server-2012-the-new-and-](http://blogs.technet.com/b/askpfeplat/archive/2012/11/04/windows-server-2012-the-new-and-improved-group-policy-management-console.aspx)

[improved-group-policy-management-console.aspx](http://blogs.technet.com/b/askpfeplat/archive/2012/11/04/windows-server-2012-the-new-and-improved-group-policy-management-console.aspx) QUESTION 233 You work as an administrator at L2P.com. The L2P.com network consists of a single domain named L2P.com. All servers on the L2P.com network have Windows Server 2012 R2 installed. You have received instructions to convert a basic disk to a GPT disk. Which of the following is TRUE with regards to GPT disks? (Choose all that apply.) A. To convert a basic disk to a GPT disk, the disk must not contain any partitions or volumes.B. You can convert a basic disk to a GPT disk, regardless of partitions or volumes.C. GPT is required for disks larger than 2 TB.D. GPT is required for disks smaller than 2 TB.E. The GPT partition style can be used on removable media.F. GPT disks make use of the standard BIOS partition table. Answer: ACEExplanation: A. For a drive to be eligible for conversion to dynamic, all basic data partitions on the drive must be contiguous C. GPT allows a much larger partition size greater than 2 terabytes (TB) D. 2 terabytes is the limit for MBR disks.E. Dynamic disks are not supported on portable computers, removable disks, detachable disks that use USB or IEEE 1394 interfaces F. Windows only supports booting from a GPT disk on systems that contain Unified Extensible Firmware Interface (UEFI) boot firmware. Master boot record (MBR) disks use the standard BIOS partition table. GUID partition table (GPT) disks use unified extensible firmware interface (UEFI). One advantage of GPT disks is that you can have more than four partitions on each disk. GPT is also required for disks larger than 2 terabytes. Portable computers and removable media. Dynamic disks are not supported on portable computers, removable disks, detachable disks that use Universal Serial Bus (USB) or IEEE 1394 (also called FireWire) interfaces, or on disks connected to shared SCSI buses. If you are using a portable computer and right-click a disk in the graphical or list view in Disk Management, you will not see the option to convert the disk to dynamic. Dynamic disks are a separate form of volume management that allows volumes to have noncontiguous extents on one or more physical disks. Dynamic disks and volumes rely on the Logical Disk Manager (LDM) and Virtual Disk Service (VDS) and their associated features. These features enable you to perform tasks such as converting basic disks into dynamic disks, and creating fault-tolerant volumes. To encourage the use of dynamic disks, multi-partition volume support was removed from basic disks, and is now exclusively supported on dynamic disks. GPT disks can be converted to MBR disks only if all existing partitioning is first deleted, with associated loss of data. Q. What happens when a basic disk is converted to dynamic? A. For a drive to be eligible for conversion to dynamic, all basic data partitions on the drive must be contiguous. If other unrecognized partitions separate basic data partitions, the disk cannot be converted. This is one of the reasons that the MSR must be created before any basic data partitions. The first step in conversion is to separate a portion of the MSR to create the configuration database partition. All non-bootable basic partitions are then combined into a single data container partition. Boot partitions are retained as separate data container partitions. This is analogous to conversion of primary partitions. Windows XP and later versions of the Windows operating system differs from Windows 2000 in that basic and extended partitions are preferentially converted to a single 0x42 partition, rather than being retained as multiple distinct 0x42 partitions as on Windows 2000. <http://technet.microsoft.com/en-us/library/cc725671.aspx>  
<http://msdn.microsoft.com/en-us/library/windows/desktop/aa363785%28v=vs.85%29.aspx>  
<http://msdn.microsoft.com/en-us/library/windows/hardware/gg463525.aspx>

<http://technet.microsoft.com/en-us/library/cc757696.aspx><http://technet.microsoft.com/en-us/library/cc776315.aspx> QUESTION 234 Server1 runs Windows Server 2012 R2 and is installed as an FTP server. Client use App1 to connect to Server1 for FTP. App1 use TCP port 21 for control and a dynamic port for data. You have allowed port 21 in firewall. What you should next do to allow clients to use App1 to connect to server1 using ftp. A. At Server1 allow firewall rule of outbound B. At Server1 allow firewall rule of inbound C. Netsh advfirewall domain profile state off D. Netsh advfirewall set global StatefulFtp enable Answer: D Explanation: Set global statefulftp Configures how Windows Firewall with Advanced Security handles FTP traffic that uses an initial connection on one port to request a data connection on a different port. This affects both active and passive FTP.

#### FTP Publishing Service

FTP Publishing Service provides FTP connectivity. By default, the FTP control port is 21. However, you can configure the service through the Internet Information Services (IIS) Manager snap-in. The default data port (that is used for data transfer) is automatically set to one port less than the control port. Therefore, if you configure the control port to be port 4130, most FTP clients use passive mode FTP. This means that the client first connects to the control port. Next, the FTP server assigns a high TCP port between ports 1025 and 5000. The second connection to the FTP server for transferring data. You can configure the range of high ports used for data transfer.

System Information: Microsoft Windows 7

Application protocol	Protocol	Ports
FTP control	TCP	21
FTP default data	TCP	20
Randomly allocated high TCP ports	TCP	random port number between 1024 - 65535 random port number between 49152 - 65535 <sup>1</sup>

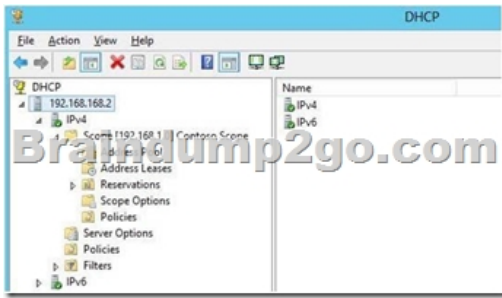
<sup>1</sup> This is the range in Windows Server 2012, Windows 8, Windows Server 2008 R2, Windows 7, Windows Vista.

<http://technet.microsoft.com/en-us/library/cc771920%28v=ws.10%29.aspx>

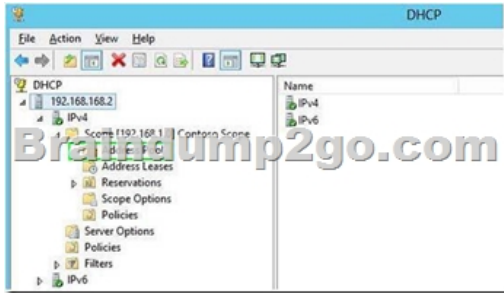
<http://support.microsoft.com/kb/832017/en-us#method20> QUESTION 235 You have a server named Server1 that runs Windows Server 2012 R2. You plan to enable Hyper-V Network Visualization on Server1. You need to install the Windows Network Virtualization Filter Driver on Server1. Which Windows PowerShell cmdlet should you run? A. Set-NetVirtualizationGlobal B. Set-NetAdapterVmq C. Add-WindowsFeature D. Enable-NetAdapterBinding Answer: D Explanation: Hyper-V Network Virtualization runs multiple virtual networks on a physical network. And each virtual network operates as if it is running as a physical network. The Set-NetAdapter cmdlet sets the basic properties of a network adapter such as virtual LAN (VLAN) identifier (ID) and MAC address. Thus if you add the binding parameter to the command then you will be able to install the Windows Network Virtualization Filter Driver. Step one: Enable Windows Network Virtualization (WNV). This is a binding that is applied to the NIC that your External Virtual Switch is bound to. This can be a physical NIC, it can be an LBFO NIC team. Either way, it is the network adapter that your External Virtual Switch uses to exit the server. This also means that if you have multiple virtual networks or multiple interfaces that you can pick and choose and it is not some global setting. If you have one External Virtual Switch this is fairly easy: \$vSwitch = Get-VMSwitch -SwitchType External # Check if Network Virtualization is bound # This could be done by checking for the binding and seeing if it is enabled ForEach-Object - InputObject \$vSwitch {if ((Get-NetAdapterBinding -ComponentID "ms\_netwnv" - InterfaceDescription \$\_.NetAdapterInterfaceDescription).Enabled -eq \$false) { # Lets enable it Enable-NetAdapterBinding -InterfaceDescription \$\_.NetAdapterInterfaceDescription - ComponentID "ms\_netwnv" } }

QUESTION 236 A company has a forest with 4 sites. Subnets are as follows:- MainOffice 172.16.1.0 Subnet: 255.255.255.0 Gateway 172.16.1.254- Site1 192.168.12.0 Subnet: 255.255.255.0- Site 2 192.168.13.0 Subnet: 255.255.255.0- Site 3 192.168.14.0 Subnet: 255.255.255.0- Site 4 192.168.15.0 Subnet: 255.255.255.0 You add a new server to the MainOffice and it needs to be able to communicate to all sites. Which route command would you run? A. route add -p 192.168.8.0 netmask 255.255.252.0 172.16.1.254 B. route add -p 192.168.0.0 netmask 255.255.248.0 172.16.1.254 C. route add -p 192.168.12.0 netmask 255.255.252.0 172.16.1.254 D. route add -p 192.168.12.0 netmask 255.255.240.0 172.16.1.254 Answer: C

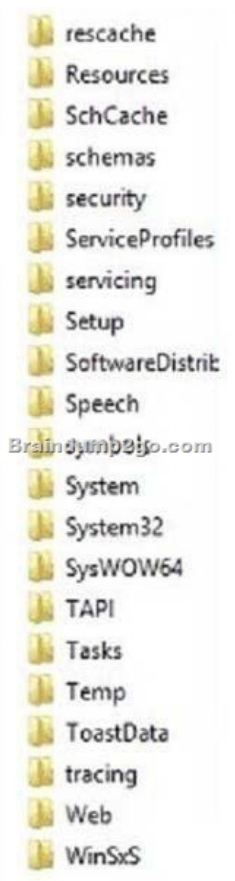
QUESTION 237 Server 1 and Server2 host a load-balanced Application pool named AppPool1. You need to ensure that AppPool1 uses a group Managed Service Account as its identity. Which 3 actions should you perform? A. Install a domain controller that runs Windows Server 2012 R2, Run the New- ADServiceAccount cmdlet, Modify the settings of AppPool1. B. Configure the Security settings of the contoso.com zone. C. Add a second legacy network adapter, and then run the Set-VMNetworkAdapter cmdlet. D. From Windows Powershell, run Get-DNSServerDiagnostics. Answer: A Explanation: For the application pool to use a group Managed Service account as its identity you will have to make sure that there is a domain controller where you can add the account and then modify the application pool accordingly. Thus you should use the New- ADServiceAccount on the domain controller that will create a new Active Directory service account. QUESTION 238 Hotspot Question You run a Windows Server 2012 R2 and implementing 3 new printers in a warehouse. You need to make an exclusion for these IP addresses within DHCP server. Select the location where would configure at the DHCP console?



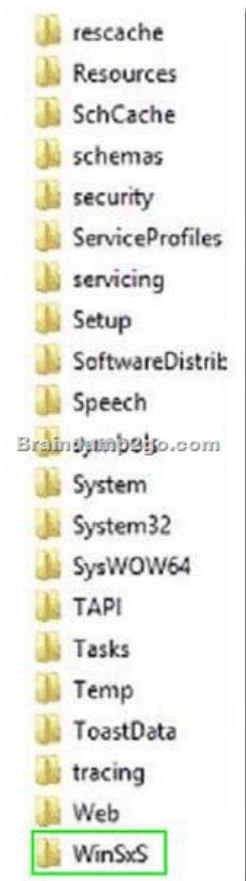
Answer:



Explanation: <http://technet.microsoft.com/en-us/library/cc737978%28v=ws.10%29.aspx> QUESTION 239 Hotspot Question You have a Server Core 2012 installation and all roles and features removed. The server does not have access to Windows Update. You mount the network volume containing the installation files for Server 2012. You need to install DNS and DHCP server role. Which directory do you reference for installing?



Answer:



Explanation:

<http://blogs.technet.com/b/askpfplat/archive/2013/02/24/how-to-reduce-the-size-of-the-winsxs-directory-and-free-up-disk-space-on-windows-server-2012-using-features-on-demand.aspx> QUESTION 240 Server1 runs Windows Server 2012 R2 and is installed as an FTP server. Client use App1 to connect to Server1 for FTP. App1 use TCP port 21 for control and a dynamic port for data. You have allowed port 21 in firewall. What you should next do to allow clients to use App1 to connect to server1 using ftp. A. At Server1 allow firewall rule of outbound B. At Server1 allow firewall rule of inbound C. netsh advfirewall domain profile state off D. netsh advfirewall set global StatefulFtp enable Answer: D Explanation: Set global stateful ftp Configures how Windows Firewall with Advanced Security handles FTP traffic that uses an initial connection on one port to request a data connection on a different port. This affects both active and passive FTP.

**FTP Publishing Service**

FTP Publishing Service provides FTP connectivity. By default, the FTP control port is 21. However, you can configure this system service through the Internet Information Services (IIS) Manager snap-in. The default data (that is used for active mode FTP) port is automatically set to one port less than the control port. Therefore, if you configure the control port to port 4131, the default data port is port 4130. Most FTP clients use passive mode FTP. This means that the client first connects to the FTP server by using the control port. Next, the FTP server assigns a high TCP port between ports 3025 and 5000. Then, the client opens a second connection to the FTP server for transferring data. You can configure the range of high ports by using the IS metabase.


Application protocol	Protocol	Ports
FTP control	TCP	21
FTP default data	TCP	20
Randomly allocated high TCP ports	TCP	random port number between 1024 - 65535 random port number between 49152 - 65535 <sup>1</sup>

<sup>1</sup> This is the range in Windows Server 2012, Windows 8, Windows Server 2008 R2, Windows 7, Windows Server 2008, and Windows Vista.

<http://technet.microsoft.com/en-us/library/cc771920%28v=ws.10%29.aspx>  
<http://support.microsoft.com/kb/832017/en-us#method20> 100% 70-410 Complete Success & Money Back Guarantee! By utilizing Braindump2go high quality Microsoft 70-410 Exam Dumps Products, You can surely pass 70-410 certification 100%! Braindump2go also offers 100% money back guarantee to individuals in case they fail to pass Microsoft 70-410 in one attempt.



## Installing and Configuring Windows Server 2012 R2 Exam: 70-410



**Product Description Exam Number/Code: 70-410**

**Exam Number/Code: 70-410**

"Installing and Configuring Windows Server 2012 R2 Exam", also known as 70-410 exam, is a Microsoft Certification. With the complete collection of questions and answers, Braindump2go has assembled to take you through 471 Q&As to your 70-410 Exam preparation. In the 70-410 exam resources, you will cover every field and category in Microsoft MCSA helping to ready you for your successful Microsoft Certification.

**Questions and Answers : 471 Q&As**

Updated: Sep 03, 2015

~~\$120.00~~ **\$99.99**

[PDF DEMO](#)

[CHECK OUT](#)

**Printable PDF**    **Premium VCE + VCE Simulator**

**70-410 PDF Dumps & 70-410 VCE Dumps Full Version Download(471q):** <http://www.braindump2go.com/70-410.html>