

[FREE] Braindump2go Free 70-662 Dumps VCE Download (191-200)

MICROSOFT NEWS: 70-662 Exam Questions has been Updated Today! Get Latest 70-662 VCE and 70-662 PDF Instantly! Welcome to Download the Newest Braindump2go 70-662 VCE&70-662 PDF Dumps:

<http://www.braindump2go.com/70-662.html> (507 Q&As) Do you want to pass Microsoft 70-662 Exam ? If you answered YES, then look no further. Braindump2go offers you the best 70-662 exam questions which cover all core test topics and certification requirements. All REAL questions and answers from Microsoft Exam Center will help you be a 70-662 certified! Exam Code: 70-662 Exam Name TS: Microsoft Exchange Server 2010, Configuring Certification Provider: Microsoft Corresponding Certifications: MCITP, MCITP: Enterprise Messaging Administrator on Exchange 2010, MCTS, MCTS: Microsoft Exchange Server 2010, Configuring 70-662 Dumps, 70-662 PDF, 70-662 PDF eBook, 70-662 Braindump, 70-662 Study Guide, 70-662 Book, 70-662 Practice Test, 70-662 Dumps PDF, 70-662 VCE, 70-662 VCE Dumps, 70-662 Valid Dumps, 70-662 Exam Questions Free, 70-662 Dumps, 70-662 Free Dumps, 70-662 Questions and Answers Free, 70-662 Braindump PDF, 70-662 Braindump VCE, 70-662 Preparation

TS: Microsoft Exchange Server 2010, Configuring: 70-662



Questions and Answers : 507 Q&As

Updated: Jan 02, 2016

~~\$429.99~~ **\$99.99**

PDF DEMO

CHECK OUT

Product Description Exam Number/Code: 70-662

Exam Number/Code: 70-662

"TS: Microsoft Exchange Server 2010, Configuring", also known as 70-662 exam, is a Microsoft Certification. With the complete collection of questions and answers, Braindump2go has assembled to take you through 507 Q&As to your 70-662 Exam preparation. In the 70-662 exam resources, you will cover every field and category in Microsoft MCITP helping to ready you for your successful Microsoft Certification.

Free Demo Download

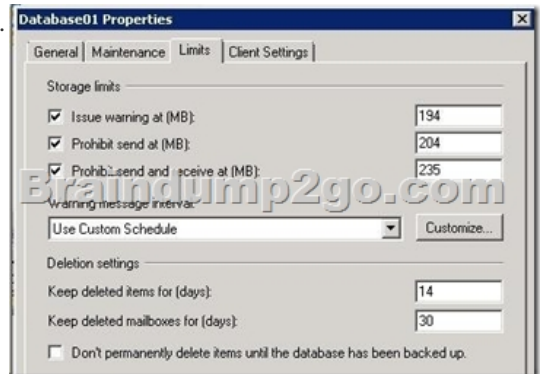
Braindump2go offers free demo for 70-662 exam (TS: Microsoft Exchange Server 2010, Configuring). You can check out the interface, question quality and usability of our practice exams before you decide to buy it.

Printable PDF **Premium VCE + VCE Simulator**

QUESTION 191 You have an Exchange organization. All servers in the organization have Exchange Server 2010 SP1 installed. The organization contains a database availability group (DAG) named DAG1. DAG1 contains two Mailbox server named Server1 and Server2. Five databases are replicated in DAG1. You need to install Exchange rollup updates on Server1. The solution must not prevent users from accessing their mailboxes. What should you do first? A. run the Set-DatabaseAvailabilityGroup cmdlet, and then enable Datacenter Activation Coordination for DAG1. B. run the Set-MailboxDatabase cmdlet, and then configure all mailbox database copies as lagged copies. C. Run the Suspend-MailboxDatabaseCopy cmdlet, and then switch over all mailbox databases to Server2. D. run the Update-MailboxDatabaseCopy cmdlet, and then modify the mailbox database Activation preference. Answer: C Explanation: In situations where you have a planned outage/maintenance window or if you perhaps need to seed a database, the first step is to suspend replication for the involved database(s). This can be done both via the Exchange Management Console (EMC) and the Exchange Management Shell (EMS). To do so via the EMC, you simply right-click on the respective database copy/copies and select suspend in the context menu. To do the same via the EMS, you can use the following command:
Suspend-MailboxDatabaseCopy-Identity MDB02E14EX02

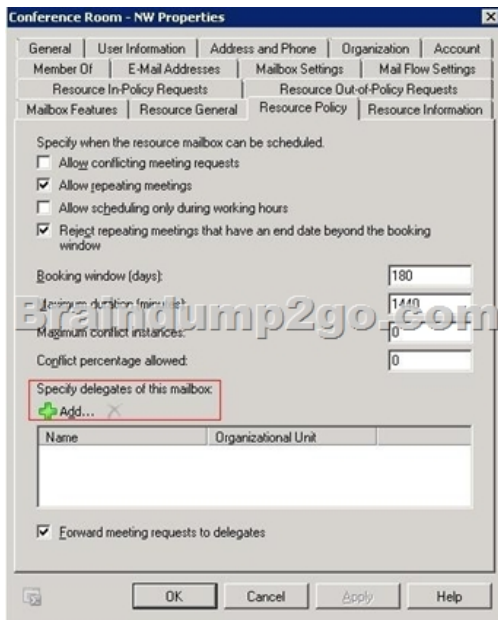
http://www.msexchange.org/articles_tutorials/exchange-server-2010/high-availabilityrecovery/uncoveringexchange-2010-database-availability-groups-dags-part4.html QUESTION 192 You Deploy and Exchange organization. All Servers in the organization have Exchange Server 2010 SP1 installed. The organization contains two Hub Transport servers. The network contains two Active Directory sites named site1 and site2. Each site contains one hub transport server. Each site has a direct connection to the internet. You need to configure message routing for the organization to meet the following requirements:- E-mail messages to a SMTP domain named nwtrader.com must be delivered from site2. - IF site2 is unavailable, e-mail messages sent to nwtraders.com must be delivered from site1. - E-mail messages sent to all other SMTP domains must be delivered from site1 only. What should you do? A. Create two Send connectors. Assign one Hub Transport server as a source server to each Send connector. Configure the connectors as Scoped Send connectors. B. Create one Send connector. Assign both Hub Transport servers as source servers. Configure the connector as a Scoped Send connector. C. Create one Send connector. Assign both Hub Transport servers as source servers. Configure the address spaces for the connector, and then configure the costs for the address spaces. D. Create two Send connectors.

Assign one Hub Transport server as the source server to each Send connector. Configure the address spaces for each connector.
Answer: DExplanation: You already know from the question you need 2 Send connectors, this rules out 2 answers. There is no need for a Scoped Send connector so this leaves only 1 answer. Reference: <http://technet.microsoft.com/en-us/library/aa998662.aspx> So, what is a scoped send connector? When a send connector has the "scoped" option enabled, the connector can only be used by Hub servers in the same Active Directory site. If it is not selected, the connector can be used by all Hub servers in the environment. This option will only interest Exchange admins who manage large Exchange deployments spanning multiple AD sites, having multiple internet breakout points. It is an option Exchange Architects should be aware of when designing complex Exchange environments. You can change the send connector scope by running the command Set-SendConnector "name" -IsScopedConnector \$true/\$false
QUESTION 193 You have an Exchange organization. All servers in the organization have Exchange Server 2010 Service Pack 1 (SP1) installed. You need to ensure that you can restore a mailbox deleted from a mailbox database if the mailbox was deleted up to six months earlier. The solution must not require a database backup. What should you do? A. From the properties of the mailbox database, modify the maintenance schedule. B. From the properties of a Mailbox server, modify the System Settings. C. From the properties of the mailbox, enable single item recovery. D. From the Exchange Management Shell, run the New-MailboxSearch cmdlet. E. Create a managed custom folder and managed content settings. F. From the properties of the mailbox, enable retention hold. G. From the properties of the mailbox, enable litigation hold. H. From the Exchange Management Shell, run the Export-Mailbox cmdlet. I. From the properties of the mailbox database, select the This database can be overwritten by a restore check box. J. Create a retention policy and a retention tag. K. From the properties of the mailbox database, modify the Deletion Settings. L. From the Exchange Management Shell, run the New-MailboxExportRequest cmdlet. M. From the Exchange Management Shell, run Set-MailboxDatabase -DumpsterStatistics \$true. Answer: K Explanation: Conflicting answers on this one, for me its straight forward, deletion settings on the Limits tab for mailbox databases.

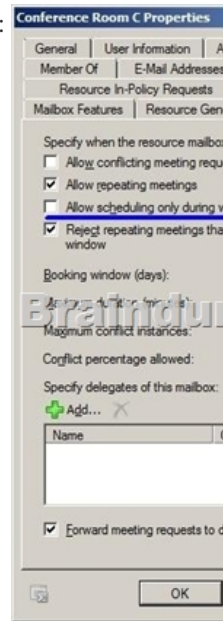


QUESTION 194 You have an Exchange organization. All servers in the organization have Exchange Server 2010 Service Pack 1 (SP1) installed. You need to add a delegate to a room mailbox. What should you do from the properties of the mailbox? A. Configure the Resource Out-of-Policy Requests settings. B. Configure the Mailbox Features settings. C. Configure the Account settings. D. Configure the Mail Flow settings. E. Configure the Resource Information settings. F. Enable the Resource Booking Attendant. G. Configure the Resource In-Policy Requests settings. H. Configure the Resource Policy settings. Answer: H

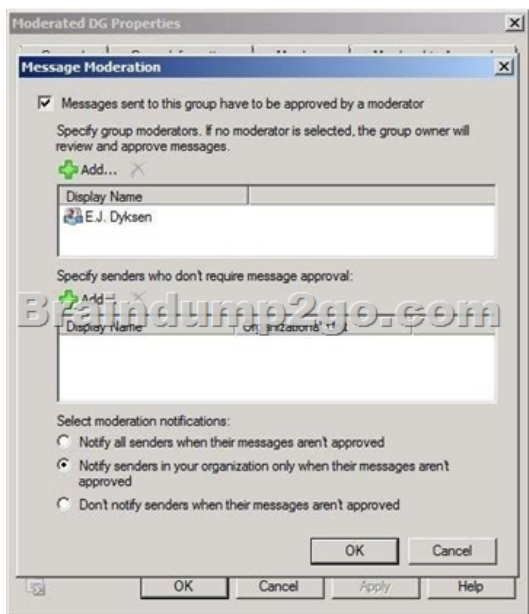
Explanation:



QUESTION 195 You have an Exchange organization. All servers in the organization have Exchange Server 2010 Service Pack 1 (SP1) installed. You need to ensure that an equipment mailbox can be scheduled for meetings that occur during working hours only. What should you do from the properties of the mailbox? A. Configure the Resource Policy settings. B. Configure the Mailbox Features settings. C. Configure the Mail Flow settings. D. Configure the Resource Information settings. E. Configure the Account settings. F. Enable the Resource Booking Attendant. G. Configure the Resource Out-of-Policy Requests settings. H. Configure the Resource In-Policy Requests settings. Answer: A Explanation: Configured on the Resource Policy settings:

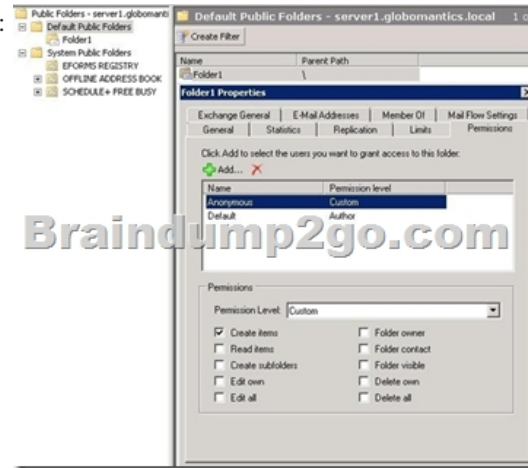


QUESTION 196 You have a hosted Exchange organization. All servers in the organization have Exchange Server 2010 Service Pack 1 (SP1) installed. The organization contains a distribution group named Group1. You need to ensure that a user named User1 can review and approve all messages sent to Group1. What should you do? A. Modify the Managed By list for Group1. B. Modify the mail flow settings for Group1. C. Create a new journal rule and specify User1 as the journal recipient. D. Modify the mail flow settings for User1. Answer: B Explanation: For review and approval, Mail Flow settings then Message Moderation in the group properties



<http://technet.microsoft.com/en-us/library/dd297936.aspx> QUESTION 197 You have an Exchange Server 2010 Service Pack 1 organization named contoso.com. All users have the @contoso.com e-mail address suffix. You discover that both anonymous and authenticated users can post content to a public folder named Folder1 by sending e-mail messages to folder1@contoso.com. You need to prevent all users from posting content to Folder1 by sending e-mail. What should you do? A. From the Exchange Management Shell, modify the permissions of the default Receive connector. B. From the Exchange Management Console, modify

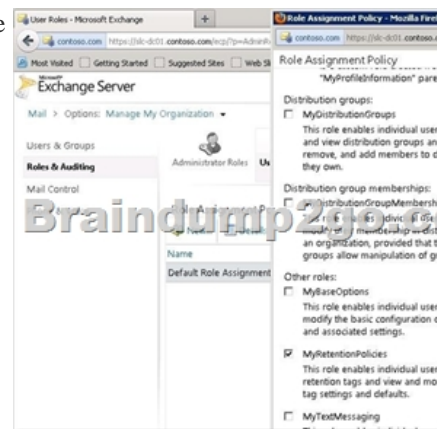
the properties of the Public Folder database.C. From the Public Folder Management Console, modify the properties of Folder1.D. From Outlook Web App (OWA), modify the properties of Folder1. Answer: CExplanation:



QUESTION 198 You have an Exchange Server 2010 organization. The network contains the computers shown in the following table. You need to identify which computers can run Exchange Server 2010 SP1 management tools. Which two computers should you identify? (Each correct answer presents part of the solution. Choose two.)

Computer name	Operating system
Computer1	Windows Vista Ultimate x86 Service Pack 2 (SP2)
Computer2	Windows Vista Business x64 SP2
Computer3	Windows 7 Enterprise x64
Computer4	Windows 7 Business x86
Computer5	Windows XP Professional x64 Service Pack 3 (SP3)

A. Computer1 B. Computer2 C. Computer3 D. Computer4 E. Computer5 Answer: BC QUESTION 199 You have an Exchange Server 2010 Service Pack 1 (SP1) server that hosts a public folder database named PUBLIC. You need to move the transaction log files of PUBLIC. Which cmdlet should you run? A. Set-PublicFolderDatabase B. Set-MailPublicFolder C. Move-DatabasePath D. Move-StorageGroupPath Answer: C Explanation: Move-DatabasePath-Identity PUBLIC-LogFolderPath L:\NewFolder QUESTION 200 You have an Exchange organization. All servers in the organization have Exchange Server 2010 Service Pack 1 (SP1) installed. You create a retention policy and apply the policy to all of the mailboxes in the organization. You need to ensure that users can use personal tags that are not linked to the retention policy. What should you do? A. Run the get-retentionpolicytag | set-retentionpolicytag-retentionenabled \$false command. B. Run the set-retentionpolicytag-identity never delete-type all command. C. Create a Retention Policy Tag that uses the All other folders tag type. D. Run the set-mailbox-identity user1-retentionholdenabled \$true command. E. Modify the User Role Assignment Policy. F. Run the set-retentionpolicytag-identity never delete-type Personal command. G. Create a Retention Policy Tag that uses the Personal Folders tag type. H. Modify the management role groups. I. Run the set-mailbox-identity user1-singleitemrecoveryenabled \$true command. Answer: E Explanation: <http://technet.microsoft.com/en-us/library/dd876897.aspx> Opt-in personal tags Users can use ECP to select additional personal tags not linked to their retention policy Needs MyRetentionPolicies role



Reference: <http://technet.microsoft.com/en-us/library/dd876897.aspx> <http://technet.microsoft.com/en-us/library/dd297955.aspx>

Braindump2go 70-662 Latest Updaed Braindumps Including All New Added 70-662 Exam Questions from Exam Center which Guarantees You Can 100% Success 70-662 Exam in Your First Try Exam!

TS: Microsoft Exchange Server 2010, Configuring: 70-662



Questions and Answers : 507
Q&As

Updated: Jan 02, 2016

~~\$129.99~~ **\$99.99**

[PDF DEMO](#)

[CHECK OUT](#)

Product Description Exam Number/Code: 70-662

Exam Number/Code: 70-662

"TS: Microsoft Exchange Server 2010, Configuring", also known as 70-662 Certification. With the complete collection of questions and answers, Braindump2go assembled to take you through 507 Q&As to your 70-662 Exam preparation resources, you will cover every field and category in Microsoft MCITP help your successful Microsoft Certification.

Free Demo Download

Braindump2go offers free demo for 70-662 exam (TS: Microsoft Exchange Server 2010, Configuring). You can check out the interface, question quality and use the exams before you decide to buy it.

Printable PDF **Premium VCE + VCE Simulator**

FREE DOWNLOAD: NEW UPDATED 70-662 PDF Dumps & 70-662 VCE Dumps from Braindump2go:
<http://www.braindump2go.com/70-662.html> 507 Q&As)