


Free Microsoft 70-411 Practice Tests Questions Download From Braindump2go! (161-170)

MICROSOFT OFFICIAL: New Updated 70-411 Exam Questions from Braindump2go 70-411 PDF Dumps and 70-411 VCE Dumps! Welcome to Download the Newest Braindump2go 70-411 VCE&PDF Dumps:
<http://www.braindump2go.com/70-411.html> (322 Q&As) Braindump2go New Released 70-411 Exam Dumps Questions New Updated Today: Latest 322 Questions and Answers Explanation. Guarantee you 100% Success when you attend Microsoft MCM 70-411 Exam! We update 70-411 Exam Dumps Questions every day and you can come to download our latest 70-411 Practice Tests daily! Exam Code: 70-411 Exam Name Administering Windows Server 2012 Certification Provider: Microsoft Corresponding Certifications: MCSA, MCSA: Windows Server 2012, MCSE, MCSE: Desktop Infrastructure, MCSE: Private Cloud, MCSE: Server Infrastructure Keywords: 70-411 Dumps, 70-411 Microsoft Exam Questions, 70-411 VCE, 70-411 PDF, 70-411 Practice Exams, 70-411 Practice Tests, 70-411 Book, 70-411 Study Guide

Administering Windows Server 2012 R2 Exam: 70-411



Product Description Exam Number/Code: 70-411

Exam Number/Code: 70-411

"Administering Windows Server 2012 R2 Exam", also known as 70-411 exam, is a Microsoft Certification. With the complete collection of questions and answers, Braindump2go has assembled to take you through 322 Q&As to your 70-411 Exam preparation. In the 70-411 exam resources, you will cover every field and category in Microsoft MCSA helping to ready you for your successful Microsoft Certification.

Questions and Answers : 322
Q&As
Updated: Sep 14, 2015
\$420.00 **\$99.99**

[PDF DEMO](#)

[CHECK OUT](#)

Free Demo Download

Braindump2go offers free demo for 70-411 exam (Administering Windows Server 2012 R2 Exam). You can check out the interface, question quality and usability of our practice exams before you decide to buy it.

Printable PDF Premium VCE + VCE Simulator

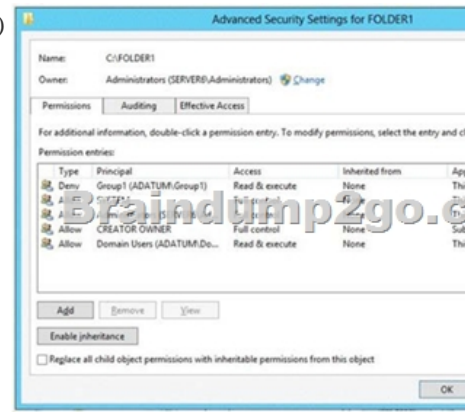
QUESTION 161 Your network contains an Active Directory domain named contoso.com. The domain does not contain a certification authority (CA). All servers run Windows Server 2012 R2. All client computers run Windows 8. You need to add a data recovery agent for the Encrypting File System (EFS) to the domain. Which two actions should you perform? (Each correct answer presents part of the solution. Choose two.)

A. From Windows PowerShell, run Get-Certificate.
B. From the Default Domain Controllers Policy, select Create Data Recovery Agent.
C. From the Default Domain Policy, select Add Data Recovery Agent.
D. From a command prompt, run cipher.exe.
E. From the Default Domain Policy, select Create Data Recovery Agent.
F. From the Default Domain Controllers Policy, select Add Data Recovery Agent.

Answer: AC
Explanation: A. Submits a certificate request to an enrollment server and installs the response or retrieves a certificate for a previously submitted request. C. Add agent to default domain policy [http://technet.microsoft.com/en-us/library/hh848632\(v=wps.620\).aspx](http://technet.microsoft.com/en-us/library/hh848632(v=wps.620).aspx)

[http://technet.microsoft.com/en-us/library/dd875560\(v=ws.10\).aspx#BKMK_proc_dra](http://technet.microsoft.com/en-us/library/dd875560(v=ws.10).aspx#BKMK_proc_dra)

<http://windowsitpro.com/systems-management/how-can-i-add-user-efs-recovery-agent-domain> QUESTION 162 Your network contains an Active Directory domain named adatum.com. All domain controllers run Windows Server 2008 R2. The domain contains a file server named Server6 that runs Windows Server 2012 R2. Server6 contains a folder named Folder1. Folder1 is shared as Share1. The NTFS permissions on Folder1 are shown in the exhibit. (Click the Exhibit button.)



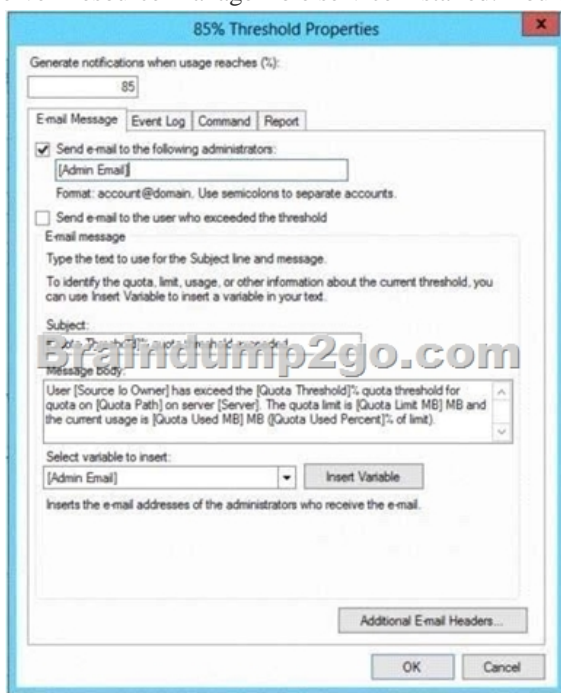
The domain contains two global groups named Group1 and Group2. You need to ensure that only users who are members of both

Group1 and Group2 are denied access to Folder1. Which two actions should you perform? (Each correct answer presents part of the solution. Choose two.) A. Remove the Deny permission for Group1 from Folder1.B. Deny Group2 permission to Folder1.C. Install a domain controller that runs Windows Server 2012 R2.D. Create a conditional expression.E. Deny Group2 permission to Share1.F. Deny Group1 permission to Share1. Answer: ADEExplanation:* Conditional Expressions for Permission Entries Windows Server 2008 R2 and Windows 7 enhanced Windows security descriptors by introducing a conditional access permission entry. Windows Server 2012 R2 takes advantage of conditional access permission entries by inserting user claims, device claims, and resource properties, into conditional expressions. Windows Server 2012 R2 security evaluates these expressions and allows or denies access based on results of the evaluation. Securing access to resources through claims is known as claims-based access control. Claims-based access control works with traditional access control to provide an additional layer of authorization that is flexible to the varying needs of the enterprise environment.

<http://social.technet.microsoft.com/wiki/contents/articles/14269-introducing-dynamicaccess-control-en-us.aspx> QUESTION 163 You have 20 servers that run Windows Server 2012 R2. You need to create a Windows PowerShell script that registers each server in Windows Azure Online Backup and sets an encryption passphrase. Which two PowerShell cmdlets should you run in the script? (Each correct answer presents part of the solution. Choose two.) A. New-OBPolicyB. New-OBRetentionPolicyC. Add-OBFileSpecD. Start-OBRegistrationE. Set OBMachineSetting Answer: DEExplanation:D: Start-OBRegistrationRegisters the current computer with Windows Azure Online Backup using the credentials (username and password) created during enrollment. E: The Set-OBMachineSettingcmdlet sets aOBMachineSetting object for the server that includes proxy server settings for accessing the internet, network bandwidth throttling settings, and the encryption passphrase that is required to decrypt the files during recovery to another server. Incorrect:Not C: TheAdd-OBFileSpeccmdlet adds theOBFileSpecobject, which specifies the items to include or exclude from a backup, to the backup policy (OBPolicyobject). TheOBFileSpecobject can include or exclude multiple files, folders, or volumes. [http://technet.microsoft.com/en-us/library/hh770416\(v=wps.620\).aspx](http://technet.microsoft.com/en-us/library/hh770416(v=wps.620).aspx)

[http://technet.microsoft.com/en-us/library/hh770425\(v=wps.620\).aspx](http://technet.microsoft.com/en-us/library/hh770425(v=wps.620).aspx) <http://technet.microsoft.com/en-us/library/hh770424.aspx> <http://technet.microsoft.com/en-us/library/hh770398.aspx> <http://technet.microsoft.com/en-us/library/hh770409.aspx> QUESTION 164 You have 30 servers that run Windows Server 2012 R2. All of the servers are backed up daily by using Windows Azure Online Backup. You need to perform an immediate backup of all the servers to Windows Azure Online Backup. Which Windows PowerShell cmdlets should you run on each server? A. Start-OBRegistration | Start-OBBackupB. Get-OBPolicy | Start-OBBackupC. Get-WBBackupTarget | Start-WBBackupD. Get-WBPolicy | Start-WBBackup Answer: BEExplanation:A. starts a backup job using a policyB. Registers the current computer to Windows Azure Backup.C. Not using AzureD. Not using Azure[http://technet.microsoft.com/en-us/library/hh770406\(v=wps.620\).aspx](http://technet.microsoft.com/en-us/library/hh770406(v=wps.620).aspx)

<http://technet.microsoft.com/en-us/library/hh770426.aspx> <http://technet.microsoft.com/en-us/library/hh770398.aspx> QUESTION 165 Your network contains an Active Directory domain named contoso.com. The domain contains a server named Server1 that runs Windows Server 2012 R2.Server1 has the File Server Resource Manager role service installed. You configure a quota threshold as shown in the exhibit. (Click the Exhibit button.)



You need to ensure that a user named User1 receives an email notification when the threshold is exceeded. What should you do? A. Configure the File Server Resource Manager Options. B. Modify the members of the Performance Log Users group. C. Create a performance counter alert. D. Create a classification rule. Answer: A Explanation: A. When you create quotas and file screens, you have the option of sending e-mail notifications to users when their quota limit is approaching or after they have attempted to save files that have been blocked. B. Members of this group can manage performance counters, logs and alerts on the server locally and from remote clients without being a member of the Administrators group. C. You can set an alert on a counter, thereby defining that a message be sent, a program be run, an entry made to the application event log, or a log be started when the selected counter's value exceeds or falls below a specified setting. D. File Classification Infrastructure provides insight into your data by automating classification processes so that you can manage your data more effectively. You can classify files and apply policies based on this classification. Example policies include dynamic access control for restricting access to files, file encryption, and file expiration. Files can be classified automatically by using file classification rules or manually by modifying the properties of a selected file or folder. [http://technet.microsoft.com/en-us/library/cc756031\(v=ws.10\).aspx](http://technet.microsoft.com/en-us/library/cc756031(v=ws.10).aspx)

[http://technet.microsoft.com/en-us/library/cc785098\(v=ws.10\).aspx](http://technet.microsoft.com/en-us/library/cc785098(v=ws.10).aspx) <http://technet.microsoft.com/en-us/library/bb490759.aspx> <http://technet.microsoft.com/en-us/library/hh831701.aspx> QUESTION 166 You have a server named Server1 that runs Windows Server 2012 R2. Server1 has the File Server Resource Manager role service installed. Server1 has a folder named Folder1 that is used by the sales department. You need to ensure that an email notification is sent to the sales manager when a File Screening Audit report is generated. What should you configure on Server1? A. A file screen exception. B. A file group. C. A storage report task. D. A file screen. Answer: C Explanation: A. A file screen exception is a special type of file screen that overrides any file screening that would otherwise apply to a folder and all its subfolders in a designated exception path. That is, it creates an exception to any rules derived from a parent folder. B. A file group is used to define a namespace for a file screen, file screen exception, or Files by File Group storage report. C. file screening report will identify individuals or applications that violate file screening policy, To set e-mail notifications and certain reporting capabilities, you must first configure the general File Server Resource Manager options. D. Control the types of files that users can save. <http://technet.microsoft.com/en-us/library/cc730822.aspx>

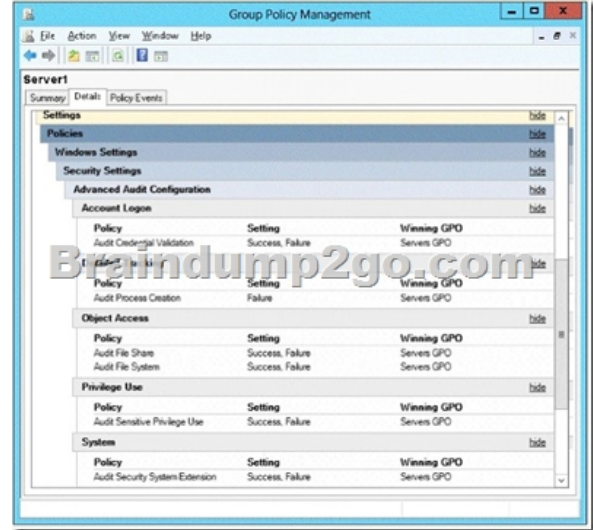
<http://technet.microsoft.com/en-us/library/cc770594.aspx> <http://technet.microsoft.com/en-us/library/cc771212.aspx> <http://technet.microsoft.com/en-us/library/cc732074.aspx> <http://technet.microsoft.com/en-us/library/cc755988.aspx> QUESTION 167 Your network contains an Active Directory domain named contoso.com. The domain contains two servers named Server1 and Server2. Both servers run Windows Server 2012 R2. Both servers have the File and Storage Services server role. The DFS Namespaces role service, and the DFS Replication role service installed. Server1 and Server2 are part of a Distributed File System (DFS) Replication group named Group1. Server1 and Server2 are separated by a low-speed WAN connection. You need to limit the amount of bandwidth that DFS can use to replicate between Server1 and Server2. What should you modify? A. The referral ordering of the namespace. B. The cache duration of the namespace. C. The schedule of the replication group. D. The staging quota of the replicated folder. Answer: C Explanation: A. A referral is an ordered list of targets that a client computer receives from a domain controller or namespace server when the user accesses a namespace root or folder with targets in the namespace. You can adjust how long clients cache a referral before requesting a new one. B. DFS Replication uses staging folders for each replicated folder to act as caches for new and changed files that are ready to be replicated from sending members to receiving members. C. A referral is an ordered list of targets that a client computer receives from a domain controller or namespace server when the user accesses a namespace root or folder with targets. After the client receives the referral, the client attempts to access the first target in the list. If the target is not available, the client attempts to access the next target. D. Scheduling allows less bandwidth by limiting the time interval of the replication. <http://technet.microsoft.com/en-us/library/cc771251.aspx>

<http://technet.microsoft.com/en-us/library/cc754229.aspx> <http://technet.microsoft.com/en-us/library/cc732414.aspx> <http://technet.microsoft.com/en-us/library/cc753923.aspx> QUESTION 168 You have five servers that run Windows Server 2012 R2. The servers have the Failover Clustering feature installed. You deploy a new cluster named Cluster1. Cluster1 is configured as shown in the following table.

Site name	Server name
Site1	Server1 Server2 Server3
Site2	Server4 Server5

Server1, Server2, and Server3 are configured as the preferred owners of the cluster roles. Dynamic quorum management is

disabled. You plan to perform hardware maintenance on Server3. You need to ensure that if the WAN link between Site1 and Site2 fails while you are performing maintenance on Servers, the cluster resource will remain available in Site1. What should you do? A. Add a file share witness in Site1.B. Remove the node vote for Server3.C. Remove the node vote for Server4 and Server5.D. Enable dynamic quorum management. Answer: C QUESTION 169Your network contains an Active Directory domain named contoso.com. The domain contains a file server named Server1 that runs Windows Server 2012 R2. You view the effective policy settings of Server1 as shown in the exhibit. (Click the Exhibit button.)



On Server1, you have a folder named C:Share1 that is shared as Share1. Share1 contains confidential data. A group named Group1 has full control of the content in Share1. You need to ensure that an entry is added to the event log whenever a member of Group1 deletes a file in Share1.What should you configure? A. The Audit File System setting of Servers GPOB. The Sharing settings of C:Share1C. The Security settings of C:Share1D. The Audit File Share setting of Servers GPO Answer: CExplanation:Access to objects, such as files and folders can be audited using the advanced security setting auditing tab on Share1 and adding Group1 and selecting the delete check box [http://technet.microsoft.com/en-us/library/cc753927\(v=ws.10\).aspx](http://technet.microsoft.com/en-us/library/cc753927(v=ws.10).aspx)

<http://social.technet.microsoft.com/Forums/en-US/winservergen/thread/13779c78-0c73-4477-8014-f2eb10f3f10f/> QUESTION 170 You have a server named Server1 that runs Windows Server 2012 R2. Server1 has the File Server Resource Manager role service installed. Server1 has a folder named Folder1 that is used by the human resources department. You need to ensure that an email notification is sent immediately to the human resources manager when a user copies an audio file or a video file to Folder1.What should you configure on Server1? A. A file screenB. A file screen exceptionC. A file groupD. A storage report task Answer: AExplanation:A. Create file screens to control the types of files that users can save, and generate notifications when users attempt to save unauthorized filesB. A file screen exception is a special type of file screen that overrides any file screening that would otherwise apply to a folder and all its subfolders in a designated exception path. That is, it creates an exception to any rules derived from a parent folder.C. File are a group of file classified by extension (i.e. Images: .jpg, .gif, etc..) D. Create reports based on file use <http://technet.microsoft.com/en-us/library/cc732074.aspx> <http://technet.microsoft.com/en-us/library/cc730822.aspx> [http://technet.microsoft.com/en-us/library/cc755988\(v=ws.10\).aspx](http://technet.microsoft.com/en-us/library/cc755988(v=ws.10).aspx)

Braindump2go Offers PDF & VCE Dumps Download for New Released Microsoft 70-411 Exam! 100% Exam Success Guaranteed OR Full Money Back Instantly!

Administering Windows Server 2012 R2



Product Description Exam Num

Exam Number/Code: 70-411

"Administering Windows Server 2012 R2 Exam Certification. With the complete collection of assembled to take you through 322 Q&As to resources, you will cover every field and cater your successful Microsoft Certification.

Questions and Answers : 322 Q&As

Updated: Sep 14, 2015

~~\$420.00~~ **\$99.99**

[PDF DEMO](#)

[CHECK OUT](#)

Printable PDF **Premium VCE**

FREE DOWNLOAD: NEW UPDATED 70-411 PDF Dumps & VCE Dumps from Braindump2go:
<http://www.braindump2go.com/70-411.html> (322 Q&As)