

Free Microsoft 70-410 Practice Tests Questions Download From Braindump2go! (61-70)

MICROSOFT OFFICIAL: New Updated 70-410 Exam Questions from Braindump2go 70-410 pdf dumps and 70-410 vce dumps! Welcome to download the newest Braindump2go 70-410 vce&pdf dumps: <http://www.braindump2go.com/70-410.html> (471 Q&As) New Released Braindump2go Microsoft 70-410 Dumps PDF - Questions and Answers Updated with Microsoft Official Exam Center! Visit Braindump2go and download our 70-410 Exam Questions Now, Pass 70-410 100% at your first time! Exam Code: 70-410 Exam Name Installing and Configuring Windows Server 2012 Certification Provider: Microsoft Corresponding Certifications: MCSA, MCSA: Windows Server 2012, MCSE, MCSE: Desktop Infrastructure, MCSE: Private Cloud, MCSE: Server Infrastructure Keywords: 70-410 Dumps, 70-410 Exam Questions, 70-410 VCE, 70-410 VCE Free, 70-410 PDF, 70-410 Lab Manual PDF, 70-410 Practice Exams, 70-410 Practice Tests, 70-410 Installing and Configuring Windows Server 2012

Installing and Configuring Windows Server 2012 410



Product Description

Exam Number/Code: 70-410

"Installing and Configuring Windows Server 2012" is a Microsoft Certified Professional (MCP) exam. Braindump2go has assembled the best exam resources, including questions and answers, for your successful preparation.

Questions and Answers : 471 Q&As

Updated: Sep 03, 2015

~~\$120.00~~ **\$99.99**

[PDF DEMO](#)

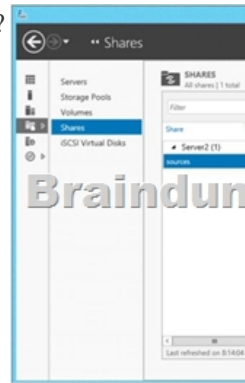
[CHECK OUT](#)

Free Demo Download

Braindump2go offers a free demo download of the 2012 R2 Exam. You can take the exam before you purchase the full version.

Printable PDF

QUESTION 61 You have a server named Server2 that runs Windows Server 2012 R2. You open Server Manager on Server2 as shown in the exhibit. (Click the Exhibit button.) The Everyone group has read share permission and read NTFS permission to Sources. You need to ensure that when users browse the network, the Sources share is not visible. What should you do?

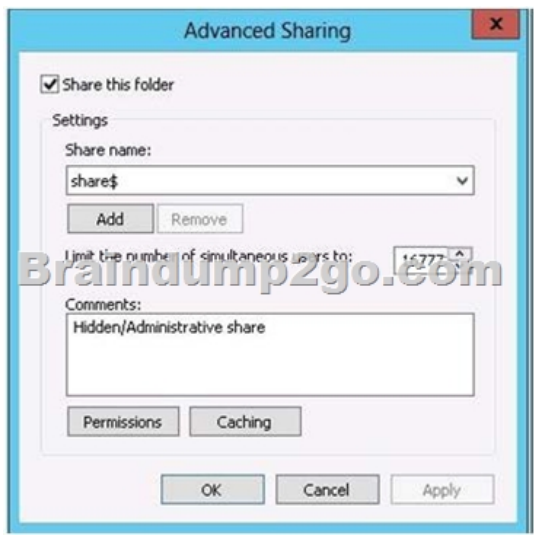


A. From the properties of the Sources folder, remove the Sources share, and then share the Sources folder as Sources\$. B. From the properties of the Sources folder, deny the List Folder Contents permission for the Everyone group. C. From the properties of the Sources share, configure access-based enumeration. D. From the properties of the Sources folder, configure the hidden attribute.

Answer: A

Explanation: A. need to remove the old share, \$ creates a hidden share B. This would deny everyone C. This feature allows users of Windows Server 2003-Based file servers to list only the files and folders to which they have access when browsing content on the file server D. This would hide the physical folder not the share A hidden share is identified by a dollar sign (\$) at the end of the share name Hidden shares are not listed when you look through the shares on a computer or use the "net view" command

Why Use Hidden Shares? Using hidden shares on your network is useful if you do not want a shared folder or drive on the network to be easily accessible. Hidden shares can add another layer of protection for shared files against unauthorized people connecting to your network. Using hidden shares helps eliminate the chance for people to guess your password (or be logged into an authorized Windows account) and then receive access to the shared resource.



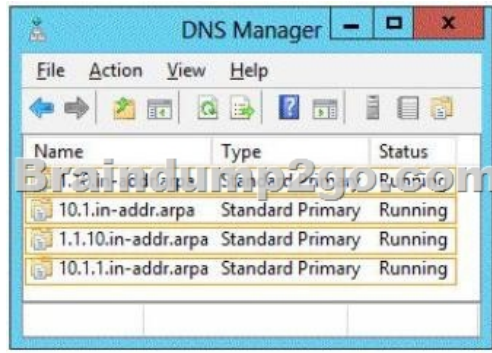
<http://support.microsoft.com/kb/314984>[http://technet.microsoft.com/en-us/library/cc784710\(v=ws.10\).aspx](http://technet.microsoft.com/en-us/library/cc784710(v=ws.10).aspx) QUESTION 62 Your network contains a server named Server1 that runs Windows Server 2012 R2. Server1 has the Print and Document Services server role installed. You connect a new print device to the network. The marketing department and the sales department will use the print device. You need to provide users from both departments with the ability to print to the network print device. The solution must ensure that if there are multiple documents queued to print, the documents from the sales users print before the documents from the marketing users. What should you do on Server1? A. Add two printers. Modify the priorities of each printer and the security settings of each printer B. Add two printers and configure printer pooling C. Add one printer and configure printer pooling D. Add one printer. Modify the printer priority and the security settings Answer: A Explanation:

[http://technet.microsoft.com/en-us/library/cc738090\(v=ws.10\).aspx](http://technet.microsoft.com/en-us/library/cc738090(v=ws.10).aspx) To set different print priority to different groups Open Printers and Faxes. Right-click the printer you want to set, click Properties, and then click the Advanced tab. In Priority, click the up or down arrows, and then click OK. Or, type a priority level, where 1 is the lowest level and 99 is the highest, and then click OK. Click Add Printer to add a second logical printer for the same physical printer. For instructions, see Related Topics. Click the Advanced tab. In Priority, set a priority higher than that of the first logical printer. Instruct the regular group of users to use the first logical printer name and the group with higher priority to use the second logical printer name. Set the appropriate permissions for the different groups. QUESTION 63 Your network contains an Active Directory domain named contoso.com. The network contains a server named Server1 that runs Windows Server 2012 and a server named Server2 that runs Windows Server 2008 R2 Service Pack 1 (SP1). Server1 and Server2 are member servers. You need to ensure that you can manage Server2 from Server1 by using Server Manager. Which two tasks should you perform? (Each correct answer presents part of the solution. Choose two.) A. Install Remote Server Administration Tools on Server1 B. Install Windows Management Framework 3.0 on Server2 C. Install the Windows PowerShell 2.0 engine on Server1 D. Install Microsoft .NET Framework 4 on Server2 E. Install Remote Server Administration Tools on Server2 Answer: B D Explanation: Explanation: Windows Server 2012 can manage Windows Server 2012 R2, Hyper-V Server 2012, Server 2008 SP2 and Server 2008 R2 SP1 These instructions explain how to install: Install the full installation of Microsoft .NET Framework 4.0 (dotNetFx40_Full_setup.exe) or, install Microsoft .NET Framework 4.5 (dotNetFx45_Full_setup.exe) Install Windows Management Framework 3.0 Security Note By default, Server Manager and Windows PowerShell remote management is enabled in Windows Server 2012 R2.

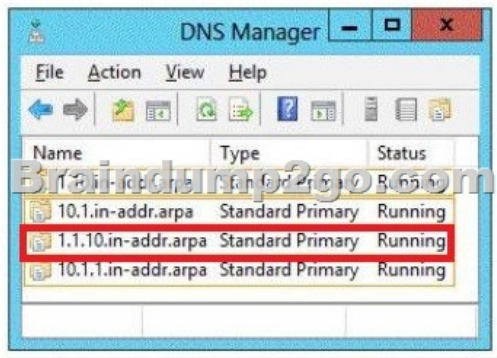


<http://technet.microsoft.com/en-us/library/hh831456.aspx>
<http://blogs.technet.com/b/keithmayer/archive/2012/10/02/managing-windows-server-2008-sp2-and-r2-from-windows-server-2012-server-manager.aspx#.UaSV9djkf8>http://technet.microsoft.com/en-us/library/hh847837.aspx#BKMK_InstallingOnWindows7andWindowsServer2008R2 QUESTION 64 Hotspot Question You have a DNS

server named Server1. Server1 runs Windows Server 2012 R2. The network ID is 10.1.1.0/24. An administrator creates several reverse lookup zones. You need to identify which reverse lookup zone is configured correctly. Which zone should you identify? To answer, select the appropriate zone in the answer area.



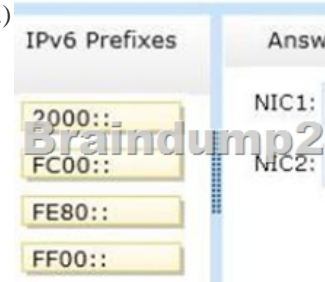
Answer:



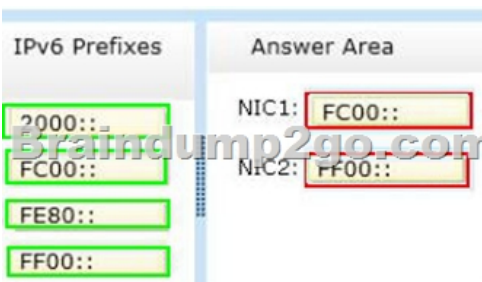
QUESTION 65 Hotspot Question You have a server named Server1. Server1 runs Windows Server 2012 R2. Server1 has two network adapters. Each network adapter must be configured as shown in the following table.

Network adapter name	Required IPv6 address type
NIC1	FC00::
NIC2	Multicast

You need to configure the correct IPv6 address prefix for each network adapter. Which prefix should you select for each network adapter? (To answer, drag the appropriate IPv6 prefix to the correct network adapter in the answer area. Each prefix may be used once, more than once, or not at all. You may need to drag the split bar between panes or scroll to view content.)



Answer:



Explanation:

IPv6 Prefix	Allocation	Reference
0000::/8	Reserved by IETF	[RFC4291] [1] [2] [3] [4] [5]
0100::/8	Reserved by IETF	[RFC4291] 0100::/64 reserved for Discard-Only Address Block [RFC6666] Com
0200::/7	Reserved by IETF	[RFC4291] Deprecated as of December 2004 [RFC4648] Formerly an OSI NSA
0400::/6	Reserved by IETF	[RFC4291]
0800::/5	Reserved by IETF	[RFC4291]
1000::/4	Reserved by IETF	[RFC4291]
2000::/3	Global Unicast	[RFC4291] The IPv6 Unicast space encompasses the entire IPv6 address range registered in [IANA registry, ipv6-unicast-address-assignments] [6] [7]
4000::/3	Reserved by IETF	[RFC4291]
8000::/3	Reserved by IETF	[RFC4291]
fc00::/7	Unique Local Unicast	[RFC4291] For complete registration details, see [IANA registry, iana-ipv6-spec]
fe00::/9	Reserved by IETF	[RFC4291]
fe80::/10	Link-Scoped Unicast	[RFC4291] Reserved by protocol. For authoritative registration, see [IANA regist
fec0::/10	Reserved by IETF	[RFC3873] Deprecated by [RFC3873] in September 2004. Formerly a Site-Local
ff00::/8	Multicast	[RFC4291] IANA assignments from this block are registered in [IANA registry]

<http://www.iana.org/assignments/ipv6-address-space/ipv6-address-space.xml> QUESTION 66 Drag and Drop Question Your company has a main office that contains 225 client computers. The client computers are located on a subnet that uses the network ID of 10.10.1.0/24. The company plans to open two branch offices. The offices will be configured as shown in the following table.

Office name
Branch1
Branch2

You need to select a network prefix for each office to ensure that there are enough IPv4 addresses for each client computer. The solution must minimize the number of unused IP addresses. Which network prefixes should you select? To answer, drag the appropriate network prefix to the correct branch office in the answer area.

Network Prefixes	Answer Area
/24	Branch1 <input type="text" value="Network prefix"/>
/25	Branch2 <input type="text" value="Network prefix"/>
/26	
/27	
/28	

Answer:

Network Prefixes	Answer Area
/24	Branch1 <input type="text" value="Net /26"/> <input type="text" value="fix"/>
/25	Branch2 <input type="text" value="Net /27"/> <input type="text" value="fix"/>
/26	
/27	
/28	

QUESTION 67 Your infrastructure divided in 2 sites. You have a forest root domain and child domain. There is only one DC on site 2 with no FSMO roles. The link goes down to site 2 and no users can log on. What FSMO roles you need on to restore the access? A. Infrastructure master B. RID master C. Domain Naming master D. PDC emulator Answer: D Explanation: D. The PDC emulator is used as a reference DC to double-check incorrect passwords and it also receives new password changes. PDC Emulator is the most complicated and least understood role, for it runs a diverse range of critical tasks. It is a domain-specific role, so exists in the forest root domain and every child domain. Password changes and account lockouts are immediately processed at the PDC Emulator for a domain, to ensure such changes do not prevent a user logging on as a result of multi-master replication delays,

such as across Active Directory sites.multi-master directory concept

[http://technet.microsoft.com/en-us/library/cc773108\(v=ws.10\).aspx](http://technet.microsoft.com/en-us/library/cc773108(v=ws.10).aspx) QUESTION 68 You perform a Server Core Installation of Windows Server 2012 R2 on server named Server1. You need to add a graphical user interface (GUI) to server1. Which tool should you use? A. the Add-WindowsFeature cmdlet B. the Install-Module cmdlet C. the setup.exe command D. the Add-WindowsPackage cmdlet Answer: A Explanation: A. The Add-WindowsFeature cmdlet allows you to install specified roles, role services, and features B. Not a valid cmdlet D. Adds a single .cab or .msu file to a Windows image. Add-WindowsFeature - Allows you to install specified roles, role services, and features



<http://technet.microsoft.com/en-us/library/ee662309.aspx><http://technet.microsoft.com/en-us/library/hh852164.aspx> QUESTION 69 A network technician installs Windows Server 2012 R2 Standard on a server named Server1. A corporate policy states that all servers must run Windows Server 2012 R2 Enterprise. You need to ensure that Server1 complies with the corporate policy. You want to achieve this goal by using the minimum amount of administrative effort. What should you perform? A. a clean installation of Windows Server 2012 R2 B. an upgrade installation of Windows Server 2012 R2 C. online servicing by using Dism D. offline servicing by using Dism Answer: C Explanation: A. Not least effort B. Not least effort C. dism /online /set-edition D. offline would be less ideal and more work ex: DISM /online /Set-

Edition:ServerEnterprise/ProductKey:489J6-VHDMP-X63PK-3K798-CPX3Y Windows Server 2008 R2/2012 contains a command-line utility called DISM (Deployment Image Servicing and Management tool). This tool has many features, but one of those features is the ability to upgrade the edition of Windows in use. Note that this process is for upgrades only and is irreversible. You cannot set a Windows image to a lower edition. The lowest edition will not appear when you run the /Get-TargetEditions option. If the server is running an evaluation version of Windows Server 2012 R2 Standard or Windows Server 2012 R2 Datacenter, you can convert it to a retail version as follows: If the server is a domain controller, you cannot convert it to a retail version. In this case, install an additional domain controller on a server that runs a retail version and remove AD DS from the domain controller that runs on the evaluation version. From an elevated command prompt, determine the current edition name with the command DISM /online /Get-CurrentEdition. Make note of the edition ID, an abbreviated form of the edition name. Then run DISM /online /Set-Edition:<edition ID> /ProductKey:XXXXXXXXXX-XXXXXX-XXXXXX-XXXXXX /AcceptEula, providing the edition ID and a retail product key. The server will restart twice. <http://technet.microsoft.com/en-us/library/jj574204.aspx>

<http://technet.microsoft.com/en-us/library/dd744380%28v=ws.10%29.aspx>


http://blogs.technet.com/b/server_core/archive/2009/10/14/upgrading-windows-server2008-r2-without-media.aspx

<http://communities.vmware.com/people/vmroyale/blog/2012/05/30/howto-upgrading-windows-edition-with-dism> QUESTION 70

You have a domain controller named Server1 that runs Windows Server 2012 R2 and has the DNS Server server role installed. Server1 hosts a DNS zone named contoso.com and a GlobalNames zone. You discover that the root hints were removed from Server1. You need to view the default root hints of Server1. What should you do? A. From Event Viewer, open the DNS Manager log. B. From Notepad, open the Cache.dns file. C. From Windows Powershell, run Get-DNSServerDiagnostics. D. From nslookup, run root server1.contoso.com Answer: B Explanation: A. Allows you to troubleshoot DNS issues B. DNS Server service implements root hints using a file, Cache.dns, stored in the systemroot\System32\Dns folder on the server C. Gets DNS event logging details [http://technet.microsoft.com/en-us/library/cc758353\(v=ws.10\).aspx](http://technet.microsoft.com/en-us/library/cc758353(v=ws.10).aspx) All the 471 Questions and Answers in Braindump2go

70-410 Exam Dumps are the latest 70-410 Real Exam Questions not just 70-410 Practice Tests Questions! Braindump2go Microsoft 70-410 Exam Dumps PDF & VCE Guarantees you 100% Pass 70-410 Exam! Braindump2go Can Provide the Latest 70-410 Dumps Questions from Microsoft Official Exam Center for You!

Installing and Configuring Windows Server 2012 R2 Exam: 70-410



Product Description Exam Number/Code: 70-410

Exam Number/Code: 70-410

"Installing and Configuring Windows Server 2012 R2 Exam", also known as 70-410 exam, is a Microsoft Certification. With the complete collection of questions and answers, Braindump2go has assembled to take you through 471 Q&As to your 70-410 Exam preparation. In the 70-410 exam resources, you will cover every field and category in Microsoft MCSA helping to ready you for your successful Microsoft Certification.

Questions and Answers : 471 Q&As

Updated: Sep 03, 2015

~~\$129.99~~ **\$99.99**

[PDF DEMO](#)

[CHECK OUT](#)

Printable PDF **Premium VCE + VCE Simulator**

70-410 PDF Dumps & 70-410 VCE Dumps Full Version Download(471q):]<http://www.braindump2go.com/70-410.html>