

Braindump2go Shares the Newly Changed Microsoft 70-662 Exam Questions By Microsoft 70-662 Official Exam Centre (211-220)

MICROSOFT NEWS: 70-662 Exam Questions has been Updated Today! Get Latest 70-662 VCE and 70-662 PDF Instantly!

Welcome to Download the Newest Braindump2go 70-662 VCE&70-662 PDF Dumps:

<http://www.braindump2go.com/70-662.html> (507 Q&As) 2015 New Updated 70-662 Exam Dumps Questions and Answers are all from Microsoft Official Exam Center! Some new questions added into this new released 70-662 Dumps! Download 70-662 Exam Dumps Full Version Now and Pass one time! Exam Code: 70-662 Exam Name TS: Microsoft Exchange Server 2010, Configuring Certification Provider: Microsoft Corresponding Certifications: MCITP, MCITP: Enterprise Messaging Administrator on Exchange 2010, MCTS, MCTS: Microsoft Exchange Server 2010, Configuring 70-662 Dumps, 70-662 PDF, 70-662 PDF eBook, 70-662 Braindump, 70-662 Study Guide, 70-662 Book, 70-662 Practice Test, 70-662 Dumps PDF, 70-662 VCE, 70-662 VCE Dumps, 70-662 Valid Dumps, 70-662 Exam Questions Free, 70-662 Dumps, 70-662 Free Dumps, 70-662 Questions and Answers Free, 70-662 Braindump PDF, 70-662 Braindump VCE, 70-662 Preparation

TS: Microsoft Exchange Server 2010, Configuring: 70-662



Questions and Answers : 507
Q&As

Updated: Jan 02, 2016

~~\$129.99~~ **\$99.99**

PDF DEMO

CHECK OUT

Product Description Exam Number/Code: 70-662

Exam Number/Code: 70-662

"TS: Microsoft Exchange Server 2010, Configuring", also known as 70-662 exam, is a Microsoft Certification. With the complete collection of questions and answers, Braindump2go has assembled to take you through 507 Q&As to your 70-662 Exam preparation. In the 70-662 exam resources, you will cover every field and category in Microsoft MCITP helping to ready you for your successful Microsoft Certification.

Free Demo Download

Braindump2go offers free demo for 70-662 exam (TS: Microsoft Exchange Server 2010, Configuring). You can check out the interface, question quality and usability of our practice exams before you decide to buy it.

Printable PDF Premium VCE + VCE Simulator

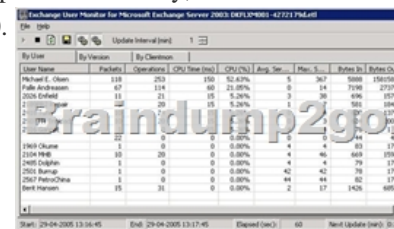
QUESTION 211 You have an Exchange organization named nwtraders.com. All servers in the organization have Exchange Server 2010 Service Pack 1 (SP1) installed. Your company acquires another company named Contoso, Ltd. You plan to create new mailboxes for each user from Contoso. You need to ensure that each new mailbox can receive e-mail messages sent to contoso.com. Which two objects should you create? (Each correct answer presents part of the solution. Choose two.) A. an accepted domain B. a Receive connector C. an organizational relationship D. an e-mail address policy E. a Remote domain Answer: A D Explanation: An accepted domain is any SMTP namespace for which a Microsoft Exchange organization sends or receives e-mail. Accepted domains include those domains for which the Exchange organization is authoritative. An Exchange organization is authoritative when it handles mail delivery for recipients in the accepted domain. Accepted domains also include domains for which the Exchange organization receives mail and then relays it to an e-mail server that's outside the Active Directory forest for delivery to the recipient. You must configure an accepted domain before that SMTP address space can be used in an email address policy. When you create an accepted domain, you can use a wildcard character (*) in the address space to indicate that all subdomains of the SMTP address space are also accepted by the Exchange organization. For example, to configure Contoso.com and all its subdomains as accepted domains, enter *.Contoso.com as the SMTP address space. The accepted domain entries are automatically available for use in an e-mail address policy. If you delete an accepted domain that's used in an e-mail address policy, the policy is no longer valid, and recipients with e-mail addresses in that SMTP domain will be unable to send or receive e-mail.

<http://technet.microsoft.com/en-us/library/bb124423> QUESTION 212 Your company has a main office and five branch offices. Each office is configured as a separate Active Directory site. You have an Exchange organization. All servers in the organization have Exchange Server 2010 Service Pack 1 (SP1) installed. The organization contains one Hub Transport server in each site and an Edge Transport server in the main office site. You add a disclaimer to all internal and external e-mail messages sent by users in the company. You discover that the e-mail messages sent from one of the branch offices do not include the disclaimer. You need to ensure that all e-mail messages include the disclaimer. What should you do? A. Force Active Directory replication on the branch office domain controllers. B. Restart the Microsoft Exchange System Attendant. C. Modify the cache settings of the branch office Hub Transport servers. D. Export all transport rules from the Hub Transport server in the main office. Import the transport rules in

the branch office Hub Transport server. Answer: AExplanation:Replication of transport rules across an organization depends on Active Directory replication. Replication time between Active Directory domain controllers varies depending on the number of sites in the organization, slow links, and other factors outside the control of Exchange. When you configure transport rules in your organization, make sure that you consider replication delays. <http://technet.microsoft.com/en-us/library/bb124703.aspx#TRR>

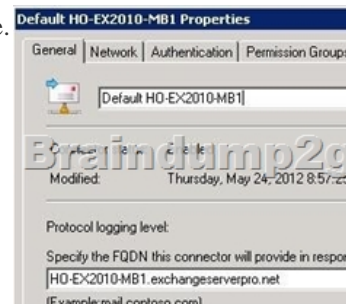
QUESTION 213 You have an Exchange organization. All servers in the organization have Exchange Server 2010 Service Pack 1 (SP1) installed. All servers run Windows Server 2008 R2. The organization contains Mailbox servers, Client Access servers, and Hub Transport servers only. You need to identify which user accounts are associated with the largest mailboxes in the organization. What should you do? A. Run the Set-AdminAuditLogConfig cmdlet. B. Run the Get-MailboxStatistics cmdlet. C. Run the Set-EventLogLevel cmdlet. D. Run the Exchange Server User Monitor (ExMon). E. Enable SMTP protocol logging. F. Run the Get-MailboxFolderStatistics cmdlet. G. Run the Get-User cmdlet. H. Run the Exchange Best Practices Analyzer. I. Modify the Server Diagnostic Logging Properties. J. Modify the Log Settings from the properties of the Hub Transport server. K. Review the Application event log. L. Review the connectivity logs. Answer: BExplanation: Get-MailboxStatistics-database "mdb01" | ft DisplayName, TotalItemSize, ItemCount

QUESTION 214 You have a hosted Exchange organization that contains 10,000 mailboxes. All servers in the organization have Exchange Server 2010 Service Pack 1 (SP1) installed. You need to retrieve the following information for the organization: - The IP addresses of all client connections - The network latency for all MAPI connections - The version of Microsoft Outlook that is used to access all of the mailboxes What should you use? A. the Microsoft Exchange Server User Monitor (ExMon) B. the Test-LogonStatistics cmdlet C. the Test-MAPIConnectivity cmdlet D. the Remote Connectivity Analyzer Answer: AExplanation: Use the Microsoft Exchange Server User Monitor to gather real-time data to better understand current client usage patterns, and to plan for future work. Administrators can view several items, including IP addresses used by clients, versions and modes of Microsoft Office Outlook, and resources such as CPU usage, server-side processor latency, and total latency for network and processing. Works with Microsoft Exchange Server 2000, 2003, 2007 and 2010.

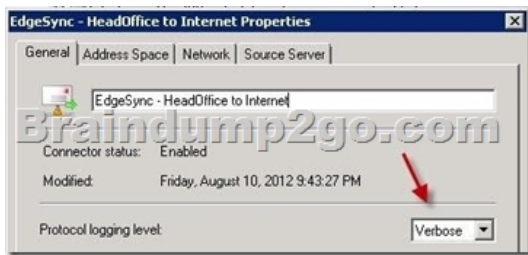


User Name	Partials	Operations	CPU Time (ms)	CPU (%)	Msg. Size	Max. S.	Bytes In	Bytes Out
Michael E. Olson	118	213	150	0.24%	5	367	None	None
Paul Anderson	47	114	65	0.05%	0	14	7198	2729
2003 Outlook	11	21	15	0.04%	3	36	496	107
2104 MB1	22	20	15	0.04%	1	5	562	584
2104 MB2	1	0	0	0.00%	0	0	0	0
2104 MB3	1	0	0	0.00%	0	0	0	0
2104 MB4	1	0	0	0.00%	0	0	0	0
2104 MB5	1	0	0	0.00%	0	0	0	0
2104 MB6	1	0	0	0.00%	0	0	0	0
2104 MB7	1	0	0	0.00%	0	0	0	0
2104 MB8	1	0	0	0.00%	0	0	0	0
2104 MB9	1	0	0	0.00%	0	0	0	0
2104 MB10	1	0	0	0.00%	0	0	0	0
2104 MB11	1	0	0	0.00%	0	0	0	0
2104 MB12	1	0	0	0.00%	0	0	0	0
2104 MB13	1	0	0	0.00%	0	0	0	0
2104 MB14	1	0	0	0.00%	0	0	0	0
2104 MB15	1	0	0	0.00%	0	0	0	0
2104 MB16	1	0	0	0.00%	0	0	0	0
2104 MB17	1	0	0	0.00%	0	0	0	0
2104 MB18	1	0	0	0.00%	0	0	0	0
2104 MB19	1	0	0	0.00%	0	0	0	0
2104 MB20	1	0	0	0.00%	0	0	0	0
2104 MB21	1	0	0	0.00%	0	0	0	0
2104 MB22	1	0	0	0.00%	0	0	0	0
2104 MB23	1	0	0	0.00%	0	0	0	0
2104 MB24	1	0	0	0.00%	0	0	0	0
2104 MB25	1	0	0	0.00%	0	0	0	0
2104 MB26	1	0	0	0.00%	0	0	0	0
2104 MB27	1	0	0	0.00%	0	0	0	0
2104 MB28	1	0	0	0.00%	0	0	0	0
2104 MB29	1	0	0	0.00%	0	0	0	0
2104 MB30	1	0	0	0.00%	0	0	0	0
2104 MB31	1	0	0	0.00%	0	0	0	0
2104 MB32	1	0	0	0.00%	0	0	0	0
2104 MB33	1	0	0	0.00%	0	0	0	0
2104 MB34	1	0	0	0.00%	0	0	0	0
2104 MB35	1	0	0	0.00%	0	0	0	0
2104 MB36	1	0	0	0.00%	0	0	0	0
2104 MB37	1	0	0	0.00%	0	0	0	0
2104 MB38	1	0	0	0.00%	0	0	0	0
2104 MB39	1	0	0	0.00%	0	0	0	0
2104 MB40	1	0	0	0.00%	0	0	0	0
2104 MB41	1	0	0	0.00%	0	0	0	0
2104 MB42	1	0	0	0.00%	0	0	0	0
2104 MB43	1	0	0	0.00%	0	0	0	0
2104 MB44	1	0	0	0.00%	0	0	0	0
2104 MB45	1	0	0	0.00%	0	0	0	0
2104 MB46	1	0	0	0.00%	0	0	0	0
2104 MB47	1	0	0	0.00%	0	0	0	0
2104 MB48	1	0	0	0.00%	0	0	0	0
2104 MB49	1	0	0	0.00%	0	0	0	0
2104 MB50	1	0	0	0.00%	0	0	0	0
2104 MB51	1	0	0	0.00%	0	0	0	0
2104 MB52	1	0	0	0.00%	0	0	0	0
2104 MB53	1	0	0	0.00%	0	0	0	0
2104 MB54	1	0	0	0.00%	0	0	0	0
2104 MB55	1	0	0	0.00%	0	0	0	0
2104 MB56	1	0	0	0.00%	0	0	0	0
2104 MB57	1	0	0	0.00%	0	0	0	0
2104 MB58	1	0	0	0.00%	0	0	0	0
2104 MB59	1	0	0	0.00%	0	0	0	0
2104 MB60	1	0	0	0.00%	0	0	0	0
2104 MB61	1	0	0	0.00%	0	0	0	0
2104 MB62	1	0	0	0.00%	0	0	0	0
2104 MB63	1	0	0	0.00%	0	0	0	0
2104 MB64	1	0	0	0.00%	0	0	0	0
2104 MB65	1	0	0	0.00%	0	0	0	0
2104 MB66	1	0	0	0.00%	0	0	0	0
2104 MB67	1	0	0	0.00%	0	0	0	0
2104 MB68	1	0	0	0.00%	0	0	0	0
2104 MB69	1	0	0	0.00%	0	0	0	0
2104 MB70	1	0	0	0.00%	0	0	0	0
2104 MB71	1	0	0	0.00%	0	0	0	0
2104 MB72	1	0	0	0.00%	0	0	0	0
2104 MB73	1	0	0	0.00%	0	0	0	0
2104 MB74	1	0	0	0.00%	0	0	0	0
2104 MB75	1	0	0	0.00%	0	0	0	0
2104 MB76	1	0	0	0.00%	0	0	0	0
2104 MB77	1	0	0	0.00%	0	0	0	0
2104 MB78	1	0	0	0.00%	0	0	0	0
2104 MB79	1	0	0	0.00%	0	0	0	0
2104 MB80	1	0	0	0.00%	0	0	0	0
2104 MB81	1	0	0	0.00%	0	0	0	0
2104 MB82	1	0	0	0.00%	0	0	0	0
2104 MB83	1	0	0	0.00%	0	0	0	0
2104 MB84	1	0	0	0.00%	0	0	0	0
2104 MB85	1	0	0	0.00%	0	0	0	0
2104 MB86	1	0	0	0.00%	0	0	0	0
2104 MB87	1	0	0	0.00%	0	0	0	0
2104 MB88	1	0	0	0.00%	0	0	0	0
2104 MB89	1	0	0	0.00%	0	0	0	0
2104 MB90	1	0	0	0.00%	0	0	0	0
2104 MB91	1	0	0	0.00%	0	0	0	0
2104 MB92	1	0	0	0.00%	0	0	0	0
2104 MB93	1	0	0	0.00%	0	0	0	0
2104 MB94	1	0	0	0.00%	0	0	0	0
2104 MB95	1	0	0	0.00%	0	0	0	0
2104 MB96	1	0	0	0.00%	0	0	0	0
2104 MB97	1	0	0	0.00%	0	0	0	0
2104 MB98	1	0	0	0.00%	0	0	0	0
2104 MB99	1	0	0	0.00%	0	0	0	0
2104 MB100	1	0	0	0.00%	0	0	0	0

<http://technet.microsoft.com/en-us/library/bb508855.aspx><http://www.microsoft.com/en-us/download/details.aspx?id=11461>
QUESTION 215 You have an Exchange organization. All servers in the organization have Exchange Server 2010 Service Pack 1 (SP1) installed. You need to identify why a remote SMTP server rejects e-mail sent from the organization. What should you do? A. Modify the connectivity log settings on the Transport server, and then review the connectivity logs. B. Modify the message tracking settings on the Transport server, and then review the message tracking logs. C. Modify the diagnostic logging level on the MExchangeTransportService object, and then review the Application event log. D. Modify the protocol logging level on the Send connectors, and then review the protocol logs. Answer: DExplanation: How to Use Shell to Enable or Disable Protocol Logging on Receive Connector In the below example, we have enabled protocol logging level for the Receive connector "Connection from Techpeoples.net". Set-ReceiveConnector -Connection from Techpeoples.net-ProtocolLoggingLevel Verbose.



How to Use Shell to Enable or Disable Protocol Logging on Send Connector In the below example, we have enabled protocol logging level for the Send connector "Connection from Techpeoples.net". Set-SendConnector-Connection from Techpeoples.net -ProtocolLoggingLevel Verbose



Protocol logging records the SMTP conversations that occur between email servers as part of message delivery. These SMTP conversations occur on Send connectors and Receive connectors configured on servers running Microsoft Exchange Server 2010 that have the Hub Transport server role or the Edge Transport server role installed. You can use protocol logging to diagnose mail flow problems. Reference: <http://technet.microsoft.com/en-us/library/bb124531.aspx>

QUESTION 216 You have an Exchange organization. All servers in the organization have Exchange Server 2010 Service Pack 1 (SP1) installed. All servers run Windows Server 2008 R2. The organization contains Mailbox servers, Client Access servers, and Hub Transport servers only. You need to ensure that you can review any changes made by administrators to the Exchange configuration. The solution must identify which administrator performed each change. What should you do?

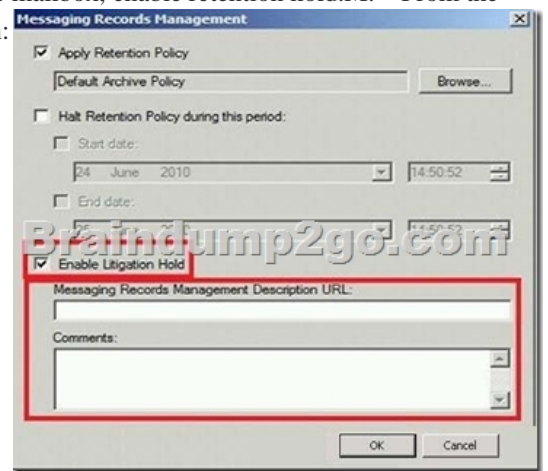
A. Modify the Log Settings from the properties of the Hub Transport server.
B. Run the Get-User cmdlet.
C. Enable SMTP protocol logging.
D. Run the Get-MailboxFolderStatistics cmdlet.
E. Run the Set-EventLogLevel cmdlet.
F. Run the Get-MailboxStatistics cmdlet.
G. Run the Exchange Best Practices Analyzer.
H. Run the Set-AdminAuditLogConfig cmdlet.
I. Review the Application event log.
J. Review the connectivity logs.
K. Modify the Server Diagnostic Logging Properties.
L. Run the Exchange Server User Monitor (ExMon).

Answer: H
Explanation: To configure the cmdlet auditing list, you need to run Set-AdminAuditLogConfig-AdminAuditLogCmdlets followed by the cmdlet name to be audited. For instance, to audit cmdlets that contain the keyword "mailbox" within the cmdlet name, run: Reference: <http://technet.microsoft.com/en-us/library/dd335109.aspx> <http://technet.microsoft.com/en-us/library/dd298169.aspx> <http://www.exchangeinbox.com/article.aspx?i=151>

QUESTION 217 You have an Exchange organization. All servers in the organization have Exchange Server 2010 Service Pack 1 (SP1) installed. You need to ensure that an administrator can recover hard-deleted e-mail messages from a user's mailbox indefinitely. What should you do?

A. From the Exchange Management Shell, run the Export-Mailbox cmdlet.
B. Create a managed custom folder and managed content settings.
C. From the Exchange Management Shell, run Set-MailboxDatabase-umpsterStatistics \$true.
D. From the properties of the mailbox, enable litigation hold.
E. From the properties of the mailbox database, select the This database can be overwritten by a restore check box.
F. From the Exchange Management Shell, run the New-MailboxSearch cmdlet.
G. From the properties of the mailbox database, modify the Deletion Settings.
H. From the Exchange Management Shell, run the New-MailboxExportRequest cmdlet.
I. Create a retention policy and a retention tag.
J. From the properties of the mailbox, enable single item recovery.
K. From the properties of the mailbox database, modify the maintenance schedule.
L. From the properties of the mailbox, enable retention hold.
M. From the properties of a Mailbox server, modify the System Settings.

Answer: D
Explanation:



QUESTION 218 You have an Exchange organization. All servers in the organization have Exchange Server 2010 Service Pack 1 (SP1) installed. Your company acquires a new Internet domain name. You need to ensure that all users can receive e-mail messages sent to the new domain name. Which two actions should you perform? (Each correct answer presents part of the solution. Choose

two.) A. Modify the properties of the default Receive connector.B. Create an External Relay accepted domain.C. Generate a new Exchange certificate that contains the new domain name.D. Modify the e-mail address policy.E. Create an Authoritative accepted domain. Answer: DE QUESTION 219You have an Exchange organization. All servers in the organization have Exchange Server 2010 Service Pack 1 (SP1) installed. You need to ensure that a user can use a .pst file to access all of the e-mail messages in a mailbox stored in a recovery database. What should you do? A. From the Exchange Management Shell, run the New-MailboxExportRequest cmdlet.B. Create a retention policy and retention tag.C. From the properties of the mailbox database, select the This database can be overwritten by a restore check box.D. From the properties of the mailbox, enable single item recovery.E. From the properties of the mailbox server, modify the System Settings.F. From the Exchange Management Shell, run the Export-Mailbox cmdlet.G. From the properties of the mailbox database, modify the maintenance schedule.H. From the properties of the mailbox, enable retention hold.I. From the properties of the mailbox database, modify the Deletion Settings.J. From the Exchange Management Shell, run Set-MailboxDatabase -DumpsterStatistics \$true.K. Create a managed custom folder and managed content settings.L. From the Exchange Management Shell, run the New-MailboxSearch cmdlet.M. From the properties of the mailbox, enable litigation hold. Answer: AExplanation:Reference:

<http://technet.microsoft.com/en-us/library/ff459227.aspx> QUESTION 220You deploy a new Exchange organization. All servers in the organization have Exchange Server 2010 Service Pack 1 (SP1) installed. The organization contains three Mailbox servers. Each Mailbox server is located in a separate datacenter. You create a public folder named Public1. You need to ensure that a copy of Public1 is stored in each datacenter. Which two actions should you perform? (Each correct answer presents part of the solution. Choose two.) A. From the Exchange Management Console, create a database availability group (DAG).B. From the Exchange Management Shell, run the Update-PublicFolder cmdlet.C. From the Public Folder Management Console, modify the properties of Public1.D. From the Exchange Management Console, create a public folder database on all of the Mailbox servers.E. From the Exchange Management Console, add each of the Mailbox servers to a database availability group (DAG). Answer: CD For those who feel the overwhelming anxiety before their 70-662 exam,Braindump2go Latest updated 70-662 Exam Dumps will help you Pass 100% in a short time preparation! 70-662 Exam Dumps PDF & VCE Full Version Instant Download!

TS: Microsoft Exchange Server 2010



Questions and Answers : 507
Q&As

Updated: Jan 02, 2016

~~+\$129.99~~ **\$99.99**

PDF DEMO

CHECK OUT

Product Description

Exam Number/Code: 70-662

TS: Microsoft Exchange Server 2010 Certification. With the complete set of resources, you will cover everything you need for your successful Microsoft Certification.

Free Demo Download

Braindump2go offers free demo (PDF and VCE) for you to check (before configuring). You can check the demo before you decide to purchase.

Printable PDF PDF DEMO

FREE DOWNLOAD: NEW UPDATED 70-662 PDF Dumps & 70-662 VCE Dumps from Braindump2go:
<http://www.braindump2go.com/70-662.html> 507 Q&As)