

## Braindump2go Promise You Pass New Exam 70-247 One Time Just Using 70-247 Latest Released Exam Questions (51-60)

Are You Interested in Successfully Completing the Microsoft 70-247 Certification Then Start to Earning Salary? Braindump2go has Leading Edge Developed Microsoft Exam Questions that will Ensure You Pass this 70-247 Certification! Braindump2go Delivers you the Most Accurate, Current and Latest Updated 70-247 Certification Exam Questions Available with a 100% Money Back Guarantee Promise! Vendor: Microsoft Exam Code: 70-247 Exam Name: Configuring and Deploying a Private Cloud with System Center 2012

### Compared Before Buying Microsoft 70-247 PDF & VCE!

Pass4sure	Braindump2go 100% Pass OR Money Back	TestKing
100 Q&As	182 Q&As	100 Q&As
\$125.99	\$99.99	\$124.99
/	Coupon Code: <b>BDNT2014</b>	/

QUESTION 51 Your network contains a System Center 2012 Virtual Machine Manager (VMM) infrastructure. The infrastructure contains 50 Hyper-V hosts. You plan to deploy Power Optimization for VMM. You need to prepare the infrastructure for the planned deployment. What should you do? (Each correct answer present part of the solution. Chose two.) A. Install a Baseboard Management Controller (BMC) on each Hyper-V host. B. Enable Dynamic Optimization. C. Enable Hibernation. D. Enable Performance and Resource Optimization (PRO). E. Install a configuration provider on each Hyper-V host. Answer: AB

Explanation: A: To use Power Optimization, the host computers must have a BMC that enables out-of-band management. B: Power Optimization is an optional feature of Dynamic Optimization, and it is only available when a host group is configured to migrate virtual machines through Dynamic Optimization. <http://technet.microsoft.com/en-us/library/gg675109.aspx>

QUESTION 52 Your network contains a domain named adatum.com. The domain contains five virtualization servers. The servers are configured as shown in the following table. You need to ensure that you can add all of the servers to the VMM fabric. Which two actions should you perform? (Each correct answer presents part of the solution. Choose two.) A. Upgrade Host1 to Hyper-V Server 2008 R2 Service Pack 1 (SP1). B. Upgrade Host2 to Hyper-V Server 2008 R2 Service Pack 1 (SP1). C. Install Hyper-V Server 2008 R2 Service Pack 1 (SP1) on Host3. D. Install Hyper-V Server 2008 R2 Service Pack 1 (SP1) on Host4. E. Install Hyper-V Server 2008 R2 Service Pack 1 (SP1) on Host5. F. Uninstall VMware vCenter from Server1. Answer: CD

Explanation: <http://technet.microsoft.com/en-us/library/gg610649> <http://technet.microsoft.com/en-us/library/hh430991>

QUESTION 53 You plan to deploy a service named Service1. When you deploy Service1, you plan to deploy several SQL scripts to a virtual machine named VM1 by using an Application Profile. You need that ensure that a user named User1 is prompted for the name of the SQL instance during the deployment of Service1. Which value should you add to the Application Profile? A. \$SQLServerInstanceName\$ B. #SQLServerInstanceName# C. @SQLServerInstanceName@ D. %SQLServerInstanceName% Answer: C

Explanation: <https://blogs.technet.com/b/scvmm/archive/2011/09/27/vmm-2012-sql-server-profile.aspx?Redirected=true>

QUESTION 54 You have a virtual application package named App1. You need to deploy App1 to a test environment. Which Windows PowerShell cmdlets should you use? A. New-ServerAppVSequencerPackage and Set-ServerAppVPackageConfiguration B. Add-ServerAppVPackage and Set-SCApplicationPackage C. Add-SCApplicationDeployment and Start-ServerAppVPackage D. Add-ServerAppVPackage and Start-ServerAppVPackage Answer: D

Explanation: <http://technet.microsoft.com/en-us/library/gg703267>

<http://blogs.technet.com/b/serverappv/archive/2011/05/12/how-to-manage-virtual-applications-using-the-server-app-v-agent-cmdlets.aspx>

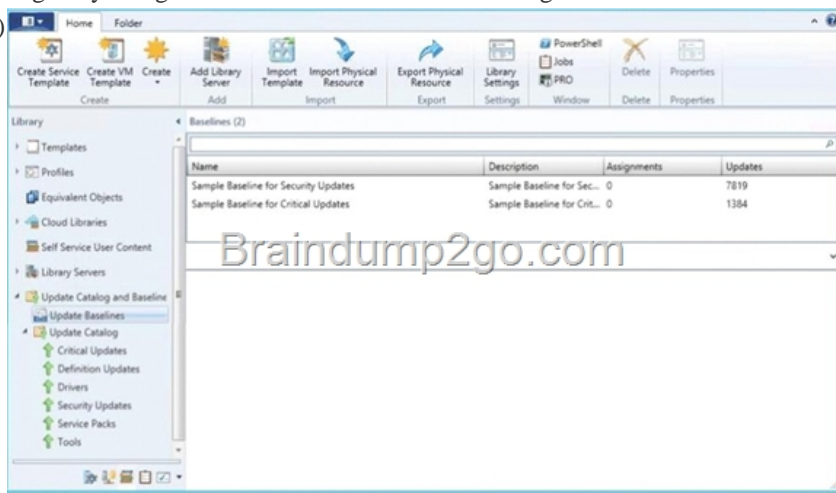
QUESTION 55 Your company has a private cloud managed by a System Center 2012 Virtual Machine Manager (VMM) infrastructure. You need to add a hardware load balancing solution to the private cloud. You deploy the hardware load balancer to the network. What should you do before you add the hardware load balancer to the fabric? (Each correct answer presents part of the solution, Choose two.) A. Create a logical network. B. Create a VIP template. C. Create a Run As Account. D. Install a configuration provider. E. Install the Network Load Balancing (NLB) feature. F. Create a User Role. Answer: BD

Explanation: B: Before you can use a hardware load balancer or NLB, you must create associated virtual IP (VIP) templates. D: To add supported hardware load balancers, you must install a configuration provider that is available from the load balancer manufacturer.

<http://technet.microsoft.com/en-us/library/gg650470.aspx> <http://technet.microsoft.com/en-us/library/gg610596.aspx>

<http://technet.microsoft.com/en-us/library/gg650470.aspx> QUESTION 56 Hotspot Questions You deploy System Center 2012 R2

Virtual Machine Manager (VMM). You configure integration between VMM and Windows Server Update Services (WSUS). You deploy several new Hyper-V hosts. The Hyper-V hosts are managed by using VMM. The Virtual Machine Manager console is configured as shown in the exhibit. (Click the Exhibit button.)



Use the drop-down menus to select the answer choice that completes each statement. **Answer Area**

The Drivers update classification on the WSUS server is [answer choice]

All Hyper-V hosts will [answer choice]

disabled.  
 enabled.  
 receive critical updates.  
 receive service packs.  
 receive security updates.  
 not receive updates

Answer: **Answer Area**

The Drivers update classification on the WSUS server is [answer choice]

All Hyper-V hosts will [answer choice]

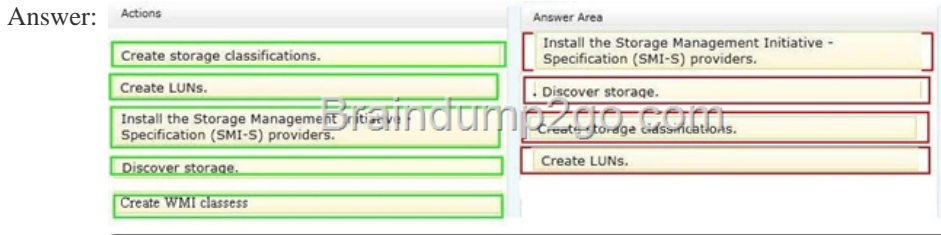
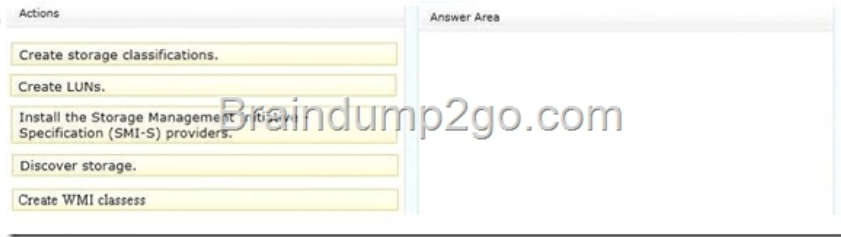
disabled.  
 enabled.  
 receive critical updates.  
 receive service packs.  
 receive security updates.  
 not receive updates

QUESTION 57 Your company has a datacenter in Los Angeles. The datacenter contains a System Center 2012 Virtual Machine Manager (VMM) infrastructure. You install the Microsoft Server Application Virtualization (Server App-V) Sequencer on a server named AppV1. You need to create a virtual application package for an application named VirtualApp. The solution must ensure that you can specify custom installation options for VirtualApp. Which four actions should you perform in sequence? (To answer, move the four appropriate actions from the list of actions to the answer area and arrange them in the correct order.) Answer: Explanation:

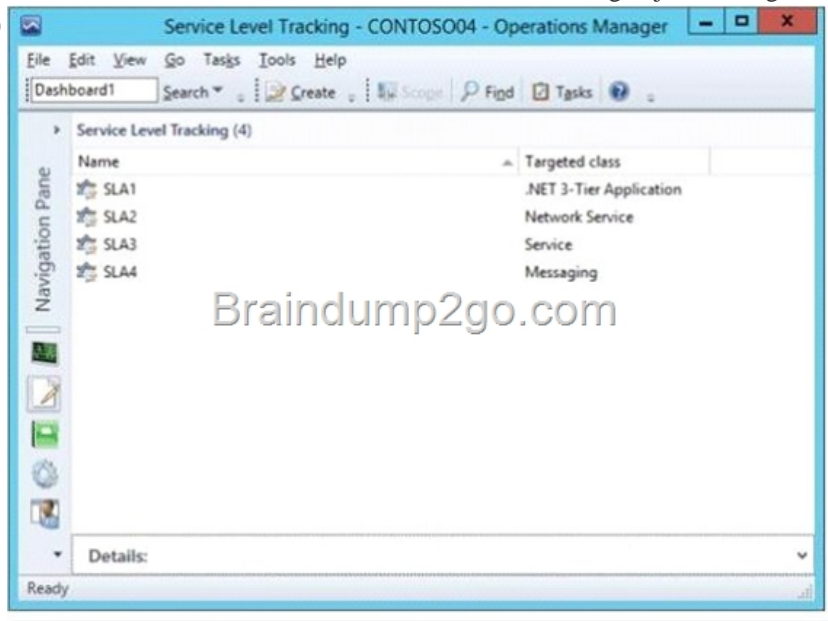
<http://blogs.technet.com/b/scvmm/archive/2011/04/18/creating-virtual-application-packages-with-microsoft-server-application-virtualization-sequencer.aspx> QUESTION 58 Your network contains two servers named Server1 and Server2. Server1 hosts a System Center 2012 Service Manager management server. Server2 hosts a Service Manager data warehouse management server. The System Center infrastructure contains test data that was entered during a testing phase. You plan to deploy the System Center servers to the production network. You need to remove the test data from the data warehouse before you deploy the server to the production network. You remove the test data from the Service Manager database. What order should you perform the listed actions? (To answer, move all the actions from the list of actions to the answer area and arrange them in the correct order.) Answer: Explanation:

<http://social.technet.microsoft.com/Forums/en/dwreportingdashboards/thread/9cedc66c-b7aa-478e-8548-7de0a9c1dfab> QUESTION 59 You have a SAN that contains SSD, SAS, and SATA drives. The SAN contains RAID0 physical partitions and RAID5 physical

partitions for each hard disk drive type. You install System Center 2012 Virtual Machine Manager (VMM). You need to create 10 LUNs for each RAID type and disk type. The LUNs must be organized based on the disk type. What order should you perform the listed actions from the VMM Administrator Console? (To answer, move all the actions from the list of actions to the answer area and arrange them in the correct order.)



Explanation: <http://technet.microsoft.com/en-us/library/gg610600> QUESTION 60 Hotspot Questions You have a private cloud that contains a System Center 2012 R2 infrastructure. You have the service level tracking objects configured as shown in the exhibit (Click the Exhibit button.)



Use the drop-down menus to select the answer choice that completes each statement. **Answer Area**

A dashboard that includes [answer choice] will display application reliability.

- SLA1
- SLA2
- SLA3
- SLA4

A dashboard that includes [answer choice] will display the status of Windows services.

- SLA1
- SLA2
- SLA3
- SLA4

Answer:

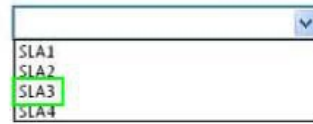
**Answer Area**

A dashboard that includes **[answer choice]** will display application reliability.



SLA1  
SLA2  
SLA3  
SLA4

A dashboard that includes **[answer choice]** will display the status of Windows services.



SLA1  
SLA2  
SLA3  
SLA4

Braindump2go Promise All 70-247 Questions and Answers are the Latest Updated, we aim to provide latest and guaranteed questions for all certifications. You just need to be braved in trying then we will help you arrange all left things! 100% Pass All Exams you want Or Full Money Back! Do you want to have a try on passing 70-247?

**Compared Before Buying Microsoft 70-247 PD**

Pass4sure	Braindump2go	
	<b>100% Pass OR Money Back</b>	
100 Q&As	182 Q&As	100
\$125.99	\$99.99	\$12
/	Coupon Code: BDN2014	/

<http://www.braindump2go.com/70-247.html>