

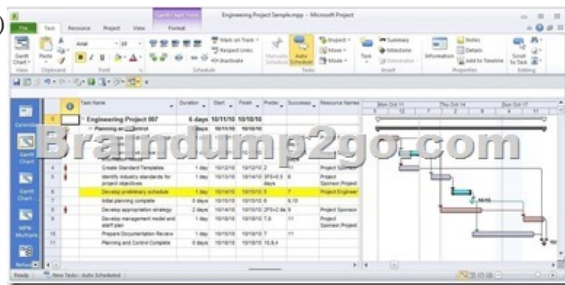
Braindump2go New Updated Exam 70-178 Questions Are the Same With The Microsoft 70-178 Actual Test (51-60)

Braindump2go New Released Microsoft 70-178 Practice Tests Sample Questions Free Download! 100% Same Questions with Actual 70-178 Exam! Guaranteed 100% Pass! Vendor: MicrosoftExam Code: 70-178Exam Name: Microsoft Project 2010, Managing ProjectsKeywords: 70-178 Exam Dumps,70-178 Practice Tests,70-178 Practice Exams,70-178 Exam Questions,70-178 PDF,70-178 VCE Free,70-178 Book,70-178 E-Book,70-178 Study Guide,70-178 Braindump,70-178 Prep Guide

Compared Before Buyi

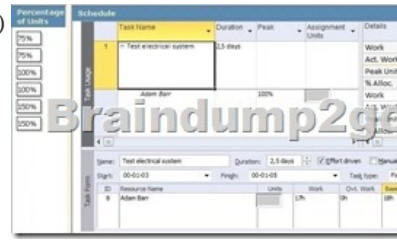
Pass4sure	100%
50 Q&As – Practice	86 Q
\$109.99	\$99.9
No Discount	Coup

QUESTION 51You manage a project that specifies all constraint types to As Soon As Possible. You discover that one of your key tasks is scheduled to end prior to the targeted finish date. You need to display the targeted finish date on the default Gantt chart. What should you modify in the Task Information window? A. Set the Deadline date field.B. Set the Constraint date field.C. Set the Finish date field.D. Select the Mark task as milestone check box.E. Select the Display on Timeline check box. Answer: A Explanation:Deadline dates don't usually affect task scheduling. They are used to indicate a target date you don't want to miss, without requiring you to set a task constraint that could affect scheduling if predecessor tasks change. A task with a deadline is scheduled just like any other task. QUESTION 52The first major phase of your project is scheduled for a duration of 45 days. However, you do not have task information for other phases. You need to indicate that the duration of the entire project is 200 days. What should you do? A. Select the Project Summary Task option.B. Select the Summary Tasks option.C. Create a manually scheduled summary task.D. Update the project calendar. Answer: C QUESTION 53The project you manage has only part-time resources. The part-time resources work four hours a day from Wednesday through Saturday. You need to create a new calendar and set the calendar as the default for your project. Which two actions should you perform? (Each correct answer presents part of the solution. Choose two.) A. Select the part-time calendar from the Change Working Time window.B. Set the calendar type to part-time for all tasks.C. Select the part-time calendar from the Project Information window.D. On the Project tab, Select Change Working Time, and then click Create New Calendar.E. Change the Calendar type in the Project Options dialog box. Answer: CD QUESTION 54You need to set the default constraint type for all new tasks to As Late As Possible. What should you do? A. Select all tasks, and then click Layout.B. In the Options dialog box, enable the New Tasks are effort driven check box.C. Select all tasks, and then set the constraint type to As Late As Possible.D. In the Project Information window, from the Schedule From drop-down list box, select Project Finish Date. Answer: DExplanation:When scheduling from the Finish Date, Project automatically assigns the As Late As Possible (ALAP) constraint to new tasks. QUESTION 55You manage a project according to the schedule as shown in the exhibit. (Click the Exhibit button.)

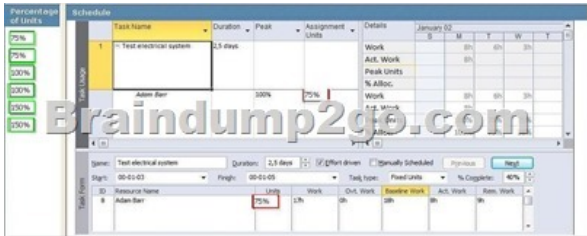


You need to set the Task Mode for task 4 to be the same as task 6. What should you do? A. Create a task dependency from Task 4 to Task 6.B. Set Task 4 as critical.C. Add a 1 day lead to Task 4.D. Set Task 4 as manually scheduled. Answer: DExplanation: The Gantt bar for task 6 indicates that it is a manually scheduled task. QUESTION 56You use bottom-up scheduling. You need to group four consecutive tasks in a major phase. You highlight the four tasks. Which command should you use? A. OutdentB. Fill DownC. Insert SummaryD. Move Task Answer: C QUESTION 57Drag and Drop QuestionYou use Microsoft Project Professional 2010 to manage an engineering project according to the schedule as shown in the exhibit. (Click the Exhibit button.) Originally, Adam Barr was assigned 75 percent units for 3 days. Adam worked for 8 hours on the first day and informed you that he

needs an additional 9 hours of work to finish. You update the schedule. What percentage of units should be reflected in the schedule by Adam's workload? (To answer, drag the appropriate units to the correct locations in the answer area.)



Answer:



QUESTION 58 You need to ensure that you can view only the tasks on your projects critical path. What should you do? A. On the Advanced tab of the Project 2010 options, select the Calculate multiple critical paths check box. B. View the projects Gantt chart and apply the Critical group. C. View the project's Gantt chart and apply the Critical filter. D. On the Advanced tab of the Project 2010 options, modify the Tasks are critical if slack is less than or equal to option. Answer: C
 QUESTION 59 The red person icon is displayed next to one of your tasks. You need to find out the reason for the display of the icon. What should you do? A. Display the task details. B. Use the Level Resource feature. C. Use the Task Inspector tool. D. View the task information. Answer: C
 QUESTION 60 One of your tasks in your project plan is 50 percent complete. The task has a finish variance of 4 days and a work variance of -14 days. Which set of values describes the task? A. The task is early by 14 days. B. The task is early by 4 days. C. The task is late by 4 days. D. The task is late by 14 days. Answer: C
 Braindump2go New Released Premium 70-178 Exam Dumps Guarantee You a 100% Exam Success Or We Promise Full Money Back! Download Microsoft 70-178 Exam Dumps Full Version From Braindump2go Instantly!

Compared Before Buying Microsoft 70-178 PDF & VCE!		
Pass4sure	Braindump2go 100% Pass OR Money Back	Test King
50 Q&As – Practice	86 Q&As – Real Questions	50 Q&As – Practice
\$109.99	\$99.99	\$124.99
No Discount	Coupon Code: BDN2014	No Discount

<http://www.braindump2go.com/70-178.html>