


## Braindump2go New Released Microsoft 70-516 Dumps Free Share (271-280)

**MICROSOFT NEWS: 70-516 Exam Questions has been Updated Today! Get Latest 70-516 VCE and 70-516 PDF Instantly! Welcome to Download the Newest Braindump2go 70-516 VE&70-516 PDF Dumps:**

<http://www.braindump2go.com/70-516.html> (286 Q&As) Real Latest 70-516 Exam Questions Updated By Official Microsoft Exam Center! Braindump2go Offers 70-516 Dumps sample questions for free download now! You also can visit our website, download our premium Microsoft 70-516 Exam Real Answers, 100% Exam Pass Guaranteed! Exam Code: 70-516 Exam Name: TS: Accessing Data with Microsoft .NET Framework 4 Certification Provider: Microsoft Corresponding Certifications: MCPD, MCPD: Web Developer 4, MCPD: Windows Developer 4, MCTS, MCTS: Microsoft .NET Framework 4, Data Access [70-516 Dumps](#), [70-516 Dumps PDF](#), [70-516 Exam PDF](#), [70-516 Book](#), [70-516 Study Guide](#), [70-516 eBook](#), [70-516 eBook PDF](#), [70-516 Exam Questions](#), [70-516 Training Kit](#), [70-516 PDF](#), [70-516 Microsoft Exam](#), [70-516 VCE](#), [70-516 Braindump](#), [70-516 Braindumps PDF](#), [70-516 Braindumps Free](#), [70-516 Practice Test](#), [70-516 Practice Exam](#), [70-516 Preparation](#), [70-516 Preparation Materials](#), [70-516 Practice Questions](#)

### TS: Accessing Data with Microsoft .NET Framework 4: 70-516



**Product Description Exam Number/Code: 70-516**

**Exam Number/Code: 70-516**

"TS: Accessing Data with Microsoft .NET Framework 4", also known as 70-516 exam, is a Microsoft Certification. With the complete collection of questions and answers, Braindump2go has assembled to take you through 286 Q&As to your 70-516 Exam preparation. In the 70-516 exam resources, you will cover every field and category in Microsoft MCPD helping to ready you for your successful Microsoft Certification.

**Free Demo Download**

Braindump2go offers free demo for 70-516 exam (TS: Accessing Data with Microsoft .NET Framework 4). You can check out the interface, question quality and usability of our practice exams before you decide to buy it.

Questions and Answers : 286 Q&As  
Updated: Nov 22, 2015  
~~\$429.99~~ **\$99.99**

[PDF DEMO](#)

[CHECK OUT](#)

**Printable PDF**  **Premium VCE + VCE Simulator**

QUESTION 271 You use Microsoft Visual Studio 2010 and Microsoft NET framework 4 to create an application the application uses the ADO NET entity framework to model entities. You define a Category class by writing the following code segment (Line numbers are included for reference only)

```
Public Class Category01  
Public Class Category02  
Public Property CategoryID As Integer  
Get04 End Get05 Set06 End Set07 End Property08  
Public Property CategoryName() As String09  
Get10 End Get11 Set12 End Set13  
End Property14  
Public Property Description() As String15  
Get16 End Get17 Set18 End Set19  
End Property20  
Public Property Picture() As Byte()21  
Get22 End Get23 Set24 End Set25  
26 End Property
```

You need to add a collection named Products to the Category class. You also need to ensure that the collection supports deferred loading. Which code segment should you insert at line 25?

A. `Public Shared Property Products() As List(Of Product) Get End GetSetEnd SetEnd Property`  
B. `Public Overridable Property Products() As IEnumerable(Of Product) Get End GetSetEnd SetEnd Property`  
C. `Public Overridable Property Products() As IEnumerable(Of Product) Get End GetSetEnd SetEnd Property`  
D. `Protected Property Products() As IList(Of Product) Get End GetSetEnd SetEnd Property`

Answer: B

QUESTION 272 You use Microsoft Visual Studio 2010 and Microsoft .NET Framework 4 to create an application. You are creating the data layer of the application. You write the following code segment. (Line numbers are included for reference only.)

```
01 Public Shared Function  
GetDataReader(sql As String) As SqlDataReader02  
Dim dr As SqlDataReader = Nothing04  
Return dr05  
End Function
```

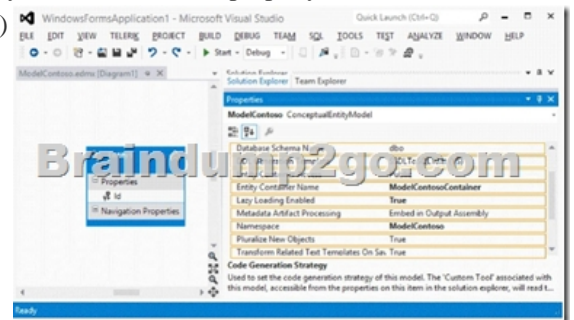
You need to ensure that the following requirements are met: The SqlDataReader returned by the GetDataReader method can be used to retrieve rows from the database. SQL connections opened within the GetDataReader method will close when the SqlDataReader is closed. Which code segment should you insert at line 03?

A. `Using cnn As New SqlConnection(strCnn) Try  
Dim cmd As New SqlCommand(sql, cnn)  
cnn.Open()  
dr = cmd.ExecuteReader()  
Catch Throw End Try  
Using B. Dim cnn As New SqlConnection(strCnn)  
Dim cmd As New SqlCommand(sql, cnn)  
cnn.Open()  
Try  
dr = cmd.ExecuteReader()  
Finally  
cnn.Close()  
End Try  
C. Dim cnn As New SqlConnection(strCnn)  
Dim cmd As New SqlCommand(sql, cnn)  
cnn.Open()  
Try  
dr = cmd.ExecuteReader()  
cnn.Close()  
Catch Throw End Try  
D. Dim cnn As New SqlConnection(strCnn)  
Dim cmd As New SqlCommand(sql, cnn)  
cnn.Open()  
Try  
dr = cmd.ExecuteReader()  
CommandBehavior.CloseConnection  
Catch  
cnn.Close()  
Throw End Try`

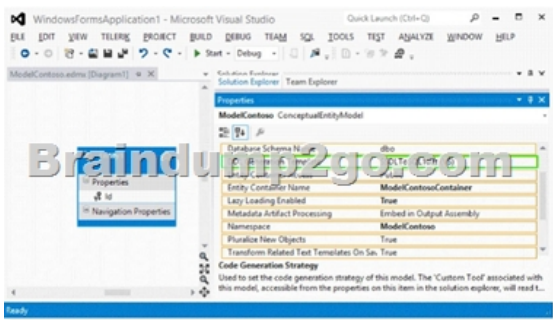
Answer: D

Explanation: CommandBehavior.CloseConnection When the command is executed, the associated Connection object is closed when the associated DataReader object is closed. CommandBehavior Enumeration(

<http://msdn.microsoft.com/en-us/library/system.data.commandbehavior.aspx>)SqlCommand.ExecuteReader Method (CommandBehavior)(<http://msdn.microsoft.com/en-us/library/y6wy5a0f.aspx>) QUESTION 273 Hotspot Question You create an Entity Data Model (EDM) named ModelContoso. You need to generate a Transact-SQL script to create a database to store ModelContoso. The solution must ensure that table names are prefixed automatically with TBL\_. Which property of ModelContoso should you modify? (To answer, select the appropriate property in the answer area.)



Answer:



QUESTION 274 You use Microsoft Visual Studio 2010 and Microsoft .NET Framework 4 to create a Microsoft Windows Forms application. You plan to deploy the application to several shared client computers. You write the following code segment. (Line numbers are included for reference only.)  
 01 Dim config As Configuration = ConfigurationManager.OpenExeConfiguration()  
 02 config.Save()  
 03 ... You need to encrypt the connection string stored in the .config file. Which code segment should you insert at line 02?

- A. Dim section As ConnectionStringsSection = TryCast(config.GetSection("connectionString"), ConnectionStringsSection) section.SectionInformation.ProtectSection("DataProtectionConfigurationProvider")
- B. Dim section As ConnectionStringsSection = TryCast(config.GetSection("connectionStrings"), ConnectionStringsSection) section.SectionInformation.ProtectSection("RsaProtectedConfigurationProvider")
- C. Dim section As ConnectionStringsSection = TryCast(config.GetSection("connectionString"), ConnectionStringsSection) section.SectionInformation.ProtectSection("RsaProtectedConfigurationProvider")
- D. Dim section As ConnectionStringsSection = TryCast(config.GetSection("connectionStrings"), ConnectionStringsSection) section.SectionInformation.ProtectSection("DataProtectionConfigurationProvider")

Answer: B  
 Explanation: You encrypt and decrypt the contents of a Web.config file by using System.Configuration.DataProtectionConfigurationProvider, which uses the Windows Data Protection API (DPAPI) to encrypt and decrypt data, or System.Configuration.RsaProtectedConfigurationProvider, which uses the RSA encryption algorithm to encrypt and decrypt data. When you use the same encrypted configuration file on many computers in a Web farm, only System.Configuration.RsaProtectedConfigurationProvider enables you to export the encryption keys that encrypt the data and import them on another server. This is the default setting.  
 CHAPTER 2 ADO.NET Connected Classes Lesson 1: Connecting to the Data Store Storing Encrypted Connection Strings in Web Applications (page 76) Securing Connection Strings(  
[http://msdn.microsoft.com/en-us/library/89211k9b\(v=vs.80\).aspx](http://msdn.microsoft.com/en-us/library/89211k9b(v=vs.80).aspx))

QUESTION 275 Drag and Drop Question You have an application that queries a Microsoft Access database. The database contains a table named Table1. Table1 contains a column named Column1. A variable named Variable1 is used to store a user input string. You need to retrieve the rows from Table1 if the value in Column1 is equal to Variable1. The solution must protect against a SQL injection attack. What should you do? (Develop the solution by selecting and ordering the required code snippets. You may not need all of the code snippets.)

```

    Dim command As OleDbCommand = New OleDbCommand
    (sql, connection)
    command.CommandType = CommandType.Text

    Dim sql = "SELECT Column2, Column1 FROM Table1
    WHERE Column1 = @Column1"
    Dim connection As OleDbConnection = New OleDb
    Connection(connectionString)

    SqlCommand command = new SqlCommand
    (sql, connection)
    command.CommandType = CommandType.Text

    Dim sql = "SELECT Column2, Column1 FROM Table1
    WHERE Column1 = ?"
    Dim connection As OleDbConnection = New OleDb
    Connection(connectionString)

    Dim sql = "SELECT Column2, Column1 FROM Table1
    WHERE Column1 = ?"
    Dim connection As OleDbConnection = New OleDb
    Connection(connectionString)
    connection.Open()

    Dim sql = "SELECT Column2, Column1 FROM Table1
    WHERE Column1 = ?"
    Dim connection As SqlConnection = New SqlCon
    nection(connectionString)
    connection.Open()

    command.Parameters.AddWithValue
    ("@Column1", Variable1)
    Dim reader As IDataReader = command.ExecuteReader
    ()

    command.Parameters.AddWithValue
    ("?", Variable1)
    connection.Open()
    Dim reader As IDataReader = command.ExecuteReader
    ()
    
```

Answer:

	Answer Area
<pre>                 Dim command As OleDbCommand = New OleDbCommand                 (sql, connection)                 command.CommandType = CommandType.Text                  Dim sql = "SELECT Column2, Column1 FROM Table1                 WHERE Column1 = @Column1"                 Dim connection As OleDbConnection = New OleDb                 Connection(connectionString)                  SqlCommand command = new SqlCommand                 (sql, connection)                 command.CommandType = CommandType.Text                  Dim sql = "SELECT Column2, Column1 FROM Table1                 WHERE Column1 = ?"                 Dim connection As OleDbConnection = New OleDb                 Connection(connectionString)                  Dim sql = "SELECT Column2, Column1 FROM Table1                 WHERE Column1 = ?"                 Dim connection As OleDbConnection = New OleDb                 Connection(connectionString)                 connection.Open()                  Dim sql = "SELECT Column2, Column1 FROM Table1                 WHERE Column1 = ?"                 Dim connection As SqlConnection = New SqlCon                 nection(connectionString)                 connection.Open()                  command.Parameters.AddWithValue                 ("@Column1", Variable1)                 Dim reader As IDataReader = command.ExecuteReader                 ()                  command.Parameters.AddWithValue                 ("?", Variable1)                 connection.Open()                 Dim reader As IDataReader = command.ExecuteReader                 ()             </pre>	<pre>                 Dim sql = "SELECT Column2, Column1 FROM Table1                 WHERE Column1 = @Column1"                 Dim connection As OleDbConnection = New OleDb                 Connection(connectionString)                  Dim command As OleDbCommand = New OleDbCommand                 (sql, connection)                 command.CommandType = CommandType.Text                  command.Parameters.AddWithValue                 ("@Column1", Variable1)                 Dim reader As IDataReader = command.ExecuteReader                 ()             </pre>

QUESTION 276 You use Microsoft .NET Framework 4 to develop an application that connects to a Microsoft SQL Server 2008 database. You add the following stored procedure to the database. CREATE PROCEDURE GetSalesPeople AS BEGIN SELECT FirstName, LastName, Suffix, Email, Phone FROM SalesPeople END You write the following code. (Line numbers are included for reference only.)

```

01 Dim connection As SqlConnection = New SqlConnection("& ")
02 Dim command As SqlCommand = New
SqlCommand("GetSalesPeople", connection)
03 command.CommandType = CommandType.StoredProcedure
You need to retrieve all
of the results from the stored procedure. Which code segment should you insert at line 04?
A. Dim res = command.ExecuteReader()
B. Dim res = command.ExecuteScalar()
C. Dim res = command.ExecuteNonQuery()
D. Dim res =
command.ExecuteXmlReader()
    
```

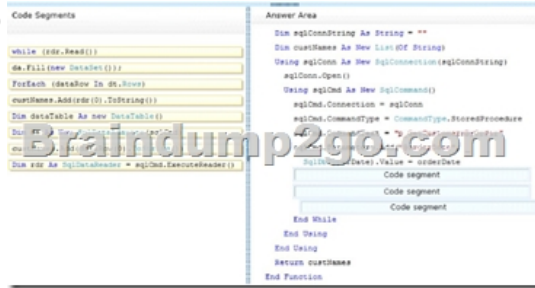
Answer: A Explanation: ExecuteReader Sends the CommandText to the Connection and builds a SqlDataReader. SqlCommand Class (<http://msdn.microsoft.com/en-us/library/system.data.sqlclient.sqlcommand.aspx>)

QUESTION 277 Drag and Drop Question You use Microsoft Visual Studio 2010 and Microsoft .NET Framework 4 to create an application. The application connects to a Microsoft SQL Server database. You have the following stored procedure:

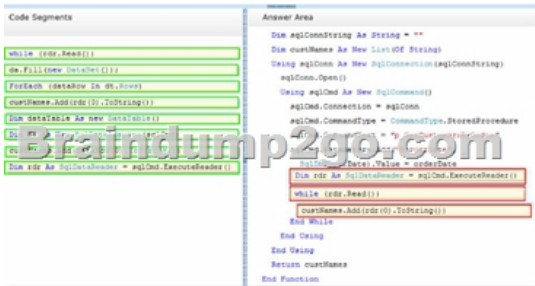
```

CREATE PROCEDURE dbo.p_GetCustomers
@orderDate datetime
FROM Customer
WHERE OrderDate = @OrderDate
    
```

You need to return a list of customers who match a given order date. The solution must meet the following requirements: Use a forward-only data object. Use a read-only data object. What should you do? (To answer, drag the appropriate code segments to the correct locations. Each code segment may be used once, more than once, or not at all. You may need to drag the split bar between panes or scroll to view content.)



Answer:



**QUESTION 278** You use Microsoft Visual Studio 2010 and Microsoft .NET Framework 4 to create an application. The application contains the following XML document. < feed >< title > Products < /title >< entry >< title > Entry title 1 < /title >< author > Author1 < /title >< content >< properties >< description > some description < /description >< n otes > some notes < /notes >< comments > some comments < /comments >< /properties >< /content >< /entry >...< /feed > You plan to add localization features to the application. You add the following code segment. (Line numbers are included for reference only.)  
 01 Public Function  
 GetTextNodesForLocalization(doc As XDocument) As IEnumerable(Of XElement)  
 03 Return From n In nodes \_04 Where n.NodeType  
 = XmlNodeType.Text \_05 Select n06 End Function  
 You need to ensure that the GetTextNodesForLocalization method returns all the XML text nodes of the document. Which code segment should you insert at line 02?  
 A. Dim nodes As IEnumerable(Of XElement) = doc.Descendants()  
 B. Dim nodes As IEnumerable(Of XElement) = doc.Nodes()  
 C. Dim nodes As IEnumerable(Of XElement) = doc.DescendantNodes()  
 D. Dim nodes As IEnumerable(Of XElement) = doc.NodesAfterSelf()  
**Answer: C**  
**Explanation:**  
 DescendantNodes() Returns a collection of the descendant nodes for this document or element, in document order. Descendants() Returns a collection of the descendant elements for this document or element, in document order. Nodes() Returns a collection of the child nodes of this element or document, in document order. NodesAfterSelf() Returns a collection of the sibling nodes after this node, in document order.

**QUESTION 279** Drag and Drop Question You have a Cable named Table1 that contains two columns named Column1 and Column2. Column1 contains string data. Column2 contains image files. You create the following code:

```
Dim sql As String = "SELECT Column2 C  

    Dim conn As New SqlConnection()  

    conn.Open()
```

What code should you use? (To answer, drag the appropriate elements to the correct locations. Each element may be used once, more than once, or not at all. You may need to drag the split bar between panes or scroll to view content.)



Answer:



**QUESTION 280** You use Microsoft Visual Studio 2010 and Microsoft .NET Framework 4 to develop an application. You use the



ADO.NET Entity Framework Designer to model entities. You need to associate a previously deserialized entity named personl to an object context named model and persist changes to the database. Which code segment should you use? A. personl.AcceptChanges() model.SaveChanges() B. model.People.Attach(personl) model.SaveChanges() C. model.AttachTo("People", personl) model.SaveChanges() D. model.People.ApplyChanges(personl) model.SaveChanges() Answer: C Explanation: Considerations from Attaching and Detaching objects (<http://msdn.microsoft.com/en-us/library/bb896271.aspx>): The object that is passed to the Attach method must have a valid EntityKey value. If the object does not have a valid EntityKey value, use the AttachTo method to specify the name of the entity set. Attach Use the Attach method ofObjectContext where the method accepts a single typed entity parameter. AttachTo The AttachTo method ofObjectContext accepts two parameters. The first parameter is a string containing the name of the entity set. The second parameter' type is object and references the entity you want to add. Attach The Attach method of ObjectSet, which is the entity set' type, accepts a single typed parameter containing the entity to be added to the ObjectSet. CHAPTER 6 ADO.NET Entity Framework Lesson 2: Querying and Updating with the Entity Framework Attaching Entities to an ObjectContext (page 437) Attaching and Detaching objects (<http://msdn.microsoft.com/en-us/library/bb896271.aspx>) [http://msdn.microsoft.com/en-us/library/bb896248\(v=vs.90\).aspx](http://msdn.microsoft.com/en-us/library/bb896248(v=vs.90).aspx) <http://msdn.microsoft.com/en-us/library/bb896248.aspx> All 286 Microsoft 70-516 Exam Dumps Questions are the New Checked and Updated! In recent years, the 70-516 certification has become a global standard for many successful IT companies. Looking to become a certified Microsoft professional? Download Braindump2go 2015 Latest Released 70-516 Exam Dumps Full Version and Pass 70-516 100%!

### TS: Accessing Data with Microsoft .NET Framework



Questions and Answers : 286 Q&As

Updated: Nov 22, 2015

~~\$129.99~~ **\$99.99**

[PDF DEMO](#)

[CHECK OUT](#)

Product Description Exam Number/Code: 70-516

Exam Number/Code: 70-516

"TS: Accessing Data with Microsoft .NET Framework 4", also known as Microsoft Certification. With the complete collection of question and answers, has assembled to take you through 286 Q&As to your 70-516 Exam. With these exam resources, you will cover every field and category in Microsoft Certification for your successful Microsoft Certification.

#### Free Demo Download

Braindump2go offers free demo for 70-516 exam (TS: Accessing Data with Microsoft .NET Framework 4). You can check out the interface, question quality and answers before you decide to buy it.

Printable PDF  Premium VCE + VCE Simulator

FREE DOWNLOAD: NEW UPDATED 70-516 PDF Dumps & 70-516 VCE Dumps from Braindump2go:  
<http://www.braindump2go.com/70-516.html> (286 Q&A)