


[Braindump2go Microsoft 70-411 Exam Objectives (221-230)]

MICROSOFT OFFICIAL: New Updated 70-411 Exam Questions from Braindump2go 70-411 PDF Dumps and 70-411 VCE Dumps! Welcome to Download the Newest Braindump2go 70-411 VCE&PDF Dumps:

<http://www.braindump2go.com/70-411.html> (322 Q&As) Get Prepared with fully updated Microsoft 70-411 Real Exam Questions and Accurate Answers for 70-411 Exam Dumps. Braindump2go IT experts review the 70-411 newly added questions and suggest Correct Microsoft 70-411 Exam Questions Answers in Real Time. 100% Pass easily! Exam Code: 70-411 Exam Name Administering Windows Server 2012 Certification Provider: Microsoft Corresponding Certifications: MCSA, MCSA: Windows Server 2012, MCSE, MCSE: Desktop Infrastructure, MCSE: Private Cloud, MCSE: Server Infrastructure Keywords: 70-411 Dumps, 70-411 Microsoft Exam Questions, 70-411 VCE, 70-411 PDF, 70-411 Practice Exams, 70-411 Practice Tests, 70-411 Book, 70-411 Study Guide

Administering Windows Server 2012 R2 Exam: 70-411



Product Description Exam Number/Code: 70-411

Exam Number/Code: 70-411

"Administering Windows Server 2012 R2 Exam", also known as 70-411 exam, is a Microsoft Certification. With the complete collection of questions and answers, Braindump2go has assembled to take you through 322 Q&As to your 70-411 Exam preparation. In the 70-411 exam resources, you will cover every field and category in Microsoft MCSA helping to ready you for your successful Microsoft Certification.

Questions and Answers : 322 Q&As

Updated: Sep 14, 2015

~~\$429.99~~ **\$99.99**

[PDF DEMO](#)

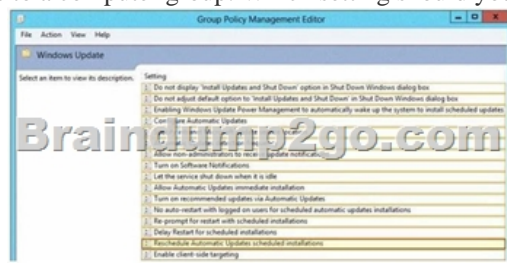
[CHECK OUT](#)

Free Demo Download

Braindump2go offers free demo for 70-411 exam (Administering Windows Server 2012 R2 Exam). You can check out the interface, question quality and usability of our practice exams before you decide to buy it.

☒ **Printable PDF** ☒ **Premium VCE + VCE Simulator**

QUESTION 221 Hotspot Question Your network contains an Active Directory domain named contoso.com. The domain contains a server named Server1 that runs Windows Server 2012 R2. Server1 has the Windows Server Update Services server role installed. You need to use the Group Policy object (GPO) to assign members to a computer group. Which setting should you configure in the GPO? To answer, select the appropriate setting in the answer area.



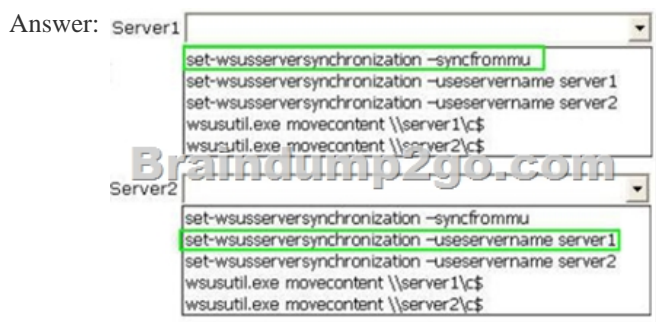
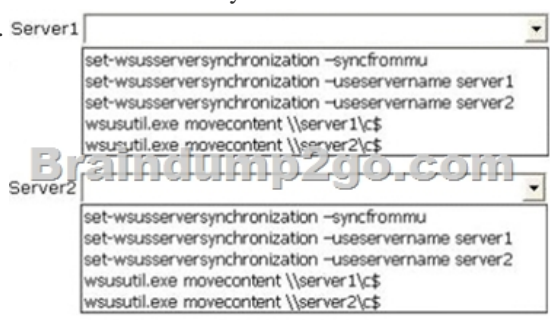
Answer:



Explanation: Client-side targeting involves automatically assigning the computers by using either Group Policy or registry keys. Second, create the computer group in WSUS. Third, move the computers into groups by using whichever method you chose in the first step. [http://technet.microsoft.com/en-us/library/cc720433\(v=ws.10\).aspx](http://technet.microsoft.com/en-us/library/cc720433(v=ws.10).aspx) QUESTION 222 The contoso.com domain contains a DNS server named Server1 that hosts a primary zone. Server2 contains a secondary zone for the contoso.com domain. You need to configure how long Server2 queries Server1 to renew the zone. What should you configure? A. Retry Interval B. Minimum TTL C. Refresh Interval D. Authority Record Answer: C Explanation: A. The time, in seconds, a secondary server waits before retrying a failed zone transfer. Normally, this time is less than the refresh interval. The default value is 600 seconds (10 minutes). B The

default Time-To-Live (TTL) of the zone and the maximum interval for caching negative answers to name queries. The default value is 3,600 seconds (1 hour). C. The time, in seconds, that a secondary DNS server waits before querying its source for the zone to attempt renewal of the zone. When the refresh interval expires, the secondary DNS server requests a copy of the current SOA record for the zone from its source, which answers this request. The secondary DNS server then compares the serial number of the source server's current SOA record (as indicated in the response) with the serial number in its own local SOA record. If they are different, the secondary DNS server requests a zone transfer from the primary DNS server. The default for this field is 900 seconds (15 minutes).D. [http://technet.microsoft.com/en-us/library/cc779148\(v=ws.10\).aspx](http://technet.microsoft.com/en-us/library/cc779148(v=ws.10).aspx)

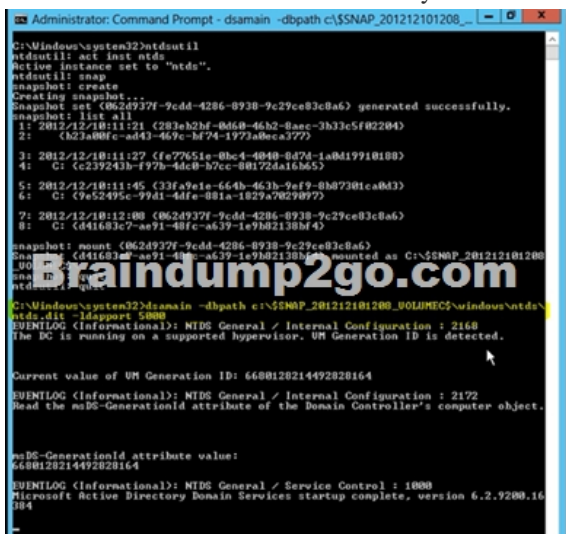
QUESTION 223 Hotspot Question Your network contains an Active Directory domain named contoso.com. The domain contains three member servers named Server1, Server2, and Server3. All servers run Windows Server 2012 R2 and have the Windows Server Update Services (WSUS) server role installed. Server1 and Server2 are configured as replica servers that use Server3 as an upstream server. You remove Server3 from the network. You need to ensure that WSUS on Server2 retrieves updates from Server1. The solution must ensure that Server1 and Server2 have the latest updates from Microsoft. Which command should you run on each server? To answer, select the appropriate command to run on each server in the answer area.



QUESTION 224 Your network contains an Active Directory domain named contoso.com. The domain contains a domain controller named DC1 that runs Windows Server 2012 R2. You mount an Active Directory snapshot on DC1. You need to expose the snapshot as an LDAP server. Which tool should you use? A. ADSI Edit B. Ntdsutil C. Dsamain D. Ldp

Answer: C

Explanation:



[http://technet.microsoft.com/en-us/library/cc753609\(v=ws.10\).aspx](http://technet.microsoft.com/en-us/library/cc753609(v=ws.10).aspx) QUESTION 225 Your network contains an Active Directory domain named contoso.com. The domain contains a server named Server1 that runs Windows Server 2012 R2. Server1 has a drive named E that is encrypted by using BitLocker Drive Encryption (BitLocker). A recovery key is stored on drive C. Drive E becomes locked. When you attempt to use the recovery key, you receive the following error message.



You need to access the data stored on drive E. What should you run first? A. `manage-bde -protectors -get e:` B. `manage-bde -unlock e: -recoverykey c:C:` C. `disable-bitlocker -mountpoint e:` D. `unlock-bitlocker -mountpoint e: -recoverykeypath c:` Answer: A Explanation: Manage-bde is used to turn on or turn off BitLocker, specify unlock mechanisms, update recovery methods, and unlock BitLocker-protected data drives. This command-line tool can be used in place of the BitLocker Drive Encryption Control Panel item.

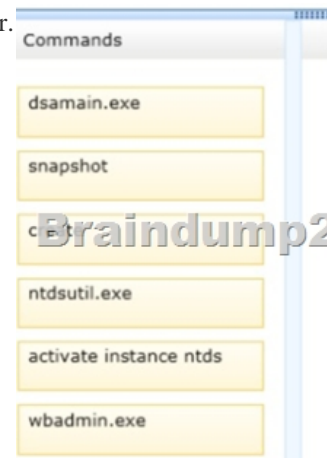
<http://technet.microsoft.com/en-us/library/ff829849.aspx> QUESTION 226 Your network contains an Active Directory domain named contoso.com. All user accounts reside in an organizational unit (OU) named OU1. You create a Group Policy object (GPO) named GPO1. You link GPO1 to OU1. You configure the Group Policy preference of GPO1 to add a shortcut named Link1 to the desktop of each user. You discover that when a user deletes Link1, the shortcut is removed permanently from the desktop. You need to ensure that if a user deletes Link1, the shortcut is added to the desktop again. What should you do? A. Modify the Link1 shortcut preference of GPO1. B. Enable loopback processing in GPO1. C. Enforce GPO1. D. Modify the Security Filtering settings of GPO1. Answer: A Explanation: This type of preference item provides a choice of four actions: Create, Replace, Update, and Delete. The behavior of the preference item varies with the action selected and whether the shortcut already exists.

<http://technet.microsoft.com/en-us/library/cc753580.aspx> <http://technet.microsoft.com/en-us/library/cc753580.aspx> QUESTION 227 Your network contains an Active Directory forest named contoso.com. The forest contains two sites named Main and Branch. The Main site contains 400 desktop computers and the Branch site contains 150 desktop computers. All of the desktop computers run Windows 8. In Main, the network contains a member server named Server1 that runs Windows Server 2012 R2. You install the Windows Server Update Services server role on Server1. You need to ensure that Windows updates obtained from Windows Server Update Services (WSUS) are the same for the computers in each site. You want to achieve this goal by using the minimum amount of administrative effort. What should you do? A. From the Update Services console, create computer groups. B. From the Update Services console, configure the Computers options. C. From the Group Policy Management console, configure the Windows Update settings. D. From the Group Policy Management console, configure the Windows Anytime Upgrade settings. E. From the Update Services console, configure the Synchronization Schedule options. Answer: C Explanation: Create one computer group for Main site and another group for Branch site. You can deploy Windows updates by computer group. QUESTION 228 Your network contains an Active Directory forest named contoso.com. The domain contains three servers. The servers are configured as shown in the following table.

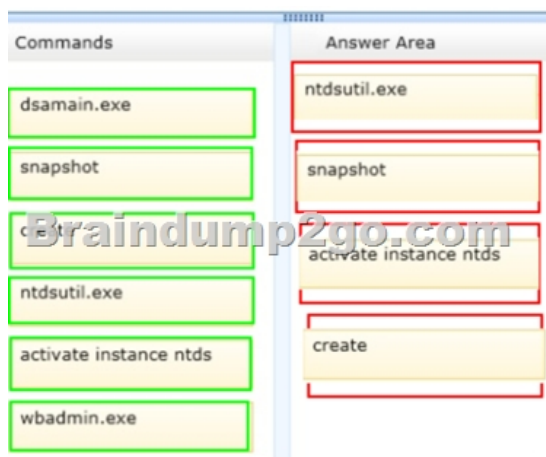
Server name	Operating system	Server role
DC1	Windows Server 2008 R2	DNS Server DHCP Server Active Directory Domain Services
Server2	Windows Server 2012 R2	File and Storage Services
Server3	Windows Server 2012 R2	Active Directory Certificate Services

You plan to implement the BitLocker Drive Encryption (BitLocker) Network Unlock feature. You need to identify which server role must be deployed to the network to support the planned implementation. Which role should you identify? A. Network Policy and Access Services B. Volume Activation Services C. Active Directory Rights Management Services D. Windows Deployment Services Answer: D Explanation: Windows Deployment Services (WDS) is a server role that enables you to remotely deploy Windows operating systems. You can use it to set up new computers by using a network-based installation. This means that you do not have to install each operating system directly from a CD, USB drive or DVD. To use Windows Deployment Services, you should have a working knowledge of common desktop deployment technologies and networking components, including Dynamic

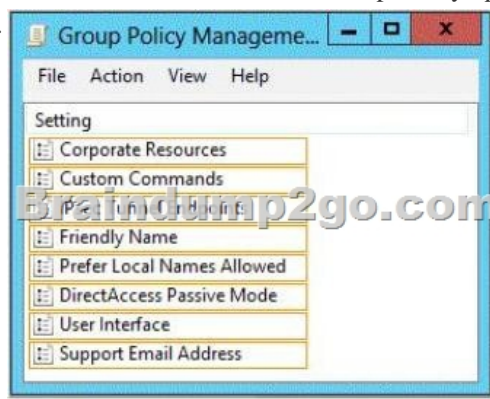
Host Configuration Protocol (DHCP), Domain Name System (DNS), and Active Directory Domain Services (AD DS). It is also helpful to understand the Preboot eXecution Environment (also known as Pre-Execution Environment). QUESTION 229 Drag and Drop Question Your network contains an Active Directory domain named contoso.com. The domain contains a domain controller named DC1. You need to create an Active Directory snapshot on DC1. Which four commands should you run? To answer, move the four appropriate commands from the list of commands to the answer area and arrange them in the correct order.



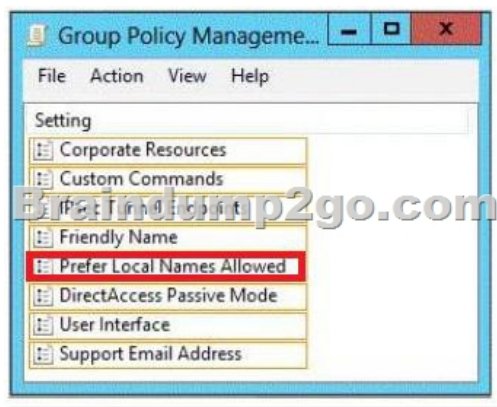
Answer:



Explanation: <http://technet.microsoft.com/nl-nl/library/cc753609%28v=ws.10%29.aspx>
<http://mizitechinfo.wordpress.com/2013/08/13/simple-step-create-a-snapshot-of-ad-ds-in-windows-server-2012-r2-by-using-ntdsutil/>
QUESTION 230 Hotspot Question Your network contains an Active Directory domain named contoso.com. The domain contains a server named Print1. Your company implements DirectAccess. A user named User1 frequently works at a customer's office. The customer's office contains a print server named Print1. While working at the customer's office, User1 attempts to connect to Print1. User1 connects to the Print1 server in contoso.com instead of the Print1 server at the customer's office. You need to provide User1 with the ability to connect to the Print1 server in the customer's office. Which Group Policy option should you configure? To answer, select the appropriate option in the answer area.




Answer:



Braindump2go Offers PDF & VCE Dumps Download for New Released Microsoft 70-411 Exam! 100% Exam Success Guaranteed OR Full Money Back Instantly!

Administering Windows Server 2012 R2 Exam: 70-411



Product Description Exam Number/Code: 70-411

Exam Number/Code: 70-411

"Administering Windows Server 2012 R2 Exam", also known as 70-411 exam, is a Microsoft Certification. With the complete collection of questions and answers, Braindump2go has assembled to take you through 322 Q&As to your 70-411 Exam preparation. In the 70-411 exam resources, you will cover every field and category in Microsoft MCSA helping to ready you for your successful Microsoft Certification.

Free Demo Download

Braindump2go offers free demo for 70-411 exam (Administering Windows Server 2012 R2 Exam). You can check out the interface, question quality and usability of our practice exams before you decide to buy it.

☒ **Printable PDF** ☒ **Premium VCE + VCE Simulator**

Questions and Answers : 322
Q&As
Updated: Sep 14, 2015
\$129.99 **\$99.99**

[PDF DEMO](#)

[CHECK OUT](#)

FREE DOWNLOAD: NEW UPDATED 70-411 PDF Dumps & VCE Dumps from Braindump2go:

<http://www.braindump2go.com/70-411.html> (322 Q&As)