

## [Braindump2go Free 70-511 Dumps Questions Download (281-290)]

**MICROSOFT NEWS: 70-511 Exam Questions has been Updated Today! Get Latest 70-511 VCE and 70-511 PDF Instantly!**

**Welcome to Download the Newest Braindump2go 70-511 VCE&70-511 PDF Dumps:**

<http://www.braindump2go.com/70-511.html> (300 Q&As) Braindump2go Updates Microsoft 70-511 Exam Dumps Questions, adds some new changed questions from Microsoft Official Exam Center. Want to know 2015 70-511 Exam test points? Download the following free Braindump2go Latest Exam Questions Today! Exam Code: 70-511 Exam Name: TS: Windows Applications Development with Microsoft .NET Framework 4 Certification Provider: Microsoft Corresponding Certifications: MCPD, MCPD: Windows Developer 4, MCTS, MCTS: Microsoft .NET Framework 4, Windows Applications [70-511 Dumps PDF](#), [70-511 PDF](#), [70-511 VCE](#), [70-511 eBook](#), [70-511 Study Guide](#), [70-511 Certification](#), [70-511 Exam Questions](#), [70-511 Book](#), [70-511 Dump](#), [70-511 eBook PDF](#), [70-511 Exam Preparation](#), [70-511 Dumps Free](#), [70-511 Braindumps](#), [70-511 Practice Tests](#), [70-511 Practice Exam](#), [70-511 Practice Test Free](#), [70-511 TS: Windows Applications Development with Microsoft .NET Framework 4](#)

**TS: Windows Applications Development with Microsoft .NET Framework 4: 70-511**

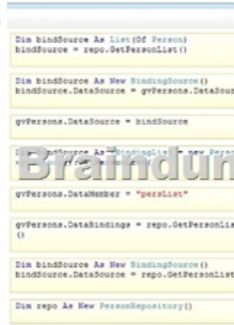


Questions and Answers : 300  
Q&As  
Updated: Nov 2, 2015  
\$420.00 **\$99.99**  
[PDF DEMO](#)  
[CHECK OUT](#)

QUESTION 281 Drag and Drop Question You have the following code:

```
01 Public Class Person
02     Public Property Id As Integer
03     Public Property FirstName As String
04     Public Property LastName As String
05 End Class
06 Public Class PersonRepository
07     Private Shared perList As List(Of Person) = Nothing
08     Public Sub New()
09         Dim p As New Person With {.Id = 1, .FirstName = "Jo", .LastName = "Davis"}
10         perList = New List(Of Person)
11         perList.Add(p)
12     End Sub
13     Public Function GetPersons() As List(Of Person)
14         Return perList
15     End Function
16 End Class
17 Partial Public Class PersonGrid : Inherits System.Windows.Forms.UserControl
18     Private gvPersons As System.Windows.Forms.DataGridView
19     Private FirstName As System.Windows.Forms.DataGridViewTextBoxColumn
20     Private LastName As System.Windows.Forms.DataGridViewTextBoxColumn
21     Public Sub New()
22         InitializeComponent()
23     End Sub
24 End Class
25 End Class
26
```

You need to fetch the Person list from the PersonRepository class and bind the returned data to a DataGridView. The solution must ensure that changes made to the data in the DataGridView are persisted to the Person list. What code should you insert at line 23? (Develop the solution by selecting and ordering the required code snippets. You may not need all of the code snippets.)



Dim bindSource As List(Of Person)  
bindSource = repo.GetPersonList()

Dim bindSource As New BindingSource()  
bindSource.DataSource = gvPersons.DataSource

gvPersons.DataSource = bindSource

gvPersons.DataSource = repo.GetPersonList()

gvPersons.DataSource = repo.GetPersonList()

Dim bindSource As New BindingSource()  
bindSource.DataSource = repo.GetPersonList()

Dim repo As New PersonRepository()

Answer:

```

    Dim bindSource As List(Of Person)
    bindSource = repo.GetPersonList()

    Dim bindSource As New BindingSource()
    bindSource.DataSource = gpPersons.DataSource

    gpPersons.DataSource = bindSource

    Dim bindSource As New BindingSource()
    bindSource.DataSource = repo.GetPersonList()

    gpPersons.DataSource = "personList"

    gpPersons.DataSource = repo.GetPersonList()

    Dim bindSource As New BindingSource()
    bindSource.DataSource = repo.GetPersonList()

    Dim repo As New PersonRepository()
    
```

```

    Dim repo As New PersonRepository()

    Dim bindSource As New BindingSource()
    bindSource.DataSource = repo.GetPersonList()
    
```

QUESTION 282 You use Microsoft .NET Framework 4 to create a Windows Presentation Foundation (WPF) application. The application uses the drag-and-drop functionality. You need to identify which enumeration member must be used to meet the following requirements:- Ensure that the data from the drag source can be copied. - Ensure that the data from the drag source can be moved. - Ensure that the target can be scrolled while you are dragging. Which enumeration member should you identify? A. DragAction.Drop B. DragAction.Cancel C. DragDropEffects.All D. DragDropEffects.None Answer: C

QUESTION 283 You have the following code in a Windows Presentation Foundation (WPF) application: You need to animate the ellipse. Which code segment should you use to declare the animation at line 13?

```

01 public void MakeCircleAnimation(FrameworkElement animatedElement,
02 double width, double height, TimeSpan timeSpan)
03 {
04     EllipseGeometry ellipseGeometry = new EllipseGeometry();
05     ellipseGeometry.RadiusX = 0;
06     ellipseGeometry.RadiusY = 0;
07     double centerX = width / 2;
08     double centerY = height / 2;
09     ellipseGeometry.Center = new Point(centerX, centerY);
10     a.From = 0;
11     double halfwidth = width / 2;
12     double halfheight = height / 2;
13
14     a.From = 0;
15     a.To = Math.Sqrt(halfwidth * halfwidth + halfheight * halfheight);
16     a.Duration = new Duration(timeSpan);
17     ellipseGeometry.BeginAnimation(EllipseGeometry.RadiusXProperty, a);
18     ellipseGeometry.BeginAnimation(EllipseGeometry.RadiusYProperty, a);
19 }
    
```

A. DiscreteVectorKeyFrame a = new DiscreteVectorKeyFrame(); B. PointAnimation a = new PointAnimation(); C. AnimationTimeLine a; D. DoubleAnimation a = new DoubleAnimation(); Answer: D

QUESTION 284 Drag and Drop Question You use Microsoft .NET Framework 4 to create a Windows Presentation Foundation (WPF) application. The application contains a window named Window1. Window1 contains several controls of the Label, TextBox, and Button types. You create the following style in a Window.Resources element:

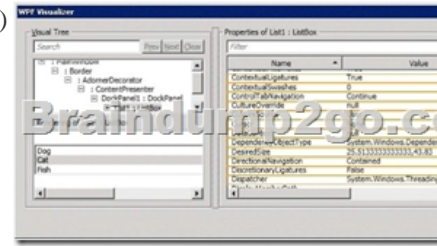
```

<Style x:Key="Style1">
    Setter Property="Control.Foreground" Value="Blue" />
</Style>
    
```

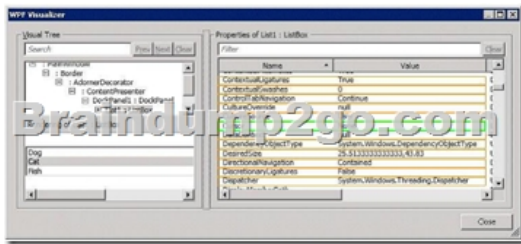
You need to define a style named Style2 that meets the following requirements:- Has a blue background- Uses the same settings as Style1- Can only be applied to the TextBox controls How should you complete the style? (To answer, drag the appropriate elements to the correct locations. Each element may be used once, more than once, or not at all. You may need to drag the split bar between panes or scroll to view content.)

Answer:

**QUESTION 285** Hotspot Question You use Microsoft .NET Framework 4 to create a Windows Presentation Framework (WPF) application. The application contains a DockPanel named DockPanel1. DockPanel1 contains a ListBox named List1 and a Button named Button 1. End-users discover that when they run the application, their mouse pointer disappears when they hover over List1. You run the application in debug mode and open the WPF Tree Visualizer. You need to identify which property causes the issue. Which property should you identify? (To answer, select the appropriate property in the answer area.)



Answer:



**QUESTION 286** You have the following code in a Windows Presentation Foundation (WPF) application: You need to animate the ellipse. Which code segment should you use to declare the animation at line 12?

```

01 Public Sub MakeCircleAnimation(ByVal animatedElement As FrameworkElement,
02     ByVal width As Double, ByVal height As Double, ByVal timespan As TimeSpan)
03     Dim ellipseGeometry As New EllipseGeometry()
04     ellipseGeometry.RadiusX = 0
05     ellipseGeometry.RadiusY = 0
06     Dim centreX As Double = width / 2
07     Dim centreY As Double = height / 2
08     ellipseGeometry.Center = New Point(centreX, centreY)
09     Dim a As New DoubleAnimation()
10     a.From = 0
11     a.To = Math.Sqrt(halfWidth * halfWidth + halfHeight * halfHeight)
12     a.Duration = New Duration(timespan)
13     ellipseGeometry.BeginAnimation(ellipseGeometry.RadiusXProperty, a)
14     ellipseGeometry.BeginAnimation(ellipseGeometry.RadiusYProperty, a)
15 End Sub
    
```

A. Dim a As New DoubleAnimation() B. Dim a As New ColorAnimation() C. Dim a As AnimationTimeline D. Dim a As New DiscreteVectorKeyFrame() Answer: B

**QUESTION 287** You are developing a Windows Presentation Foundation (WPF) application. You plan to deploy the WPF application by using ClickOnce. The application will be associated to files that have an extension of .abc. You need to ensure that when a user opens the application by double-clicking an .abc file, a TextBlock named txtBlock1 displays the path of the file. Which code should you use?

```

A. txtBlock1.Text = App.Current.Properties("ActivationData").ToString()
B. txtBlock1.Text = DataContext.ToString()
C. txtBlock1.Text = AppDomain.CurrentDomain.SetupInformation.ActivationArguments.ActivationData(0).ToString()
D. txtBlock1.Text = App.Current.Properties("FilePath").ToString()
    
```

A. Option AB. Option BC. Option CD. Option D Answer: C


**QUESTION 288** Which setup project editor is used to add project outputs to a setup project? A. File System editor B. File Types editor C. Custom Actions editor D. User Interface editor Answer: A

**QUESTION 289** Which of the following is an appropriate installation condition if you want to restrict installation to Windows 2000 or later? A. VersionNT=500 B. VersionNT>=500 C. VersionNT<=500 D. VersionNT<>500 Answer: B

**QUESTION 290** Which of the following are required to execute a custom action upon installation of your setup project? (Choose all that apply.) A. You must add an Installer class to your setup project. B. You must add an Installer class to the project you want to deploy as a custom action. C. You must write your custom action in the Install method of an Installer class. D. You must specify the project that contains the custom action in the Custom Actions editor. Answer: BCD

Braindump2go Offers PDF & VCE Dumps Download for New Released Microsoft 70-511 Exam! 100% Exam Success Guaranteed OR Full Money Back Instantly!

## TS: Windows Applications Development with Microsoft .NET Framework 4: 70-511



**Product Description Exam Number/Code: 70-511**

**Exam Number/Code: 70-511**

"TS: Windows Applications Development with Microsoft .NET Framework 4", also known as 70-511 exam, is a Microsoft Certification. With the complete collection of questions and answers, Braindump2go has assembled to take you through 300 Q&As to your 70-511 Exam preparation. In the 70-511 exam resources, you will cover every field and category in Microsoft MCPD helping to ready you for your successful Microsoft Certification.

**Questions and Answers : 300 Q&As**  
Updated: Nov 2, 2015

~~\$420.00~~ **\$99.99**

[PDF DEMO](#)

[CHECK OUT](#)

**Printable PDF**    **Premium VCE + VCE Simulator**

Braindump2go offers free demo for 70-511 exam (TS: Windows Applications Development with Microsoft .NET Framework 4). You can check out the interface, question quality and usability of our practice exams before you decide to buy it.

FREE DOWNLOAD: NEW UPDATED 70-511 PDF Dumps & 70-511 VCE Dumps from Braindump2go:  
<http://www.braindump2go.com/70-511.html> (300 Q&A)