

Braindump2go 70-662 Exam Dumps New Version Provided For Free Download Today! (31-40)

MICROSOFT NEWS: 70-662 Exam Questions has been Updated Today! Get Latest 70-662 VCE and 70-662 PDF Instantly!

Welcome to Download the Newest Braindump2go 70-662 VCE&70-662 PDF Dumps:

<http://www.braindump2go.com/70-662.html> (507 Q&As) Microsoft Official Exam Center New Released 70-662 Dumps Questions, Many New Questions added into it! Braindump2go Offer Free Sample Questions and Answers for Download Now! Visit Our Webiste, get the new updated Questions then pass Microsoft 70-662 at the first try! Exam Code: 70-662Exam Name TS: Microsoft Exchange Server 2010, ConfiguringCertification Provider: MicrosoftCorresponding Certifications: MCITP, MCITP: Enterprise Messaging Administrator on Exchange 2010, MCTS, MCTS: Microsoft Exchange Server 2010, Configuring70-662 Dumps,70-662 PDF,70-662 PDF eBook,70-662 Braindump,70-662 Study Guide,70-662 Book,70-662 Practice Test,70-662 Dumps PDF,70-662 VCE,70-662 VCE Dumps,70-662 Valid Dumps,70-662 Exam Questions Free,70-662 Dumps,70-662 Free Dumps,70-662 Questions and Answers Free,70-662 Braindump PDF,70-662 Braindump VCE,70-662 Preparation

TS: Microsoft Exchange Server 2010, Configuring



Product Description Exam Number

Exam Number/Code: 70-662

TS: Microsoft Exchange Server 2010, Configuring Certification. With the complete collection of questions assembled to take you through 507 Q&As to your resources, you will cover every field and category for your successful Microsoft Certification.

Free Demo Download

Braindump2go offers free demo for 70-662 exam (Configuring). You can check out the interface, questions and answers before you decide to buy it.

Questions and Answers : 507 Q&As
Updated: Jan 02, 2016
~~\$429.99~~ **\$99.99**

[PDF DEMO](#)

[CHECK OUT](#)

Printable PDF **Premium VCE + VCE**

QUESTION 31 You have an Exchange 2010 organization. You have an administrative user named Admin1. You need to ensure that Admin1 can move mailboxes in the organization. The solution must assign the minimum amount of permissions to Admin1. What should you do? A. Create a local move request. B. Create a custom Management role. Assign the role to Admin1. C. Add Admin1 to the Organization Management role group. D. Add Admin1 to the Recipient Management security group. Answer: B

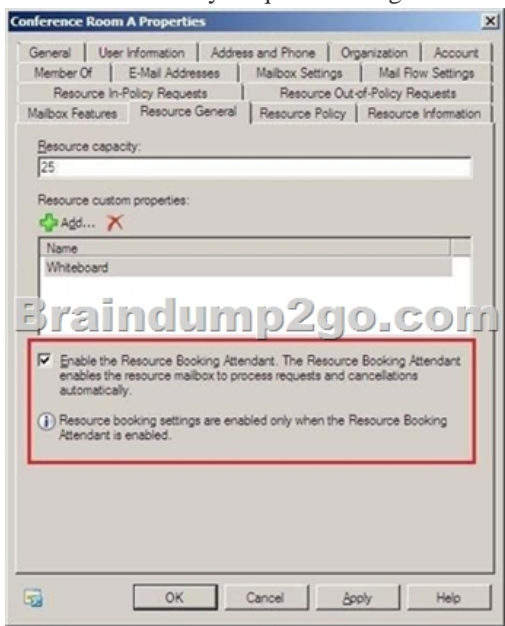
QUESTION 32 You have a hosted Exchange organization. All servers in the organization have Exchange Server 2010 Service Pack 1 (SP1) installed. You need to group a set of users for administrative delegation. What should you create? A. a managed folder mailbox policy B. a new distribution group C. a new management role D. a new role assignment policy Answer: D

Explanation: When you change role assignments, the changes you make will probably be between role groups and role assignment policies. By adding, removing, or modifying role assignments to or from these role assignees, you can control what permissions are given to your administrators and users, in effect turning on and off management of related features. Regular role assignments enable the role assignee to access the management role entries made available by the associated management role. If multiple management roles are assigned to a role assignee, the management role entries from each management role are aggregated and applied. This means that if a role assignee is assigned the Transport Rules and Journaling roles, the roles are combined, and all the associated management role entries are given to the role assignee. If the role assignee is a role group or role assignment policy, the permissions provided by the roles are then given to the users assigned to the role group or role assignment policy. The management role assignment policy is a special object in Exchange 2010. Users are associated with the role assignment policy when their mailboxes are created or if you change the role assignment policy on a mailbox. This is also what you assign end-user management roles to. The combination of all the roles on a role assignment policy defines everything that the user can manage on his or her mailbox or distribution groups. Reference: <http://technet.microsoft.com/en-us/library/dd638100.aspx> <http://technet.microsoft.com/en-us/library/dd335131.aspx>

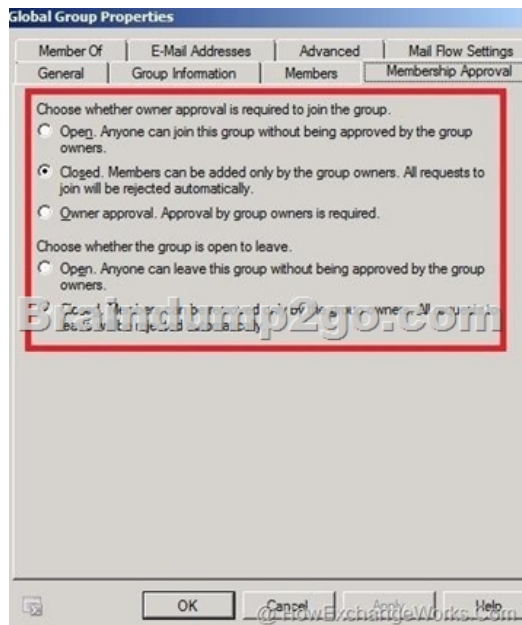
RBAC enables you to align the roles you assign to users and administrators to the roles they hold within your organization.- A management role holds a group of management role entries, which define the specific tasks that the members of a role group can perform.- You can assign management roles to management role groups using management role assignments. The management role entries associated with the management roles define the permissions granted to members and delegates of the management role

groups.- You can add users or universal security groups to management role groups as members or delegates. Both members and delegates are granted all the permissions associated with the management role entries, but delegates can also manage the management group.- A management role scope defines the objects to which the permissions granted through membership of a management role group can be applied. QUESTION 33 You have an Exchange Server 2010 organization. You need to ensure that a user can open a resource mailbox. What are two possible ways to achieve this goal? (Each correct answer presents a complete solution. Choose two.) A. From Microsoft Office Outlook, modify the properties of the resource mailbox. B. From the Exchange Management Console, create a new sharing policy. C. From the Exchange Management Shell, set the Resource Delegates parameter for the resource mailbox. D. From the Active Directory Users and Computers console, reset the password for the account associated to the resource mailbox, and then provide the password to the user. Answer: AC QUESTION 34 You have an Exchange organization. All servers in the organization have Exchange Server 2010 Service Pack 1 (SP1) installed. You need to ensure that an equipment mailbox automatically accepts all meeting requests. What should you do from the properties of the mailbox? A. Enable the Resource Booking Attendant. B. Configure the Account settings. C. Configure the Mail Flow settings. D. Configure the Resource Policy settings. E. Configure the Mailbox Features settings. F. Configure the Resource Information settings. G. Configure the Resource In-Policy Requests settings. H. Configure the Resource Out-of-Policy Requests settings. Answer: A

Explanation:

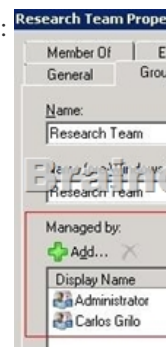


QUESTION 35 You have a hosted Exchange organization. All servers in the organization have Exchange Server 2010 Service Pack 1 (SP1) installed. You create a distribution group for all users in the company. You need to ensure that new users can add their mailboxes to the distribution group. What should you modify? A. the group scope of the distribution group B. the approval mode of the distribution group C. the security settings of the distribution group D. the authentication settings of the ECP virtual directory Answer: B Explanation:



QUESTION 36 You have an Exchange Server 2010 organization. You need to ensure that all users in the organization can automatically schedule the use of a projector. What should you do? A. Create a new sharing policy B. Create an equipment mailbox C. Modify the properties of the Calendar managed default folder D. Modify the schedule for the Managed Folder Assistant
Answer: B
QUESTION 37 You have an Exchange Server 2010 organization. A user reports that some meetings are missing from her calendar. You need to recover the missing calendar items. The solution must ensure that the missing calendar items are recovered automatically. What should you do? A. Create and then configure a sharing policy B. Set the schedule for the Managed Folder Assistant C. Run the Set-MailboxCalendarConfiguration cmdlet D. Set the schedule for the Calendar Repair Assistant (CRA).
Answer: D
Explanation: This example sets the CRA to check all mailboxes on the server MBX02 every seven days and to process all calendars that require repairs every day in that seven day cycle. Set-MailboxServer-Identity MBX02-CalendarRepairWorkCycle 7.00:00:00-CalendarRepairWorkCycleCheckpoint 1.00:00:00

<http://technet.microsoft.com/en-us/library/ee633469.aspx>
QUESTION 38 You have an Exchange Server 2010 organization. The organization contains a distribution group named Group1. You need to ensure that a user named User1 can review and approve all messages sent to Group1. You must prevent User1 from modifying the membership of Group1. What should you do? A. Add User1 to Group1's Managed by list B. Assign User1 as a group moderator for Group1 C. Assign the Message Tracking management role to User1 D. Add User1 to Group1 and then create a new journal rule.
Answer: B
QUESTION 39 You have an Exchange 2010 organization. The organization contains a distribution group named Group1. You need to ensure that a user named User1 can add and remove members from Group1. You must prevent User1 from modifying all other groups. What should you do first? A. Add User1 to Group1's Managed by list B. Assign User1 as a group moderator for Group1 C. Assign the Distributions Groups management role to User1 D. Assign the MyDistributionGroups management role to User1.
Answer: A
Explanation:



QUESTION 40 You have an Exchange Server 2010 organization. You have a group named Group1 that contains 10,000 members. You need to ensure that an informative message is displayed when users add Group1 to the recipient list of an e-mail message. What should you do? A. Configure a MailTip B. Create a transport rule C. Create a Send connector D. Configure an expansion server.
Answer: A
All 507 Microsoft 70-662 Exam Dumps Questions are the New Checked and Updated! In recent years, the 70-662 certification has become a global standard for many successful IT companies. Looking to become a certified Microsoft professional? Download Braindump2go 2015 Latest Released 70-662 Exam Dumps Full Version and Pass 70-662 100%!

TS: Microsoft E



Questions and Answers : 5
Q&As
Updated: Jan 02, 2016
\$120.00 **\$99.99**

PDF DEMO

CHECK OUT

FREE DOWNLOAD: NEW UPDATED 70-662 PDF Dumps & 70-662 VCE Dumps from Braindump2go:
<http://www.braindump2go.com/70-662.html> 507 Q&As)