

Braindump2go 70-432 Dumps PDF Free Download (201-210)

Get Prepared with fully updated Microsoft 70-432 Real Exam Questions and Accurate Answers for 70-432 Exam Dumps. Braindump2go IT experts review the 70-432 newly added questions and suggest Correct Microsoft 70-432 Exam Questions Answers in Real Time. 100% Pass easily! Vendor: Microsoft Exam Code: 70-432 Exam Name: TS: Microsoft SQL Server 2008, Implementation and Maintenance Keywords: 70-432 Exam Dumps, 70-432 Practice Tests, 70-432 Practice Exams, 70-432 Exam Questions, 70-432 PDF, 70-432 VCE Free, 70-432 Book, 70-432 E-Book, 70-432 Study Guide, 70-432 Braindump, 70-432 Prep Guide

Compa

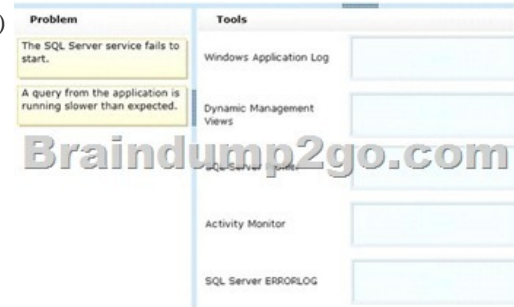
Pa

Not In St

/

/

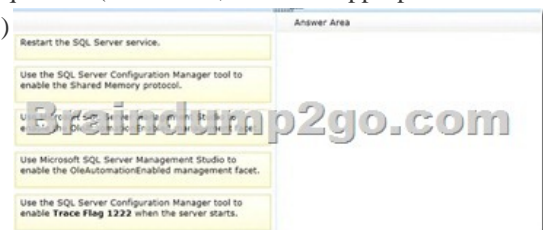
QUESTION 201 Drag and Drop Question You administer a Microsoft SQL Server 2008 R2 database instance. Occasionally, the following problems occur:- The SQL Server service fails to start.- A query from the application runs slower than expected. You need to be able to diagnose each of these problems. Which tool or tools should you use? (To answer, drag the appropriate problem to the correct tool in the answer area. Each problem may be used once, more than once, or not at all. Each tool may be used once or not at all. Additionally, you may need to drag the split bar between panes or scroll to view content.)



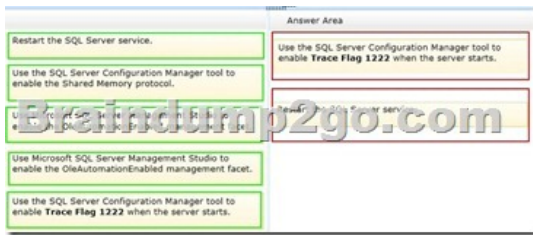
Answer:



QUESTION 202 Drag and Drop Question You administer a Microsoft SQL Server 2008 R2 database instance that supports a sales management application. Occasionally, users of the application report that they receive a deadlock error. You plan to troubleshoot this error. You need to ensure that the instance is configured to capture troubleshooting information that will create an XML document detailing the deadlock condition. Which two actions should you perform in sequence? (To answer, move the appropriate actions from the list of actions to the answer area and arrange them in the correct order.)



Answer:



QUESTION 203 You administer a Microsoft SQL Server 2008 R2 database instance. You need to identify queries or stored procedures that are consuming server resources. You also need to view the query plan that is being used by each of these queries or procedures. Which Dynamic Management Views (DMVs) should you use to find details about specific queries? (Choose all that apply.) A. dm_io_virtual_file_stats B. dm_exec_sql_text C. dm_exec_query_stats D. dm_exec_connections E. dm_exec_query_plan

QUESTION 204 You administer a Microsoft SQL Server database. You plan to deploy a new database application. You want to use SQL Server common language runtime (CLR) integration. You need to ensure that CLR assemblies can be used. What should you do? A. Run the following statement: EXEC sp_configure 'show advanced options', 1 RECONFIGURE GO EXEC sp_configure 'clr enabled', 1 RECONFIGURE GO B. Open Microsoft SQL Server Management Studio and connect to the server. Right-click the server and select Properties. Browse to the Advanced tab. Configure the CLR Integration property to True. C. Open Microsoft SQL Server Management Studio and connect to the server. Right-click the server and select Facets. Choose the Server Configuration facet. Configure the AweEnabled property to True. D. Open Microsoft SQL Server Management Studio and connect to the server. Right-click the server and select Properties. Browse to the Advanced tab. Configure the Filestream Access Level option to Full access enabled.

QUESTION 205 Drag and Drop Question You install a Microsoft SQL Server 2008 R2 instance that uses default settings. You want to add a storage area network (SAN) array. The SAN has two mapped drives: D and L. You need to ensure that all new databases meet the following requirements: - Data files are stored on drive D in the SQLData folder. - Log Files are stored on drive L in the SQLLogs folder. Which three actions should you perform in sequence? (To answer, move the appropriate actions from the list of actions to the answer area and arrange them in the correct order.)



Answer:

Restart the SQL Server service.	Answer Area Run the following command: <pre>EXEC xp_instance_regwrite N'MKEY_LOCAL_MACHINE', N'Software\Microsoft \MSSQLServer\MSSQLServer', N'DefaultData', REG_SZ, N'D:\SQLData'</pre> Run the following command: <pre>EXEC xp_instance_regwrite N'MKEY_LOCAL_MACHINE', N'Software\Microsoft \MSSQLServer\MSSQLServer', N'DefaultLog', REG_SZ, N'Li\SQLLogs'</pre>
Restart the SQL Browser service.	
Run the following command: <pre>EXEC xp_instance_regwrite N'MKEY_LOCAL_MACHINE', N'Software\Microsoft \MSSQLServer\MSSQLServer', N'DefaultData', REG_SZ, N'D:\SQLData'</pre>	
Run the following command: <pre>EXEC xp_instance_regwrite N'MKEY_LOCAL_MACHINE', N'Software\Microsoft \MSSQLServer\MSSQLServer', N'DefaultLog', REG_SZ, N'Li\SQLLogs'</pre>	
Run the following command: <pre>EXEC sp_serveroption @optname='LogfileLocation', @optvalue='Li \SQLLogs'</pre>	
Run the following command: <pre>EXEC sp_serveroption @optname='DatabaseFileLocation', @optvalue='D:\SQLData'</pre>	
Configure SQL Server to start with the following options: <pre>-d 'D:\SQLData' -l 'Li\SQLLogs'</pre>	

QUESTION 206 You administer a Microsoft SQL Server database that hosts an order-processing application. Employees in the order entry group perform real-time data entry for customers. Employees in the reporting group run historical reports. Employees in the order entry group report of poor performance when the reporting group runs reports. You need to limit the amount of CPU and RAM used by the reporting group. What should you do? A. Implement Resource Governor by using a Resource Pool assigned to the users of the reporting group to limit the amount of CPU/RAM they can use. B. Use `sp_dbmonitorddmonitoring` to set up a monitoring process to kill the reporting group's queries that pass a given threshold. C. Create a set of views in a new schema, and then alter the queries of the reporting group to use these views. D. Implement Policy Based Management by using the Server Performance facet. Answer: C

QUESTION 207 You administer a SQL Server 2008 instance. A database developer named User1 needs to view the definitions of all database objects in a database and read data from all user-defined tables, views, and table-valued functions. You need to set the required permissions for User1. Which Transact-SQL statements should you execute?

- A. CREATE ROLE Developers;
GRANT EXECUTE TO Developer;
EXEC sp_addrolemember 'De
- B. CREATE ROLE Developers;
GRANT VIEW DEFINITION TO
GRANT SELECT TO Developer;
EXEC sp_addrolemember 'De
- C. CREATE ROLE Developers;
GRANT CONTROL TO Develop
EXEC sp_addrolemember 'De
- D. CREATE ROLE Developers;
EXEC sp_addrolemember 'sp
EXEC sp_addrolemember 'sp
EXEC sp_addrolemember 'De

A. Option AB. Option BC. Option CD. Option D Answer: B

QUESTION 208 Drag and Drop Question You administer a Microsoft SQL Server 2008 R2 database named AdventureWorks2008R2 that hosts a credit card-processing application. You need to implement transparent data encryption. Which four Transact-SQL statements should you use? (To answer, move the appropriate SQL statements from the list of statements to the answer area and arrange them in the correct order.)

USE master; CREATE CERTIFICATE TDECertificate FROM ASSEMBLY 'Encryption';
USE AdventureWorks2008R2; CREATE CERTIFICATE TDECertificate WITH SUBJECT = 'TDE Encryption Cert';
USE AdventureWorks2008R2; ALTER DATABASE AdventureWorks2008R2 SET ENCRYPTION ON;
USE AdventureWorks2008R2; EXECUTE sp_dboption @dbname='AdventureWorks2008R2', @option='Transparent Encryption', @val=1;
USE master; CREATE MASTER KEY ENCRYPTION BY PASSWORD = 'Password';
USE AdventureWorks2008R2; CREATE DATABASE ENCRYPTION KEY WITH ALGORITHM = AES_256 ENCRYPTION BY SERVER ASYMMETRIC KEY;
USE AdventureWorks2008R2; CREATE DATABASE ENCRYPTION KEY WITH ALGORITHM = AES_256 ENCRYPTION BY SERVER CERTIFICATE TDECertificate;

Answer:

USE MASTER; CREATE CERTIFICATE TDECertificate FROM ASSEMBLY 'Encryption';	USE MASTER; CREATE MASTER KEY ENCRYPTION BY PASSWORD = 'Password';
USE AdventureWorks2008R2; CREATE CERTIFICATE TDECertificate WITH SUBJECT = 'TDE Encryption Cert';	USE AdventureWorks2008R2; CREATE CERTIFICATE TDECertificate WITH SUBJECT = 'TDE Encryption Cert';
USE AdventureWorks2008R2; ALTER DATABASE AdventureWorks2008R2 SET ENCRYPTION ON;	USE AdventureWorks2008R2; CREATE DATABASE ENCRYPTION KEY WITH ALGORITHM = AES_256 ENCRYPTION BY SERVER CERTIFICATE TDECertificate;
USE AdventureWorks2008R2; EXECUTE sp_DropKey @dbname='AdventureWorks2008R2', @key = 'Password';	USE AdventureWorks2008R2; ALTER DATABASE AdventureWorks2008R2 SET ENCRYPTION ON;
USE MASTER; CREATE MASTER KEY ENCRYPTION BY PASSWORD = 'Password';	USE AdventureWorks2008R2; CREATE DATABASE ENCRYPTION KEY WITH ALGORITHM = AES_256 ENCRYPTION BY SERVER ASYMMETRIC KEY;
USE AdventureWorks2008R2; CREATE DATABASE ENCRYPTION KEY WITH ALGORITHM = AES_256 ENCRYPTION BY SERVER CERTIFICATE TDECertificate;	

QUESTION 209 Drag and Drop Question You administer a Microsoft SQL Server 2008 R2 database installed along with the default settings. You want to migrate a database from a SQL Server 2000 server that is being decommissioned. The application instantiates ActiveX objects from stored procedures in the database by using sp_OACreate. You need to configure SQL Server 2008 R2 to allow command-line calls from this database. Which three actions should you perform in sequence? (To answer, move the appropriate actions from the list of actions to the answer area and arrange them in the correct order.)

	Answer Area
Use Microsoft SQL Server Management Studio to connect to the new SQL Server by using an account that has standard permissions.	
Use Microsoft SQL Server Management Studio to connect to the new SQL Server by using an account that has administrative permissions.	
Create a new SQL Server Agent job and add a new operating system step to the job. Move the legacy stored procedures to the new SQL Server Agent job.	
Browse to the SQL Server Agent in Microsoft SQL Server Management Studio, right-click, and select Facets. Select the Surface Area Configuration facet, and set the XPCmdShellEnabled property to True.	
Run the following statement: EXEC RECONFIGURE GO	
Run the following statement: EXEC sp_configure 'show advanced options', 1 RECONFIGURE GO	
Run the following statement: EXEC sp_configure OLE Automation Procedures, 1 RECONFIGURE GO	
Run the following statement: EXEC sp_configure 'compatibility mode', 1 RECONFIGURE GO	

Answer:

	Answer Area
Use Microsoft SQL Server Management Studio to connect to the new SQL Server by using an account that has standard permissions.	Use Microsoft SQL Server Management Studio to connect to the new SQL Server by using an account that has administrative permissions.
Use Microsoft SQL Server Management Studio to connect to the new SQL Server by using an account that has administrative permissions.	
Create a new SQL Server Agent job and add a new operating system step to the job. Move the legacy stored procedures to the new SQL Server Agent job.	Run the following statement: EXEC sp_configure 'show advanced options', 1 RECONFIGURE GO
Browse to the SQL Server Agent in Microsoft SQL Server Management Studio, right-click, and select Facets. Select the Surface Area Configuration facet, and set the XPCmdShellEnabled property to True.	Run the following statement: EXEC sp_configure OLE Automation Procedures, 1 RECONFIGURE GO
Run the following statement: EXEC RECONFIGURE GO	Run the following statement: EXEC sp_configure 'compatibility mode', 1 RECONFIGURE GO
Run the following statement: EXEC sp_configure 'show advanced options', 1 RECONFIGURE GO	
Run the following statement: EXEC sp_configure OLE Automation Procedures, 1 RECONFIGURE GO	
Run the following statement: EXEC sp_configure 'compatibility mode', 1 RECONFIGURE GO	

QUESTION 210 Drag and Drop Question You administer a Microsoft SQL Server 2008 R2 database instance. You need to identify the purpose of each Dynamic Management Views (DMVs). What should you do? (To answer, drag the appropriate purpose to the correct DMV in the answer area. Each purpose may be used once, more than once, or not at all. Each DMV may be used once or not at all. Additionally, you may need to drag the split bar between panes or scroll to view content.)

Purpose	DMV
Used to view Windows performance metrics.	dm_fts_memory_buffers
Used to identify how much memory an individual query consumes.	dm_io_virtual_file_stats
Used to identify how intensively a specific data file is accessed.	dm_os_performance_counters
	dm_exec_query_memory_grants
	dm_os_windows_info

Answer:

Purpose	DMV
Used to view Windows performance metrics.	dm_fts_memory_buffers
Used to identify how much memory an individual query consumes.	dm_io_virtual_file_stats
Used to identify how intensively a specific data file is accessed.	dm_os_performance_counters
	dm_exec_query_memory_grants
	dm_os_windows_info

2015 Latest Released Microsoft 70-432 Exam Dumps Free Download From Braindump2go Now! All Questions and Answers are checked again by Braindump2go Experts Team, 100% Real Questions and Correct Answers Guaranteed! Full Money Back Guarantee Show our Confidence in helping you have a 100% Success of Exam 70-432! Just have a try!

Compared Before Buying Microsoft 70-432	
Pass4sure	Braindump2go
Not In Stock	100% Pass OR Money Back
/	233 Q&As – Real Questions
/	\$99.99
/	Coupon Code: BDNT2014

<http://www.braindump2go.com/70-432.html>