

## Braindump2go 100% Pass Promise: 74-409 Exam Dumps Questions New Updated By Microsoft Official Exan Center (21-30)

74-409 Exam Dumps Free Shared By Braindump2go For Instant Download Now! Download Latest 74-409 Exam Questions and pass 74-409 one time easily! Do you want to be a winner? Vendor: Microsoft Exam Code: 74-409 Exam Name: Server Virtualization with Windows Server Hyper-V and System Center  
**Keywords:** Microsoft 74-409 Exam Dumps, 74-409 Practice Tests, 74-409 Practice Exams, 74-409 Exam Questions, 74-409 PDF, 74-409 VCE, 74-409 Training Guide, 74-409 Study Material, 74-409 Book

<b>Compared Before</b>
<b>Pass4sure</b>
<b>99 Q&amp;As – Practice</b>
<b>\$124.99</b>
<b>No Discount</b>

**QUESTION 21** You have a Windows Server 2012 R2 with the Hyper-V role installed. The host server hosts a virtual machine (VM) named NYC-VM. The virtual switches for the host server are configured as follows: NYC-VM must meet the following requirements: - Communicate with all of the VMs on the same virtualization host server - Communicate with the virtualization host server must NOT - Communicate with VMs on different virtualization host servers You need to configure the virtual switch for NYC-VM. What should you do?

Virtual Switch Name	Connection Type
EXT	External
INT	Internal
PRI	Private

A. On NYC-VM, enable virtual LAN identification. B. Run the Windows PowerShell command Connect-VMNetworkAdapter-VMName NYC-VM-SwitchName INT. C. Connect NYC-VM to the EXT switch. D. Run the Windows PowerShell command Connect-VMNetworkAdapter-VMName NYC-VM-SwitchName EXT. Answer: B Explanation: How to Configure Network Settings on a Hyper-V Host in VMM <http://technet.microsoft.com/en-us/library/gg610603.aspx> External - Use this type when you want to allow virtual machines to communicate with each other and with externally located servers, and optionally with the host operating system. The External type is bound to a physical network adapter. This type can be used to allow virtual machines to access a perimeter network and not expose the host operating system. Internal - Use this type when you want to allow communication between virtual machines on the same host and between the virtual machines and the host. The Internal type is not bound to a physical network adapter. It is typically used to build a test environment where you want to connect to the virtual machines from the host operating system, but do not want to allow virtual machines on the host to communicate with external networks. Private - Use this type when you want to allow communication between virtual machines on the same host but not with the host or with external networks. The Private type does not have a virtual network adapter in the host operating system, nor is it bound to a physical network adapter. The Private type is typically used when you want to isolate virtual machines from network traffic in the host operating system and in the external networks. **QUESTION 22** A company has a Windows Server 2012 R2 server named NYC-HOST1 that has the Hyper-V role installed. The host server hosts two virtual machines named SALES1 and SALES2. NYC-HOST1 uses storage spaces with tiered storage. The storage spaces contain both solid state disks (SSDs) and 10,000 RPM Serial Attached SCSI (SAS) disks for .vhdx files. Each virtual machine runs on its own .vhdx file. You plan to add new virtual machines each month. SALES1 and SALES2 must run at the highest possible performance at all times. You need to configure the virtual machines. What should you do? A. Add additional SSDs to the storage space that is occupied by SALES1 and SALES2. B. Replace the 10,000 RPM SAS disks with 15,000 RPM SAS disks. C. Move the .vhdx files from the storage spaces to individual SAS hard disks. D. pin the .vhdx files for SALES1 and SALES2 to the fast tier. Answer: D Explanation: <http://blogs.technet.com/b/askpfeplat/archive/2013/10/21/storage-spaces-how-toconfigure-storage-tiers-with-windows-server-2012-r2.aspx> Storage Tiers in Windows Server 2012 R2 enhances Storage Spaces by combining the best performance attributes of solid-state disks (SSDs) with the best cost:capacity attributes of hard disk drives (HDDs) together. It allows us to create individual Storage Spaces LUNs ( called Virtual Disks - not to be confused with Hyper-V Virtual Hard Disks or VHDs ) that span SSD and HDD tiers. Once a tiered LUN is created, Windows Server 2012 R2 analyzes disk IO requests on-the-fly and keeps the most

frequently accessed data blocks located on speedy SSDs while moving less frequently accessed data blocks to HDDs - all transparently to applications and users. QUESTION 23A company has one Active Directory Domain Services (AD DS) forest that contains two domains. All servers run Windows Server 2012 R2. The company uses iSCSI storage and Fibre Channel storage. You plan to deploy a single Hyper-V failover cluster that uses Cluster Shared Volumes (CSV). The cluster must include virtual machines from both domains. You need to ensure that you can deploy a failover cluster. What should you do? A. Join each Hyper-V host server to the same AD DS domain. B. Deploy clustered storage spaces. C. Deploy Serial Attached SCSI (SAS). D. Join each Hyper-V host server to different AD DS domains. Answer: A Explanation: <http://technet.microsoft.com/en-us/library/dn505754.aspx>

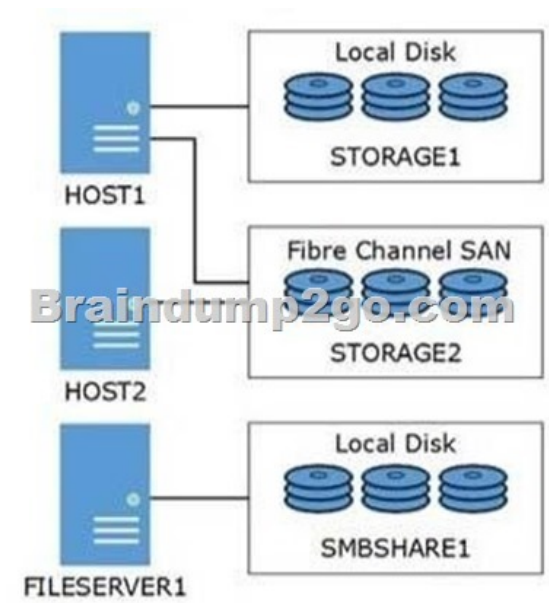
Domain role: All servers in the cluster must be in the same Active Directory domain. As a best practice, all clustered servers should have the same domain role (either member server or domain controller). The recommended role is member server. QUESTION 24A company has seven Windows Server 2012 R2 virtual machines (VMs). The VMs are running and are accessible over the network. You plan to copy a large .ISO file from the host server to each of the VMs. The copy operations must meet the following requirements: - The VMs must remain accessible over the network during the copy operations. - The copy operations must NOT use a network connection. You need to configure the VMs. What should you do on each VM? A. Enable the Guest services integration service. B. Enable the Data Exchange integration service. C. Add a network adapter, and then enable the virtual machine queue (VMQ) option on the adapters. D. Set the value of the Smart Paging File Location property to %SYSTEMROOT%temp. Answer: A Explanation: <http://technet.microsoft.com/en-us/library/dn282278.aspx>

Q: What is the new Guest services integration service in Windows Server 2012 R2 Hyper-V? A: Several integration services are available for virtual machines (VMs) such as time synchronization, heartbeat, backup, OS shutdown, and data exchange. In Windows Server 2012 R2, a new integration service has been added, Guest services. Guest services enables the copying of files to a VM using WMI APIs or using the new Copy-VMFile Windows PowerShell cmdlet. QUESTION 25 You administer a Windows Server 2012 R2 server that has the Hyper-V role installed. The server hosts three virtual machines (VMs). One of the VMs is managed by a security engineer. The security engineer must capture traffic on another VM that is running on the same server. You need to ensure that the security engineer can access the network traffic information from the target VM. Which networking feature should you enable? A. port mirroring B. NIC teaming C. protected network D. MAC address spoofing Answer: A Explanation:

[http://technet.microsoft.com/en-us/library/jj679878.aspx#bkmk\\_portmirror](http://technet.microsoft.com/en-us/library/jj679878.aspx#bkmk_portmirror) Port Mirroring With Port Mirroring, traffic sent to or from a Hyper-V Virtual Switch port is copied and sent to a mirror port. There are a range of applications for port mirroring - an entire ecosystem of network visibility companies exist that have products designed to consume port mirror data for performance management, security analysis, and network diagnostics. With Hyper-V Virtual Switch port mirroring, you can select the switch ports that are monitored as well as the switch port that receives copies of all the traffic. The following examples configure port mirroring so that all traffic that is sent and received by both MyVM and MyVM2 is also sent to the VM named MonitorVM.

Set-VmNetworkAdapt  
Set-VmNetworkAdapt  
Set-VmNetworkAdapt

QUESTION 26 Hotspot Question A company has a Hyper-V environment that includes three servers named HOST1, HOST2, and FILESERVER1. HOST1 and HOST2 run Windows Server 2012 R2 that have the Hyper-V role installed. FILESERVER1 runs Windows Server 2008 R2 and has the File Services role installed. All of the hardware supports Offloaded Data Transfer (ODX). The servers are configured as shown in the following diagram:



STORAGE1 is encrypted with BitLocker. You need to support ODX for all of the virtual machines on HOST1. Use the drop-down menus to complete each statement based on the information presented in the screenshot. Each correct selection is worth one point.

Which type of controller should you use?

Where should you place the virtual hard disk?

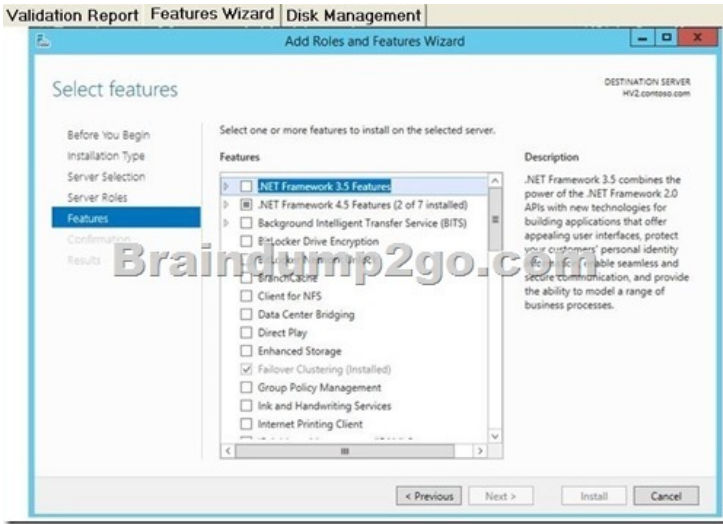


Explanation: SCSI disk because ODX is not supported on IDE controllers and Storage 2 because it is the only storage shared between Host1 and Host2. Hyper-V Offloaded Data Transfer Overview <http://technet.microsoft.com/en-us/library/hh831375.aspx> Requirements Hyper-V Offloaded Data Transfer requires the following: ? Offloaded Data Transfer? capable hardware to host the virtual hard disk files. The hardware needs to be connected to the virtual machine as virtual SCSI devices or directly attached physical disks (sometimes referred to as pass-through disks). ? This optimization is also supported for natively attached, VHDX-based virtual disks. ? VHD-based or VHDX-based virtual disks attached to a virtual IDE controller do not support this optimization because integrated development environment (IDE) devices lack support for Offloaded Data Transfer. QUESTION 27 A Windows Server 2012 R2 Hyper-V host server has four network adapters that are connected to two different network switches, server contains a virtual machine named NYC-WEB. You have the following requirements: - increase the available bandwidth for NYC-WEB - implement network fault tolerance for NYC-WEB without modifying network switch configurations - use the least amount of administrative effort You need to configure the Hyper-V environment. What should you do first? A. Enable NIC teaming. Configure the team to use Static Teaming mode. B. Enable NIC teaming. Configure the team to use Switch Independent mode. C. Enable Bandwidth Management on NYC-WEB. D. Run the Windows PowerShell command Set-NetLbfoTeam-Name Team1-TeamingMode Static. Answer: B Explanation:

<http://blogs.technet.com/b/privatecloud/archive/2012/06/19/nic-teaming-in-windowsserver-2012-brings-simple-affordable-traffic-reliability-and-load-balancing-to-your-cloudworkloads.aspx> NIC Teaming can be configured in either a ?Switch Independent? mode or a ?Switch Dependent? mode. When configuring NIC Teaming in ?Switch Independent? mode, the teaming configuration will work with any Ethernet switches ? even non-intelligent switches - because Windows Server 2012 handles all of the intelligence with this NIC teaming mode. No special configuration changes are necessary. You can even use this mode to team across separate switches in scenarios that require switch diversity for extra network fault tolerance. QUESTION 28 Hotspot Question You plan to implement guest clustering that contains two virtual machines (VMs). You review the following information from one of the VMs: - The Validate File System test results in the Failover Clustering Validation Report, as shown in the Validation Report exhibit (Click the Exhibit button.)



- The Features page of the Add Roles and Features Wizard, as shown in the Features Wizard exhibit (Click the Exhibit button.)



- The disk management settings, as shown in the Disk Management exhibit (Click the Exhibit button.)



You need to ensure that you can implement guest clustering. For each of the following statements, select Yes if the statement is true. Otherwise, select No. Each correct selection is worth one point.

Yes No

The VM has the required features installed.

The VM has the required shared storage type.

The VM has the required hardware installed.

Answer: Yes No

The VM has the required features installed.

The VM has the required shared storage type.

The VM has the required hardware installed.

QUESTION 29A company has a Windows Server 2012 R2 server that has the Hyper-V role installed. The server hosts 12 virtual machines (VMs) that run Windows Server 2012 R2. The company plans to deploy System Center 2012 R2 Data Protection Manager (DPM). The company has identified the following requirements for the DPM deployment:- Allow files and folders on VMs to be recovered - allow recovery of data to a network Share - minimize the number of DPM protection agents that you must deploy You need to implement the backup solution. Which two actions should you perform? Each correct answer presents part of the solution.

- A. Deploy a DPM server.
- B. Deploy the DPM protection agent to VMs.
- C. Add the Hyper-V role to the DPM server.
- D. Configure DPM to perform guest-level backups of the VMs.
- E. Configure DPM to perform host-level backups of the VMs.

Answer: AE Explanation: You can back up virtual machines at the host or guest level. At the host level the DPM protection agent is installed on the Hyper-V host server or cluster. At the guest level the agent is installed on each virtual machine. If you deploy host level back you'll be able to recover an entire virtual machine, or perform item-level recovery to want to be able to back up and restore specific files, folder, volumes or hard disks. Guest-level back is useful if you want to protect specific workloads running on a

virtual machine. For example if you specifically want to back up a SQL Server database running on the virtual machine. Note that you must use guest-level backup if you want to protect data stored on passthrough disks. Passthrough allow the virtual machine to directly access the storage device and don't store virtual volume data in a VHD file. QUESTION 30 You manage a virtualization environment that contains Windows Server 2012 R2 servers that have the Hyper-V role installed. You manage the host servers by using Virtual Machine Manager (VMM) in System Center 2012 R2. You must monitor the virtualization environment, including all virtual machines and service instances. You need to configure monitoring. Which three actions should you perform? Each correct answer presents part of the solution. A. Import the VMM Management Pack and then deploy agents to the Hyper-V host servers and the VMM server. On the Hyper-V host server, enable agent proxy for the Operations Manager agent. B. In the VMM console, add the name of an Operations Manager server to the management group that will be used to monitor the virtualization infrastructure. C. On the VMM server, install the Operations Manager console. D. On the Operations Manager management server, enable Windows Remote Management (WinRM). E. Import the VMM Management Pack and then deploy agents to Hyper-V host servers and the VMM Server. On the VMM server, enable agent proxy for the Operations Manager agent. F. Configure the VMM server and the Active Directory computer accounts of the Hyper-V host servers to allow constrained delegation. Answer: BCE Explanation: The answer is B, C, E. Nothing about this configuration requires Constrained Delegation or WinRM. A is not the correct place for that setting. How to Connect VMM with Operations Manager

<http://technet.microsoft.com/en-us/library/hh882396.aspx> Braindump2go Promises All our customers: 100% All Exams Pass Or Full Money Back! Our experts have complied the fail proof 74-409 Exam content to help all candidates pass your 74-409 certification exam easily in the first attempt and score the top possible grades too. Do you want to success? Come to Braindump2go and our experts team will tell you what you need to do! 74-409 Exam Dumps Full Version Download:

**Compared Before Buying Micro**

Pass4sure	Braindu
	100% Pass OR
99 Q&As - Practice	105 Q&As - Real
\$124.99	\$99.99
No Discount	Coupon Code: B

<http://www.braindump2go.com/74-409.html>