

## Become Microsoft 70-689 Certified With Braindump2go's New 70-689 Test Dumps (281-290)

2015 Latest released Microsoft Official 70-689 Practice Exam Question Free Download From Braindump2go Now! All New Updated 299 Questions And Answers are Real Questions from Microsoft Exam Center! Vendor: Microsoft Exam Code: 70-689 Exam Name: Microsoft Upgrading Your Skills to MCSA Windows 8.1

**Compared Before Buying Microsoft 70-689 PDF & VCE!**

Pass4sure	Braindump2go	TestKing
	<b>100% Pass OR Money Back</b>	
Not In Stock	299 Q&As	Not In Stock
/	\$99.99	/
/	Coupon Code: <b>BDNT2014</b>	/

**QUESTION 281** Drag and Drop Question You administer Windows 8.1 client computers in your company network. A computer has a simple (no resiliency) storage space configured. The storage space is assigned to drive letter E. You plug an eSATA drive into the computer and extend the storage space. You need to unplug the eSATA drive without deleting existing data from the storage space. Which three actions should you perform in sequence? (To answer, move the appropriate three actions from the list of actions to the answer area and arrange them in the correct order.)

The screenshot shows an exam interface with two main sections: 'Actions' and 'Answer Area'. The 'Actions' list contains the following items:

- Open Storage Spaces.
- Select the **Change** action task.
- Select the **Shrink the volume** action task.
- Expand the Storage spaces group.
- Open Disk Management.
- Select drive E.
- Expand the Physical devices group.
- Select the **Remove** action task.

The 'Answer Area' is currently empty. A large watermark 'Braindump2go.com' is overlaid on the center of the interface.

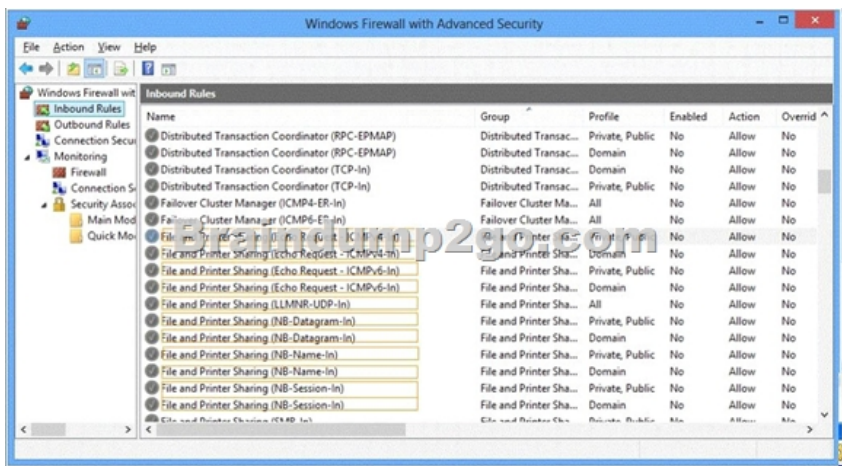
Answer:

The screenshot shows the same exam interface as above, but with the 'Answer Area' populated with three actions in a specific sequence. The 'Actions' list remains the same. The 'Answer Area' contains the following items:

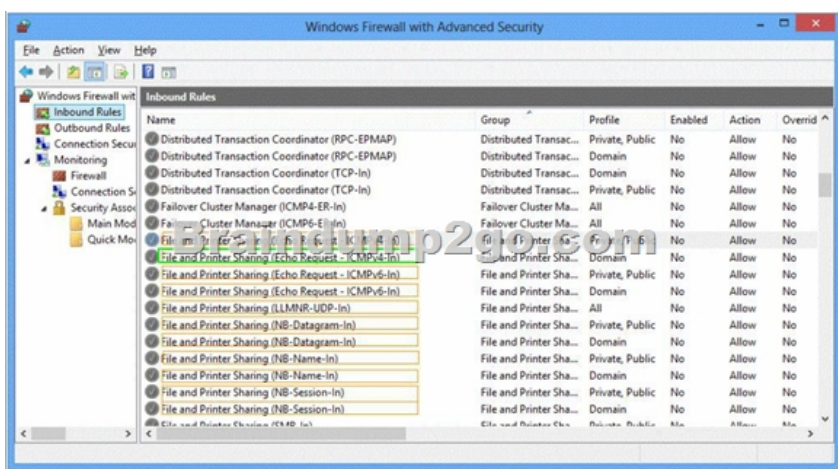
- Open Storage Spaces.
- Expand the Physical devices group.
- Select the **Remove** action task.

The correct actions are highlighted with green boxes in the 'Actions' list and red boxes in the 'Answer Area'. A large watermark 'Braindump2go.com' is overlaid on the center of the interface.

**QUESTION 282** Hotspot Question You administer Windows 8.1 client computers in your company network. The computers belong to an Active Directory Domain Services (AD DS) domain and have Windows Firewall enabled. All of the computers are connected to the Internet. You ping one of the desktops, which has an IP Address of 10.4.4.4, but you receive the message "Request timed out." You need to configure the desktop to reply on ping requests. From the Windows Firewall with Advanced Security window, which inbound rule should you modify? (To answer, select the appropriate inbound rule in the answer area.)



Answer:



QUESTION 283 Your company has a main office and a branch office. Each office contains several servers that run Windows Server 2012. You need to configure BranchCache for the client computers in the branch office. The solution must ensure that all of the cached content is in a central location. What should you run on each client computer?

A. the winrm command  
 B. the Enable-BCHostedClient cmdlet  
 C. the Enable-BCLocal cmdlet  
 D. the netdom command

Answer: B

QUESTION 284 Your company has a main office and a branch office. All servers are located in the main office. The branch office contains 20 client computers that are the members of a workgroup. You need to configure the client computers to use BranchCache. The solution must minimize the amount of traffic between the offices. Which Windows PowerShell cmdlet should you run?

A. Enable-BCLocal  
 B. Enable-BCHostedClient  
 C. Enable-BCHostedServer  
 D. Enable-BCDistributed

Answer: D

Explanation: Not sure.

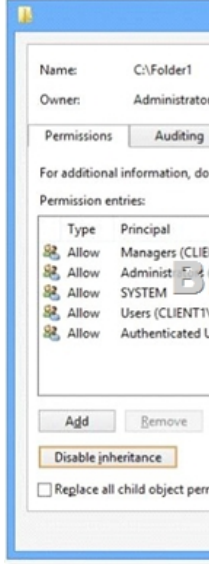
Enable-BCLocal: Sets up this client as a standalone BranchCache client; that is it will look in its own local cache for content which matches the hashes indicated by the server.

Enable-BCDistributed: Sets up this client to broadcast out to the local network looking for other potential Distributed BranchCache clients.

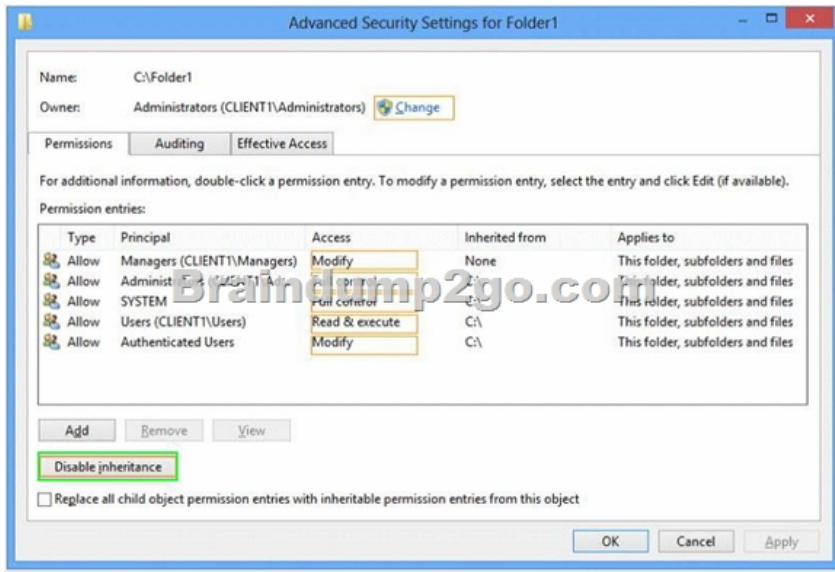
Enable-BCHostedClient: Sets up this client to look at a particular static server nominated to host the BranchCache cache. Required. Configures the BranchCache service to operate in one of the following modes. DISABLED disables the BranchCache service. LOCAL uses caching on the local computer only. DISTRIBUTED enables distributed cache mode, allowing authorized client computers in branch offices to download and republish content. HOSTEDSERVER configures the local computer as a hosted cache server. HOSTEDCLIENT configures the local computer as a hosted cache client. While you can use a local cache, the real benefits come from distributed and hosted mode, where the browsing actions of a single employee can benefit the whole office. For instance if Employee A and Employee B are sitting in the same office and both browse to the same site then most of the content for Employee B will be retrieved direct from Employee A's laptop rather than re-downloading from the server. That's really powerful particularly where there are bandwidth constraints in the office and common sites that are used by all employees. But it requires that the web server serving the content participates in the Branchcache protocol by installing the BranchCache feature.

QUESTION 285 You have a Windows 8.1 Pro desktop computer and a Windows RT 8.1 mobile device. You sign in to the computer and the device by using the same Microsoft account. You discover that the settings are not being synchronized between the Windows 8.1 computer and the Windows RT 8.1 device. You need to ensure that the settings are

synchronized. What should you do first?  
 A. From the PC settings page, modify the Privacy settings.  
 B. Enable the Configure Default consent Group Policy setting.  
 C. Enable the Trusted Hosts Group Policy setting.  
 D. From the PC settings page, click Trust this PC.  
 Answer: D  
**QUESTION 286** Hotspot Question  
 You administer Windows 8.1 Pro computers in your company network, including a computer named Client1. On Client1, you create a new folder named C:\Folder1 and configure its NTFS permissions. You need to ensure that only members of a group named Managers can access the folder content. In the Advanced Security Settings for Folder1 pane, which security setting should you configure? (To answer, select the appropriate setting in the answer area.)



Answer:



**QUESTION 287** Hotspot Questions  
 Your company has several Windows RT 8.1 devices that run. The devices connect to Exchange Online in Microsoft Office 365 and to Windows Intune for device management. The security policies of Office 365 and Windows Intune are configured as shown in the following table.

Setting name	Local device setting	Windows Intune setting	Exchange Online setting
Require a password to unlock mobile devices	Not configured	No	Yes
Required password type	Not configured	Numeric	Alphanumeric
Minimum password length	Not configured	6	4
Allow simple passwords	Not configured	No	Yes
Minutes of inactivity before device screen is locked	Not configured	10	15

You need to identify the effective settings on the Windows RT devices. What should you identify? (To answer, select the appropriate effective configuration for each setting in the answer area.)

Answer Area

Require a password to unlock mobile devices:

Required password type:

Minimum password length:

Allow simple passwords:

Minutes of inactivity before device screen is locked:

Answer:

Answer Area

Require a password to unlock mobile devices:

Required password type:

Minimum password length:

Allow simple passwords:

Minutes of inactivity before device screen is locked:

QUESTION 288 Hotspot Questions You have five client computers that are configured as shown in the following table.

Computer name
Computer1
Computer2
Computer3
Computer4
Computer5

You verify that each computer supports the installation of the 64-bit version of Windows 8.1 Pro. You need to identify which method to use to deploy the 64-bit version of Windows 8.1 Pro to each computer. The solution must minimize the need to reinstall applications and to reconfigure settings. In the table below, identify the correct deployment method for each computer. Make only one selection in each row. Each correct selection is worth one point.

**Answer Area**

Computer name	In-place upgrade	Clean installation
Computer1	<input type="radio"/>	<input type="radio"/>
Computer2	<input type="radio"/>	<input type="radio"/>
Computer3	<input type="radio"/>	<input type="radio"/>
Computer4	<input type="radio"/>	<input type="radio"/>
Computer5	<input type="radio"/>	<input type="radio"/>

Answer: **Answer Area**

Computer name	In-place upgrade	Clean installation
Computer1	<input type="radio"/>	<input checked="" type="radio"/>
Computer2	<input type="radio"/>	<input checked="" type="radio"/>
Computer3	<input checked="" type="radio"/>	<input type="radio"/>
Computer4	<input type="radio"/>	<input checked="" type="radio"/>
Computer5	<input checked="" type="radio"/>	<input type="radio"/>

QUESTION 289 You have several client computers that run Windows 7 Enterprise. You plan to configure the computers to dual-boot to Windows 8.1 Enterprise by using a native boot VHD. You have a VHD file that contains an installation of Windows 8.1 Enterprise. You need to inject several device drivers into the VHD file. Which tool should you use? A. Bcdboot B. Pkgmgr C. Dism D. Bcdedit  
 Answer: C  
 Explanation: Dism /image:V: /Add-Driver /driver:C:drivers\mydriver.INF Multiple drivers can be also added with one set of commands, if you specify a folder instead of an .inf file. To install all the drivers in a folder and all its subfolders, use the /recurse option. For example, at the command prompt, type: Dism /image:V: /Add-Driver /driver:C:drivers /recurse  
[http://technet.microsoft.com/en-us/library/dd799267\(v=ws.10\).aspx#BKMK\\_addDrivers](http://technet.microsoft.com/en-us/library/dd799267(v=ws.10).aspx#BKMK_addDrivers)

QUESTION 290 Your network contains an Active Directory domain and 100 Windows 8.1 client computers. All software is deployed by using Microsoft Application Virtualization (App-V) 5.0. Users are NOT configured as local administrators. Your company purchases a subscription to Microsoft Office 365 that includes Office 365 ProPlus. You need to create an App-V package for Office 365 ProPlus. What should you do? A. Download the Office Deployment Tool for Click-to-Run, run the App-V Sequencer and then run Setup /Admin. B. Run the Office Customization Tool (OCT), run the App-V Sequencer and then run Setup /Packager. C. Download the Office Deployment Tool for Click-to-Run, run Setup /Download and then run Setup /Packager. D. Run the Office Customization Tool (OCT), run Setup /Download and then run the App-V Sequencer.  
 Answer: C  
 Explanation: You can use the Office Deployment Tool commands to do the following: Specify the mode in which to run the Office Deployment Tool. Use "download" mode to download Click-to-Run installation source for Office 365 products and languages to an on premise location. Use "configure" mode to configure, and install Click-to-Run for Office 365 products and languages. Use "packager" mode to create an App-V package from a Click-to-Run installation source. Indicate the location of the custom Configuration.xml file. Display Help for the tool. The Office 2013 release supports the following Office Deployment Tool command-line properties: - download - configure - packager - help  
[http://technet.microsoft.com/en-us/library/jj219422\(v=office.15\).aspx](http://technet.microsoft.com/en-us/library/jj219422(v=office.15).aspx)  
 In App-V 5.0 and later, you must use the Office Deployment Tool to create a package. You cannot use the Sequencer to create packages.

[http://technet.microsoft.com/en-us/library/dn481351.aspx#BKMK\\_create\\_Office\\_pkg](http://technet.microsoft.com/en-us/library/dn481351.aspx#BKMK_create_Office_pkg) Braindump2go Offers PDF & VCE Dumps Download for New Released Microsoft 70-689 Exam! 100% Exam Success Guaranteed OR Full Money Back Instantly!

<b>Compared Before</b>
<b>Pass4sure</b>
<b>Not In Stock</b>
/
/

<http://www.braindump2go.com/70-689.html>