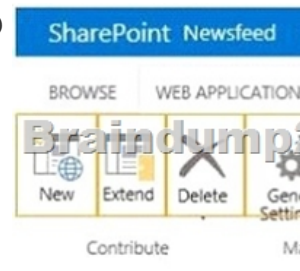


[Aug.-2016-NEW] High Quality 70-331 VCE PDF Braindump 209Q&As Free Share[NQ56-NQ65]

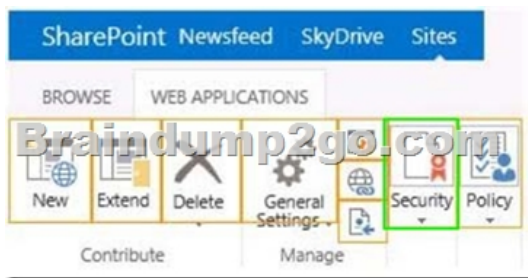
2016/08 Microsoft Official News: 70-331 Exam Questions Updated Today! Free 70-331 PDF & 70-331 VCE Dumps Shared by Braindump2go.com Now! 100% Real Exam Questions! 100% Pass Guaranteed! 1. | 2016/08 New 70-331 PDF & 70-331 VCE 209Q&As: <http://www.braindump2go.com/70-331.html> 2. | 2016/08 70-331 New Exam Questions: <https://drive.google.com/folderview?id=0B75b5xYLjSSNZ2ZEQ3RCMwVUWUU&usp=sharing> New Question 56 - New Questions 65 QUESTION 56 Hotspot Question A SharePoint environment was set up by using an automated installation script. Corporate policies prevent the use of wizards for installing and configuring server environments. You plan to provide navigation based on term sets. You need to ensure that you can create the term sets. Which service should you configure? (To answer, select the appropriate service in the answer area.)



QUESTION 57 You are managing a SharePoint farm in an Active Directory Domain Services (AD DS) domain. You need to configure a service account to use domain credentials. What should you do first? A. Configure the service account to use a domain user account. B. Register the domain credentials in the Farm Administrators group. C. Configure the service account to use a local user account. D. Register the domain credentials as a SharePoint managed account. Answer: D QUESTION 58 Hotspot Question You are managing web applications on a SharePoint site. You need to begin configuring anonymous access for a SharePoint web application. Which command should you select? (To answer, select the appropriate command in the answer area.)



Answer:



QUESTION 59 Hotspot Question You create a SharePoint site for collaboration with external partners. The network team configures the reverse proxy server and publishes the SharePoint site. Partners cannot sign in to the SharePoint site. You need to ensure that partners can access the SharePoint site. In Central Administration, on which page should you configure the settings? (To answer, select the appropriate page in the answer area.)



Answer:



QUESTION 60 Drag and Drop Question A company has a single Active Directory Domain Services (AD DS) forest that contains two domains named tailspintoys.com and wingtiptoys.com. The company has a SharePoint environment in the tailspintoys.com domain. You need to ensure that SharePoint search services use SharePoint managed accounts. Which three actions should you

perform in sequence? (To answer, move the appropriate actions from the list of actions to the answer area and arrange them in the correct order.)



Answer:



QUESTION 61A company named Contoso, Ltd. has a SharePoint farm. The farm has one Search service application configured. The Search service application contains five crawl databases, all of which contain content. Contoso plans to crawl knowledge base content from its partner company Litware, Inc. The knowledge base content must be stored in a dedicated crawl database. You need to configure crawling. What should you do? A. Add a crawl database that contains the Litware knowledge base to the existing Search service application. B. Provision a new Search service application. Configure the service application to crawl the Litware knowledge base content. C. Set the MaxCrawlDatabase parameter to 6. D. Create a dedicated Microsoft SQL Server instance for the Litware crawl database. Answer: B Explanation: The maximum number of crawl databases is 5 per Search service application so we need another Search service application. This maximum limit is increased to 15 with an Office 2013 update but the question doesn't mention that this update is installed so we have to assume the question was written before the update was released.

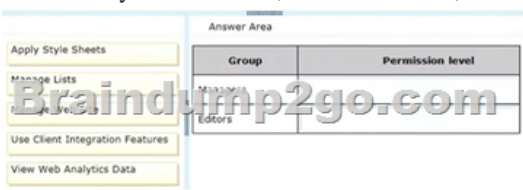
QUESTION 62 Hotspot Question The application log in the Windows Event Viewer shows object caching errors. You resolve the errors by modifying a web application in the farm. After you resolve the errors, users are unable to access sites in the web application. You need to restore user access to the sites. On the Manage Web Applications page, which option should you configure? (To answer, select the appropriate option in the answer area.)



Answer:



QUESTION 63 Drag and Drop Question You are configuring permission levels for two user groups named Architects and Sales. You have the following requirements for SharePoint site permissions: - Architects must be able to view website usage reports. - Sales must be able to edit documents online. You need to configure the appropriate permission levels for each group. Which permission levels should you assign? (To answer, drag the appropriate permission levels to the correct group or groups in the answer area. Each permission level may be used once, more than once, or not at all. You may need to drag the split bar between panes or scroll to view content.)



Answer:



QUESTION 64A company uses SharePoint 2013 Server as its intranet portal. The Marketing department publishes many news articles, press releases, and corporate communications to the intranet home page. You need to ensure that the Marketing department pages do not impact intranet performance. Which two actions should you perform? (Each correct answer presents part of the solution. Choose two.) A. In Central Administration, set up a User Policy for the Super User and Super Reader accounts. B. Configure IIS to use the Super User and Super Reader accounts for caching. C. Use the Farm Configuration Wizard to configure the Super User and Super Reader accounts. D. Use Windows PowerShell to add the Super User and Super Reader accounts. Answer: AD

Explanation: A: The way to correct this problem is to first create two normal user accounts in AD. These are not service accounts.

You could call them domainsuperuser and domainsuperreader, but of course that's up to you. The domainsuperuser account needs to have a User Policy set for that gives it Full Control to the entire web application. D: If you are using any type of claims based authentication you will need to use Windows PowerShell. And Windows PowerShell is the hipper more modern and sustainable option anyway. If you are using classic mode authentication run the following cmdlets on one of your SharePoint servers:

```
$w = Get-SPWebApplication "http://<server>/" $w.Properties["portalsuperuseraccount"] = "domainsuperuser"
$w.Properties["portalsuperreaderaccount"] = "domainsuperreader" $w.Update()
If you are using claims based authentication run these cmdlets on one of your SharePoint servers:
$w = Get-SPWebApplication "http://<server>/"
```

```
$w.Properties["portalsuperuseraccount"] = "i:0#.w|domainsuperuser" $w.Properties["portalsuperreaderaccount"] =
```

```
"i:0#.w|domainsuperreader" $w.Update()
Note: * If you have a SharePoint Publishing site and you check the event viewer every once
```

in a while you might see the following warning in there: Object Cache: The super user account utilized by the cache is not configured. This can increase the number of cache misses, which causes the page requests to consume unnecessary system resources. To configure the account use the following command:

```
stsadm -o setproperty -propertyname portalsuperuseraccount -propertyvalue account -url webappurl'
```

The account should be any account that has Full Control access to the SharePoint databases but is not an application pool account. Additional Data: Current default super user account: SHAREPOINT\system This means that the cache accounts for your web application aren't properly set and that there will be a lot of cache misses. If a cache miss occurs the page the user requested will have to be build up from scratch again. Files and information will be retrieved from the database and the file system and the page will be rendered. This means an extra hit on your SharePoint and database servers and a slower page load for your end user. Reference: Resolving "The super user account utilized by the cache is not configured."

QUESTION 65 You are managing a SharePoint farm. Diagnostic logs are rapidly consuming disk space. You need to minimize the amount of log data written to the disk. Which two actions should you perform? (Each correct answer presents part of the solution. Choose two.) A. Set the log event level to Information. B. Set the log event level to Verbose. C. Set the log trace level to Medium. D. Set the log trace level to Verbose. E. Set the log event level to Warning. F. Set the log trace level to Monitorable. Answer: EF

Explanation: E: Event Levels Warning, Level ID 50 Information, Level ID: 80 Verbose, Level ID: 100 F: Trace levels: Monitorable: 15 Medium: 50 Verbose: 100 Note: When using the Unified Logging System (ULS) APIs to define events or trace logs, one of the values you must supply is the ULS level. Levels are settings that indicate the severity of an event or trace and are also used for throttling, to prevent repetitive information from flooding the log files. Reference: Trace and Event Log Severity Levels !!! Recommend!!!

1. | Braindump2go 2016/08 New 70-331 PDF & 70-331 VCE 209Q&As Download: <http://www.braindump2go.com/70-331.html> 2. | Braindump2go

2016/08 70-331 New Exa Questions:

<https://drive.google.com/folderview?id=0B75b5xYLjSSNZ2ZEQ3RCMWVUWUU&usp=sharing>