

70-689 New Updated Exam Dumps Version Released By Braindump2go for Free Download Now! (141-150)

2015 Timesaving Comprehensive Guides For Microsoft 70-689 Exam: Using Latst Released Braindump2go 70-689 Practice Tests Questions, Quickly Pass 70-689 Exam 100%! Following Questions and Answers are all the New Published By Microsoft Official Exam Center! Vendor: MicrosoftExam Code: 70-689Exam Name: Microsoft Upgrading Your Skills to MCSA Windows 8.1

Compared Be

Pass4sure

Not In Stock

/

/

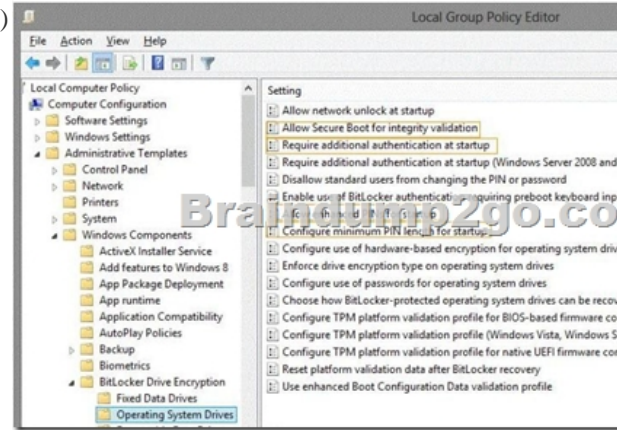
QUESTION 141A company has client computers that run Windows 8 in a kiosk environment. You need to ensure that Windows updates are automatically applied and cannot be disabled by users. What should you do? A. Configure Windows Update to install updates automatically.B. In the local Group Policy, enable the Turn on recommended updates via Automatic Updates policy setting.C. `msiexec /i app1.msi /qnD`. In the local Group Policy, configure the Remove access to use all Windows Update features policy setting. Answer: DExplanation:<http://technet.microsoft.com/en-us/library/cc775792%28v=ws.10%29.aspx>Turn off access to all Windows Update features:This Group Policy setting is located in Computer ConfigurationAdministrative TemplatesSystemInternet Communication ManagementInternet Communication settings. When you enable this setting, the operating system cannot be updated through Windows Update, and Automatic Updates is disabled. Users or administrators can still perform actions such as clicking the Windows Update option on the Start menu, and the Windows Update Web site will appear in the browser. However, it will not be possible to update the operating system through Windows Update, regardless of the type of account being used to log on. I think that is exactly what we want to happen in a kiosk environment. Kiosk Computers will still be able to receive their updates from a WSUS server. QUESTION 142You administer client computers in your company network. The network includes an Active Directory Domain Services (AD DS) domain. Employees in the human resources (HR) department are getting new Windows 8 Enterprise computers. The HR department uses a line of business (LOB) Windows Store app named Timesheet that is not available in Windows Store. You need to ensure that all employees in the HR department can use Timesheet on their new computers. What should you do? A. Use a Microsoft account to log on to each computer.B. Use a local account to log on to each computer.C. Activate the sideloading product key on each computer.D. Install and run the Windows App Certification Kit. Answer: A QUESTION 143You use a Windows 8 Pro computer. The computer stores research data in a folder named C:Research. You turn on File History. You need to back up the Research folder. What should you do? A. Create a new library and include the folder in the library.B. Create a new volume mount point in the root of the folder.C. Create a new storage space and move the folder to the storage space.D. Create a new restore point. Answer: C QUESTION 144Drag and Drop QuestionsA company plans to upgrade its client computer operating systems from Windows 7 to Windows 8. You need to use the User State Migration Tool (USMT) to configure the migration profile to exclude all files in the users' Documents folders. Which command should you run on the client computers before the upgrade? (To answer, drag the appropriate command elements to the correct location or locations in the answer area. Each command may be used once, more than once, or not at all. You may need to drag the split bar between panes or scroll to view content.)

Commands	Answer Area
<code>config.xml</code>	Command
<code>/genconfig:</code>	Command
<code>/i:</code>	Command
<code>migapp.xml</code>	
<code>migdocs.xml</code>	
<code>miguser.xml</code>	
<code>scanstate</code>	
<code>loadstate</code>	

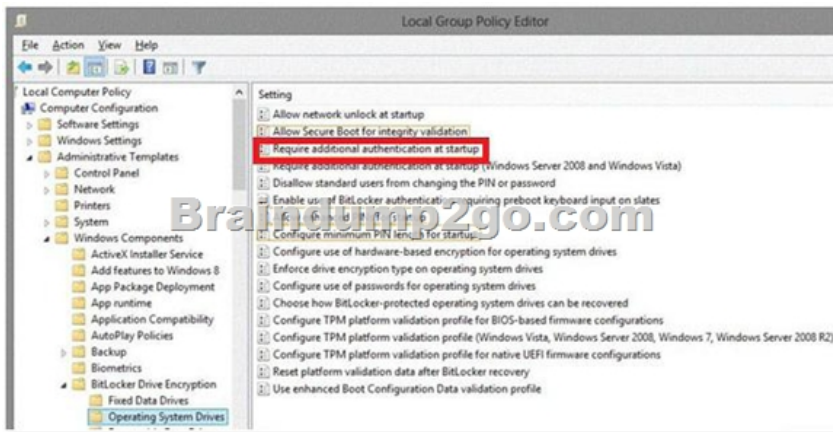
Answer:



QUESTION 145 Hotspot Questions You administer Windows 8 computers in your company network. All computers include Windows 8 compatible Trusted Platform Module (TPM). You configure a computer that will run a credit card processing application. You need to ensure that the computer requires a user to enter a PIN code when starting the computer. Which policy should you configure? (To answer, select the appropriate policy in the answer area.)



Answer:

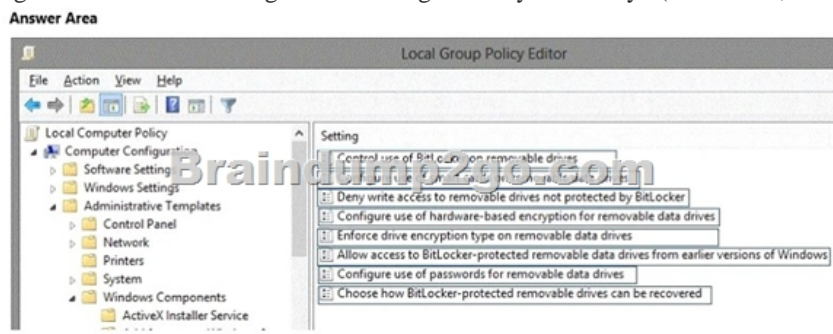


QUESTION 146 You administer Windows 8 client computers in your company network. A guest at your company is connected to the Internet as shown in the following exhibit. (Click the Exhibit button.) You need to ensure that the guest user is able to share network resources over Wi-Fi without lowering the overall security of the computer. What should you do?

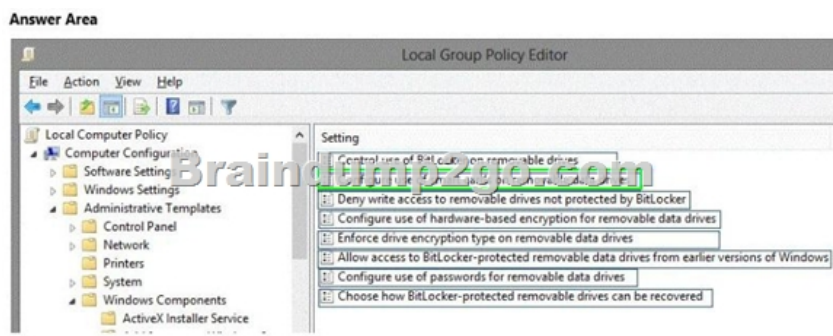


- A. Change the network location type to Work.
 - B. Configure File sharing connections settings for All networks.
 - C. Change the network location type to Private.
 - D. Configure File and printer sharing settings for Public networks.
- Answer: C
- QUESTION 147 A company has client computers that run Windows 8. When a user tries to print from his portable client computer while connected to the corporate network, he discovers that the default printer is set to his home printer instead of to the office printer. You need to ensure that the default printer for the computer is the office printer when the computer is connected to the corporate network and the user's home printer when the computer is connected to his home network. What should you do on the portable computer?
- A. In the printer properties of the corporate printer, configure the active port with the correct TCP/IP settings for the printer.
 - B. Install the corporate printer and set it as the default printer. Then add the home printer to the homegroup settings.
 - C. Connect to the home network and choose Connect from the shared printer object context menu. Then connect to the corporate network and choose

Connect from the shared printer object context menu.D. Set a default printer for each network. Answer: D QUESTION 148
Hotspot Questions You administer Windows 8.1 computers in your company network. The security policies of the company require that USB storage devices are allowed only if they are protected with BitLocker To Go. You need to prevent users from removing BitLocker encryption from the USB storage devices. Which configuration setting should you modify? (To answer, select the appropriate setting in the answer area.)



Answer: Answer Area



QUESTION 149 You install Windows 8 on a client computer. Several days later, you establish that the computer has been infected by malware. You are unable to establish when the computer was infected. You need to restore the client computer to full functionality. What should you do? A. Start the computer using the Last Known Good Configuration option. B. Use the Refresh your PC without affecting your files function. C. Start the computer in Safe Mode. D. Use the Remove everything and install Windows function. Answer: D QUESTION 150 A company has client computers that run Windows 8. Each employee has one client computer at the office. Some employees also have personal computers at home. The company has applications that run only on Windows 8. You need to deploy Windows To Go so that employees can run the applications on their home computers. Which two command-line tools should you use? (Each correct answer presents part of the solution. Choose two.) A. bcdedit B. DISM C. bcdboot D. ImageX Answer: BC Explanation: See step 12 and 13 below. Create Windows To Go on any edition of Windows 8: 1. Launch an administrative level command prompt. 2. Make sure that your USB Drive is plugged in and then type in diskpart and hit Enter. 3. List the available disks by running "list disk" and you should see your usb device. 4. Select your USB drive by typing "select disk #" and hit Enter. For example, "select disk 3". 5. Clean the partitions on the disk by typing "clean" and hit Enter. 6. Now create the boot partition by running the following command: create partition primary size=3507. Now create the OS partition by running the following command to create a partition taking up all remaining space: create partition primary. 7. The boot partition needs to be formatted, configured and assigned a drive letter, run the following commands: - select partition 1 - format fs=fat32 quick - active - assign letter=b (if the b drive letter is already in use on your PC, substitute a different letter and replace b with your letter throughout the rest of this guide) 8. The same must be done for the OS partition, run the following different commands: - select partition 2 - format fs=ntfs quick - assign letter=o (if the o drive letter is already in use on your PC, substitute a different letter and replace o with your letter throughout the rest of this guide) 9. Exit Diskpart by typing Exit. 10. Extract the install.wim file from the sources directory of the Windows 8 install ISO to c:wim. On Windows 8 you can just double click an ISO to mount and then browse it. 11. Use DISM to deploy the Windows 8 files to the OS partition of the USB device by running: dism /apply-image /imagefile:c:wim\install.wim /index:1 /applydir:o. 12. The boot manager needs to be installed on the boot partition with the help of the bcdboot utility. Run the following command: o:windowssystem32bcdboot o:windows /f ALL /s b. 13. Reboot your computer and test your new Windows 8 To Go device built on Windows 8. Make sure the PC is configured to boot to USB before your local hard drive. Reference: How to Create a Windows To Go USB Drive Latest 70-689 Questions and Answers from Microsoft Exam Center Offered by Braindump2go for Free Share Now! Read and remember all Real Questions Answers, Guaranteed Pass 70-689 Real Test

100% Or Full Money Back!

Compared Before Buying Microsoft 70-689 PDF & VCE!		
Pass4sure	Braindump2go	TestKing
	100% Pass OR Money Back	
Not In Stock	299 Q&As	Not In Stock
/	\$99.99	/
/	Coupon Code: BDNT2014	/

<http://www.braindump2go.com/70-689.html>