

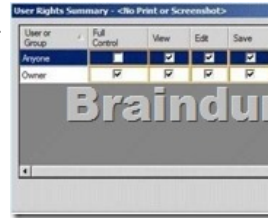
70-342 Exam Dumps PDF&VCE Free Download From Braindump2go (91-100)

2015 Latest 70-342 Real exam questions to master and practice upon! Braindump2go Offers the New Updated Microsoft 70-342 155 Exam Questions in PDF & VCE files that can also be downloaded on every mobile device for preparation! Vendor: Microsoft Exam Code: 70-342 Exam Name: Microsoft Advanced Solutions of Microsoft Exchange Server 2013 Keywords: 70-342 Exam Dumps, 70-342 Practice Tests, 70-342 Practice Exams, 70-342 Exam Questions, 70-342 PDF, 70-342 VCE Free, 70-342 Book, 70-342 E-Book, 70-342 Study Guide, 70-342 Braindump, 70-342 Prep Guide

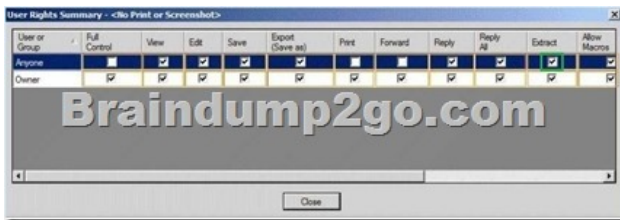
Compared Before Buying Microsoft 70-342 PDF & VCE!

Pass4sure	Braindump2go 100% Pass OR Money Back	Test King
146 Q&As - Practice	155 Q&As - Real Questions	126 Q&As - Practice
\$124.99	\$99.99	971 HKD
No Discount	Coupon Code: BDNT2014	No Discount

QUESTION 91 The Internet link in the Tampa office will be unavailable during the weekend. You need to ensure that all outbound email messages are sent from the Charlotte office during the planned outage. What should you do? A. Modify the cost of the Tampa SMTP Send connector. B. Create a new mail exchanger (MX) record named SMTP2.fabrikam.com in the internal DNS zone. C. Modify the smart host of the Tampa SMTP Send connector. D. Modify the preference value of the fabrikam.com mail exchanger (MX) records. Answer: C Explanation: Sometimes you need to route all your outbound emails through a SMTP smart host and not route them directly to the internet. From scenario: * A Send connector named Tampa SMTP that uses SMTP1 as a smart host. The cost of the Tampa SMTP connector is 10. * Mailbox servers in the Tampa office that provide outbound SMTP services to the Internet. * An SMTP relay device named SMTP1 in the Tampa office. QUESTION 92 Hotspot Question You need to resolve the IRM template issue. Which user right should you modify? To answer, select the appropriate user right in the answer area.



Answer:



Explanation: I believe previous answer of Export is wrong. It appears this should be Extract. IRM in Outlook Web App can't prevent users from taking screen captures by using Print Screen functionality in the way Outlook and other Office applications do. This impacts the EXTRACT right, which prevents message content from being copied, if specified in the AD RMS rights policy template. [http://technet.microsoft.com/en-us/library/dd876891\(v=exchg.150\).aspx](http://technet.microsoft.com/en-us/library/dd876891(v=exchg.150).aspx)

<http://technet.microsoft.com/en-us/library/cc179103.aspx> QUESTION 93 You need to recommend a solution for the HR voice mail. The solution must meet the security requirements. What should you recommend? A. Create a UM mailbox policy and associate the policy to UM1. Configure the voice mail protection settings of the UM mailbox policy. Create an auto attendant and link the auto attendant to UM1. B. Create a UM mailbox policy and associate the policy to a new dial plan. Configure the voice mail protection settings of the UM mailbox policy. Create an auto attendant and link the auto attendant to the new dial plan. C. Create a UM mailbox policy and associate the policy to a new dial plan. Configure the voice mail protection settings of the UM mailbox policy. Assign the UM mailbox policy to the mailbox of the HR department. D. Create a UM mailbox policy and associate the policy to UM1. Configure the voice mail protection settings of the UM mailbox policy. Assign the UM1 mailbox policy to the mailbox of the HR department. Answer: D Explanation: <http://technet.microsoft.com/en-us/library/dd351041%28v=exchg.150%29.aspx> * Scenario: Use Information Rights Management (IRM) to protect all of the voice mails left for the telephone number of the human resource

(HR) department./ There is a UM dial plan named UM1.* The Protected Voice Mail feature is available with Exchange 2010 and later versions of Unified Messaging (UM). It can be configured on a UM mailbox policy.* By default, a single UM mailbox policy is created every time you create a UM dial plan.The new UM mailbox policy is automatically associated with the UM dial plan, and part of the dial plan name is included in the display name of the UM mailbox policy. You can edit this default UM mailbox policy. You can create additional UM mailbox policies to apply a common set of settings for groups of users. QUESTION 94 You need to recommend an Outlook protection rule solution to meet the technical requirements.What should you recommend? A. Create an Outlook protection rule and filter the rule based on the FromDepartment property. Apply the Do Not Forward protection template to the rule and enable the UserCanOverride setting.B. Create an Outlook protection rule and filter the rule based on the FromDepartment property. Apply the Do Not Forward protection template to the rule and disable the UserCanOverride setting.C. Create an Outlook protection rule and filter the rule based on the SentTo property. Apply the Do Not Forward protection template to the rule and disable the UserCanOverride setting.D. Create an Outlook protection rule and filter the rule based on the SentTo property. Apply the Do Not Forward protection template to the rule and enable the UserCanOverride setting. Answer: B Explanation: * Scenario: Prevent the forwarding of email messages sent by users who have a value of Legal in their Department field.* Use FromDepartment property and do not allow the user to override.



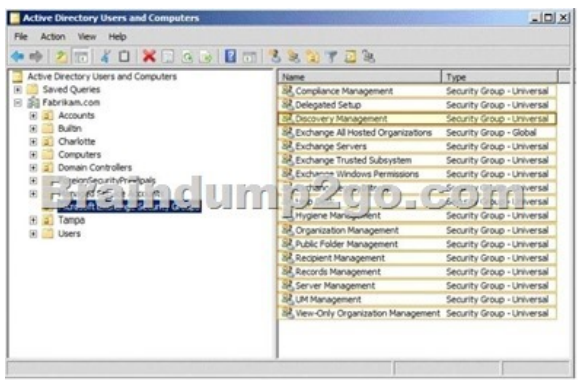
<http://technet.microsoft.com/en-us/library/dd638178%28v=exchg.150%29.aspx> QUESTION 95 Hotspot Question You plan to create two retention tags named Tag1 and Tag2. Tag1 will be used to move email messages to the Archive mailbox. Tag2 will be used to delete the email messages. You need to identify which settings must be configured in the retention tags to meet the technical requirements.How should you configure each retention tag? To answer, configure the appropriate options for each retention tag setting in the answer area.

Setting	Tag1	Tag2
Retention tag type	All Inbox Personal	All Inbox Personal
Retention action	Permanently Delete Delete and allow recovery	Move to archive mailbox
Retention period	After 30 days After 335 days After 365 days	After 30 days After 335 days After 365 days

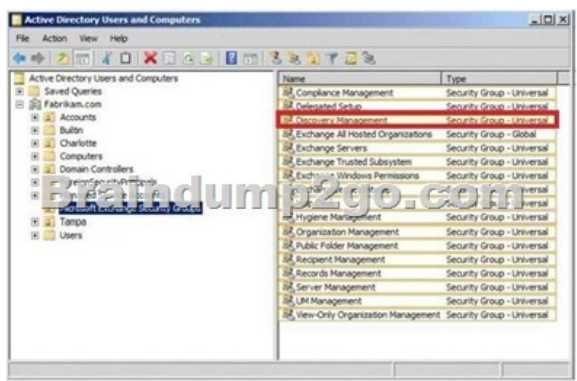
Answer:

Setting	Tag1	Tag2
Retention tag type	All Inbox Personal	All Inbox Personal
Retention action	Permanently Delete Delete and allow recovery	Move to archive mailbox
Retention period	After 30 days After 335 days After 365 days	After 30 days After 335 days After 365 days

QUESTION 96 Hotspot Question You need to ensure that the HR1 group can perform the tasks required to meet the technical requirements. To which group should you add HR1? To answer, select the appropriate group in the answer area.



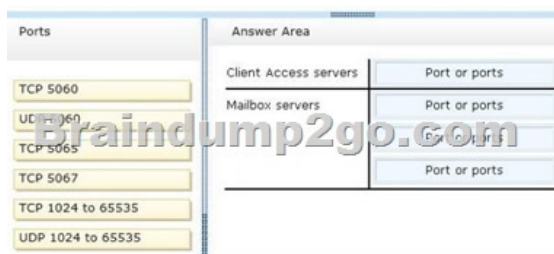
Answer:



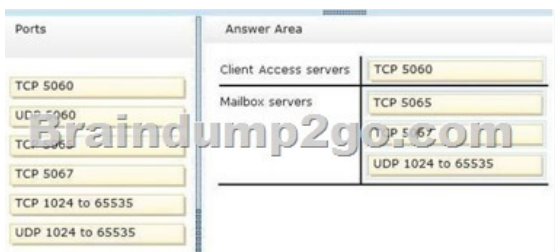
Explanation: <http://technet.microsoft.com/en-us/library/dd351080%28v=exchg.150%29.aspx> QUESTION 97 You are evaluating the implementation of the planned static IP addresses for DAG1. You need to identify the appropriate IP addresses for DAG1. Which two IP addresses should you identify? (Each correct answer presents part of the solution. Choose two.) A. 169.254.0.10B.

192.168.1.10C. 192.168.2.10D. 192.168.10.10E. 192.168.20.10F. 224.0.0.10 Answer: BDE Explanation: * Scenario: / Assign a static IP address to DAG1. / A database availability group (DAG) named DAG1 that contains EX2, EX3, EX5, and EX6. DAG1 is configured to use DHCP to obtain an IP address. / Subnet 192.168.1.0/24 and subnet 192.168.10.0/24 are assigned as the MAPI network. * A DAG network is a collection of one or more subnets used for either replication traffic or MAPI traffic. Each DAG contains a maximum of one MAPI network and zero or more replication networks. 192.168.1.10 and 192.168.10.10 for MAPI connection subnet. 192.168.2.10 and 192.168.20.10 routeable too and suitable for replication traffic. The question however doesn't state that you need a separate replication network. Therefore, B & D

<http://technet.microsoft.com/en-us/library/dd638104%28v=exchg.150%29.aspx> QUESTION 98 Drag and Drop Question The security department implements a new firewall between the IP-PBX system and the servers in the Tampa office. You discover that SIP sessions cannot be established between the IP-PBX and EX1. You need to identify which ports must be opened between the IP-PBX and the Exchange Server 2013 servers. Which ports should you identify? To answer, drag the appropriate port or ports to the correct group of servers in the answer area. Each port or ports may be used once, more than once, or not at all. Additionally, you may need to drag the split bar between panes or scroll to view content.



Answer:



Explanation: You can configure the TCP port that's used to listen for Session Initiation Protocol (SIP) requests on a Unified Messaging (UM) IP gateway. By default, when you create a UM IP gateway, the TCP SIP listening port number is set to 5060. The Microsoft Exchange Unified Messaging service and the UM worker process use multiple Transmission Control Protocol (TCP) and User Datagram Protocol (UDP) service ports to communicate with IP gateways. The Microsoft Exchange Unified Messaging service and the UM worker process use Session Initiation Protocol (SIP) over TCP. By default, the Microsoft Exchange Unified Messaging service listens on both TCP port 5060 in Unsecured mode and TCP port 5061 when mutual Transport Layer Security (mutual TLS) is used. Each UM worker process that's created listens on port 5065 and 5067 (unsecured) and 5066 and 5068 (secured). But when an IP gateway or IP PBX sends Realtime Transport Protocol (RTP) traffic to the Speech Engine service worker process, the IP gateway or IP PBX will use a valid UDP port that ranges from 1024 through 65535.

[http://technet.microsoft.com/en-us/library/jj150516\(v=exchg.150\).aspx#ports](http://technet.microsoft.com/en-us/library/jj150516(v=exchg.150).aspx#ports)

Protocol	Port	Explanation
SIP	TCP 5060 (unsecured) TCP 5061 (secured)	Microsoft Exchange Unified Messaging Call Router service listening for SIP connections
SIP	TCP 5062 (unsecured) TCP 5063 (secured) TCP 5065-5067 (unsecured)	Microsoft Exchange Unified Messaging service listening for redirected SIP connections
SIP	TCP 5066 or 5068 (secured)	Microsoft Exchange Unified Messaging service connections with SIP peers
RTP	UDP 1024 to 65536	Microsoft Exchange Unified Messaging service connections with RTP peers

QUESTION 99 You have a hybrid deployment of Exchange Server 2013 and Microsoft Office 365. The Exchange Server organization has a mailbox size limit of 2 GB. You need to provide engineers with the ability to retain certain email messages indefinitely. The solution must meet the following requirements:- Ensure that the engineers can access the retained email messages by using Outlook Web App. - Ensure that the retained email messages do not apply to the mailbox size limit of the engineers. - Minimize the storage requirements of the on-premises servers. Which two actions should you perform? (Each correct answer presents part of the solution. Choose two.) A. From Office 365, create Archive mailboxes. B. Instruct the engineers to create a personal folder. C. Create a retention policy. D. From the on-premises Exchange Server 2013 organization, create Archive mailboxes. E. Create a data loss prevention (DLP) policy. Answer: ACE Explanation: Option "A" appears to be the correct answer because it says: "Minimize the Storage Requirements of the On-Premises Servers" The correct answers should be A. & C. A. From Office 365, create Archive Mailboxes C. Create a Retention Policy. If you select option D. as it was answered in the dump, then you are not meeting the requirements: Minimize the Storage Requirements of the On-Premises Servers C:

Retention Policy
Delete after 1 month (30 days)
Delete after 1 week (1 week)
Delete after 1 year (1 year)
Delete after 10 years (10 years)
Delete after 2 days (2 days)
Delete after 2 years (2 years)
Delete after 3 months (90 days)
Delete after 3 years (3 years)
Delete after 5 years (5 years)
Use Folder Policy
More Retention Policies...

D: In Exchange Server an archive mailbox is a second mailbox provisioned for a user that is separate to their primary user mailbox.

QUESTION 100 You have a database availability group (DAG). The DAG is configured as shown in the following table.

Servename	Site
EX1	Site1
EX2	Site1
EX3	Site1
EX4	Site2
EX5	Site2

You need to prevent a split-brain condition if a restore operation of the DAG occurs. What should you do? A. Deploy an alternate witness server to each site. B. Modify the Datacenter Activation Coordination (DAC) mode. C. Set the quorum model of the cluster to Node and Disk Majority. D. Deploy another Mailbox server to Site2. Answer: B
Explanation: Datacenter Activation Coordination (DAC) mode is a property setting for a database availability group (DAG). DAC mode is disabled by default and should be enabled for all DAGs with two or more members that use continuous replication. If a catastrophic failure occurs that affects the DAG (for example, a complete failure of one of the datacenters), DAC mode is used to control the startup database mount behavior of a DAG. When DAC mode isn't enabled and a failure occurs that affects multiple servers in the DAG, and then when a majority of the DAG members are restored after the failure, the DAG will restart and attempt to mount databases. In a multi-datacenter configuration, this behavior could cause split brain syndrome, a condition that occurs when all networks fail, and DAG members can't receive heartbeat signals from each other. Split brain syndrome can also occur when network connectivity is severed between datacenters. Split brain syndrome is prevented by always requiring a majority of the DAG members (and in the case of DAGs with an even number of members, the DAG's witness server) to be available and interacting for the DAG to be operational. When a majority of the members are communicating, the DAG is said to have quorum. Braindump2go New Updated 70-342 Exam Dumps are Complete Microsoft 70-342 Course Coverage! 100% Real Questions and Correct Answers Guaranteed! Updated 70-342 Preparation Material with Questions and Answers PDF Instant Download:

Compared Before Buying Microsoft 70-342

Pass4sure	Braindump2go
	100% Pass OR Money Back
146 Q&As - Practice	155 Q&As - Real Questions
\$124.99	\$99.99
No Discount	Coupon Code: BDN2014

<http://www.braindump2go.com/70-342.html>