

## [2017-Sep.-VersionBraindump2go 200-601 Exam Dumps 88Q Free Share[71-81

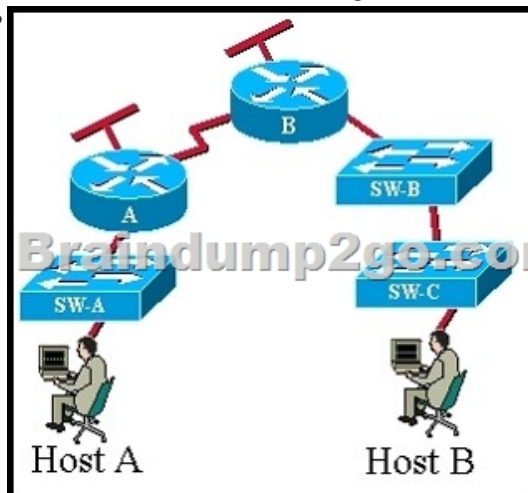
2017 Sep New 200-601 Exam Dumps with PDF and VCE Free Updated Today! Following are some New 200-601 Questions:

1. |2017 New 200-601 Exam Dumps (PDF & VCE) 88Q&As Download: <https://www.braindump2go.com/200-601.html> 2. |2017

New 200-601 Exam Questions & Answers Download:

<https://drive.google.com/drive/folders/0B75b5xYLjSSNWTIxdF9WZmZqMms?usp=sharing> QUESTION 71 Refer to the exhibit.

CCNA.com has the industrial network shown in the exhibit. All switches are configured as layer 2 switches and are using VLAN 1 as their management VLAN. Each VLAN 1 interface has been assigned the correct IP address. What is the purpose of assigning a default gateway to SW-C switch?



A. allows connectivity between the VLAN 1 interface on SW-C and other devices in the network.  
B. allows connectivity between Host A and other devices in the network.  
C. allows connectivity between Host B and other devices in the network.  
D. allows the switch to pass traffic between Host A and Host B  
Answer: A  
QUESTION 72 Refer to the exhibit. Host 3 on Network A is sending data to Host 8 on Network B. Which address is the default gateway of Host 3?



A. the address of the switch interface that is connected to router interface Fa0/0B.  
the address of the switch interface that is connected to router interface Fa0/1C.  
the address of the host that is connected to Network AD.  
the address of the host that is connected to Network BE.  
the address of the router interface Fa0/0F.  
the address of the router interface Fa0/1  
Answer: E  
QUESTION 73 What are the two most relevant factors in determining the class of administration that is required to maintain the telecommunications infrastructure? (Choose two.)  
A. the size of the infrastructure  
B. the complexity of the infrastructure  
C. the age of the infrastructure  
D. the industry that the infrastructure supports  
E. the physical environment of the infrastructure  
Answer: AB  
QUESTION 74 Which two ports does EtherNet/IP use to communicate? (Choose two.)  
A. TCP 44818B. UDP 44818C. TCP 502D. UDP 502E. TCP 2222F. UDP 2222  
Answer: AF  
QUESTION 75 Which of the following correctly pairs the dotted decimal subnet mask with the correct number of binary bits that represent the subnet mask?  
A. 255.255.255.192 and /25B. 255.255.255.248 and /28C. 255.255.255.224 and /26D. 255.255.255.248 and /27E. 255.255.255.240 and /28F. 255.255.255.240 and /16  
Answer: E  
QUESTION 76 Refer to the exhibit. What are three traffic and interconnection requirements for the devices in the exhibit? (Choose three.)  
A. The EtherNet/IP drive connections are in a high-voltage area and need protection from electromagnetic noise, so shielded cable that is rated for 600 V is advised.  
B. EtherNet/IP devices such as the controller, drive, VoIP phone, and IP camera should be in the same VLAN.  
C. CIP traffic has the highest bandwidth requirement so it needs the highest QoS setting.  
D. EtherNet/IP drive traffic has high sensitivity to random drops, latency, and jitter.  
E. Real-time motion control and VoIP traffic can share the same VLAN with the proper QoS setting.  
F. IEEE1588 and PTP are important for ensuring real-time synchronization.  
Answer: ADF  
QUESTION 77 You are called upon to troubleshoot connectivity problems to a network device on a production floor. You have used ping and traceroute to verify that you cannot connect to the device from the

management network. The network is 209.165.202.128/27 and the device has been given the IP address 209.165.202.158 and mask 255.255.255.224. You have verified that you can reach the device with your computer connected to the same switch as the device. What could be the cause of this problem? A. The device is set to the wrong subnet mask. B. The device is set to the wrong IP address. C. The device has no IP default gateway. D. The device is connected to a switchport in the wrong VLAN. Answer: C

QUESTION 78 Which prompt is used to configure parameters for the Ethernet ports of an industrial switch? A. Switch(config-if)# B. Switch(config-if-ind)# C. Switch(config-line)# D. Switch(config-ind)# E. Switch(config-vlan)# Answer: A

QUESTION 79 What are two benefits of a star network topology? (Choose two.) A. Disruption of the entire network is not required when adding new machines. B. Any problem which leaves the network inoperable can be traced to the central hub. C. This network type requires less cable as compared to linear bus topology. D. The performance of one of the numerous nodes cannot reflect on the performance of other nodes. E. The performance of the entire network is directly dependent on the performance of the hub. Answer: AB

QUESTION 80 What is the purpose of Spanning Tree Protocol? A. to prevent routing loops B. to create a default route C. to provide multiple gateways for hosts D. to maintain a loop-free Layer 2 network topology E. to enhance the functions of SNMP Answer: D

QUESTION 81 A small manufacturing company has a Class C network address on the plant floor and needs to create five subnets, each accommodating 25 endpoints. Which subnet mask needs to be configured? A. 255.255.240.0 B. 255.255.255.128 C. 255.255.255.192 D. 255.255.255.224 E. 255.255.255.240 F. 255.255.255.248 Answer: D

!!!RECOMMEND!!! 1. |2017 New 200-601 Exam Dumps (PDF & VCE) 88Q&As Download:

<https://www.braindump2go.com/200-601.html> 2. |2017 New 200-601 Exam Questions & Answers Download: YouTube Video:

[YouTube.com/watch?v=Qccgh1NYzVg](https://www.youtube.com/watch?v=Qccgh1NYzVg)