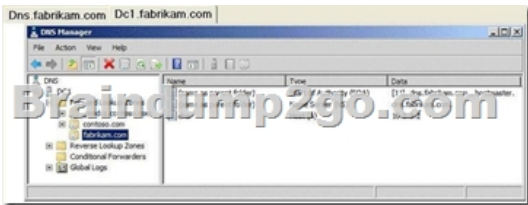


[2016- Mar. -NEW2016 Braindump2go Microsoft 70-642 Practice Exam Free Download

2016 March NEW Updated 70-642 Exam Questions Released Today! Exam Code: 70-642 Exam Name Windows Server 2008 Network Infrastructure, Configuring Certification Provider: Microsoft Corresponding Certifications: MCITP, MCITP Installation and Configuration Dynamics GP 10.0, MCITP: Enterprise Administrator, MCITP: Enterprise Administrator on Windows Server 2008, MCSA, MCSA: Windows Server 2008, MCSE, MCSE: Private Cloud Windows Server 2008, MCTS, MCTS: Windows Server 2008 Network Infrastructure, Configuration 2016 NEW 70-642 Study Guides: Configuring addressing and services Configuring names resolution Configuring network access Configuring file and print services Monitoring and managing a network infrastructure QUESTION 431 Your network contains an Active Directory domain named contoso.com. You have a DNS server named dns.fabrikam.com that hosts a DNS zone for fabrikam.com as shown in the Dns.fabrikam.com exhibit. (Click the Exhibit button.)



A domain controller named dcl.contoso.com hosts several DNS zones as shown in the Dcl.contoso.com exhibit. (Click the Exhibit button.)

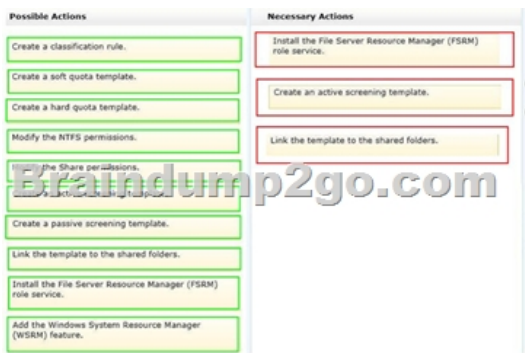


You discover that some of the records in the fabrikam.com zone fail to replicate to dcl.contoso.com. You need to ensure that all of the records in the fabrikam.com zone replicate to dcl.contoso.com. What should you do? A. On dcl.contoso.com, reload the fabrikam.com zone. B. On dns.fabrikam.com, modify the name servers of the fabrikam.com zone. C. On dns.fabrikam.com, modify the Zone Transfers settings of the fabrikam.com zone. D. On dcl.contoso.com, change the zone type of fabrikam.com.

Answer: D QUESTION 432 Drag and Drop Question Your network contains an Active Directory domain. The domain contains a server that runs Windows Server 2008 R2. The server contains 10 shared folders. You need to prevent users from saving .mp3 files to the shared folders. The users must be able to save all other file types to the shared folders. What should you do? To answer, move the appropriate actions from the Possible Actions list to the Necessary Actions area and arrange them in the correct order.



Answer:



QUESTION 433Your network contains an Active Directory domain named contoso.com. The domain contains two Active Directory sites named Site1 and Site2.You have a domain-based Distributed File System (DFS) namespace named \contoso.compublic that has a single namespace server located in Site1.You install another namespace server in Site2.You need to verify that the client computers in Site2 use the new namespace server. You want to achieve this goal by using the minimum amount of administrative effort.Which tool should you use? A. DfsrdiagB. Windows ExplorerC. Services for Network File System (NFS)D. Dfsutil Answer: A

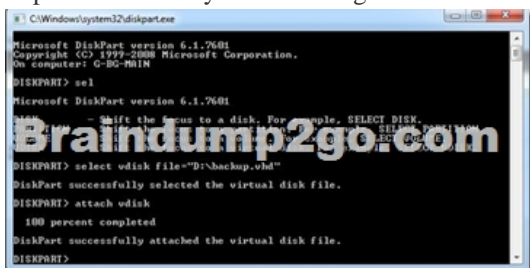
QUESTION 434Your network contains a server named Server1 that runs Windows Server 2008 R2. Server1 has the SNMP Service installed.You perform an SNMP query against Server1 and discover that the query returns the incorrect contact and location information.You need to change the contact and location information returned by Server1.What should you do? A. From the properties of the SNMP Trap Service, modify the General settings.B. From the properties of the SNMP Trap Service, modify the Logon settings.C. From the properties of the SNMP Service, modify the General settings.D. From the properties of the SNMP Service, modify the Agent settings. Answer: D

QUESTION 435Your network contains an Active Directory forest named contoso.com. The forest contains a server named Server1 that is configured as an enterprise certification authority (CA). The forest contains a server named Server2 that has the Network Policy Server (NPS) role service installed.You deploy Network Access Protection (NAP).You discover that Server1 fails to issue health certificates.You need to ensure that health certificates can be issued.What should you do? A. Publish the Kerberos Authentication certificate template on Server1.B. From the Network Policy Server console, modify the Windows System Health Validators settings.C. From the Network Policy Server console, create a new health policy.D. Install an additional server, configure the new server as a standalone CA, and then configure the Health Registration Authority (HRA) to use the CA. Answer: A

Explanation:In order to issue NAP health certificates from an enterprise certification authority (CA), you must configure certificate templates. After you create a health certificate template, it must be published so that the NAP certification authority (CA) can issue certificates to NAP client computers.**Note:-** NPS is the Microsoft implementation of a Remote Authentication Dial-in User Service (RADIUS) server, and as such, performs connection authentication, authorization, and accounting for many types of network access, including wireless and virtual private network (VPN) connections. NPS also functions as a health evaluation server for Network Access Protection (NAP).**Reference:** Create Health Certificate Templates

QUESTION 436You need to mount a VHD file that was created by using Windows Server Backup. Which tool should you use? A. MountB. imagexC. New-PSDriveD. Diskpart Answer: D

Explanation:DISKPART is now () being upgraded and posses the ability of interacting with VHDs. Here is how :Open CMD ? > type diskpart. Here is how it looks like to attach the vhd:



```
C:\Windows\system32\cmd.exe
Microsoft DiskPart version 6.1.7601
Copyright (C) 1999-2008 Microsoft Corporation.
On computer: G-35-7618

DISKPART> sel
Microsoft DiskPart version 6.1.7601

- Shift the focus to a disk. For example, SELECT DISK 0.

DISKPART> select vdisk file="D:\backup.vhd"
DiskPart successfully selected the virtual disk file.

DISKPART> attach vdisk
100 percent completed
DiskPart successfully attached the virtual disk file.

DISKPART>
```

Description: Using Diskpart to attach vhd to windows 7 **QUESTION 437**Your network contains a file server named Server1 that runs Windows Server 2008 R2 Service Pack (SP1).Server1 is configured to create a full server backup every weekday at 05:00.You discover that the backup job conflicts with an automated business process that completes at 05:05.You need to modify the backup job to begin at 05:15.Which tool should you use? (Each correct answer presents a complete solution. Choose two.) A. NtbackuprestoreB. Scheduled TasksC. WbadminD. the Windows Server Backup consoleE. At Answer: CE

Explanation: C: Wbadmin enable backupCreates and enables a daily backup schedule or modifies an existing backup schedule.With no parameters specified, it displays the currently scheduled backup settings.Example: wbadmin enable backup ?addtarget:\backupsharebackup1 ?include:d:documents ?user:CONTOSOEASTaekel ?password:\$3hM95lp ?schedule:00:00,19:00D: Windows Server Backup snap-in. This tool contains four wizards to help you perform backups and recoveries of your servers: Schedule Backup Wizard, Backup Once Wizard, Recovery Wizard, and Catalog Recovery Wizard. You can use the main page of the snapin to view information about any past or future backup or recovery operations. Also, you can use the tool to configure performance options for backups and recoveries.

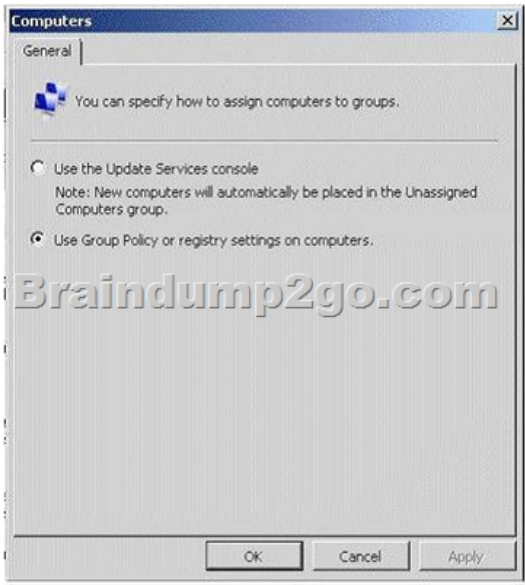
QUESTION 438Your network contains a domain controller named DC1 that runs Windows Server 2008 R2 Service Pack 1 (SP1).You need to create a script to clear the address table cache of the physical network interface.Which tool should you run in the script? A. route.exeB. netbtugc.exeC. netsh.exeD. dnscacheugc.exe Answer: CE

Explanation:To flush/Delete the ARP cache in windows 7/Vista/XP/2000/Server 2003/2008 follow this procedureClick on Start-->Run--> type the following

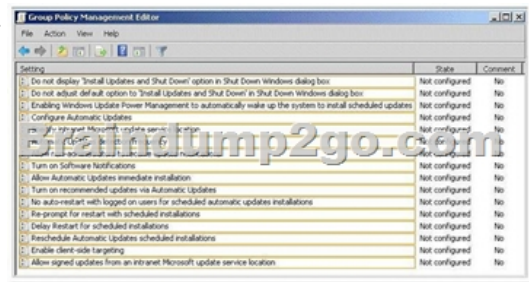
command click oknetsh interface ip delete arpccacheNote:- The Address Resolution Protocol (ARP) is very crucial for TCP/IP network communication. If you begin to notice network connectivity problems such as particular web pages not loading or not being able to ping certain IP addresses then clearing your ARP cache is a good place to start. The TCP/IP ARP Command component provides the functionality to add, delete, or display the IP address for Media Access Control (MAC) address translation. QUESTION 439You need to ensure that only the members of the Power Users group and the members of the Administrators group can view the events in the System log.Which tools should you use? A. Local Users and GroupsB. Limit-EventLogC. SeceditD. Local Group Policy Editor Answer: DExplanation:- The Local Group Policy Editor is a Microsoft Management Console (MMC) snap-in that provides a single user interface through which all the settings of Local Group Policy objects can be managed.- Security Policy Settings: Event Log:The Event Log service records events on the system by writing to one of three default logs that you can read in Event Viewer: the security, application, and system logs. The security log records audit events. You use the settings under Event Log to specify attributes of the security, application, and system logs, such as maximum log size, access rights for each log, and retention settings and methods.Incorrect:Not B: Limit-EventLog sets the event log properties that limit the size of the event log and the age of its entries.Not C: Configures and analyzes system security by comparing your current configuration to at least one template. QUESTION 440Your network contains a server named Server1. You plan to deploy the Windows Server update Services (WSUS) server role on Server1.You need to minimize the amount of disk space used to store updates on Server1.What should you do on Server1? A. Disable Quality of Service (QoS).B. Enable Quality of Service (QoS).C. Disable express installation files.D. Enable express installation files. Answer: C QUESTION 441Your network contains a DNS zone for contoso.com.All servers register their host names in DNS by using dynamic updates.The network contains a server named server1.contoso.com.From a computer named Computer1 that runs Windows 7, you successfully resolve server1.contoso.com to an IP address.You change the IP address of server1.contoso.com.From Computer1, you discover that server1.contoso.com still resolves to the old IP address.You successfully connect to server1.contoso.com by using the new IP address.You need to ensure that you can immediately resolve server1.contoso.com to the new IP address.What should you do on Computer1? A. Restart the Network Location Awareness service.B. Run dnscacheugc.exe.C. Restart the Computer Browser service.D. Restart the DNS Client service. Answer: D Explanation:Have you ever had an issue where you continually get DNS errors while trying to browse, but another computer on the same network is working just fine? The problem is most likely that you need to reload your DNS cache on that machine.You can tackle this problem two ways, first by just clearing the cache, but also by restarting the DNS client service, which handles caching of DNS lookups.Either:- Clear DNS Cacheipconfig /flushdnsor- net stop dnscachenet start dnscache



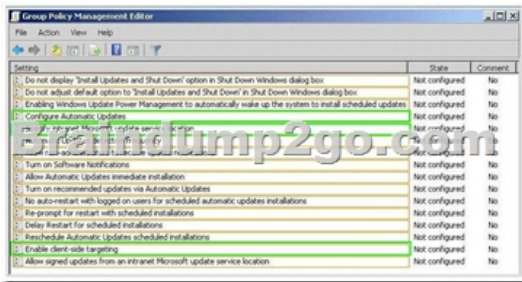
Description: <http://cdn.howtogeek.com/wp-content/uploads/2008/01/image27.png> QUESTION 442Your network contains an Active Directory domain named contoso.com. The domain contains two DNS servers named DC1 and Server1. DC1 is a domain controller. Server1 is member server.On DC1, you create an Active Directory-integrated zone named fabrikam.com.You need to create a copy of the fabrikam.com zone on Server1.What should you do? (Each correct answer presents part of the solution. Choose two.) A. Run the New Delegation Wizard on DC1.B. Create a new secondary zone on Server1.C. Modify the Zone Transfers settings of the fabrikam.com zone.D. Modify the Security settings of the fabrikam.com zone.E. Create a new stub zone on Server1.F. Run the New Delegation Wizard on Server1. Answer: AB QUESTION 443Your network contains a RADIUS server named Server1 and a VPN server named Server2.You deploy Network Policy and Access Services (NPAS) to a new server named Server3.You need to configure Server3 as a RADIUS proxy. The solution must ensure that Server3 accepts authentication requests from Server2 and forwards the requests to Server1.Which three actions should you perform on Server3? (Each correct answer presents part of the solution. Choose three.) A. Configure a connection request policy.B. Create a health policy.C. Create a remote RADIUS server group.D. Add a RADIUS client.E. Configure a network policy. Answer: ACD QUESTION 444Hotspot QuestionYour network contains a server named Server1 that runs Windows Server 2008 R2 Service Pack 1 (SP1) Enterprise. Server1 has theWindows Server Update Services (WSUS) server role installed.In WSUS, you create a computer group named All_Servers.The computer accounts for all member servers are in an organizational unit (OU) named Servers_OU.The Computers option in WSUS is configured as shown in the exhibit. (Click the Exhibit button.)



You create a Group Policy object (GPO). You link the GPO to Servers_OU. You need to ensure that all of the member servers receive the approved updates assigned to the the All_Servers computer group. Which three Group Policy options should you configure? To answer, select the appropriate options in the answer area.



Answer:



QUESTION 445Your network contains an Active Directory forest named contoso.com. The forest contains a server named Server1 that runs Windows Server 2008 R2 Service Pack 1 (SP1) Standard. The forest contains a server named Server2 that runs Windows Server 2008 R2 SP1 Enterprise. Server1 and Server2 have the Print and Document Services server role installed. You need to migrate the print queues, printer settings, printer ports, and language monitors from Server1 to Server2. Which tool should you use?
 A. Printmig
 B. Active Directory Sites and Services
 C. Printbrm
 D. Devices and Printers
Answer: C
Explanation: PrintBRM was introduced in Windows Vista and Windows Server 2008 as the replacement for the PrintMig utility. PrintBRM allows you to backup, restore and migrate print queues, printer settings, printer ports and language monitors.
QUESTION 446Your network contains the servers shown in the following table. Office1 and Office2 connect to each other by using a WAN link. Users in Office2 frequently access the same set of files stored in Data1. You need to reduce the amount of file transfer traffic across the WAN link. What should you add to Server1?

Server name	Server role	Server location	Server share
Server1	File server	Office1	Data1
Server2	File server	Office2	Data2

- A. the Indexing service
- B. the BranchCache for network files role service
- C. the Background Intelligent Transfer Service

(BITS) feature. The BranchCache feature. Answer: B QUESTION 447 Drag and Drop Question Your network contains an Active Directory forest named contoso.com. You need to create an Active Directory Rights Management Services (AD RMS) licensing-only cluster. What should you do? To answer, move the appropriate actions from the Possible Actions list to the Necessary Actions area and arrange them in the correct order.



Answer:



2016 NEW 70-642 Dumps PDF & 70-642 Questions and Answers 447q Full Version from Braindump2go:
<http://www.braindump2go.com/70-642.html>

Compared Before Buying Microsoft 70-642 PDF & VCE!		
Pass4sure	Braindump2go 100% Pass OR Money Back	Test King
Not In Stock	448 Q&As - Real Questions	50 Q&As - Practice
/	\$99.99	\$124.99
/	Coupon Code: BDNT2014	No Discount