

[2016 Mar.LatestBraindump2go 70-516 Latest Dumps Free Download Pass 70-516 Exam 100%

2016 March NEW 70-516 Exam Questions Released! Exam Code: 70-516 Exam Name: TS: Accessing Data with Microsoft .NET Framework 4 Certification Provider: Microsoft Corresponding Certifications: MCPD, MCPD: Web Developer 4, MCPD: Windows Developer 4, MCTS, MCTS: Microsoft .NET Framework 4, Data Access 2016 NEW 70-516 Study Guides: 1. Model data 2. Manage connections and context 3. Query data 4. Manipulate data 5. Develop and deploy reliable applications

QUESTION 271 You use Microsoft Visual Studio 2010 and Microsoft .NET framework 4 to create an application the application uses the ADO NET entity framework to model entities. You define a Category class by writing the following code segment (Line numbers are included for reference only)

```
Public Class Category01  
Public Class Category02  
Public Property CategoryID As Integer03  
Get04  
End Get05  
Set06  
End Set07  
End Property08  
Public Property CategoryName() As String09  
Get10  
End Get11  
Set12  
End Set13  
End Property14  
Public Property Description() As String15  
Get16  
End Get17  
Set18  
End Set19  
End Property20  
Public Property Picture() As Byte()21  
Get22  
End Get23  
Set24  
End Set25  
End Property
```

You need to add a collection named Products to the Category class. You also need to ensure that the collection supports deferred loading. Which code segment should you insert at line 25?

A. `Public Shared Property Products() As List(Of Product) Get End Get Set End Set End Property`

B. `Public Oweindabte Property Products() As bst(Of Product) Get End Get Set End Set End Property`

C. `Public UustOvemnde Property Products() As bst (Of Product)`

D. `Protected Property Products() As IJst(Of Product) Get End Get Set End Set End Property`

Answer: B

QUESTION 272 You use Microsoft Visual Studio 2010 and Microsoft .NET Framework 4 to create an application. You are creating the data layer of the application. You write the following code segment. (Line numbers are included for reference only.)

```
01 Public Shared Function GetDataReader(sql As String) As SqlDataReader02  
Dim dr As SqlDataReader = Nothing04  
Return dr05  
End Function
```

You need to ensure that the following requirements are met:

- The SqlDataReader returned by the GetDataReader method can be used to retrieve rows from the database.
- SQL connections opened within the GetDataReader method will close when the SqlDataReader is closed.

Which code segment should you insert at line 03?

A. `Using cnn As New SqlConnection(strCnn) Try Dim cmd As New SqlCommand(sql, cnn) cnn.Open() dr = cmd.ExecuteReader() Catch Throw End Try End Using`

B. `Dim cnn As New SqlConnection(strCnn) Dim cmd As New SqlCommand(sql, cnn) cnn.Open() Try dr = cmd.ExecuteReader() Finally cnn.Close() End Try`

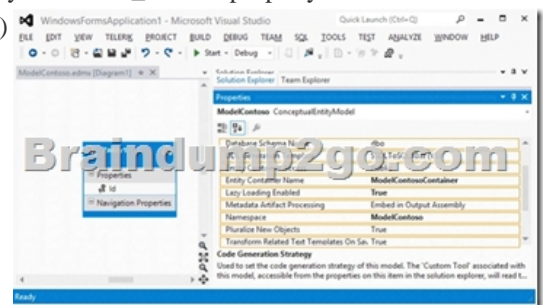
C. `Dim cnn As New SqlConnection(strCnn) Dim cmd As New SqlCommand(sql, cnn) cnn.Open() Try dr = cmd.ExecuteReader() Finally cnn.Close() Catch Throw End Try`

D. `Dim cnn As New SqlConnection(strCnn) Dim cmd As New SqlCommand(sql, cnn) cnn.Open() Try dr = cmd.ExecuteReader() CommandBehavior.CloseConnection() Catch cnn.Close() Throw End Try`

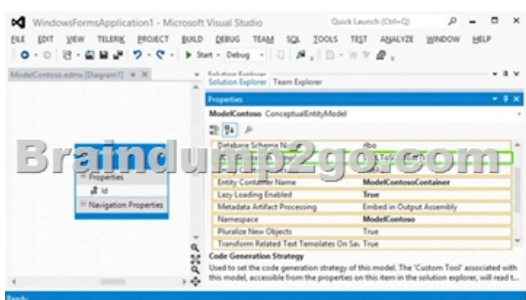
Answer: D

Explanation: CommandBehavior.CloseConnection When the command is executed, the associated Connection object is closed when the associated DataReader object is closed. CommandBehavior Enumeration (<http://msdn.microsoft.com/en-us/library/system.data.commandbehavior.aspx>) SqlCommand.ExecuteReader Method (CommandBehavior) (<http://msdn.microsoft.com/en-us/library/y6wy5a0f.aspx>)

QUESTION 273 Hotspot Question You create an Entity Data Model (EDM) named ModelContoso. You need to generate a Transact-SQL script to create a database to store ModelContoso. The solution must ensure that table names are prefixed automatically with TBL_. Which property of ModelContoso should you modify? (To answer, select the appropriate property in the answer area.)



Answer:



QUESTION 274 You use Microsoft Visual Studio 2010 and Microsoft .NET Framework 4 to create a Microsoft Windows Forms application. You plan to deploy the application to several shared client computers. You write the following code segment. (Line numbers are included for reference only.)

```
01 Dim config As Configuration = ConfigurationManager.OpenExeConfiguration(Configuration.UserPerMachine)
02 config.Save()
03 ... You need to encrypt the connection string stored in the .config file. Which code segment should you insert at line 02?
A. Dim section As ConnectionStringsSection = TryCast(config.GetSection("connectionString"), ConnectionStringsSection)
   section.SectionInformation.ProtectSection("DataProtectionConfigurationProvider")
B. Dim section As ConnectionStringsSection = TryCast(config.GetSection("connectionStrings"), ConnectionStringsSection)
   section.SectionInformation.ProtectSection("RsaProtectedConfigurationProvider")
C. Dim section As ConnectionStringsSection = TryCast(config.GetSection("connectionString"), ConnectionStringsSection)
   section.SectionInformation.ProtectSection("RsaProtectedConfigurationProvider")
D. Dim section As ConnectionStringsSection = TryCast(config.GetSection("connectionStrings"), ConnectionStringsSection)
   section.SectionInformation.ProtectSection("DataProtectionConfigurationProvider")
```

Answer: B
Explanation: You encrypt and decrypt the contents of a Web.config file by using System.Configuration.DPAPIProtectedConfigurationProvider, which uses the Windows Data Protection API (DPAPI) to encrypt and decrypt data, or System.Configuration.RSAProtectedConfigurationProvider, which uses the RSA encryption algorithm to encrypt and decrypt data. When you use the same encrypted configuration file on many computers in a Web farm, only System.Configuration.RSAProtectedConfigurationProvider enables you to export the encryption keys that encrypt the data and import them on another server. This is the default setting.

CHAPTER 2 ADO.NET Connected Classes Lesson 1: Connecting to the Data Store
Storing Encrypted Connection Strings in Web Applications (page 76)
Securing Connection Strings ([http://msdn.microsoft.com/en-us/library/89211k9b\(v=vs.80\).aspx](http://msdn.microsoft.com/en-us/library/89211k9b(v=vs.80).aspx))

QUESTION 275 Drag and Drop Question You have an application that queries a Microsoft Access database. The database contains a table named Table1. Table1 contains a column named Column1. A variable named Variable1 is used to store a user input string. You need to retrieve the rows from Table1 if the value in Column1 is equal to Variable1. The solution must protect against a SQL injection attack. What should you do? (Develop the solution by selecting and ordering the required code snippets. You may not need all of the code snippets.)

The screenshot shows a drag-and-drop question interface. On the left, there are several code snippets in yellow boxes. On the right, there is an empty 'Answer Area' box. A large watermark 'Braindump2go.com' is overlaid on the interface.

Code snippets (from top to bottom):

```
Dim command As OleDbCommand = New OleDbCommand("SELECT Column1, Column2 FROM Table1 WHERE Column1 = @Column1", connection)
Dim connection As OleDbConnection = New OleDbConnection(connectionString)
command.CommandType = CommandType.Text
connection.Open()

Dim sql = "SELECT Column1, Column2 FROM Table1 WHERE Column1 = ?"
Dim connection As OleDbConnection = New OleDbConnection(connectionString)
connection.Open()

Dim connection As OleDbConnection = New OleDbConnection(connectionString)
connection.Open()

Dim sql = "SELECT Column1, Column2 FROM Table1 WHERE Column1 = ?"
Dim connection As SqlConnection = New SqlConnection(connectionString)
connection.Open()

command.Parameters.AddWithValue("@Column1", Variable1)
Dim reader As SqlDataReader = command.ExecuteReader()

command.Parameters.AddWithValue("@Column1", Variable1)
connection.Open()
Dim reader As SqlDataReader = command.ExecuteReader()
```

Answer:

Code Segments	Answer Area
<pre>Dim command As OleDbCommand = New OleDbCommand(sql, connection) command.CommandType = CommandType.Text</pre>	<pre>Dim sql = "SELECT Column2, Column1 FROM Tab1 WHERE Column1 = @Column1" Dim connection As OleDbConnection = New OleDb Connection(connectionString)</pre>
<pre>Dim sql = "SELECT Column2, Column1 FROM Tab1 WHERE Column1 = @Column1" Dim connection As OleDbConnection = New OleDb Connection(connectionString)</pre>	<pre>Dim command As OleDbCommand = New OleDbCommand (sql, connection) command.CommandType = CommandType.Text</pre>
<pre>Dim sql = "SELECT Column2, Column1 FROM Tab1 WHERE Column1 = ?" Dim connection As OleDbConnection = New OleDb Connection(connectionString)</pre>	<pre>command.Parameters.AddWithValue ("@Column1", Variable1) Dim reader As IDataReader = command.ExecuteReader eader()</pre>
<pre>Dim sql = "SELECT Column2, Column1 FROM Tab1 WHERE Column1 = ?" Dim connection As OleDbConnection = New OleDb Connection(connectionString) connection.Open()</pre>	<pre>command.Parameters.AddWithValue ("@Column1", Variable1) Dim reader As IDataReader = command.ExecuteReader eader()</pre>
<pre>Dim sql = "SELECT Column2, Column1 FROM Tab1 WHERE Column1 = ?" Dim connection As OleDbConnection = New OleDb Connection(connectionString) connection.Open()</pre>	<pre>command.Parameters.AddWithValue ("@Column1", Variable1) Dim reader As IDataReader = command.ExecuteReader eader()</pre>

QUESTION 276 You use Microsoft .NET Framework 4 to develop an application that connects to a Microsoft SQL Server 2008 database. You add the following stored procedure to the database. CREATE PROCEDURE GetSalesPeople AS BEGIN SELECT FirstName, LastName, Suffix, Email, Phone FROM SalesPeople END You write the following code. (Line numbers are included for reference only.)

```
01 Dim connection As SqlConnection = New SqlConnection("& ")
02 Dim command As SqlCommand = New SqlCommand("GetSalesPeople", connection)
03 command.CommandType = CommandType.StoredProcedure
You need to retrieve all of the results from the stored procedure. Which code segment should you insert at line 04?
```

A. Dim res = command.ExecuteReader()
 B. Dim res = command.ExecuteScalar()
 C. Dim res = command.ExecuteNonQuery()
 D. Dim res = command.ExecuteXmlReader()

Answer: A Explanation: ExecuteReader Sends the CommandText to the Connection and builds a SqlDataReader. SqlCommand Class (<http://msdn.microsoft.com/en-us/library/system.data.sqlclient.sqlcommand.aspx>)

QUESTION 277 Drag and Drop Question You use Microsoft Visual Studio 2010 and Microsoft .NET Framework 4 to create an application. The application connects to a Microsoft SQL Server database. You have the following stored procedure:

```
CREATE PROCEDURE dbo.p_GetCustomers
@orderDate datetime
AS
FROM Customer
WHERE OrderDate = @OrderDate
```

You need to return a list of customers who match a given order date. The solution must meet the following requirements: Use a forward-only data object. Use a read-only data object. What should you do? (To answer, drag the appropriate code segments to the correct locations. Each code segment may be used once, more than once, or not at all. You may need to drag the split bar between panes or scroll to view content.)

Code Segments	Answer Area
<pre>while (rdr.Read()) da.Fill(new DataSet()); ForEach (dataset In dt.Rows) custName.Add(rd(0).ToString()); Dim dataTable As New DataTable() Dim rdr As SqlDataReader = sqlCmd.ExecuteReader()</pre>	<pre>Dim sqlConnectionString As String = "" Dim custName As New List(Of String) Using sqlConn As New SqlConnection(sqlConnectionString) sqlConn.Open() Using sqlCmd As New SqlCommand() sqlCmd.Connection = sqlConn sqlCmd.CommandType = CommandType.StoredProcedure sqlCmd.CommandText = "p_GetCustomers" sqlCmd.Parameters.AddWithValue (@orderDate, @orderDate) Code segment Code segment Code segment End While End Using Return custName End Function</pre>

Answer:

Code Segments	Answer Area
<pre>while (rdr.Read()) da.Fill(new DataSet()); ForEach (dataset In dt.Rows) custName.Add(rd(0).ToString()); Dim dataTable As New DataTable() Dim rdr As SqlDataReader = sqlCmd.ExecuteReader()</pre>	<pre>Dim sqlConnectionString As String = "" Dim custName As New List(Of String) Using sqlConn As New SqlConnection(sqlConnectionString) sqlConn.Open() Using sqlCmd As New SqlCommand() sqlCmd.Connection = sqlConn sqlCmd.CommandType = CommandType.StoredProcedure sqlCmd.CommandText = "p_GetCustomers" sqlCmd.Parameters.AddWithValue (@orderDate, @orderDate) Dim rdr As SqlDataReader = sqlCmd.ExecuteReader() while (rdr.Read()) custName.Add(rd(0).ToString()) End While End Using Return custName End Function</pre>

QUESTION 278 You use Microsoft Visual Studio 2010 and Microsoft .NET Framework 4 to create an application. The application contains the following XML document: < feed >< title > Products < /title >< entry >< title > Entry title 1 < /title >< author > Author1 < /title >< content >< properties >< description > some description < /description >< notes > some notes < /notes >< comments > some comments < /comments >< /properties >< /content >< /entry >...< /feed > You plan to add localization features to the application. You add the following code segment. (Line numbers are included for reference only.)

```
01 Public Function  
02 GetTextNodesForLocalization(doc As XDocument) As IEnumerable(Of XElement)  
03 Return From n In nodes _04 Where n.NodeType  
05 = XmlNodeType.Text _06 Select n _06 End Function
```

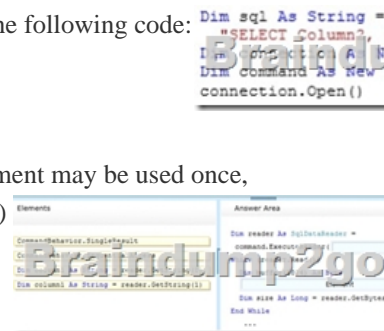
You need to ensure that the GetTextNodesForLocalization method returns all the XML text nodes of the document. Which code segment should you insert at line 02?

A. Dim nodes As IEnumerable(Of XElement) = doc.Descendants()
B. Dim nodes As IEnumerable(Of XElement) = doc.Nodes()
C. Dim nodes As IEnumerable(Of XElement) = doc.DescendantNodes()
D. Dim nodes As IEnumerable(Of XElement) = doc.NodesAfterSelf()

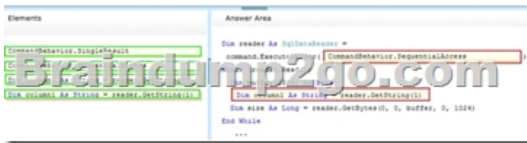
Answer: C
Explanation: DescendantNodes() Returns a collection of the descendant nodes for this document or element, in document order. Descendants() Returns a collection of the descendant elements for this document or element, in document order. Nodes() Returns a collection of the child nodes of this element or document, in document order. NodesAfterSelf() Returns a collection of the sibling nodes after this node, in document order.

QUESTION 279 Drag and Drop Question You have a Cable named Table1 that contains two columns named Column1 and Column2. Column1 contains string data. Column2 contains image files. You create the following code:

What code should you use? (To answer, drag the appropriate elements to the correct locations. Each element may be used once, more than once, or not at all. You may need to drag the split bar between panes or scroll to view content.)



Answer:



QUESTION 280 You use Microsoft Visual Studio 2010 and Microsoft .NET Framework 4 to develop an application. You use the ADO.NET Entity Framework Designer to model entities. You need to associate a previously deserialized entity named person1 to an object context named model and persist changes to the database. Which code segment should you use?

A. person1.AcceptChanges()
B. model.SaveChanges()
C. model.AttachTo("People", person1)
D. model.People.Attach(person1)
E. model.SaveChanges()
F. model.People.ApplyChanges(person1)
G. model.SaveChanges()

Answer: C
Explanation: Considerations from Attaching and Detaching objects (<http://msdn.microsoft.com/en-us/library/bb896271.aspx>): The object that is passed to the Attach method must have a valid EntityKey value. If the object does not have a valid EntityKey value, use the AttachTo method to specify the name of the entity set. Attach Use the Attach method of ObjectContext where the method accepts a single typed entity parameter. AttachTo The AttachTo method of ObjectContext accepts two parameters. The first parameter is a string containing the name of the entity set. The second parameter' type is object and references the entity you want to add. Attach The Attach method of ObjectSet, which is the entity set' type, accepts a single typed parameter containing the entity to be added to the ObjectSet. CHAPTER 6 ADO.NET Entity Framework Lesson 2: Querying and Updating with the Entity Framework Attaching Entities to an ObjectContext (page 437) Attaching and Detaching objects (<http://msdn.microsoft.com/en-us/library/bb896271.aspx>) [http://msdn.microsoft.com/en-us/library/bb896248\(v=vs.90\).aspx](http://msdn.microsoft.com/en-us/library/bb896248(v=vs.90).aspx) <http://msdn.microsoft.com/en-us/library/bb896248.aspx>

QUESTION 281 Drag and Drop Question You are developing a Windows Forms application. The application uses data from Microsoft SQL Server. You have the following code:



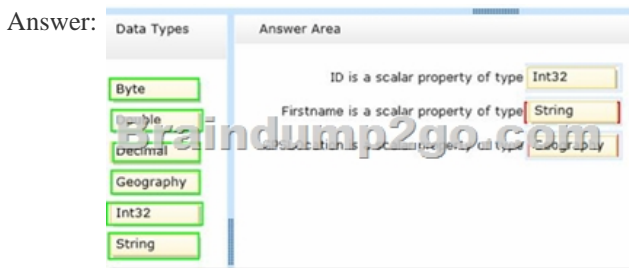
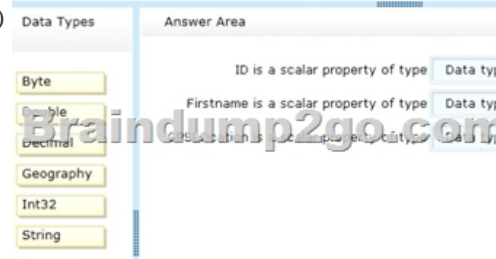
You need to identify the connection pools used by connections and connection? What should you identify? (To answer, drag the appropriate configurations to the correct connections pools. Each configuration may be used once, more than once, or not at all. You may need to drag the split bar between panes or scroll to view content.)



QUESTION 282 You use Microsoft Visual Studio 2010 and Microsoft .NET Framework 4 to create an application. The application connects to a Microsoft SQL Server database. The application uses Entity Framework to access data. You need to use Entity SQL to query data from an object of typeObjectContext. Which method should you use first? A. ExecuteStoreCommand B. ExecuteStoreQuery C. CreateObjectD. CreateQuery Answer: D QUESTION 283 Drag and Drop Question You plan to generate the following Transact-SQL script from an Entity Data Model (EDM) by using the Entity Framework Designer:

```
CREATE TABLE [dbo].[Employee]
([Id] [int] IDENTITY(1,1) PRIMARY KEY)
([FirstName] [nvarchar](50) NOT NULL)
([GPSLocation] [geography] NOT NULL)
CONSTRAINT [PK_Employees] PRIMARY
([Id] ASC) ON [PRIMARY]
```

You create an entity named Employee. You need to identify the data types for the properties of the Employee entity. What should you identify? (To answer, drag the appropriate data types to the correct statements. Each data type may be used once, more than once, or not at all. You may need to drag the split bar between panes or scroll to view content.)



QUESTION 284 You use Microsoft Visual Studio 2010 and Microsoft .NET Framework 4.0 to create a Windows Communication Foundation (WCF) Data Services service. You deploy the service by the following URL <http://contoso.com/Northwind.svc>. You want to query the WCF Data Services service to retrieve a list of customer objects. You need to ensure that the query meets the following requirements. "Only customers that match the following filter criteria are retrieved City=Seattle AND Level > 200 "Data sorted in ascending order by the ContactName and Address properties. Which URL should you use for the query"? A.

- <http://contoso.com/Northwind.svc/Customers?City=Seattle & Level gt 200 & Orderby=ContactName,Address> B.
- <http://contoso.com/Northwind.svc/Customers?City=Seattle & Level gt 200 & Orderby=ContactName,Address> C.
- <http://contoso.com/Northwind.svc/Customers?City eq `Seattle` and Level gt 200 & Orderby=ContactName,Address> D.
- <http://contoso.com/Northwind.svc/Customers?City eq `Seattle` and Level gt 200 & Orderby=ContactName,Address> Answer: C

QUESTION 285 Drag and Drop Question You are developing a Microsoft .NET Framework 4 application. The application connects to a Microsoft SQL Server database. You have the following stored procedure:

```
CREATE PROCEDURE pUpdateCustomer
    @CustomerId int,
    @Description nvarchar(200)
UPDATE Customer
SET Description = @Description
WHERE CustomerId = @CustomerId
```

You have a custom class named CustomerDataContext that is derived from the DataContext class. You need to use an instance of CustomerDataContext to update the database. What code should you use? (To answer, drag the appropriate code segments to the correct locations. Each code segment may be used once, more than once, or not at all. You may need to drag the split bar between panes or scroll to view content.)

Code Segments	Answer Area
Dim custId = 1	Dim ctx = New CustomerDataContext ()
Dim custId = "3"	Code segment
Dim query = ctx.pUpdateCustomer (New Description, custId)	Code segment
Dim query = ctx.pUpdateCustomer (ByRef custId, "New Description.")	
ctx.SubmitChanges ()	
ctx.ExecuteCommand ("New Description", New Customer ())	

Answer:

Code Segments	Answer Area
Dim custId = 1	Dim ctx = New CustomerDataContext ()
Dim custId = "3"	Dim custId = 1
Dim query = ctx.pUpdateCustomer (New Description, custId)	Dim query = ctx.pUpdateCustomer (custId, "New Description.")
Dim query = ctx.pUpdateCustomer (ByRef custId, "New Description.")	
ctx.SubmitChanges ()	
ctx.ExecuteCommand ("New Description", New Customer ())	

QUESTION 286 Drag and Drop Question You are developing a transactional application that debits customer accounts. The application tracks account data in a local Microsoft SQL Server database and a web service. You need to ensure that the transaction rolls back the operation in the local database and in the web service if an exception occurs. What should you do? (To answer, drag the appropriate elements to the correct locations. Each element may be used once, more than once, or not at all. You may need to drag the split bar between panes or scroll to view content.)

Elements	Answer Area
IsolationLevel	public void DebitCustomerAccount (decimal amount)
Timeout	{
TransactionOptions	var req = new TransactionOptions {
TransactionScope	var req = new TransactionOptions {
TransactionScopeOption	using (var tx = new TransactionScope (req))
TransactionScopeOption.Required	{
TransactionScopeOption.RequiredAndAllowForCascade	this.DebitLocalAccount (amount);
TransactionScopeOption.Suppress	this.DebitWebServiceAccount (amount);
TransactionScopeOption.SuppressAndAllowForCascade	tx.Complete ();
TransactionScopeOption.SuppressAndAllowForCascadeAndWarnAboutChanges	}
TransactionScopeOption.SuppressAndAllowForCascadeAndWarnAboutChangesAndAllowForNewCommittedWork	}

Answer:

Elements	Answer Area
IsolationLevel	public void DebitCustomerAccount (decimal amount)
Timeout	{
TransactionOptions	var req = new TransactionOptions {
TransactionScope	var req = new TransactionOptions {
TransactionScopeOption	using (var tx = new TransactionScope (req))
TransactionScopeOption.Required	{
TransactionScopeOption.RequiredAndAllowForCascade	this.DebitLocalAccount (amount);
TransactionScopeOption.Suppress	this.DebitWebServiceAccount (amount);
TransactionScopeOption.SuppressAndAllowForCascade	tx.Complete ();
TransactionScopeOption.SuppressAndAllowForCascadeAndWarnAboutChanges	}
TransactionScopeOption.SuppressAndAllowForCascadeAndWarnAboutChangesAndAllowForNewCommittedWork	}

Compared Before Buying Microsoft 70-516 PDF & VCE!		
Pass4sure	Braindump2go 100% Pass OR Money Back	Test King
Not In Stock	286 Q&As – Real Questions	50 Q&As - Practice
/	\$99.99	\$124.99
/	Coupon Code: BDNT2014	No Discount