

[2016 Mar. LatestBest 70-497 VCE Free Dowblod in Braindump2go

2016 March NEW 70-497 Exam Questions Updated Today! Exam Code: 70-497 Exam Name: Software Testing with Visual Studio 2012 Certification Provider: Microsoft Corresponding Certifications: MCSD, MCSD: Application Lifecycle Management 2016 NEW 70-497 Study Guides: 1.Create and configure test plans2.Manage test cases3.Manage test execution ATTENTION:2016 NEW ADDED 70-497 Practice Questions are the key to pass the 70-497 certification exam! Candidates for this exam are software testers. They manage the process of running tests, creating and monitoring bugs, and managing and mitigating issues that a software organization has in controlling test coverage for project requirements. The qualified candidate typically has a strong understanding of the software testing role and modern testing practices, and the ability to implement testing practices by using Microsoft technologies. QUESTION 91 Your organization uses Microsoft Visual Studio Team Foundation Server (TFS) 2013. You are working with tests in the TFS Web Access. You have an existing test that uses the following parameters: @city, @state, and @postal code. You want to use the same parameters in a new test case. Which two actions should you perform? Each correct answer presents part of the solution. A. In the original test case, select convert to shared parameters. B. Open the original test case, and copy the parameters. C. Open the new test case, and paste the parameters. D. In the new test case, select add a shared parameter set. Answer: A D Explanation: Share parameters between test cases Convert existing parameters to shared parameters, so that you can use them and the associated data in other test cases. After you have created a shared parameter set, open another test case and add the shared parameter set to that test case. You can search for the shared parameter set by name. Reference: Repeat a test with different data QUESTION 92 Drag and Drop Question Your team uses the Microsoft Visual Studio Scrum process template for a project. Your team uses the Area to filter by Function, with subcategories pertinent to those functions. Your stakeholders want to be able to view requirements and quality reports by specific department. You need to modify the Test Case Readiness report to add a filter so that the report can be filtered appropriately. Which five actions should you perform in sequence? To answer, move the appropriate actions from the list of actions to the answer area and arrange them in the correct order.

Actions	Answer Area
Modify the Test Case Readiness report by using Report Builder.	
Add the field from dsDepartment as a report filter to the Test Case Readiness report.	
Repurpose the existing Business Value column to be the Department Requested column.	
Add a new dataset named dsDepartment to the report that contains the custom field.	
Add the field dsDepartment to the body of the report.	
Modify WIT for Product Backlog Item to add a Department Requested field.	

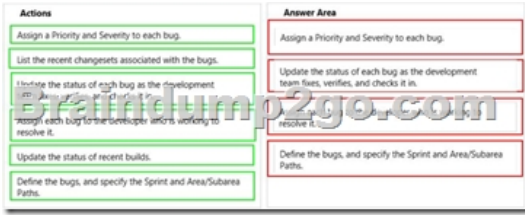
Answer:

Actions	Answer Area
Modify the Test Case Readiness report by using Report Builder.	Modify the Test Case Readiness report by using Report Builder.
Add the field from dsDepartment as a report filter to the Test Case Readiness report.	Add the field from dsDepartment as a report filter to the Test Case Readiness report.
Repurpose the existing Business Value column to be the Department Requested column.	Repurpose the existing Business Value column to be the Department Requested column.
Add a new dataset named dsDepartment to the report that contains the custom field.	Add a list of departments to the Allowed Values for the field.
Add the field dsDepartment to the body of the report.	Add a new dataset named dsDepartment to the report that contains the custom field.
Modify WIT for Product Backlog Item to add a Department Requested field.	

QUESTION 93 Drag and Drop Question Your company's test team is working through their bug backlog and tracking their progress on the Bugs dashboard. The bug backlog continues to grow, but the reports that appear on the Bugs dashboard are neither accurate nor useful. You need to establish a best practice that will ensure the reports on the Bugs dashboard are accurate and useful. Which four actions should you perform in sequence? To answer, move the appropriate actions from the list of actions to the answer area and arrange them in the correct order. More than one order of answer choices may be correct. You will receive credit for any of the correct orders you select.

Actions	Answer Area
Assign a Priority and Severity to each bug.	
List the recent changesets associated with the bugs.	
Update the status of each bug as the development team works on it.	
Update the status of recent builds.	
Define the bugs, and specify the Sprint and Area/Subarea Paths.	

Answer:

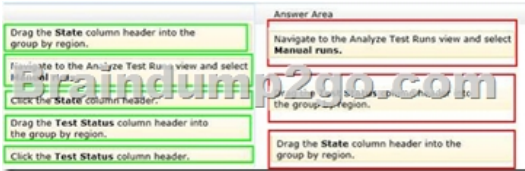


QUESTION 94 You are using Microsoft Test Manager (MTM). You are using the Microsoft Solution Framework (MSF) for Agile Software Development process template. SharePoint integration and reporting are enabled. You want to assess the progress of your team's testing effort. To do this, you need to: - Identify gaps in test coverage. - Monitor test progress for each requirement, and. - Identify how many test cases are passing or failing for each requirement. What should you do? A. Open the test plan in MTM and look at the test plan status. B. From Team Explorer, open the Stories Progress report. C. From the team portal, open the Test Plan Progress Excel Report. D. From the team portal, open the User Story Test Status Excel Report. Answer: D Explanation: You can use the User Story Test Status report to help determine gaps in test coverage and monitor test progress for each user story. This report indicates how many test cases are passing or failing for each user story. This report is available only when the team creates test plans and starts to run tests by using Microsoft Test Manager. Reference: User Story Test Status Excel Report (Agile)

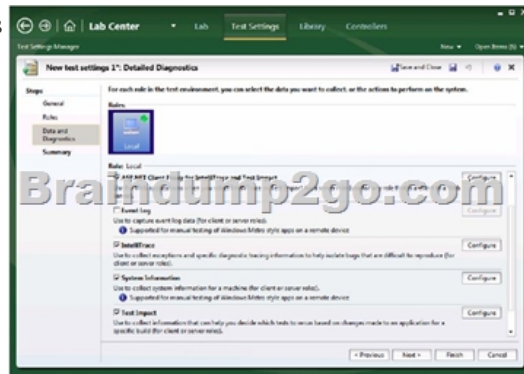
QUESTION 95 Drag and Drop Question You are using Microsoft Test Manager (MTM) to manage your testing efforts. You want to see how manual testing is going for the current plan. You need to see a list of manual test runs grouped first by Test Status and then by State. What should you do? (To answer, move the three appropriate actions from the list of actions to the answer area and arrange them in the correct order.)



Answer:

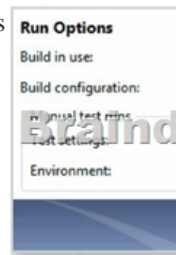


QUESTION 96 You are using Microsoft Test Manager (MTM) to run a test case. During the previous run of the same test case, a bug was filed. The developer could not reproduce the bug. The test settings assigned to the test plan do not include an adapter to collect IntelliTrace data. You have created a test setting that includes the IntelliTrace data adapter. You need to re-run the test with the settings that have the IntelliTrace data adapter. What should you do? A. Select the test case. Select the Run with option. Select the test setting that collects IntelliTrace information. B. Select the test suite that contains the test case. Click Settings, then right-click IntelliTrace to enable it. C. Open the test case. Click Settings to select the settings that have the IntelliTrace data adapter. D. Run the test case with its default settings. Click View Results and locate the IntelliTrace file that was created when the test case was executed. Answer: A Explanation: - Creating a new Test Settings

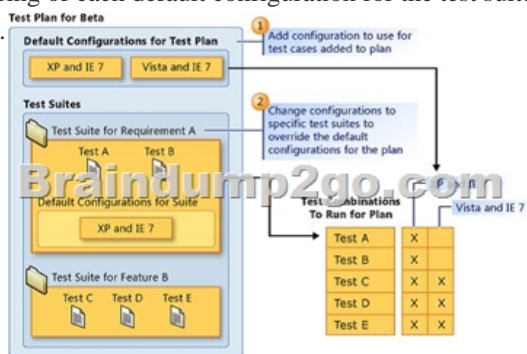


The built-in data adapters in MTM 2012 include: IntelliTrace: Used to collect run-time and exception information from the system

under test that can be used by developers to speed up the time it takes to understand the cause of a problem.- When we want to use the test settings we either assign it to the test plan or choose the test setting when we start a test run by selecting Run Options



QUESTION 97 You plan to conduct a manual test for an ASP.NET website by using Microsoft Test Manager (MTM). You create a test plan named Release 1.0 by using Testing Center in MTM. You need to configure the Release 1.0 test plan so that all the test cases in the test plan will run against the following platforms:- Microsoft Windows 7 and Windows Internet Explorer 8 - Microsoft Windows Server 2008 and Windows Internet Explorer 8 What should you do? A. Create new test environments with the specified configuration settings and associate the newly created environment to the test plan by changing the automated test environment settings. B. Create new test configurations with the specified configuration settings and associate the newly created configuration to the test plan by changing the configuration settings. C. Create new test environments with the specified configuration settings and associate the newly created environment to the test plan by changing the manual test environment settings. D. Create new test environments with the specified configuration settings and associate the newly created environment to the test plan by changing both the manual and automated test environment settings. Answer: B Explanation: At any time when you are planning what to test, you can add test configurations and set them as the default configurations for your test plan. When you next add test cases to the test plan, a pairing of each default configuration with the test case is added to the test plan. When you run the tests from the test plan, these pairings called test points are shown and each can be run individually. Test results are saved for each test point. You can also override the default test configurations for the plan and set different default configurations for a specific test suite. When test cases are added to these test suites, a pairing of each default configuration for the test suite with the test case is added to the test plan as shown in the following illustration.



Reference: How to: Select Different Test Configurations For a Test Plan or a Test Suite **QUESTION 98** You create a set of test cases for a complex requirement. The test cases should be listed in a specific order. You need to configure a test suite and define the order of the test cases. Which type of test suite should you configure? A. Query-based B. Static C. Requirements-based D. Order-based Answer: B Explanation: Static test suites are like folders. A static test suite can contain both test cases and other suites. Choose Order to arrange the order in which tests will be run in a static test suite. Reference: Organizing Test Cases Using Test Suites **QUESTION 99** You are using Microsoft Test Manager (MTM). Your testing team is creating test cases for an application. You need to assign the state of the test suite that contains test cases that are unavailable to run. Which state should you assign? A. In Planning B. Completed C. In Design D. In Progress Answer: A Explanation: Use In Planning if you are not yet ready to run the tests linked to this requirement. Reference: How to: Add Requirements or User Stories to Your Test Plan **QUESTION 100** You are using Microsoft Test Manager (MTM). Your company no longer supports a particular configuration for the application under test. You need to ensure that the test configuration is unavailable as an option in a test plan. Which state should you assign to the test configuration? A. Closed B. Inactive C. Disabled D. Idle Answer: B Explanation: When you have completed the tests in a test plan, set its state to Inactive. This prevents more tests from being run in this plan, but still allows the results of existing runs to be viewed. When the results are no longer required you can delete the test plan. **QUESTION 101** You are using Microsoft Test Manager (MTM) to create a test plan for testing an ASP.NET website. Your test plan needs to validate a set of critical business functionalities for the current

sprint. All business functionalities are documented in the requirements document published to the project portal. You need to associate your test plan with the requirements document. What should you do? A. Add a link to the requirements document in the Links section of the Properties view of the test plan. B. Click Copy Link in the Properties view of the test plan to link the requirements document on the project portal to the test plan. C. In the Area path drop-down list in the Properties view of the test plan, right-click the test plan area path node relevant to the requirements being tested. Select Add link to associate the requirements document link on the project portal with the area path node. D. Click Link next to the Description box in the Properties view of the test plan to link the requirements document on the project portal to the test plan. E. Click Link next to the Name box in the Properties view of the test plan to link the requirements document on the project portal to the test plan. Answer: A Explanation: We would typically add all requirements in the sprint to the test plan to associate the acceptance tests with the corresponding requirement. The figure below shows how we use a work item query matching the Requirement Category and Sprint 1 to find the requirements that we now can add to our plan. Adding requirements for Sprint 1 to our test plan

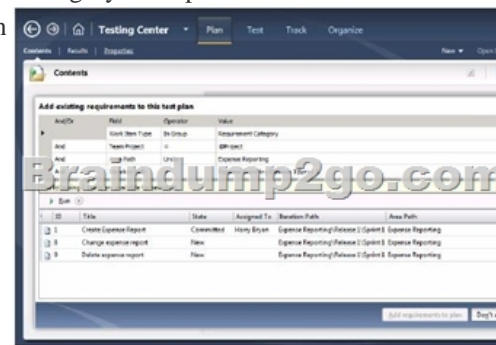
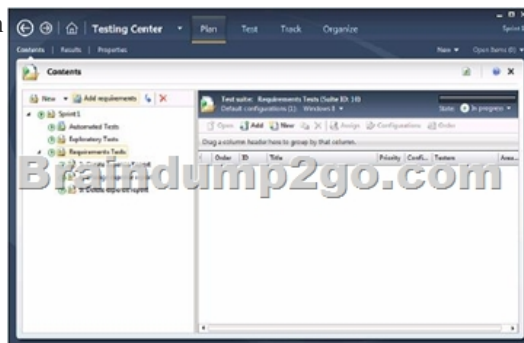


Figure 2, Complete structure for the Sprint 1 test plan



QUESTION 102 You conduct exploratory tests for a software project by using Visual Studio 2012. Which three statements regarding exploratory testing are correct? (Choose three.) A. You can collect exception and diagnostic tracing information from the client machines. B. You can collect system information about the client machines. C. You can create a video recording of the desktop. D. Exploratory testing can only be used with windows-based applications. E. You can automatically pass or fail tests based upon a recorded action script. Answer: ACD QUESTION 103 This question requires that you evaluate the underlined text to determine if it is correct. You use the Visual Studio 2012 Build-Deploy-Test workflow. You need to use a specific build to perform tests that are not part of the workflow. You must use the Deploy and Test scenario of the workflow. Select the correct answer if the underlined text does not make the statement correct. Select "No change is needed" if the underlined text makes the statement correct. A. No change is needed B. Build and Deploy C. Build Only D. Deploy Only Answer: D QUESTION 104 You are using Microsoft Visual Studio Unit Test Framework. What are the two minimum requirements for a test class? (Choose two.) A. One of the methods must have the TestCategory attribute. B. The class must have the TestInitialize attribute. C. The class must have the TestClass attribute. D. One of the methods must have the TestMethod attribute. Answer: CD Explanation: <http://msdn.microsoft.com/en-us/library/ms182532.aspx> QUESTION 105 This question requires that you evaluate the underlined text to determine if it is correct. Visual Studio saves test result data in a .txt file. Select the correct answer if the underlined text does not make the statement correct. Select "No change is needed" if the underlined text makes the statement correct. A. No change is needed B. .dat C. .tst D. .trx Answer: D QUESTION 106 Which three products must be installed to access Microsoft's built-in test reporting? (Choose three.) A. Microsoft Test Manager B. Team Foundation Server C. Visual Studio 2012 D. Windows 8 E. Internet Explorer Answer: ABC 2016 NEW 70-497 Dumps & 70-497 Practice Questions 106Q FREE Shared By Rraindump2go: <http://www.braindump2go.com/70-497.html>

Compared Before Buying Microsoft 70-497 PDF & VCE!		
Pass4sure	Braindump2go 100% Pass OR Money Back	Test King
Not In Stock	106 Q&As – Real Questions	50 Q&As - Practice
/	\$99.99	\$124.99
/	Coupon Code: BDN2014	No Discount