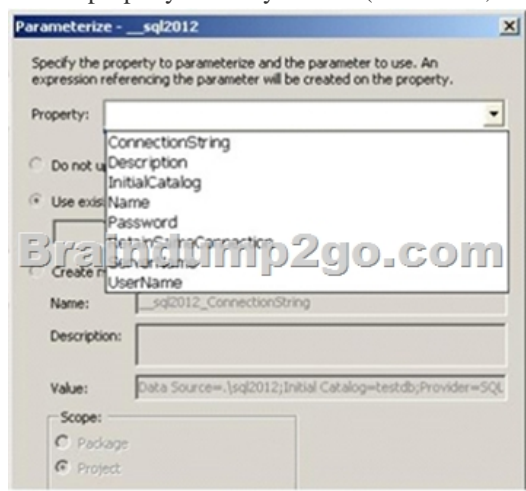
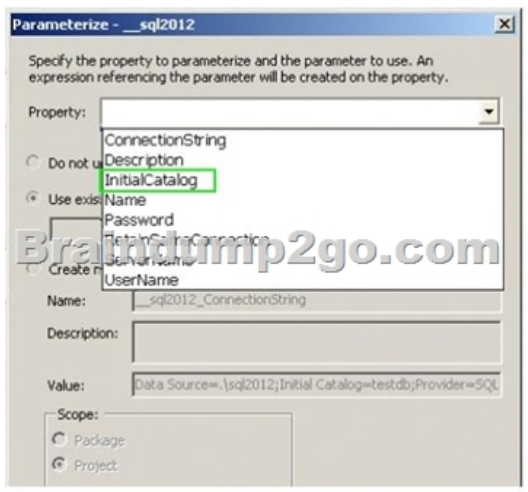


[2016 Feb-UPDATED] Free Braindump2go Microsoft 70-463 VCE Exam Questions and Answers Download

2016 February NEW ADDED 70-463 Exam Questions RELEASED Today! Exam Code: 70-463 Exam Name: Implementing a Data Warehouse with Microsoft SQL Server 2012 Certification Provider: Microsoft Corresponding Certifications: MCSA, MCSA: SQL Server 2012, MCSE, MCSE: Business Intelligence, MCSE: Data Platform 2016 NEW 70-463 Exam Topics: 1.Design and implement a data warehouse 2.Extract and transform data 3.Load data 4.Configure and deploy SSIS solutions 5.Build data quality solutions ATTENTION: 2016 NEW ADDED 70-463 Exam Questions are the most IMPORTANT! QUESTION 231 Which of the following statements about simple and complex data movements are true? (Choose all that apply.) A. Simple data movements only have a single data source and a single data destination. B. Complex data movements require data to be transformed before it can be stored at the destination. C. In simple data movements, data transformations are limited to data type conversion. D. In complex data movements, additional programmatic logic is required to merge source data with destination data. Answer: BD QUESTION 232 Which of the following statements are true? (Choose all that apply.) A. An SSIS package can contain one or more SSIS solutions, each performing a specific data management operation. B. An SSIS project can contain one or more SSIS packages. C. An SSIS project can contain exactly one SSIS package. D. SSIS packages contain programmatic logic used in data movements and data transformation operations. Answer: BD QUESTION 233 You are designing a data warehouse that uses SQL Server 2012. The data warehouse contains a table named factSales that stores product sales. The table has a clustered index on the primary key, four foreign keys to dimension tables, and an aggregate column for sales totals. All key columns use the INT data type, and the aggregate column uses the MONEY data type. You need to increase the speed of data retrieval from the factSales table. Which index type should you add to the table? A. Full text B. Spatial C. Non-clustered D. Clustered Answer: C QUESTION 234 You are developing a SQL Server Integration Services (SSIS) package to implement an incremental data load strategy. The package reads data from a source system that uses the SQL Server change data capture (CDC) feature. You have added a CDC Source component to the data flow to read changed data from the source system. You need to add a data flow transformation to redirect rows for separate processing of insert, update, and delete operations. Which data flow transformation should you use? A. Audit B. DQS Cleansing C. CDC Splitter D. Pivot Answer: C Explanation: The CDC splitter splits a single flow of change rows from a CDC source data flow into different data flows for Insert, Update and Delete operations <http://msdn.microsoft.com/en-us/library/hh758656.aspx> QUESTION 235 You are developing a SQL Server Integration Services (SSIS) package. You need to design a package to change a variable value during package execution by using the least amount of development effort. What should you use? A. Express on task B. Data Cleansing transformation C. Fuzzy Lookup transformation D. Term Lookup transformation E. Data Profiling task Answer: A QUESTION 236 You are designing a SQL Server Integration Services (SSIS) project that uses the Project Deployment Model. The project will contain 10 packages. All the packages must connect to the same data source and destination. You need to define and reuse the connection managers in all the packages by using the least development effort. What should you do? A. Implement parent package variables. B. Copy and paste connection managers from one package to the others. C. Implement project connection managers. D. Implement package connection managers. Answer: C QUESTION 237 Hotspot Question You are developing a SQL Server Integration Services (SSIS) package to load data into a SQL Server 2012 database. The package is allowed to connect to only one database. An Environment variable contains the name of the database. The OLE DB project connection manager has been parameterized. You need to configure the connection manager property to accept the value of the Environment variable. Which property should you use? (To answer, configure the appropriate option or options in the dialog box in the answer area.)



Answer:



QUESTION 238 You are designing a SQL Server Integration Services (SSIS) data flow to load sales transactions from a source system into a data warehouse hosted on Windows Azure SQL Database. One of the columns in the data source is named ProductCode. Some of the data to be loaded will reference products that need special processing logic in the data flow. You need to enable separate processing streams for a subset of rows based on the source product code. Which Data Flow transformation should you use? A. Multicast B. Conditional Split C. Script Task D. Data Conversion
Answer: B
Explanation: We use Conditional Split to split the source data into separate processing streams. A Script Component (Script Component is the answer to another version of this question) could be used but this is not the same as a Script Task.
QUESTION 239 Your company uses a proprietary encryption algorithm to secure sensitive data. A custom cryptographic assembly was developed in Microsoft .NET and is used in several applications. A SQL Server Integration Services (SSIS) package is importing data into a Windows Azure SQL Database database. Some of the data must be encrypted with the proprietary encryption algorithm. You need to design the implementation strategy to meet the requirements while minimizing development and deployment effort and maximizing data flow performance. What should you do? A. Create a SQL Common Language Runtime (SQLCLR) function that uses the custom assembly to encrypt the data, deploy it in the Windows Azure SQL Database database, and use it when inserting data. B. Use an SSIS Script transformation that uses the custom assembly to encrypt the data when inserting it. C. Create a SQL Common Language Runtime (SQLCLR) stored procedure that uses the custom assembly to encrypt the data, deploy it in the Windows Azure SQL Database database, and use it when inserting data. D. Use an SSIS Script task that uses the custom assembly to encrypt the data when inserting it.
Answer: B
 2016 February NEW Added 70-463 Exam Questions 238Q Full Version Free Shared By Braindump2go Today! <http://www.braindump2go.com/70-463.html>

Compared Before Buying Microsoft 70-463 PDF & VCE!		
Pass4sure	Braindump2go	Test King
Not In Stock	100% Pass OR Money Back	
/	238 Q&As – Real Questions	50 Q&As - Practice
/	\$99.99	\$124.99
/	Coupon Code: BDNT2014	No Discount