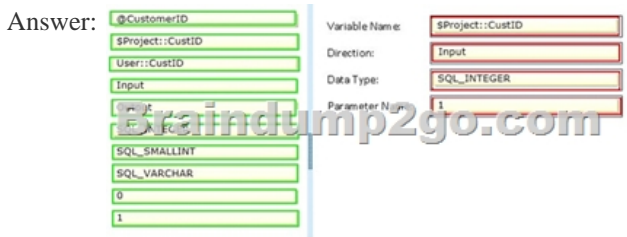
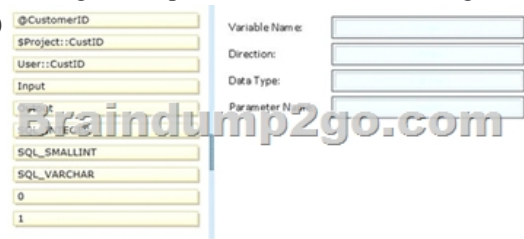


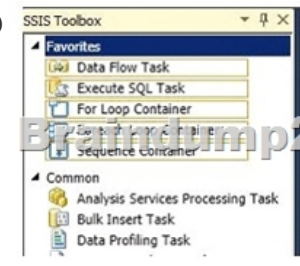
## [2016 Feb-NEW

2016 February NEW Updated 70-458 Exam Questions & 70-458 Dumps RELEASED Today! Exam Code: 70-458 Exam Name: Transition Your MCTS on SQL Server 2008 to MCSA: SQL Server 2012, Part 2 Certification Provider: Microsoft Corresponding Certifications: MCSA, MCSA: SQL Server 2012, MCSE, MCSE: Business Intelligence, MCSE: Data Platform Skills will be tested in the 2016 70-458 certification exam: 1. Manage data 2. Implement security 3. Implement high availability 4. Design and implement a data warehouse 5. Extract and transform data 6. Load data 7. Configure and deploy SSIS solutions 8. Build Data Quality solutions Who need to take this exam? **This exam is intended for candidates who have already earned any one of the MCTS certifications on SQL Server 2008, have completed Exam 457, and who wish to transition their skills to MCSA: SQL Server 2012.** QUESTION

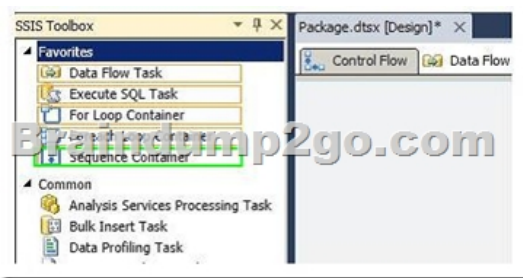
151 You are developing a SQL Server Integration Services (SSIS) package to implement an incremental data load strategy. The package reads data from a source system that uses the SQL Server change data capture (CDC) feature. You have added a CDC Source component to the data flow to read changed data from the source system. You need to add a data flow transformation to redirect rows for separate processing of insert, update, and delete operations. Which data flow transformation should you use? A. Pivot B. Merge C. Audit D. CDC Splitter Answer: B Explanation: MERGE with Incremental Loads The change data capture functionality that is new in SQL Server 2008 makes it easier to perform incremental loads reliably to a data warehouse. As an alternative to using parameterized OLE DB Command transformations to perform the inserts and the updates, you can use the MERGE statement to combine both operations. QUESTION 152 Drag and Drop Question You are developing a SQL Server Integration Services (SSIS) package that downloads data from a Windows Azure SQL Database database. A stored procedure will be called in an Execute SQL task by using an ODBC connection. This stored procedure has only the @customerID parameter of type INT. A project parameter named CustID will be mapped to the stored procedure parameter @CustomerID. You need to ensure that the value of the CustID parameter is passed to the @CustomerID stored procedure parameter. In the Parameter Mapping tab of the Execute SQL task editor, how should you configure the parameter? (To answer, drag the appropriate option or options to the correct location or locations in the answer area.)



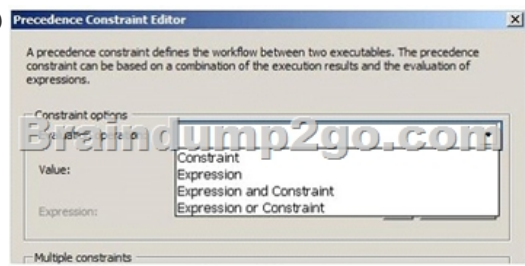
QUESTION 153 Hotspot Question You are developing a SQL Server Integration Services (SSIS) package. The package control flow will contain many tasks. The tasks will execute consecutively and none will execute more than once. Certain groups of tasks will share variable and transaction scope. You need to group tasks together while enabling them to be collapsed and expanded as a group. Which item should you use from the SSIS Toolbox? (To answer, select the appropriate item in the answer area.)



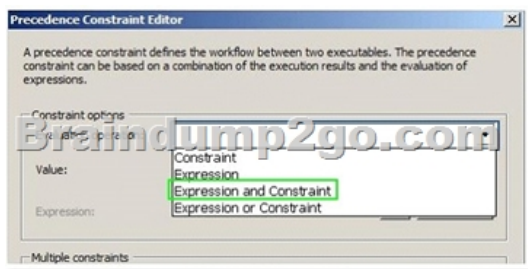
Answer:



**QUESTION 154** Hotspot Question You are developing a SQL Server Integration Services (SSIS) package. An Execute SQL task in the package checks product stock levels and sets a package variable named InStock to TRUE or FALSE depending on the stock level found. After the successful execution of the Execute SQL task, one of two data flow tasks must run, depending on the value of the InStock variable. You need to set the precedence constraints. Which value for the evaluation operation should you use? (To answer, select the appropriate option for the evaluation operation in the answer area.)



Answer:



**QUESTION 155** You administer a Windows Azure SQL Database database named Human\_Resources. The database contains 2 tables named Employees and SalaryDetails. You add two Windows groups as logins for the server:- CORPEmployees - All company employees- CORPHRAdmins - HR administrators only- HR Administrators are also company employees. You need to grant users access according to the following requirements:- CORPEmployees should have SELECT access to the Employees table.- Only users in CORPHRAdmins should have SELECT access to the SalaryDetails table.- Logins are based only on Windows security groups. What should you do? A. Create a database role called Employees. Add CORPEmployees to the db\_datareader role. Add all company employees except HR administrators to the Employees role. Deny SELECT access to the SalaryDetails table to the Employees role. B. Create a database role called HRAdmins. Add all company employees except HR administrators to the db\_datareader role, Add all HR administrators to the HRAdmins role. Grant SELECT access to the SalaryDetails table to the HRAdmins role. Deny SELECT access to the SalaryDetails table to the db\_datareader role. C. Create two database roles: Employees and HRAdmins. Add all company employees to the Employees role. Add HR administrators to the HRAdmins role. Grant SELECT access to all tables except SalaryDetails to the Employees role. Grant SELECT access to the SalaryDetails table to the HRAdmins role. Deny SELECT access to the SalaryDetails table to the Employees role. D. Create a database role called Employees. Add all HR administrators to the db\_datareader role. Add all company employees to the Employees role. Grant SELECT access to all tables except the SalaryDetails table to the Employees role. Deny SELECT access to the SalaryDetails table to the Employees role. Answer: D

**QUESTION 156** You are the senior database administrator for a Microsoft SQL Server environment that uses Windows Azure SQL Database. You need to grant a junior database administrator only the permissions required to create new logins. Which Windows Azure SQL Database role should you assign the junior database administrator? A. securityadmin B. loginmanager C. serveradmin D. setupadmin Answer: B

**QUESTION 157** You administer a Microsoft SQL Server 2012 server that hosts a transactional database and a reporting database. The transactional database is updated through a web application and is operational throughout the day. The reporting database is only updated from the transactional database. The recovery model and

backup schedule are configured as shown in the following table:

Database	Description
Transactional database	Recovery model: <ul style="list-style-type: none"> <li>• Full</li> </ul> Backup schedule: <ul style="list-style-type: none"> <li>• Full database backup: midnight, daily</li> <li>• Differential database backup: on the hour, every two hours starting at 02:00 hours except at 00:00 hours</li> <li>• Log backup: every half hour, except at the times of full and differential backups</li> </ul>
Reporting database	Recovery model: <ul style="list-style-type: none"> <li>• Full</li> </ul> Backup schedule: <ul style="list-style-type: none"> <li>• Full database backup: 01:00 hours daily</li> <li>• Differential database backup: 13:00 hours daily</li> </ul> Data updates: <ul style="list-style-type: none"> <li>• Changes in data are updated from the transactional database to the reporting database at 00:30 hours and at 12:30 hours</li> <li>• The update takes 15 minutes</li> </ul>

One of the hard disk drives that stores the transactional database fails at 23:32 hours. Attempts to create a tail log backup are unsuccessful. You need to ensure that the transactional database is restored. You also need to ensure that data loss is minimal. What should you do? A. Perform a page restore. B. Perform a partial restore. C. Perform a point-in-time restore. D. Restore the latest full backup. E. Restore the latest full backup. Then, restore the latest differential backup. F. Restore the latest full backup, and restore the latest differential backup. Then, restore the latest log backup. G. Restore the latest full backup, and restore the latest differential backup. Then, restore each log backup taken before the time of failure from the most recent differential backup. H. Restore the latest full backup. Then, restore each differential backup taken before the time of failure from the most recent full backup. Answer: G

QUESTION 158 You administer a SQL Server 2012 server that contains a database named SalesDb. SalesDb contains a schema named Customers that has a table named Regions. A user named userA is a member of a role named Sales. UserA is granted the Select permission on the Regions table and the Sales role is granted the Select permission on the Customers schema. You need to ensure that the Sales role, including userA, is disallowed to select from the Regions table. Which Transact-SQL statement should you use? A. DENY SELECT ON Object::Regions FROM Sales. B. DENY SELECT ON Schema::Customers FROM Sales. C. REVOKE SELECT ON Object::Regions FROM Sales. D. REVOKE SELECT ON Schema::Customers FROM Sales. E. DENY SELECT ON Object::Regions FROM UserA. F. DENY SELECT ON Schema::Customers FROM UserA. G. REVOKE SELECT ON Object::Regions FROM UserA. H. REVOKE SELECT ON Schema::Customers FROM UserA. I. EXEC sp\_addrolemember 'Sales', 'UserA'. J. EXEC sp\_droprolemember 'Sales', 'UserA'. Answer: A

QUESTION 159 You administer a Microsoft SQL Server 2012 server that hosts a transactional database and a reporting database. The transactional database is updated through a web application and is operational throughout the day. The reporting database is only updated from the transactional database. The recovery model and backup schedule are configured as shown in the following table:

Database	Description
Transactional database	Recovery model: <ul style="list-style-type: none"> <li>• Full</li> </ul> Backup schedule: <ul style="list-style-type: none"> <li>• Full database backup: midnight, daily</li> <li>• Differential database backup: on the hour, every two hours starting at 02:00 hours except at 00:00 hours</li> <li>• Log backup: every half hour, except at the times of full and differential backups</li> </ul>
Reporting database	Recovery model: <ul style="list-style-type: none"> <li>• Full</li> </ul> Backup schedule: <ul style="list-style-type: none"> <li>• Full database backup: 01:00 hours daily</li> <li>• Differential database backup: 13:00 hours daily</li> </ul> Data updates: <ul style="list-style-type: none"> <li>• Changes in data are updated from the transactional database to the reporting database at 00:30 hours and at 12:30 hours</li> <li>• The update takes 15 minutes</li> </ul>

The differential backup of the reporting database fails. Then, the reporting database fails at 14:00 hours. You need to ensure that the reporting database is restored. You also need to ensure that data loss is minimal. What should you do? A. Perform a page restore. B. Perform a partial restore. C. Perform a point-in-time restore. D. Restore the latest full backup. E. Restore the latest full backup. Then, restore the latest differential backup. F. Restore the latest full backup, and restore the latest differential backup. Then, restore the latest log backup. G. Restore the latest full backup, and restore the latest differential backup. Then, restore each log backup taken before the time of failure from the most recent differential backup. H. Restore the latest full backup. Then, restore each differential backup taken before the time of failure from the most recent full backup. Answer: D

2016 February NEW 70-458 PDF & 70-458 VCE 159Q Full Version Free Shared by Braindump2go: <http://www.braindump2go.com/70-458.html>

<b>Compared Before Buying Microsoft 70-458 PDF &amp; VCE!</b>		
<b>Pass4sure</b>	<b>Braindump2go</b> <b>100% Pass OR Money Back</b>	<b>Test King</b>
<b>Not In Stock</b>	<b>159 Q&amp;As – Real Questions</b>	<b>50 Q&amp;As - Practice</b>
/	<b>\$99.99</b>	<b>\$124.99</b>
/	<b>Coupon Code: BDNT2014</b>	<b>No Discount</b>