

2015 New Released Microsoft 70-410 Dumps Verison Free Use in Braindump2go (441-450)

MICROSOFT OFFICIAL: New Updated 70-410 Exam Questions from Braindump2go 70-410 pdf dumps and 70-410 vce dumps! Welcome to download the newest Braindump2go 70-410 vce&pdf dumps: <http://www.braindump2go.com/70-410.html> (471 Q&As) 2015 Latest released Microsoft Official 70-410 Practice Exam Question Free Download From Braindump2go Now! All New Updated 471 Questions And Answers are Real Questions from Microsoft Exam Center! Exam Code: 70-410Exam Name Installing and Configuring Windows Server 2012Certification Provider: MicrosoftCorresponding Certifications: MCSA, MCSA: Windows Server 2012, MCSE, MCSE: Desktop Infrastructure, MCSE: Private Cloud, MCSE: Server InfrastructureKeywords:70-410 Dumps,70-410 Exam Questions,70-410 VCE,70-410 VCE Free,70-410 PDF,70-410 Lab Manual PDF,70-410 Practice Exams,70-410 Practice Tests,70-410 Installing and Configuring Windows Server 2012

Installing and Configuring Windows Server 2012 R2 410



Product Description
Exam Number/Code: 70-410
"Installing and Configuring Windows Server 2012 R2 Exam" has assembled to help you with exam resources, you can use them for your successful exam preparation.

Questions and Answers : 471 Q&As
Updated: Sep 03, 2015
~~\$420.00~~ **\$99.99**

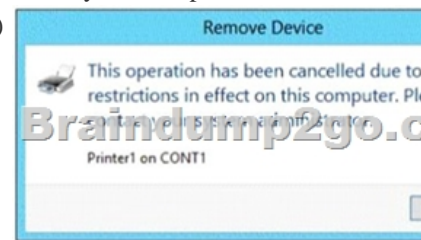
[PDF DEMO](#)

[CHECK OUT](#)

Free Demo Download
Braindump2go offers a free demo of the 2012 R2 Exam). You can use the demo exams before you purchase the full exam.

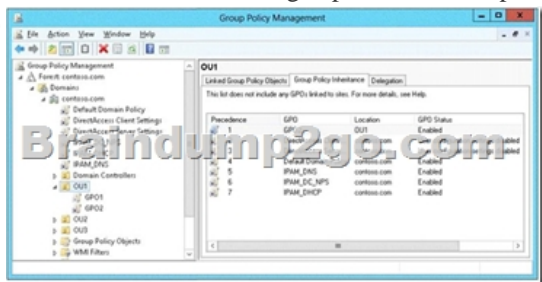
Printable PDF

QUESTION 441 You have a server named Server1 that runs Windows Server 2012 R2. Server1 has the Hyper-V server role installed. On Server1, you create a virtual machine named VM1. You need to ensure that VM1 can start by using PXE. What should you do? A. Add a second network adapter, and then run the Set-VMNetworkAdaptercmdlet. B. Add a second network adapter, and then configure network adapter teaming. C. Remove the network adapter, and then run the Set-VMNetworkAdaptercmdlet. D. Remove the network adapter, and then add a legacy network adapter. Answer: D **QUESTION 442** Your network contains an Active Directory domain named contoso.com. The domain contains two servers named CONT1 and CONT2. Both servers run Windows Server 2012 R2. CONT1 has a shared printer named Printer1. CONT2 connects to Printer1 on CONT1. When you attempt to remove Printer1 from CONT2, you receive the error message shown in the exhibit. (Click the Exhibit button.)

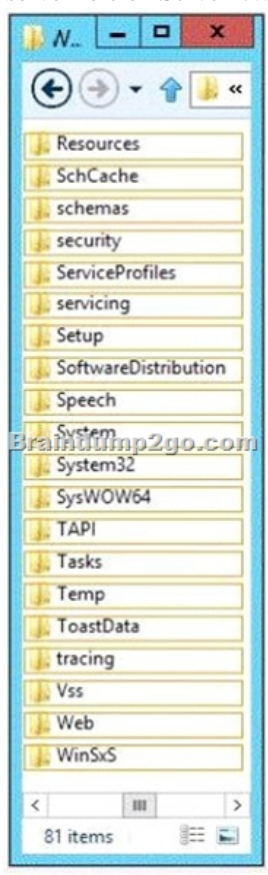


You successfully delete the other printers installed on CONT2. You need to identify what prevents you from deleting Printer1 on CONT2. What should you identify? A. Printer1 is deployed as part of a mandatory profile. B. Printer1 is deployed by using a Group Policy object (GPO). C. Your user account is not a member of the Print Operators group on CONT2. D. Your user account is not a member of the Print Operators group on CONT1. Answer: B **QUESTION 443** Your network contains an Active Directory domain named contoso.com. The domain contains a server named Server1. Server1 runs Windows Server 2012 R2 and has the Hyper-V server role installed. You have a virtual machine named VM1. VM1 has a checkpoint. You need to modify the Checkpoint File Location of VM1. What should you do first? A. Copy the checkpoint file. B. Delete the checkpoint. C. Shut down VM1. D. Pause VM1. Answer: B **QUESTION 444** Your network contains an Active Directory domain named contoso.com. All user accounts in the marketing department reside in an organizational unit (OU) named OU1. You have a Group Policy object (GPO) named GPO1. GPO1 contains Folder Redirection settings. GPO1 has default permissions. You discover that the Folder Redirection settings

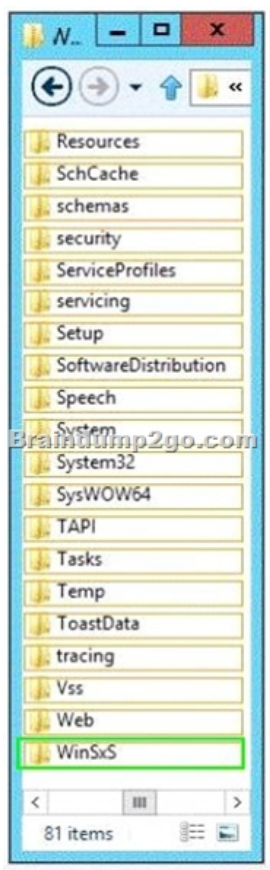
are not applied to the users in the marketing department. You open Group Policy Management as shown in the exhibit. (Click the Exhibit button.)



You need to ensure that the Folder Redirection settings in GPO1 apply to the marketing users. What should you do? A. Modify the Delegation settings of GPO1. B. Enable the link of GPO1. C. Enforce GPO1. D. Modify the link order of GPO1. Answer: C
QUESTION 445 Hotspot Question You have a server named Server1 that runs Windows Server 2012 R2. Server1 does not have Internet connectivity. All roles are removed completely from Server1. You mount a Windows Server 2012 R2 installation image to the C:\Source folder. You need to install the DNS Server server role on Server1. Which folder should you use as the source? To answer, select the appropriate folder in the answer area.



Answer:



QUESTION 446 Note: This question is part of a series of questions that use the same or similar answer choices. An answer choice may be correct for more than one question in the series. Each question is independent of the other questions in this series.

Information and details provided in a question apply only to that question. Your network contains one Active Directory domain named contoso.com. The domain contains 10 domain controllers and a read-only domain controller (RODC) named RODC01. You have a domain controller named DC5 that has the Server Graphical Shell disabled. You create an organizational unit (OU) named OU1. From DC5, you need to create 50 new user accounts in OU1. What tool should you use? A. the ntdsutil command. B. the Set-ADDomain cmdlet. C. the Install-ADDSDomain cmdlet. D. the dsadd command. E. the dsomain command. F. the dsmgmt command. G. the net user command. H. the Set ADForest cmdlet. Answer: D

QUESTION 447 Note: This question is part of a series of questions that use the same or similar answer choices. An answer choice may be correct for more than one question in the series. Each question is independent of the other questions in this series. Information and details provided in a question apply only to that question. Your network contains one Active Directory domain named contoso.com. The domain contains 10 domain controllers and a read-only domain controller (RODC) named RODC01. The domain contains an administrator account named Admin1. You need to prevent Admin1 from creating more than 100 objects in the domain partition. Which tool should you use? A. the ntdsutil command. B. the Set-ADDomain cmdlet. C. the Install-ADDSDomain cmdlet. D. the dsadd command. E. the dsomain command. F. the dsmgmt command. G. the net user command. H. the Set ADForest cmdlet. Answer: D

QUESTION 448 Note: This question is part of a series of questions that use the same or similar answer choices. An answer choice may be correct for more than one question in the series. Each question is independent of the other questions in this series. Information and details provided in a question apply only to that question. Your network contains one Active Directory domain named contoso.com. The domain contains 10 domain controllers and a read-only domain controller (RODC) named RODC01. You plan to replace a domain controller named DC1. DC1 has the schema operations master role. You need to transfer the schema master role to another domain controller named DC10 before you remove Active Directory from DC1. Which tool should you use? A. the ntdsutil command. B. the Set-ADDomain cmdlet. C. the Install-ADDSDomain cmdlet. D. the dsadd command. E. the dsomain command. F. the dsmgmt command. G. the net user command. H. the Set ADForest cmdlet. Answer: A

QUESTION 449 Note: This question is part of a series of questions that use the same or similar answer choices. An answer choice may be correct for more than one question in the series. Each question is independent of the other questions in this series. Information and details provided in a question apply

only to that question. Your network contains one Active Directory domain named contoso.com. The domain contains 10 domain controllers and a read-only domain controller (RODC) named RODC01. You need to ensure that when administrators create users in contoso.com, the default user principal name (UPN) suffix is litwareinc.com. Which cmdlet should you use? A. the ntdsutil command. B. the Set-ADDomain cmdlet. C. the Install-ADDSDomain cmdlet. D. the dsadd command. E. the dsain command. F. the dsmgmt command. G. the net user command. H. the Set ADForest cmdlet. Answer: D Explanation: dsadd and use the -upn switch QUESTION 450 Note: This question is part of a series of questions that use the same or similar answer choices. An answer choice may be correct for more than one question in the series. Each question is independent of the other questions in this series. Information and details provided in a question apply only to that question. Your network contains one Active Directory domain named contoso.com. The domain contains 10 domain controllers and a read-only domain controller (RODC) named RODC01. You need to add an RODC to the domain by using the Install From Media (IFM) option. Which tool should you use to create the media? A. the ntdsutil command. B. the Set-ADDomain cmdlet. C. the Install-ADDSDomain cmdlet. D. the dsadd command. E. the dsain command. F. the dsmgmt command. G. the net user command. H. the Set ADForest cmdlet. Answer: A For those who feel the overwhelming anxiety before their 70-410 exam, Braindump2go Latest updated 70-410 Exam Dumps will help you Pass 100% in a short time preparation! 70-410 Exam Dumps PDF & VCE Full Version Instant Download!

Installing and Config 410



Questions and Answers : 471
Q&As
Updated: Sep 03, 2015
~~\$420.00~~ **\$99.99**

[PDF DEMO](#)

[CHECK OUT](#)

70-410 PDF Dumps & 70-410 VCE Dumps Full Version Download(471q):]<http://www.braindump2go.com/70-410.html>