

2015 New Released Microsoft 70-341 Dumps Verison Free Use in Braindump2go (181-190)

Braindump2go New Released 70-341 Exam Dumps Questions New Updated Today: Latest 219 Questions and Answers Explanation. Guarantee you 100% Success when you attend Microsoft MCM 70-341 Exam! We update 70-341 Exam Dumps Questions every day and you can come to download our latest 70-341 Practice Tests daily! Vendor: MicrosoftExam Code: 70-341 Exam Name: Microsoft Core Solutions of Microsoft Exchange Server 2013Keywords: 70-341 Exam Dumps,70-341 PDF Download,70-341 VCE Download,70-341 Study Guide,70-341 Study Material,70-341 Braindump,70-341 Exam Questions,70-341 Book

Compared Before Buying Microsoft 70-341 PDF & VCE!

Pass4sure	Braindump2go 100% Pass OR Money Back	TestKing
205 Q&As – Practice	219 Q&As – Real Questions	50 Q&As – Practice
\$124.99	\$99.99	\$124.99
No Discount	Coupon Code: BDNT2014	No Discount

QUESTION 181 You deploy an Exchange Server 2013 organization to a test network for evaluation. You install the Mailbox server role and the Client Access server role on a server named ex01.contoso.com. You do not perform any other configurations. All of the ports from the Internet to ex01.contoso.com are open. You successfully connect to ex01.contoso.com from the Internet and from the internal network. You need to identify which types of Exchange Server clients will connect successfully to the organization without any further configurations. What should you identify? A. internal Outlook Web App connections B. Android Phones using Activesync C. Windows RT devices running the Mail app D. Windows Phones that use Exchange ActiveSync Answer: A Explanation: B Not BA All Android Phones require the AllowNonProvisionableDevices parameter set to \$True to sync successfully out of box with Exchange 2013 and this parameter is set to \$false by default C Not CA All Windows RT devices running the mail App require the AllowNonProvisionableDevices parameter set to \$True to sync successfully out of box with Exchange 2013 and this parameter is set to \$false by default D Not DA All Windows Phones require the AllowNonProvisionableDevices parameter set to \$True to sync successfully out of box with Exchange 2013 and this parameter is set to \$false by default The AllowNonProvisionableDevices parameter specifies whether all mobile phones can synchronize with the server running Exchange. When set to \$true, the AllowNonProvisionableDevices parameter enables all mobile phones to synchronize with the Exchange server, regardless of whether the phone can enforce all the specific settings established in the Exchange ActiveSync policy. This also includes mobile phones managed by a separate device management system. When set to \$false, this parameter blocks mobile phones that aren't provisioned from synchronizing with the Exchange server. The default value is \$false.

[http://technet.microsoft.com/en-gb/library/bb123756\(v=exchg.141\).aspx](http://technet.microsoft.com/en-gb/library/bb123756(v=exchg.141).aspx)

<http://exchangeserverpro.com/activesync-policies-cause-test-activesyncconnectivity-to-fail/>

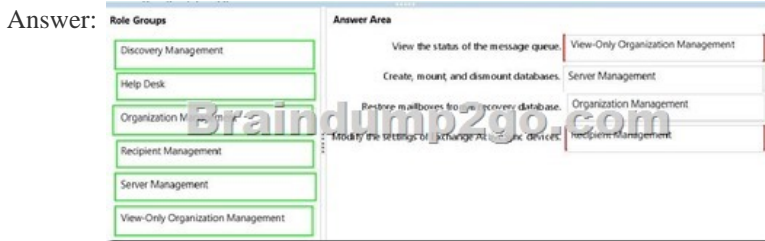
QUESTION 182 You have an Exchange Server 2013 organization. You create a public folder. You assign an email address to the public folder. You need to ensure that only a user named User1 can add content to the public folder by using email. Which cmdlet should you run? A. Set-MailPublicFolder B. Set-PublicFolder C. Set-Mailbox D. Add-PublicFolder C MENT PERMISSION Answer: A Explanation: Set-MailPublicFolder This cmdlet is available in on-premises Exchange Server 2013 and in the cloud-based service. Use the Set-MailPublicFolder cmdlet to configure the mail-related settings of mail-enabled public folders. If you want to configure basic settings that aren't mail related, use the Set-PublicFolder cmdlet. EXAMPLE 1 Set-MailPublicFolder -Identity MyPublicFolder@contoso.com -AcceptMessagesOnlyFrom "User1" EXAMPLE 2 This example sets the primary SMTP address of the mail-enabled public folder MyPublicFolder@contoso.com to MyPublicFolder@fabrikam.com. Set-MailPublicFolder -Identity MyPublicFolder@contoso.com -PrimarySmtpAddress MyPublicFolder@fabrikam.com [http://technet.microsoft.com/en-us/library/aa997560\(v=exchg.150\).aspx](http://technet.microsoft.com/en-us/library/aa997560(v=exchg.150).aspx)

[http://technet.microsoft.com/en-us/library/bb123707\(v=exchg.150\).aspx](http://technet.microsoft.com/en-us/library/bb123707(v=exchg.150).aspx)

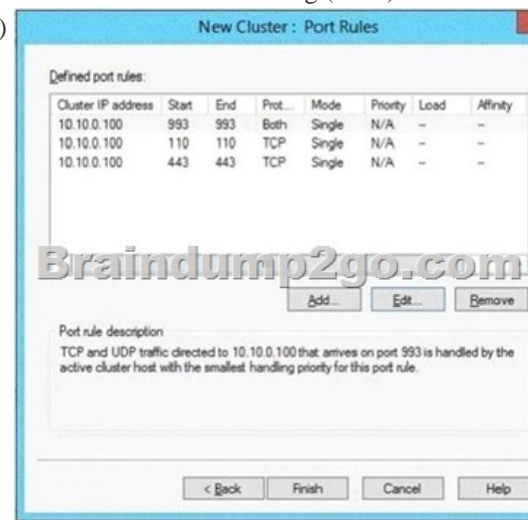
[http://technet.microsoft.com/en-gb/library/bb397214\(v=exchg.150\).aspx](http://technet.microsoft.com/en-gb/library/bb397214(v=exchg.150).aspx)

QUESTION 183 You have an Exchange Server 2013 organization that contains 20 servers. You plan to deploy Exchange Server 2013 RTM Cumulative Update 1 (CU1) to the first Exchange server in the organization. You need to ensure that a user named ExchangeAdmin can deploy CU1 to the first server. The solution must minimize the number of permissions assigned to ExchangeAdmin. To which groups should you add ExchangeAdmin? A. Schema Admins, Domain Admins, and Enterprise Admins B. Schema Admins, Domain Admins, and Delegated Setup C. Domain Admins and Organization Management D. Enterprise Admins and Organization Management Answer: A Explanation:

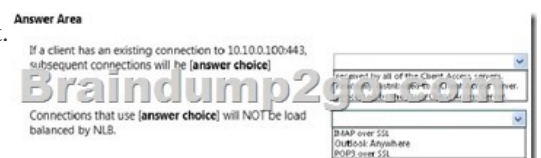
<http://technet.microsoft.com/en-us/exdeploy2013/Checklist?state=2419-W-CABEAaAAQAAAAUEAAQAAAAg~A>: Both Schema Admins and Enterprise Admins membership is needed to update the schema and prepare AD. NOT B: Delegated Setup can be used to install the 2nd server, not the first. NOT C: Both Schema Admins and Enterprise Admins membership is needed to update the schema and prepare AD. The user account installing the server is added to the Organization Management group during installation. NOT D: Both Schema Admins and Enterprise Admins membership is needed to update the schema and prepare AD. The user account installing the server is added to the Organization Management group during installation. QUESTION 184 You have an Exchange Server 2013 organization. An Active Directory administrator is concerned about the permissions assigned to a group named Exchange Trusted Subsystem. Exchange Trusted Subsystem has a member named Exchange Windows Permissions. You need to show the Active Directory administrator all of the permissions assigned to Exchange Trusted Subsystem. What should you use? A. ADSI Edit. B. Active Directory Sites and Services. C. Dsget. D. Active Directory Users and Computers. Answer: A. Explanation: [http://technet.microsoft.com/en-us/library/cc773354\(v=WS.10\).aspx](http://technet.microsoft.com/en-us/library/cc773354(v=WS.10).aspx) QUESTION 185 Drag and Drop Question You have an Exchange Server 2013 organization. You plan to delegate the following administrative tasks: - View the status of the message queue. - Create, mount, and dismount databases. - Restore mailboxes from a recovery database. - Modify the settings of Exchange ActiveSync devices. You need to identify which role group must be used to delegate each administrative task. The solution must ensure that the role group that has the fewest administrative privileges is used. Which role groups should you identify? (To answer, drag the appropriate role groups to the correct tasks. Each role group may be used once, more than once, or not at all. You may need to drag the split bar between panes or scroll to view content.)



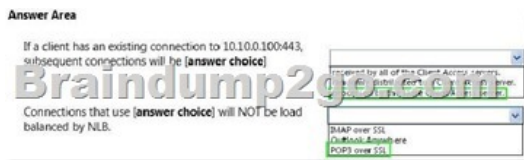
QUESTION 186 Hotspot Question Your network contains three Exchange Server 2013 servers that have the Client Access server role installed. Each server is configured as a POP3 server and an IMAP4 server. You deploy the Network Load Balancing (NLB) feature on the servers and configure NLB as shown in the exhibit (Click the Exhibit button.)



Use the drop-down menus to select the answer choice that completes each statement.



Answer:



QUESTION 187 Hotspot Question You have an Exchange Server 2013 organization that contains three moderated distribution groups named DG1, DG2, and DG3. DG3 is a member of DG2. You need to exclude from moderation the email messages sent from the members of DG3 to the members of DG1. The solution must maintain moderation for the email messages sent from all other users. What command should you run? (To answer, select the appropriate options in the answer area.)



Answer:



QUESTION 188 You have an Exchange Server organization. The organization contains a server named EX01 that has Exchange Server 2010 installed and a server named EX02 that has Exchange Server 2013 installed. Your mailbox is hosted on EX01. You need to access the Exchange Admin Center (EAC). Which URL should you use? A. <https://EX01/ecp?ExchClientVer=14B>. B. <https://EX02/ecp?ExchClientVer=15C>. C. <https://EX02/eac?ExchClientVer=15D>. D. <https://EX01/ecp?ExchClientVer=15> Answer: B

Explanation: <http://www.cgoosen.com/2013/07/how-to-access-exchange-admin-center-eac-in-exchange-2013-during-coexistence/>
<http://consulting.risualblogs.com/blog/2013/06/26/exchange-2013-coexistence-ecp-redirects-to-2010-ecp-2/>
<http://msexchange guru.com/2013/01/16/eac-exchange-2013/>
<http://blogs.technet.com/b/meamcs/archive/2013/05/04/exchange-2013-coexistence-ecp-your-mailbox-can-t-be-accessed-using-the-address-you-entered-please-obtain-the-correct-address.aspx>

QUESTION 189 You have an Exchange Server 2013 organization. The organization contains four servers in the same Active Directory site. The servers are configured as shown in the following table. EXB and EX4 are members of a database availability group (DAG) named DAG1. All users use Microsoft Outlook 2013 to connect to their mailbox. You need to recommend a client access solution to ensure that all of the users can connect to their mailbox if EX1 or EX2 fails. What should you recommend?

Server name	Role
EX1	Client Access server
EX2	Client Access server
EX3	Mailbox server
EX4	Mailbox server

A. Add a layer 4 hardware load balancer that balances RPC traffic. B. Add a layer 7 hardware load balancer that balances the traffic on port 443. C. Add a layer 7 hardware load balancer that balances RPC traffic. D. Replicate all of the databases in DAG1 to both DAG1 members. Answer: B Explanation: In Exchange 2013, RPC over TCP has been disabled. All Outlook communications are now through RPC over HTTP (Outlook Anywhere). This unifies the CAS protocol methods and provides a stable and reliable connectivity network between clients and server and between CAS and Mailbox Server. It also reduces the number of namespaces required. It also eliminates end user interruptions. Hence moving mailboxes around in DAG and moving mailboxes between mailbox databases are now easy. <http://blog.loadbalancer.org/load-balancing-exchange-2013/>
<http://windowsitpro.com/blog/exchange-2013-dumps-cas-arrays>

QUESTION 190 Your company has a main office and three branch offices. The main office is located in Austin. The branch offices are located in Denver, San Diego, and Chicago. The network contains an Active Directory forest. The forest contains a single domain. Each office is configured as an Active Directory site. The site in Austin contains four domain controllers that run Windows Server 2008 R2 and are configured as global catalog servers. The sites in Denver, San Diego, and Chicago each contain a read-only domain controller (RODC) that runs Windows Server 2008 R2. No other domain controllers exist on the network. You plan to deploy an Exchange Server 2013 organization. Exchange Server 2013 servers will be deployed in the Austin, Denver, and San Diego sites. Users from the Chicago site will access their mailbox remotely. You need to recommend changes to the Active Directory infrastructure to support the planned deployment of Exchange Server 2013. What should you recommend? A. Replace the RODCs in the Denver and San Diego sites with domain controllers that are

configured as global catalog servers.B. Configure the RODCs in the Denver and San Diego sites as read-only global catalog servers.C. Configure Active Directory automatic site coverage for the Chicago site.D. Upgrade all of the RODCs to Windows Server 2012. Answer: AExplanation:<http://technet.microsoft.com/en-us/library/aa996719.aspx>There must be a writable copy of the global catalog at each site where an Exchange 2013 server is to be installed. Braindump2go New Published Exam Dumps: Microsoft 70-341 Practice Tests Questions, 219 Latest Questions and Answers from Official Exam Centre Guarantee You a 100% Pass! Free Download Instantly!

Compared Before Buying Microsoft 70-341 PDF & VCE!		
Pass4sure	Braindump2go 100% Pass OR Money Back	TestKing
205 Q&As – Practice	219 Q&As – Real Questions	50 Q&As – Practice
\$124.99	\$99.99	\$124.99
No Discount	Coupon Code: BDNT2014	No Discount

<http://www.braindump2go.com/70-341.html>