


2015 Microsoft 70-411 Dumps Practice Tests Free Download in Braindump2go (291-300)

MICROSOFT OFFICIAL: New Updated 70-411 Exam Questions from Braindump2go 70-411 PDF Dumps and 70-411 VCE Dumps! Welcome to Download the Newest Braindump2go 70-411 VCE&PDF Dumps:
<http://www.braindump2go.com/70-411.html> (322 Q&As) Braindump2go New Released 70-411 Microsoft Exam Dumps Free Download Today! All 322q 70-411 Exam Questions are the new updated from Microsoft Official Exam Center. Braindump2go Offers 70-411 PDF Dumps and 70-411 VCE Dumps for free Download Now! 100% pass 70-411 Certification Exam! Exam Code: 70-411 Exam Name Administering Windows Server 2012 Certification Provider: Microsoft Corresponding Certifications: MCSA, MCSA: Windows Server 2012, MCSE, MCSE: Desktop Infrastructure, MCSE: Private Cloud, MCSE: Server Infrastructure
Keywords: 70-411 Dumps, 70-411 Microsoft Exam Questions, 70-411 VCE, 70-411 PDF, 70-411 Practice Exams, 70-411 Practice Tests, 70-411 Book, 70-411 Study Guide

Administering Windows Server 2012 R2 Exam: 70-411



Product Description Exam Number/Code: 70-411

Exam Number/Code: 70-411

"Administering Windows Server 2012 R2 Exam", also known as 70-411 exam, is a Microsoft Certification. With the complete collection of questions and answers, Braindump2go has assembled to take you through 322 Q&As to your 70-411 Exam preparation. In the 70-411 exam resources, you will cover every field and category in Microsoft MCSA helping to ready you for your successful Microsoft Certification.

Questions and Answers : 322
Q&As
Updated: Sep 14, 2015
~~\$429.99~~ **\$99.99**

[PDF DEMO](#)

[CHECK OUT](#)

Printable PDF Premium VCE + VCE Simulator

Braindump2go offers free demo for 70-411 exam (Administering Windows Server 2012 R2 Exam). You can check out the interface, question quality and usability of our practice exams before you decide to buy it.

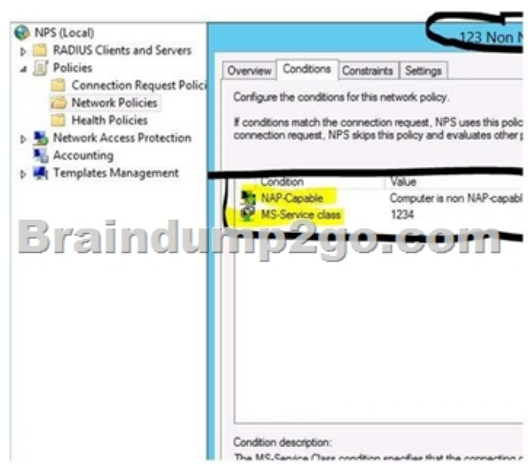
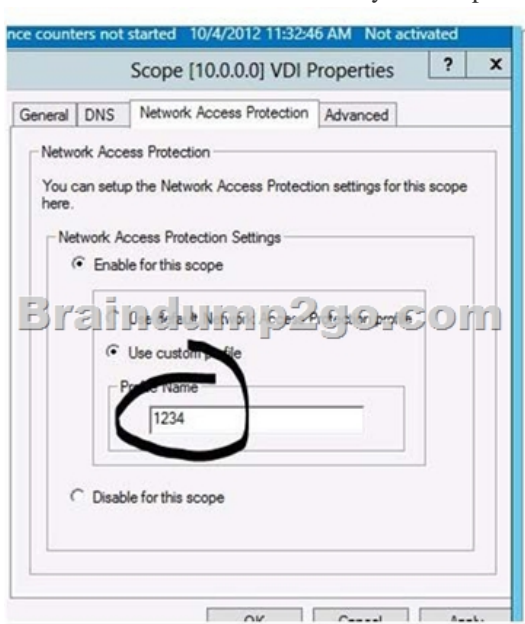
QUESTION 291 Your network contains an Active Directory domain named contoso.com. The domain contains a server named Server1 that runs Windows Server 2012 R2. You enable and configure Routing and Remote Access (RRAS) on Server1. You create a user account named User1. You need to ensure that User1 can establish VPN connections to Server1. What should you do? A. Modify the members of the Remote Management Users group. B. Add a RADIUS client. C. Modify the Dial-in setting of User1. D. Create a connection request policy. Answer: C Explanation: Access permission is also granted or denied based on the dial-in properties of each user account. <http://technet.microsoft.com/en-us/library/cc772123.aspx>

QUESTION 292 Your network contains an Active Directory domain named contoso.com. All user accounts reside in an organizational unit (OU) named OU1. All of the users in the marketing department are members of a group named Marketing. All of the users in the human resources department are members of a group named HR. You create a Group Policy object (GPO) named GPO1. You link GPO1 to OU1. You configure the Group Policy preferences of GPO1 to add two shortcuts named Link1 and Link2 to the desktop of each user. You need to ensure that Link1 only appears on the desktop of the users in Marketing and that Link2 only appears on the desktop of the users in HR. What should you configure? A. Security Filtering B. WMI Filtering C. Group Policy Inheritance D. Item-level targeting Answer: D Explanation: You can use item-level targeting to change the scope of individual preference items, so they apply only to selected users or computers. Within a single Group Policy object (GPO), you can include multiple preference items, each customized for selected users or computers and each targeted to apply settings only to the relevant users or computers. <http://technet.microsoft.com/en-us/library/cc733022.aspx>

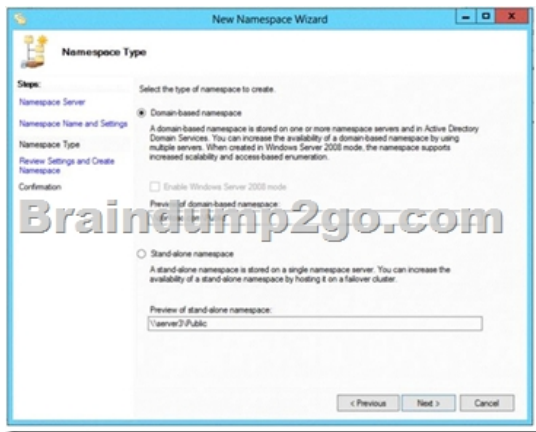
QUESTION 293 Your network contains a single Active Directory domain named contoso.com. All domain controllers run Windows Server 2012 R2. The domain contains 400 desktop computers that run Windows 8 and 10 desktop computers that run Windows XP Service Pack 3 (SP3). All new desktop computers that are added to the domain run Windows 8. All of the desktop computers are located in an organizational unit (OU) named OU1. You create a Group Policy object (GPO) named GPO1. GPO1 contains startup script settings. You link GPO1 to OU1. You need to ensure that GPO1 is applied only to computers that run Windows XP SP3. What should you do? A. Create and link a WML filter to GPO1. B. Run the Set-GPInheritance cmdlet and specify the -target parameter. C. Run the Set-GPLink cmdlet and specify the -target parameter. D. Modify the Security settings of OU1. Answer: A Explanation: WMI Filtering is used to get information of the system and apply the GPO on it with the condition is met. Security filtering: apply a GPO to a specific group (members of the group) QUESTION 294 Your network contains an Active Directory domain named contoso.com. Network Policy Server (NPS) is deployed to the domain. You plan to deploy Network Access Protection (NAP). You need to configure the requirements that are validated on the NPS client

computers. What should you do? A. From the Network Policy Server console, configure a network policy. B. From the Network Policy Server console, configure a health policy. C. From the Network Policy Server console, configure a Windows Security Health Validator (WSHV) policy. D. From a Group Policy object (GPO), configure the NAP Client Configuration security setting. E. From a Group Policy object (GPO), configure the Network Access Protection Administrative Templates setting. Answer: C

QUESTION 295 Your network contains an Active Directory domain named adatum.com. The domain contains a server named Server1 that runs Windows Server 2012 R2. Server1 is configured as a Network Policy Server (NPS) server and as a DHCP server. The network contains two subnets named Subnet1 and Subnet2. Server1 has a DHCP scope for each subnet. You need to ensure that noncompliant computers on Subnet1 receive different network policies than noncompliant computers on Subnet2. Which two settings should you configure? (Each correct answer presents part of the solution. Choose two.) A. The NAP-Capable Computers conditions B. The NAS Port Type constraints C. The Health Policies conditions D. The MS-Service Class conditions E. The Called Station ID constraints Answer: A, D Explanation: The MS-Service Class is how you can specify which subnet the computer must be coming from in order to Apply the policy.



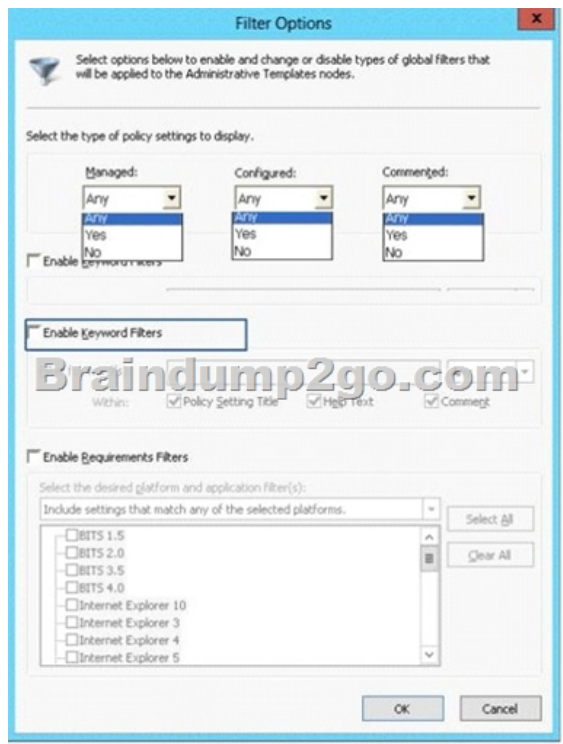
QUESTION 296 Your network contains an Active Directory domain named contoso.com. The functional level of the forest is Windows Server 2008 R2. Computer accounts for the marketing department are in an organizational unit (OU) named DepartmentsMarketingComputers. User accounts for the marketing department are in an OU named DepartmentsMarketingUsers. All of the marketing user accounts are members of a global security group named MarketingUsers. All of the marketing computer accounts are members of a global security group named MarketingComputers. In the domain, you have Group Policy objects (GPOs) as shown in the exhibit. (Click the Exhibit button.)



You create two Password Settings objects named PSO1 and PSO2. PSO1 is applied to MarketingUsers. PSO2 is applied to MarketingComputers. The minimum password length is defined for each policy as shown in the following table.

Location
Default Domain Policy
GPO1
GPO2
PSO1
PSO2

You need to identify the minimum password length required for each marketing user. What should you identify? A. 5B. 6C. 7D. 10E. 12 Answer: D QUESTION 297 Your network contains an Active Directory domain named adatum.com. You need to audit changes to the files in the SYSVOL shares on all of the domain controllers. The solution must minimize the amount of SYSVOL replication traffic caused by the audit. Which two settings should you configure? (Each correct answer presents part of the solution. Choose two.) A. Audit Policy Audit system events B. Advanced Audit Policy Configuration DS Access C. Advanced Audit Policy Configuration Global Object Access Auditing D. Audit Policy Audit object access E. Audit Policy Audit directory service access F. Advanced Audit Policy Configuration Object Access Answer: DF QUESTION 298 Your network contains multiple Active Directory sites. You have a Distributed File System (DFS) namespace that has a folder target in each site. You discover that some client computers connect to DFS targets in other sites. You need to ensure that the client computers only connect to a DFS target in their respective site. What should you modify? A. The properties of the Active Directory sites B. The properties of the Active Directory site links C. The delegation settings of the namespace D. The referral settings of the namespace Answer: D Explanation: http://www.windowsnetworking.com/articles_tutorials/Configuring-DFS-Namespaces.html QUESTION 299 Your network contains an Active Directory domain named contoso.com. The domain contains a domain controller named DC1 that runs Windows Server 2012. You have a Group Policy object (GPO) named GPO1 that contains several custom Administrative templates. You need to filter the GPO to display only settings that will be removed from the registry when the GPO falls out of scope. The solution must only display settings that are either enabled or disabled and that have a comment. How should you configure the filter? To answer, select the appropriate options below. Select three.



A. Set Managed to: Yes
 B. Set Managed to: No
 C. Set Managed to: Any
 D. Set Configured to: Yes
 E. Set Configured to: No
 F. Set Configured to: Any
 G. Set Commented to: Yes
 H. Set Commented to: No
 I. Set Commented to: Any
 Answer: AFG
 QUESTION 300
 Your network contains an Active Directory domain named adatum.com. The domain contains five servers. The servers are configured as shown in the following table.

Server name	Configuration
DC1	Domain controller and DNS server
DC2	Domain controller and DHCP server
Server1	Windows Deployment Services (WDS)
Server2	Certification authority (CA)
Server3	File server

All desktop computers in adatum.com run Windows 8 and are configured to use BitLocker Drive Encryption (BitLocker) on all local disk drives. You need to deploy the Network Unlock feature. The solution must minimize the number of features and server roles installed on the network. To which server should you deploy the feature?
 A. Server3
 B. Server1
 C. DC2
 D. Server2
 E. DC1
 Answer: B
 Explanation: The BitLocker-NetworkUnlock feature must be installed on a Windows Deployment Server (which does not have to be configured--the WDS Server service just needs to be running).
 Instant Download Braindump2go New Released Microsoft 70-411 Exam Dumps PDF & VCE! Enjoy 1 year Free Update! 100% Exam Pass Guaranteed Or Full Money Back!

Administering

Questions and Answers Q&As
 Updated: Sep 14, 2015
 \$420.00 **\$99.99**
[PDF DEMO](#)
[CHECK OUT](#)

FREE DOWNLOAD: NEW UPDATED 70-411 PDF Dumps & VCE Dumps from Braindump2go:
<http://www.braindump2go.com/70-411.html> (322 Q&As)