

## 2015 Latest Microsoft 70-662 Exam Questions Provided By Braindump2go For Free Download (311-320)

**MICROSOFT NEWS: 70-662 Exam Questions has been Updated Today! Get Latest 70-662 VCE and 70-662 PDF Instantly!**

**Welcome to Download the Newest Braindump2go 70-662 VCE&70-662 PDF Dumps:**

<http://www.braindump2go.com/70-662.html> (507 Q&As) Do you want to pass Microsoft 70-662 Exam ? If you answered YES, then look no further. Braindump2go offers you the best 70-662 exam questions which cover all core test topics and certification requirements. All REAL questions and answers from Microsoft Exam Center will help you be a 70-662 certified! Exam Code: 70-662 Exam Name TS: Microsoft Exchange Server 2010, Configuring Certification Provider: Microsoft Corresponding Certifications: MCITP, MCITP: Enterprise Messaging Administrator on Exchange 2010, MCTS, MCTS: Microsoft Exchange Server 2010, Configuring 70-662 Dumps, 70-662 PDF, 70-662 PDF eBook, 70-662 Braindump, 70-662 Study Guide, 70-662 Book, 70-662 Practice Test, 70-662 Dumps PDF, 70-662 VCE, 70-662 VCE Dumps, 70-662 Valid Dumps, 70-662 Exam Questions Free, 70-662 Dumps, 70-662 Free Dumps, 70-662 Questions and Answers Free, 70-662 Braindump PDF, 70-662 Braindump VCE, 70-662 Preparation

### TS: Microsoft Exchange Server 2010, Configuring: 70-662



Questions and Answers : 507 Q&As

Updated: Jan 02, 2016

€129.99 **\$99.99**

PDF DEMO

CHECK OUT

**Product Description Exam Number/Code: 70-662**

**Exam Number/Code: 70-662**

"TS: Microsoft Exchange Server 2010, Configuring", also known as 70-662 exam, is a Microsoft Certification. With the complete collection of questions and answers, Braindump2go has assembled to take you through 507 Q&As to your 70-662 Exam preparation. In the 70-662 exam resources, you will cover every field and category in Microsoft MCITP helping to ready you for your successful Microsoft Certification.

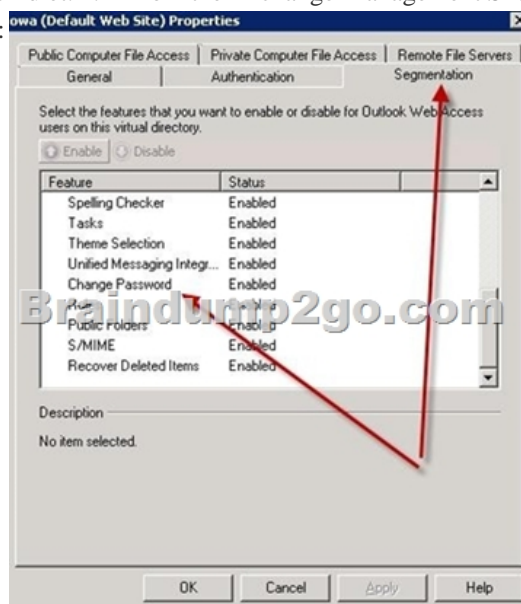
**Free Demo Download**

Braindump2go offers free demo for 70-662 exam (TS: Microsoft Exchange Server 2010, Configuring). You can check out the interface, question quality and usability of our practice exams before you decide to buy it.

Printable PDF  Premium VCE + VCE Simulator

QUESTION 311 Your network contains an Exchange Server 2010 Service Pack 1 (SP1) organization. The organization has a single public folder database. You need to prevent all the members of a group named Sales from accessing the public folders from Outlook Web App. What should you do first? A. From the Exchange Management Console (EMC), modify the Segmentation settings of the OWA virtual directory. B. From the Exchange Management Console (EMC), create a new Outlook Web App mailbox policy. C.

From the Exchange Management Shell, run the Set-CasMailbox cmdlet. D. From the Exchange Management Shell, run the Add-PublicFolderClientPermission cmdlet. Answer: A Explanation:

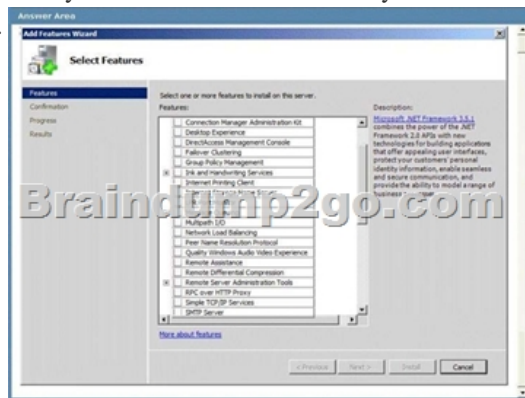


QUESTION 312 Your network contains an Exchange Server 2010 Service Pack 1 (SP1) organization named fabhkam.com. You have two users named User1 and User2. User2 is the assistant of User1. You need to ensure that User2 can open the mailbox of User1. The solution must minimize the number of permissions assigned to User2. Which Windows PowerShell cmdlet should you use? A. Set-Mailbox B. New-ManagementRoleAssignment C. New-ManagementRole D. Add-MailboxPermission Answer: D

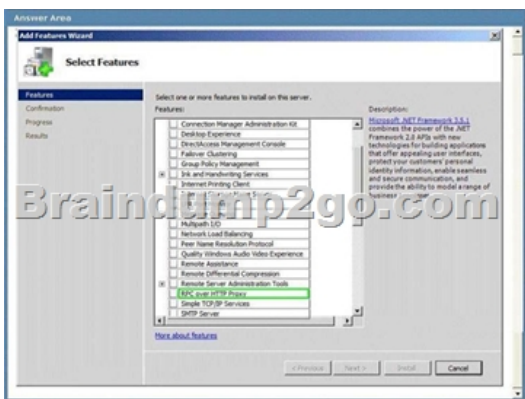
QUESTION 313 Your network contains an Exchange Server 2010 Service Pack 1 (SP1) organization. The organization has an Edge Transport server deployed in the perimeter network. The Edge Transport server is subscribed to your Active Directory site. You configure the Edge Transport server to copy email messages sent to the organization from the Internet to a mailbox named Mailbox1. You notice that email messages sent to non-existent users are not copied to Mailbox1. You need to ensure that all of the email messages sent to the organization from the Internet are copied to Mailbox1. Which feature should you disable? A. Recipient Filtering B. Content Filtering C. Sender ID D. Sender Filtering Answer: A

QUESTION 314 Your network contains an Active Directory domain. The domain contains one site. You have an Exchange Server 2010 Service Pack 1 (SP1) organization that contains two Client Access servers, two Hub Transport servers, and three Mailbox servers. The mailbox servers are members of a database availability group (DAG) named DAG1. On a client computer, you load a test profile for a user named Test\_User. You log on to the test profile by using Microsoft Outlook 2010. You discover that the client computer cannot receive the Autodiscover information. You verify that other users experience the same issue. You need to identify the Autodiscover configuration error. What should you run from the Exchange Management Shell? A. Test-SenderId B. Test-SystemHealth C. Test-AvailabilityService D. Test-WebServicesConnectivity E. Test-SMTPConnectivity F. Test-ReplicationHealth G. Test-MailFlow H. Get-MailboxDatabaseCopyStatus I. Test-OutlookWebServices J. checkdatabaseredundancy.ps1 K. Get-MailboxDatabase L. Retry-Queue M. Get-SenderIDConfig N. Test-MapiConnectivity Answer: I

QUESTION 315 Hotspot Question Your network contains an Active Directory forest named contoso.com. The forest contains an Active Directory site named Site1. You have an Exchange Server 2010 Service Pack 1 (SP1) organization. You have a Client Access Server named Server1. You need to enable Outlook Anywhere on Server1. Which feature should you install on Server1 before you enable Outlook Anywhere? To answer, select the appropriate feature in the answer area.



Answer:

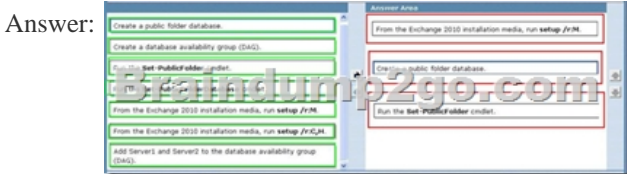


Explanation: Select "RPC over HTTP Proxy".

QUESTION 316 Your network contains an Active Directory domain. The domain contains one site. You have an Exchange Server 2010 Service Pack 1 (SP1) organization that contains two Client Access servers, two Hub Transport servers, and three Mailbox servers. The mailbox servers are members of a database availability group (DAG) named DAG1. Users report that they fail to receive email messages from the Internet. You review the message tracking logs and

discover that the organization failed to receive any email messages from the Internet during the past hour. You need to identify what is preventing the Hub Transport servers from receiving email messages. What should you run from the Exchange Management Shell? A. Get-MailboxDatabaseCopyStatusB. Test-AvailabilityServiceC. checkdatabaseredundancy.psID. Test-MapiConnectivityE. Get-MailboxDatabaseF. Test-SMTPConnectivityG. Retry-QueueH. Test-ReplicationHealthI. Test-WebServicesConnectivityJ. Test-SenderIDK. Get-SenderIDConfigL. Test-MailFlowM. Test-OutlookWebServicesN. Test-SystemHealth Answer: FExplanation:<http://technet.microsoft.com/en-us/library/ff849710.aspx> QUESTION 317Your network contains an Active Directory domain. The domain contains one site. You have an Exchange Server 2010 Service Pack 1 (SP1) organization that contains two Client Access servers, two Hub Transport servers, and three Mailbox servers. The mailbox servers are members of a database availability group (DAG) named DAG1. You have a mailbox database named DB1. You configure two mailbox database copies of DB1. You verify that both mailbox database copies have a status of Healthy. You need to ensure that an administrator is notified when the health status of a mailbox database copy changes. What should you run from the Exchange Management Shell? A. Test-ReplicationHealthB. Get-MailboxDatabaseC. Test-MapiConnectivityD. Test-MailFlowE. Test-SenderIdF. Test-SystemHealthG. Test-OutlookWebServicesH. Test-AvailabilityServiceI. Get-SenderIdConfigJ. Test-WebServicesConnectivityK. Test-SmtpConnectivityL. Retry-QueueM. Get-MailboxDataboxCopyStatusN. checkdatabaseredundancy.ps1 Answer: NExplanation:<http://technet.microsoft.com/en-us/library/dd351258.aspx>

<http://gallery.technet.microsoft.com/scriptcenter/8833b4db-8016-47e5-b747-951d28faafe7>[PS] CheckDatabaseRedundancy.ps1 -MailboxDatabaseName "Mailbox Database 1928496050" DatabaseName : Mailbox Database 1928496050LastRedundancyCount : 0CurrentRedundancyCount : 2LastState : UnknownCurrentState : GreenLastStateTransitionUtc : 5/11/2010 7:51:19 PM LastGreenTransitionUtc : 5/11/2010 7:51:19 PMLastRedTransitionUtc :LastGreenReportedUtc : 5/11/2010 7:51:19 PM LastRedReportedUtc :PreviousTotalRedDuration : 00:00:00TotalRedDuration: 00:00:00IsTransitioningState: True HasErrorsInHistory: FalseCurrentErrorMessages:ErrorHistory: QUESTION 318Drag and Drop QuestionYour network contains an Active Directory domain named contoso.com. You have an Exchange Server 2010 Service Pack 1 (SP1) organization that contains two servers named Server1 and Server2. Server1 has a public folder database that contains a public folder named Sales. Server2 has the Client Access server role and the Hub Transport server role installed. You need to ensure that the Sales folder is available if Server1 fails. What should you do on Server2? To answer, move the appropriate actions from the list of actions to the answer area and arrange them in the correct order.



QUESTION 319Your company has three departments named Sales, Marketing, and Finance. The network contains an Active Directory domain named contoso.com. You have an Exchange Server 2010 Service Pack 1 (SP1) organization that contains the servers configured as shown in the following table. You create an Edge Subscription for Server2. You need to ensure that all of the email messages created by the members of the Sales department are approved by the Sales department manager before they are delivered. What should you create?

Server name	Server role
Server1	Mailbox Hub Transport Client Access
Server2	Edge Transport

A. an Edge Transport ruleB. a remote domainC. an accepted domainD. an attachment filter entryE. a new Send connectorF. a new journal ruleG. a new Edge SubscriptionH. an IP Block List ProviderI. a new organization relationshipJ. a new federation trustK. a Hub Transport ruleL. a new Receive connector Answer: K QUESTION 320Your company has three departments named Sales, Marketing, and Finance. The network contains an Active Directory domain named contoso.com. You

have an Exchange Server 2010 Service Pack 1 (SP1) organization that contains the servers configured as shown in the following table. You create an Edge Subscription for Server2. You need to prevent the company's server from accepting email messages from servers on the Internet that are known to originate spam. What should you add to the organization? A. an accepted domain B. a new federation trust C. an IP Block List Provider D. an Edge Transport rule E. a new Send connector F. an attachment filter entry G. a new Edge Subscription H. a remote domain I. a new journal rule J. a new Receive connector K. a Hub Transport rule L. a new organization relationship  
Answer: C  
Explanation: Reference: <http://technet.microsoft.com/en-us/library/aa997658.aspx>  
<http://exchangeserverpro.com/exchange-2010-edge-transport-server-configuring-ip-block-listproviders>  
Braindump2go New Released 70-662 Dump PDF Free Download, 507 Questions in all, Passing Your Exam 100% Easily!

### TS: Microsoft Exchange Server



Questions and Answers : 507  
Q&As

Updated: Jan 02, 2016

~~\$129.99~~ **\$99.99**

[PDF DEMO](#)

[CHECK OUT](#)

#### Product Description

#### Exam Number/Code

TS: Microsoft Exchange Server Certification. With the course assembled to take you through the resources, you will cover your successful Microsoft

#### Free Demo Download

Braindump2go offers free (Configuring). You can check exams before you decide

[Printable PDF](#)

FREE DOWNLOAD: NEW UPDATED 70-662 PDF Dumps & 70-662 VCE Dumps from Braindump2go:  
<http://www.braindump2go.com/70-662.html> 507 Q&As)