

## 2015 Latest Braindump2go 70-336 Exam Questions PDF Free Download (101-110)

**MICROSOFT NEWS: 70-336 Exam Questions has been Updated Today! Get Latest 70-336 VCE and 70-336 PDF Instantly!**

**Welcome to Download the Newest Braindump2go 70-336 VCE&70-336 PDF Dumps:**

<http://www.braindump2go.com/70-336.html> (110 Q&As) Try 2015 Latest Updated 70-336 Practice Exam Questions and Answers, Pass 70-336 Actual Test 100% in 2015 New Year! Braindump2go Latest released Free Sample 70-336 Exam Questions are shared for instant download! Braindump2go holds the confidence of 70-336 exam candidates with Microsoft Official Guaranteed 70-336 Exam Dumps Products! 110 New Updated Questions and Answers! 2015 Microsoft 70-336 100% Success! Exam Code: 70-336Exam Name: Core Solutions of Microsoft Lync Server 2013 Certification Provider: Microsoft Corresponding Certifications: MCSE, MCSE: Communication [70-336 Dump](#), [70-336 PDF](#), [70-336 VCE](#), [70-336 Study Guide](#), [70-336 Book](#), [70-336 Exam Questions](#), [70-336 eBook](#), [70-336 Exam Guide](#), [70-336 Exam Prep](#), [70-336 Braindump](#), [70-336 Practice Test](#), [70-336 Practice Exam](#)

Microsoft Core Solutions of M



**Product Description**

**Exam Number/Code**

Microsoft Core Solutions of M  
Microsoft Certification  
has assembled to take  
exam resources, you  
for your successful M

**Questions and Answers : 110 Q&As**

Updated: Dec 12, 2015

~~\$429.99~~ **\$99.99**

[PDF DEMO](#)

[CHECK OUT](#)

**Printable PDF**

**QUESTION 101** Hotspot Questions You have a Lync Server 2013 infrastructure. You plan to deploy Persistent Chat features to meet the following requirements:- Support up to 50,000 concurrent users.- Enable the Persistent Chat Server Compliance service. - Ensure that all of the features are automatically available if a single server fails. You need to identify the minimum number of Front End Servers and Microsoft SQL Server Back End Servers that are required for the planned deployment. How many servers should you identify? (To answer, select the appropriate number of servers for each component in the answer area.) **Persistent Chat Front End Servers**

**Braindump2go.com**  
SQL Server Back End Servers

Answer: Persistent Chat Front End Servers

4  
5  
6  
7  
8

SQL Server Back End Servers

1  
2  
3  
4

**QUESTION 102**You have a Lync Server 2013 infrastructure. The infrastructure contains two servers. The servers are configured as shown in the following table.

Server name	Pool name	Role
Lyncfe02	Lyncfe02.contoso.com	Standard Front End Server

Pool pairing is configured between lyncfe01 and lyncfe02. Currently, the Central Management store is hosted on lyncfe01. A hardware failure occurs on lyncfe01. You manually perform a failover of all the user services and the Central Management store to lyncfe02. You resolve the hardware issue on lyncfe01. You need to restore all of the user services and the Central Management store to lyncfe01. Which three commands should you run? (Each correct answer presents part of the solution. Choose three.)  
A. Invoke-CsPoolFailback -PoolFQDN lyncfe02.contoso.com  
B. Invoke-CsManagementServerFailover -BackupSqlServerFQDN lyncfe01.contoso.com  
C. BackupSqlServerInstanceName RTC -Force  
D. Install CSDatabase -CentralManagementDatabase -SqlServerFqdn lyncfe01.contoso.com -SQLInstanceName RTC -Clean  
E. Invoke-CsPoolFailback -PoolFQDN lyncfe01.contoso.com

Answer: CDE  
Explanation: The pool named lyncfe01.contoso.com is the pool that failed over to lyncfe02 when lyncfe01 failed. Therefore, we need to fail back pool lyncfe01.contoso.com to the recovered server.  
\* Install CSDatabase  
\* Install CSDatabase.  
\* Lync Server makes extensive use of SQL Server databases, ranging from the Central Management store to the Archiving database. As a general rule, these databases are set up at the same time you install Lync Server or at the same time you install a Lync Server role (such as Monitoring Server) that requires a database back end. After installation has taken place these databases typically will not need to be reinstalled or moved to new locations. On rare occasions, however, you might need to manually install a Lync Server database; this could be because you need to move a database to another server, or because a setup-related problem failed to install the database for you. The Install-CsDatabase cmdlet provides a way for you to install any of the SQL Server databases used by Lync Server.  
\* Invoke-CsPoolFailback  
\* Invokes the failback process for a Lync Server 2013 pool.

Failback is used after a pool has failed over and the users of that pool have been "failed over" to a backup pool. (That simply means users who were signed on to the failed pool are automatically signed on to the backup pool.) When the failed pool has been restored, the fail back process signs the failed-over users back to their original pool.  
\* Move-CsManagementServer  
\* Moves the Central Management Server from one pool to another. Reference: To use Windows PowerShell cmdlets to configure the SQL Server Central Management store

**QUESTION 103**You have a Lync Server 2013 infrastructure. You deploy mobility features. You need to ensure that mobile clients can establish IP video calls only when they connect to a wireless access point (WAP). Which cmdlet should you run?  
A. Set-CsConferencingPolicy  
B. Set-CsLocationPolicy  
C. Set-CsNetworkBandwidthPolicyProfile  
D. Set-CsMobilityPolicy  
E. Set-CsClientPolicy

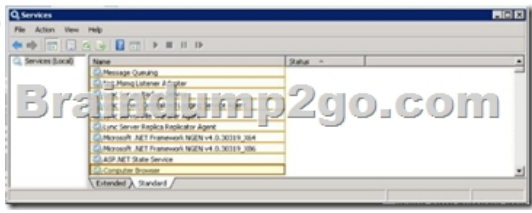
Answer: D  
Explanation: Mobility policies can also be used to require Wi-Fi connections when making or receiving calls.  
<http://technet.microsoft.com/en-us/library/hh690021.aspx>  
**QUESTION 104**You have a Lync Server 2010 and Lync Server 2013 infrastructure. The infrastructure contains Front End pools. Currently, all users use the Lync Server 2010 Front End pool. An administrator migrates a user to the Lync Server 2013 Front End pool. After the migration, the user can no longer access the whiteboards, the attachments, the poll data, and the Microsoft PowerPoint presentations that were uploaded to the meeting before the migration. You need to ensure that the PowerPoint presentations, the whiteboards, the attachments, and the poll data are moved when users migrate from Lync Server 2010 to Lync Server 2013. What should you do?  
A. Run the Move-CsUser cmdlet and specify the -ProxyPool parameter.  
B. Run the Move-CsLegacyUser cmdlet before you migrate the users.  
C. Run the Move-CsConferenceDirectory cmdlet before you migrate the users.  
D. Run the Move-CsUser cmdlet and specify the -MoveConferenceData parameter.

Answer: D  
QUESTION 105 You have a Lync Server 2013 infrastructure. The infrastructure contains four Standard Edition Front End Servers and an Edge Server. You run

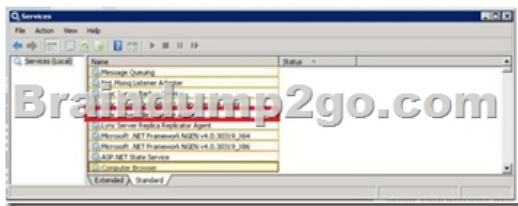
Get-CsManagementStoreReplicationStatus | ft ReplicaFQDN, Up To Date and you receive the following output:

```
ReplicaFqdn
-----
edge01.contoso.com
1f8c5c0b-1c00-4b3d-b010-000000000000
lyncfe02.contoso.com
lyncfe03.contoso.com
lyncfe04.contoso.com
```

On the server responsible for the replication of the Central Management store, you discover that several services have stopped. You need to enable the replication of the Central Management store. Which service should you start? (To answer, select the appropriate service in the answer area.)



Answer:



QUESTION 106 Your company has a Microsoft Office 365 subscription. The company uses Microsoft Lync Online. You need to ensure that Lync Online users can use dial-in conferencing. The solution must minimize costs. What should you do? A. Deploy an Edge Server and add a hosting provider to the server. B. Deploy an Edge Server and configure the A/V Edge service on the server. C. Deploy an A/V Conferencing pool. D. Set up an account with a third-party audio conferencing provider. Answer: D

QUESTION 107 You plan to deploy a Lync Server 2013 infrastructure. The planned infrastructure will contain client computers that run Windows 8 and the Lync store app. You need to ensure that the computers can use the automatic client sign-in feature for the Lync Windows store app. Which DNS records should you create? A. lyncdiscover.contoso.com and lyncdiscoverinternal.contoso.com B. sip.contoso.com and sipinternal.contoso.com C. sipinternal.contoso.com and sipexternal.contoso.com D. \_sipinternaltls.\_tcp.contoso.com and \_sip.tls.contoso.com Answer: A Explanation:

<http://blog.schertz.name/2012/12/lync-2013-client-autodiscover/> QUESTION 108 You have a Lync Server 2013 infrastructure. The infrastructure contains two sites. The sites are located in New York and Rome. Each site has Enterprise Voice deployed and separate dial plans and voice policies. You plan to deploy dial-in conferencing to both sites. In each site, you create a dedicated conferencing policy. You assign the conferencing policies to the respective users in each site. You create a dial-in conferencing access number. You discover that the regions are unavailable. You need to ensure that you can add a region to the dial-in conferencing access number. What should you modify? A. The dial plans B. Conferencing policies C. The voice policies D. The meeting configuration settings Answer: A Explanation: <http://technet.microsoft.com/en-us/library/gg398126.aspx> QUESTION 109 You have two servers named Lync1 and Lync2 that have Lync Server 2013 Standard Edition deployed. The servers are located in different buildings. Lync1 hosts response groups. You need to ensure that Lync2 can host the response groups if Lync1 fails. Which cmdlet should you run first? A. Export-CsConfiguration B. Export-CsRgsConfiguration C. Backup-CsPool D. Move-CsRgsConfiguration Answer: B

QUESTION 110 You plan to deploy a Lync Server 2013 Edge Server. You need to identify which operating systems can be used to deploy the Edge Server. Which operating systems should you identify? (Each correct answer presents a complete solution. Choose all that apply.) A. A full installation of Windows Server 2008 Service Pack 2 (SP2) Enterprise B. A full installation of Windows Server 2008 R2 Service Pack 1 (SP1) Standard C. A Server Core installation of Windows Server 2012 Enterprise D. A Server Core installation of Windows Server 2008 R2 Service Pack 1 (SP1) Standard E. A full installation of Windows Server 2012 Enterprise F. A full installation of Windows Server 2012 Datacenter Answer: BF

Braindump2go Offers 100% money back guarantee on all products! Our products remain valid for a lifetime! Recently we update our 70-336 Exam Questions since the Microsoft Official Exam Center adds some new questions in 70-336 Exam Dumps. Braindump2go checks all Exam Dumps every day and guarantee all the exam questions are the latest and correct!

#### Microsoft Core Solutions

A product advertisement for 'Microsoft Core Solutions' exam dumps. It features a red and white product box with a 'PDF VCE' label. The text includes 'Questions and Answers : 110 Q&amp;As', 'Updated: Dec 12, 2015', and a price reduction from '\$120.00' to '\$99.99'. There are buttons for 'PDF DEMO', 'CHECK OUT', and 'Printable'. The right side of the ad has a 'Product' section with 'Exam Nu...' and a quote: 'Microsoft C... Microsoft C... has assem... exam resou... for your su...'. Below that, it says 'Free De...' and 'Braindump... Server 201... exams befo...'. A 'Printable' checkbox is also visible.

**FREE DOWNLOAD: NEW UPDATED 70-336 PDF Dumps & 70-336 VCE Dumps from Braindump2go:**

<http://www.braindump2go.com/70-336.html> (110 Q&As)