

## 2015 Braindump2go Microsoft 70-460 VCE Dumps Free Download (31-40)

Braindump2go New Released Microsoft 70-460 Practice Tests Sample Questions Free Download! 100% Same Questions with Actual 70-460 Exam! Guaranteed 100% Pass! Vendor: Microsoft Exam Code: 70-460 Exam Name: Transition Your MCITP: Business Intelligence Developer 2008 to MCSE: Business Intelligence Exam Keywords: 70-460 Exam Dumps, 70-460 Practice Tests, 70-460 Practice Exams, 70-460 Exam Questions, 70-460 PDF, 70-460 VCE Free, 70-460 Book, 70-460 E-Book, 70-460 Study Guide, 70-460 Braindump, 70-460 Prep Guide

Compared Before Buying Microsoft 70-460 PDF & VCE!		
Pass4sure	Braindump2go 100% Pass OR Money Back	TestKing
84 Q&As – Practice	94 Q&As – Real Questions	84 Q&As – Practice
\$124.99	\$99.99	\$169.98
No Discount	Coupon Code: BDNT2014	No Discount

**QUESTION 31** You are designing a SQL Server Analysis Services (SSAS) cube. You need to create a measure to count unique customers. What should you do? A. Use role playing dimensions. B. Use the Business Intelligence Wizard to define dimension intelligence. C. Add a measure that uses the Count aggregate function to an existing measure group. D. Add a measure that uses the DistinctCount aggregate function to an existing measure group. E. Add a measure that uses the LastNonEmpty aggregate function. Use a regular relationship between the time dimension and the measure group. F. Add a measure group that has one measure that uses the DistinctCount aggregate function. G. Add a calculated measure based on an expression that counts members filtered by the Exists and NonEmpty functions. H. Add a hidden measure that uses the Sum aggregate function. Add a calculated measure aggregating the measure along the time dimension. I. Create several dimensions. Add each dimension to the cube. J. Create a dimension. Then add a cube dimension and link it several times to the measure group. K. Create a dimension. Create regular relationships between the cube dimension and the measure group. Configure the relationships to use different dimension attributes. L. Create a dimension with one attribute hierarchy. Set the IsAggregatable property to False and then set the DefaultMember property. Use a regular relationship between the dimension and measure group. M. Create a dimension with one attribute hierarchy. Set the IsAggregatable property to False and then set the DefaultMember property. Use a many-to-many relationship to link the dimension to the measure group. N. Create a dimension with one attribute hierarchy. Set the ValueColumn property, set the IsAggregatable property to False, and then set the DefaultMember property. Configure the cube dimension so that it does not have a relationship with the measure group. Add a calculated measure that uses the MemberValue attribute property. O. Create a new named calculation in the data source view to calculate a rolling sum. Add a measure that uses the Max aggregate function based on the named calculation. Answer: F

**QUESTION 32** You administer a SQL Server Reporting Services (SSRS) instance in native mode. You need to assign a predefined role that meets the following requirements: - Members of the role must be able to update shared data sources. - Members of the role must not be able to consume reports or manage subscriptions. - The role must provide only the minimum permissions required. Which role should you assign? (More than one answer choice may achieve the goal. Select the BEST answer.) A. the Content Manager role B. the Read and Process role C. the Publisher role D. the Browser role Answer: C

**QUESTION 33** Drag and Drop Questions You are designing a SQL Server Reporting Services (SSRS) solution. An existing report aggregates data from a SQL Azure database in a chart. You need to use the chart in a new report and ensure that other users can use the chart in their reports. Which three actions should you perform in sequence? (To answer, move the appropriate actions from the list of actions to the answer area and arrange them in the correct order.)



Answer:



QUESTION 34 You are designing a subscription strategy for a SQL Server Reporting Services (SSRS) report. You have an application that populates a table with user-specific subscription schedules and report formats. You need to ensure that users can receive reports by email according to their preferences. What should you do? (More than one answer choice may achieve the goal. Select the BEST answer.)

A. Create a standard subscription for each record in the table.  
B. Create a data-driven subscription for each record in the schedule table.  
C. Create one data-driven subscription. Schedule the subscription to frequently retrieve user preferences.  
D. Create a standard subscription for each subscription schedule.

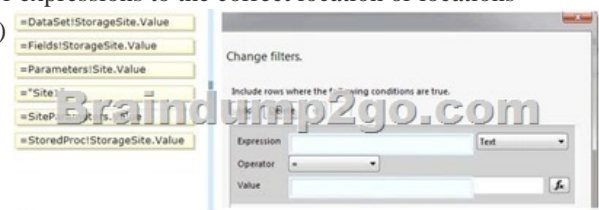
QUESTION 35 You are designing a strategy for an enterprise reporting solution that uses SQL Server Reporting Services (SSRS). Many of the SSRS reports will use common utilities and functions, including the following:- Report utility functions and business logic in code - Standardized report formatting properties such as fonts and colors for report branding Formatting may change and new functions may be added as the reporting solution evolves. You need to create a strategy for deploying the formatting and code across the entire enterprise reporting solution. You must also ensure that reports can be easily updated to reflect formatting and function changes. What should you do? (More than one answer choice may achieve the goal. Select the BEST answer.)

A. Create a report as a template. Apply standardized formatting to the template. Store code in the Code section of the template.  
B. Build a web service that retrieves formatting properties and runs code. Call the web service through a report dataset.  
C. Store the formatting properties and code in database objects. Use stored procedures to populate a default value for report parameters and map each parameter to a corresponding formatting property.  
D. Create an assembly that contains formatting properties and code. Deploy the assembly on the Reporting Server and reference the assembly from each report.

QUESTION 36 Drag and Drop Questions You are designing a dataset for a SQL Server Reporting Services (SSRS) report. The report includes the report items displayed in the following graphic.



The dataset is sourced from a commonly used stored procedure in an inventory data mart hosted in a SQL Azure database. It returns the status for all products across all storage sites. The report must display data for the storage site that is selected by the Site report parameter. You cannot change the stored procedure code. You need to filter the dataset to use only data specific to the selected site. How should you configure the filter? To answer, drag the appropriate expression or expressions to the correct location or locations in the answer area. (Answer choices may be used once, more than once, or not all.)



Explanation: Note: To set a filter on the dataset Open a report in Design view. Right-click a dataset in the Report Data pane and then click Dataset Properties. The Dataset Properties dialog box opens. Click Filters. This displays the current list of filter equations. By default, the list is empty. Click Add. A new blank filter equation appears. In Expression, type or select the expression for the field to

filter. To edit the expression, click the expression (fx) button.Box 1: Here we use the Fields expression.From the drop-down box, select the data type that matches the type of data in the expression you created in step 5.In the Operator box, select the operator that you want the filter to use to compare the values in the Expression box and the Value box. The operator you choose determines the number of values that are used from the next step.Box 2: we test for equality.In the Value box, type the expression or value against which you want the filter to evaluate the value in Expression.Box 3: we compare to the value of the Parameter named Site.Click OK. Reference: How to: Add a Filter (Reporting Services) QUESTION 37You are creating a Multidimensional Expressions (MDX) calculation for Projected Revenue in a cube. For Customer A, Projected Revenue is defined as 150 percent of the Total Sales for the customer. For all other customers, Projected Revenue is defined as 110 percent of the Total Sales for the customer. You need to calculate the Projected Revenue as efficiently as possible. Which calculation should you use? (More than one answer choice may achieve the goal. Select the BEST answer.)

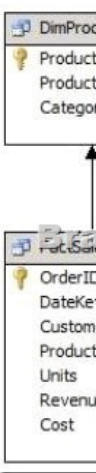
```
A. CREATE MEMBER CurrentCube.[Measures].[Projected Revenue]
AS [Measures].[Total Sales]:
SCOPE {[Customer].[Customer Name].MEMBERS, [Measures].[Projected Revenue]};
[Measures].[Total Sales] * 1.1;
IF [Customer].[Customer Name].CurrentMember.Name = "Customer A"
THEN [Measures].[Total Sales] * 1.5
END IF;
END SCOPE;

B. CREATE MEMBER CurrentCube.[Measures].[Projected Revenue]
AS CASE WHEN [Customer].[Customer Name].CurrentMember.Name = "Customer A"
THEN [Measures].[Total Sales] * 1.5
ELSE [Measures].[Total Sales] * 1.1
END
END SCOPE;

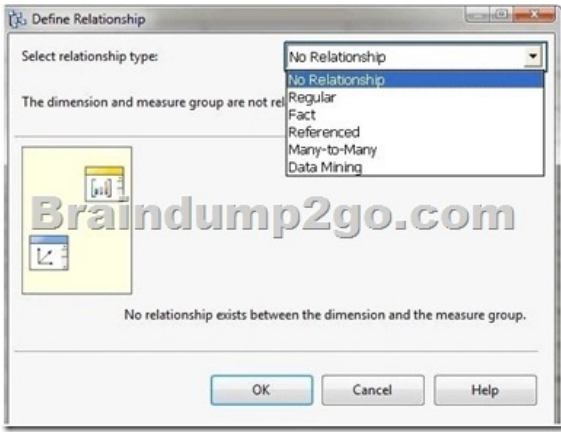
C. CREATE MEMBER CurrentCube.[Measures].[Projected Revenue]
AS [Measures].[Total Sales] * 1.1;
SCOPE {[Customer].[Customer Name].&{Customer A}, [Measures].[Projected Revenue]};
THIS = [Measures].[Total Sales] * 1.5;
END SCOPE;

D. CREATE MEMBER CurrentCube.[Measures].[Projected Revenue]
AS [Measures].[Total Sales] * 1.1;
SCOPE {[Customer].[Customer Name].MEMBERS, [Measures].[Projected Revenue]};
[Customer].[Customer Name].&{Customer A} = [Measures].[Total Sales] * 1.5;
END SCOPE;
```

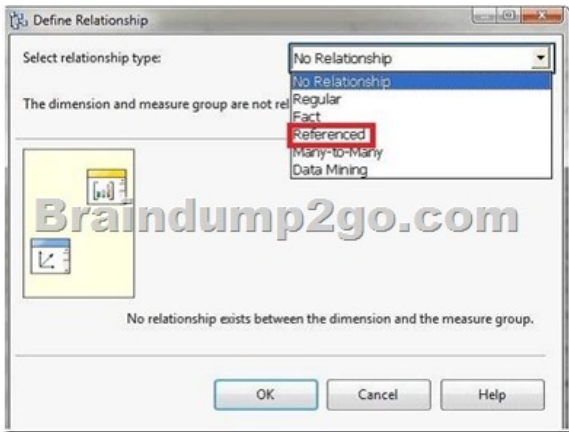
A. Option AB. Option BC. Option CD. Option D Answer: C QUESTION 38You are modifying a star schema data mart that feeds order data from a Microsoft Azure SQL Database database into a SQL Server Analysis Services (SSAS) cube. The data mart contains two large tables that include flags and indicators for some orders. There are 100 different flag columns, each with 10 different indicator values. Some flags reuse indicators. The tables both have a granularity that matches the fact table. You have the following requirements:- Allow users to slice data by all flags and indicators. - Modify the date dimension table to include a surrogate key of a numeric data type and add the surrogate key to the fact table.- Use the most efficient design strategy for cube processing and queries.You need to modify the schema.What should you do? (More than one answer choice may achieve the goal. Select the BEST answer.) A. Define the surrogate key as an INT data type. Combine the distinct flag/indicator combinations into a single dimension.B. Define the surrogate key as an INT data type. Create a single fact dimension in each table for its flags and indicators.C. Define the surrogate key as a BIGINT data type. Combine the distinct flag/indicator combinations into a single dimension.D. Define the surrogate key as a BIGINT data type. Create a single fact dimension in each table for its flags and indicators. Answer: A QUESTION 39Hotspot QuestionsYou are developing a SQL Server Analysis Services (SSAS) cube. A dimension named Category is based on the DimCategory table. A subset of the data source view is shown in the following graphic.



You need to relate the Category dimension to the Sales measure group. Which relationship type should you choose? To answer, select the appropriate option from the drop-down list in the dialog box.



Answer:



Explanation: Referenced Relationship Link a dimension to a fact table indirectly through a dimension that is linked directly through a primary key-foreign key relationship. QUESTION 40 You are designing a SQL Server 2012 Integration Services (SSIS) deployment strategy. The production environment includes SSIS 2012 and SSIS 2008. The environment includes existing command shell scripts that invoke the dtutil command-line utility. You need to design a deployment strategy that supports existing deployment strategies and requires the minimum amount of effort. What should you do? (More than one answer choice may achieve the goal. Select the BEST answer.) A. Use a package deployment model. Change the command shell scripts to reference the SQL Server 2012 path to dtutil. B. Use a project deployment model. Use the Integration Services Deployment Wizard. C. Use a project deployment model. Use an indirect configuration. Change the command shell scripts to reference the SQL Server 2012 path to dtutil. D. Use a package deployment model. Use an indirect configuration. Use the Integration Services Deployment Wizard. Answer: A Latest 70-460 Questions and Answers from Microsoft Exam Center Offered by Braindump2go for Free Share Now! Read and remember all Real Questions Answers, Guaranteed Pass 70-460 Real Test 100% Or Full Money Back!

Compared Before Buying Microsoft 70-460 PDF		
Pass4sure	Braindump2go	
	100% Pass OR Money Back	
84 Q&As - Practice	94 Q&As - Real Questions	84 Q
\$124.99	\$99.99	\$169
No Discount	Coupon Code: BDN2014	No D

<http://www.braindump2go.com/70-460.html>